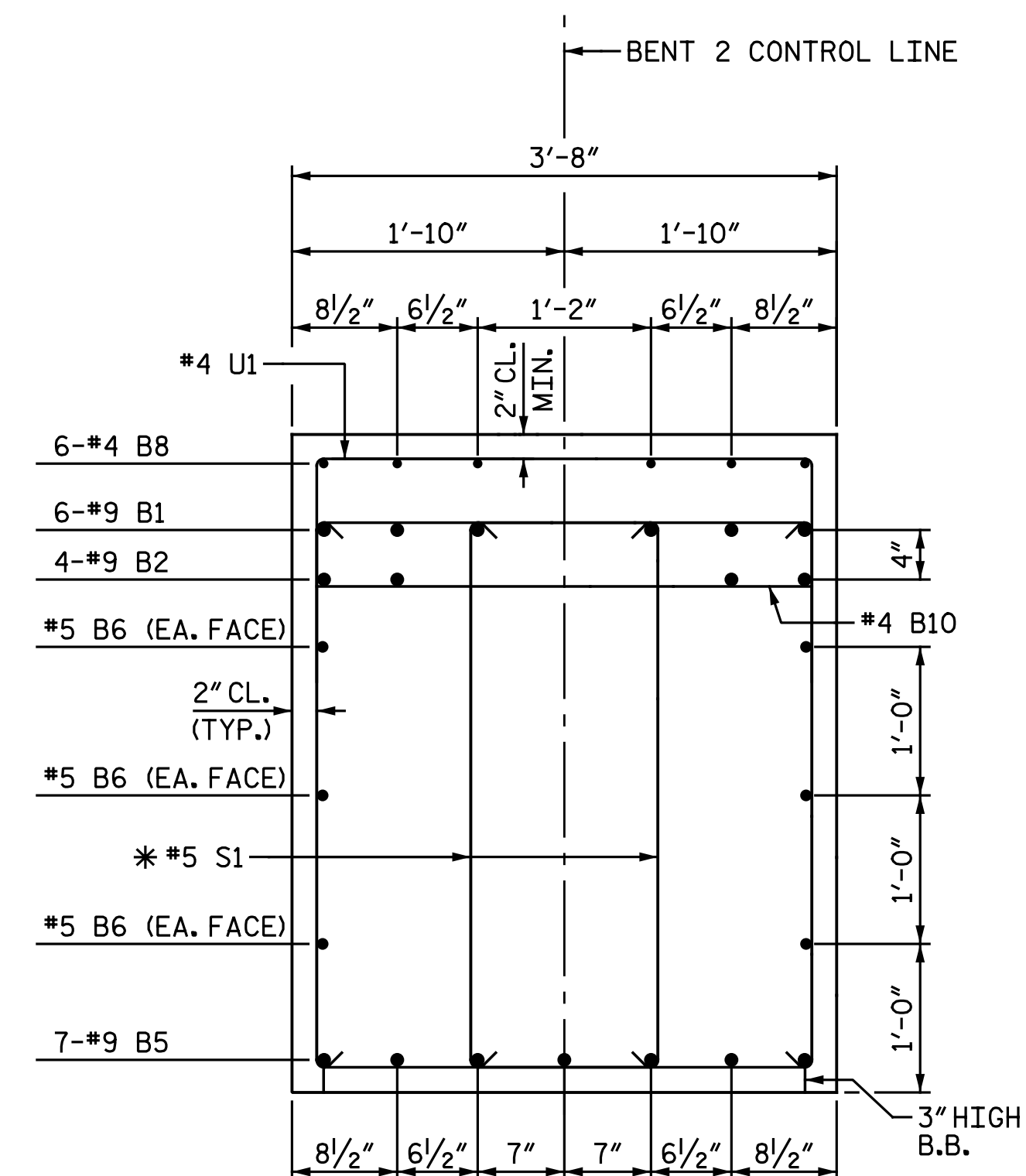
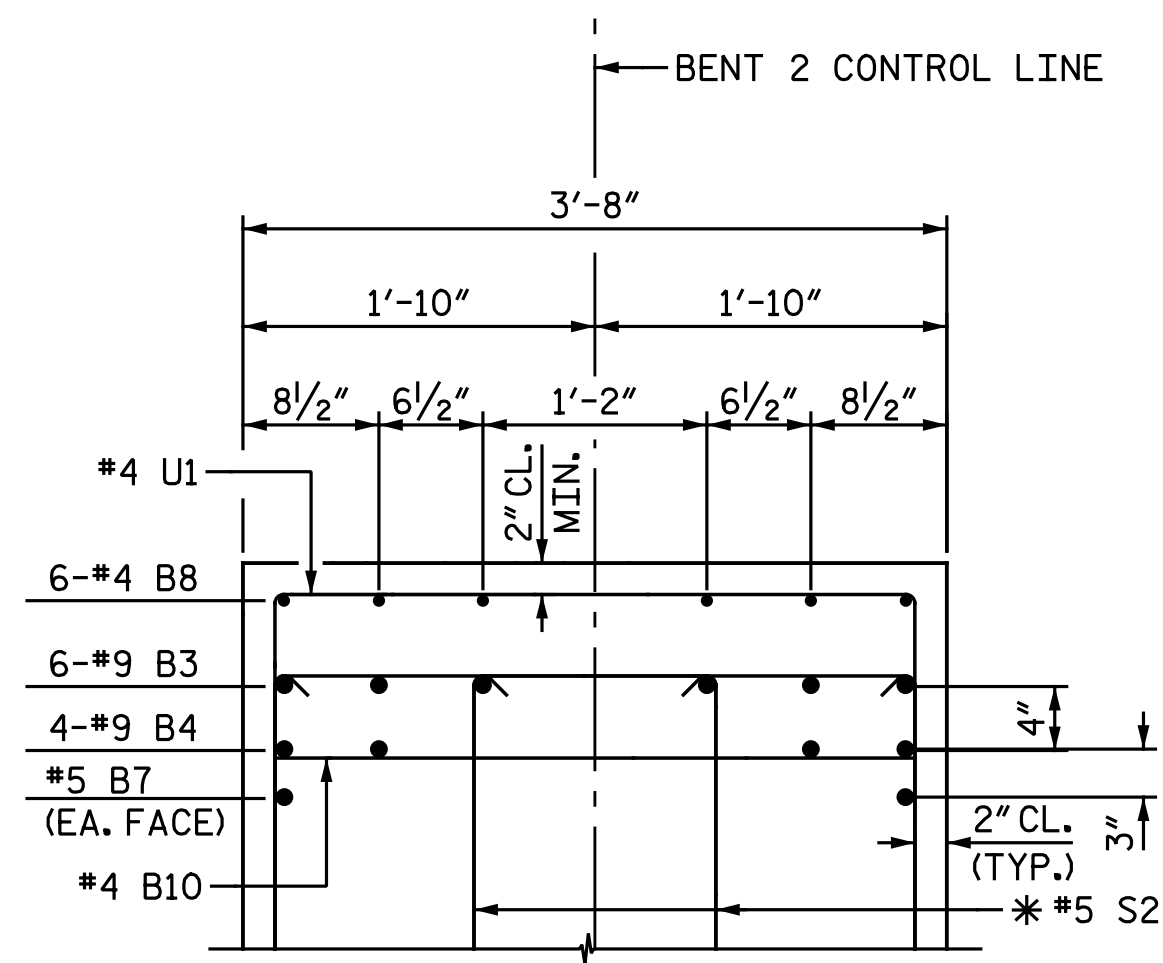


PLAN OF DRILLED PIERS & COLUMNS



SECTION A-A
* INVERT ALTERNATE STIRRUPS



PARTIAL SECTION B-B
* INVERT ALTERNATE STIRRUPS

NOTES:

STIRRUPS AND "U" BARS IN CAP MAY BE SHIFTED AS NECESSARY TO CLEAR ANCHOR BOLTS.

HOOKS ON "M" BARS MAY BE TURNED AS NECESSARY FOR PLACING REINFORCING STEEL.

FOR DRILLED PIERS, SEE GEOTECHNICAL SPECIAL PROVISIONS AND SECTION 411 OF THE STANDARD SPECIFICATIONS.

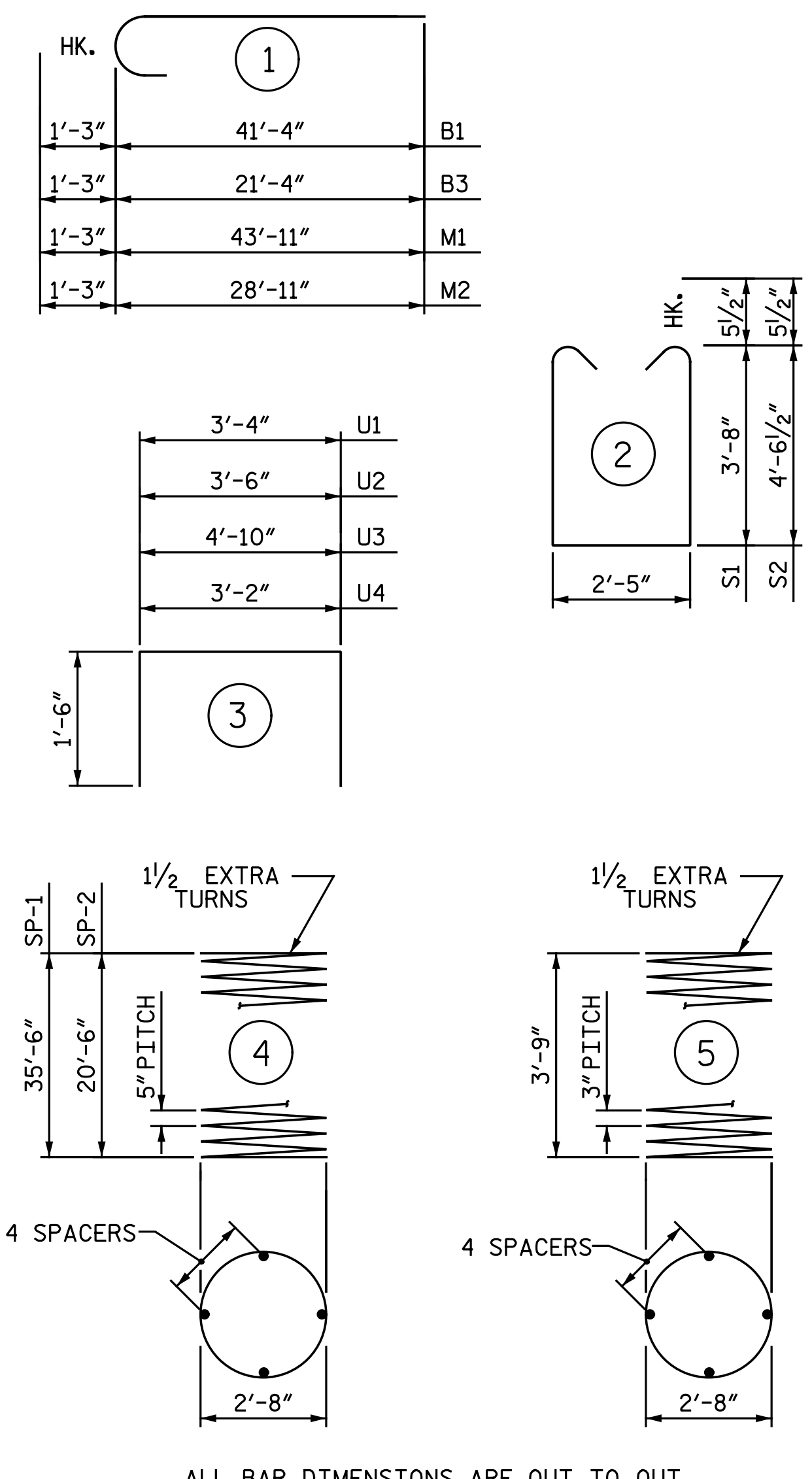
ALL STEEL IN THE DRILLED PIERS IS INCLUDED IN THE PAY ITEMS FOR "REINFORCING STEEL" AND "SPIRAL COLUMN REINFORCING STEEL".

THE LOCATION OF THE CONSTRUCTION JOINT IN THE DRILLED PIERS IS BASED ON AN APPROXIMATE GROUND LINE ELEVATION. IF THE CONSTRUCTION JOINT IS ABOVE THE ACTUAL GROUND ELEVATION, THE CONTRACTOR SHALL PLACE THE CONSTRUCTION JOINT 1 FOOT BELOW THE GROUND LINE.

THE CONTRACTOR'S ATTENTION IS CALLED TO THE FACT THAT THE LONGITUDINAL REINFORCEMENT FOR THE DRILLED PIERS IS DETAILED WITH 3 FEET OF EXTRA LENGTH.

FOR ADDITIONAL INFORMATION AND NOTES, SEE "GENERAL DRAWING", SHEET 3 OF 5.

BAR TYPES



ALL BAR DIMENSIONS ARE OUT TO OUT.

BILL OF MATERIAL

BENT 2 - STAGE II					
BAR	NO.	SIZE	TYPE	LENGTH	WEIGHT
B1	6	#9	1	42' - 7"	869
B2	4	#9	STR	41' - 4"	562
B3	6	#9	1	22' - 7"	461
B4	4	#9	STR	21' - 4"	290
B5	14	#9	STR	32' - 0"	1,523
B6	12	#5	STR	30' - 4"	380
B7	2	#5	STR	21' - 5"	45
B8	24	#4	STR	9' - 1"	146
B9	6	#4	STR	2' - 11"	12
B10	17	#4	STR	3' - 4"	38
M1	20	#9	1	45' - 2"	3,071
M2	20	#9	1	30' - 2"	2,051
S1	68	#5	2	10' - 8"	757
S2	40	#5	2	12' - 5"	518
U1	64	#4	3	6' - 4"	271
U2	3	#4	3	6' - 6"	13
U3	3	#4	3	7' - 10"	16
U4	7	#4	3	6' - 2"	29
REINFORCING STEEL				LBS.	11,052
SP-1	2	*	4	725' - 5"	1,513
SP-2	2	*	4	429' - 4"	896
SP-3	4	**	5	148' - 6"	397
SPIRAL COLUMN REINFORCING STEEL				LBS.	2,806
* THE SP-1 & SP-2 SPIRAL REINF. STEEL SHALL BE W31 OR D-31 COLD DRAWN WIRE OR #5 PLAIN OR DEFORMED BAR.					
** THE SP-3 SPIRAL REINF. STEEL SHALL BE W20 OR D-20 COLD DRAWN WIRE OR #4 PLAIN OR DEFORMED BAR.					
CLASS A CONCRETE					
POUR 2 - COLUMNS				C.Y.	3.7
POUR 3 - CAP				C.Y.	36.4
TOTAL CLASS A CONCRETE				C.Y.	40.1
DRILLED PIER CONCRETE					
POUR 1 - DRILLED PIERS				C.Y.	40.6
3'-6" DIA. DRILLED PIERS IN SOIL				LIN. FT.	78.0
3'-6" DIA. DRILLED PIERS NOT IN SOIL				LIN. FT.	36.0
SID INSPECTIONS				EA.	1
▲ CSL TUBES				LIN. FT.	480

▲ NO SEPARATE PAYMENT WILL BE MADE FOR CSL TUBES. CSL TUBES WILL BE INCLUDED IN THE UNIT BID PRICE FOR DRILLED PIERS.

PROJECT NO. U-3330
NASH COUNTY
STATION: 61+03.00 -L-

DRAWN BY : M. D. MAYHEW DATE : 12-6-16
CHECKED BY : A. H. SHARPE DATE : 12-9-16

DOCUMENT NOT CONSIDERED FINAL UNLESS ALL SIGNATURES COMPLETED

DocuSigned by:
Todd M. Garrison
61EAF7523943466
2/3/2017

Michael Baker International
Michael Baker Engineering
8000 Regency Parkway, Suite 600
Cary, North Carolina 27518
NC License No.: F-1084

STATE OF NORTH CAROLINA
DEPARTMENT OF TRANSPORTATION
RALEIGH
SUBSTRUCTURE
BENT 2 DETAILS
STAGE II

REVISIONS						SHEET NO.
NO.	BY:	DATE:	NO.	BY:	DATE:	S3-35
1			3			TOTAL SHEETS
2			4			42