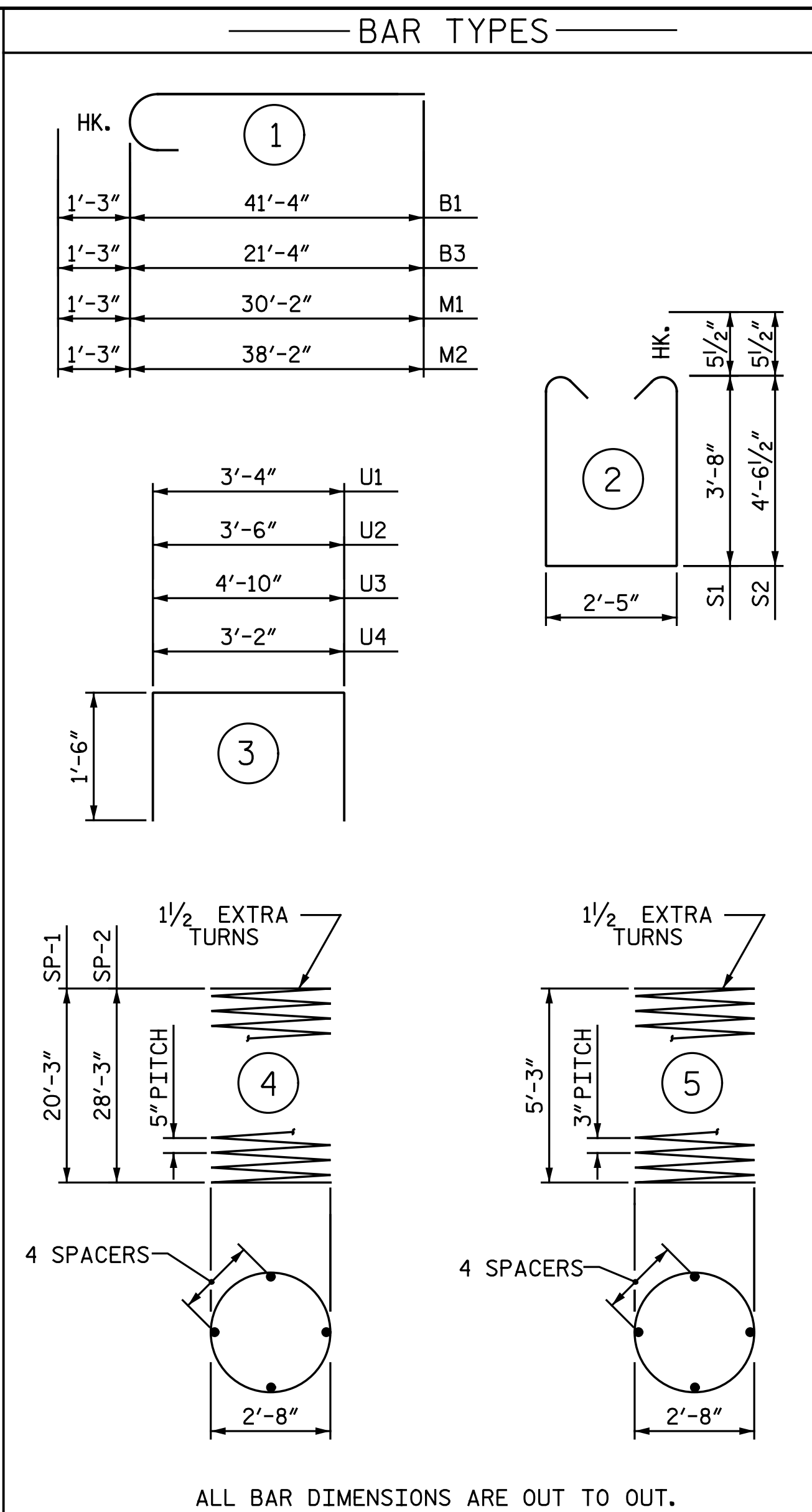


PLAN OF DRILLED PIERS & COLUMNS



ALL BAR DIMENSIONS ARE OUT TO OUT.

BILL OF MATERIAL					
BENT 1 - STAGE II					
BAR	NO.	SIZE	TYPE	LENGTH	WEIGHT
B1	6	#9	1	42' - 7"	869
B2	4	#9	STR	41' - 4"	562
B3	6	#9	1	22' - 7"	461
B4	4	#9	STR	21' - 4"	290
B5	14	#9	STR	32' - 0"	1,523
B6	12	#5	STR	30' - 4"	380
B7	2	#5	STR	21' - 5"	45
B8	24	#4	STR	9' - 1"	146
B9	6	#4	STR	2' - 11"	12
B10	17	#4	STR	3' - 4"	38
M1	10	#9	1	31' - 5"	1,068
M2	30	#9	1	39' - 5"	4,021
S1	68	#5	2	10' - 8"	757
S2	40	#5	2	12' - 5"	518
U1	64	#4	3	6' - 4"	271
U2	3	#4	3	6' - 6"	13
U3	3	#4	3	7' - 10"	16
U4	7	#4	3	6' - 2"	29

REINFORCING STEEL					LBS.
SP-1	1	*	4	424' - 5"	443
SP-2	3	*	4	582' - 4"	1,822
SP-3	4	**	5	198' - 0"	529

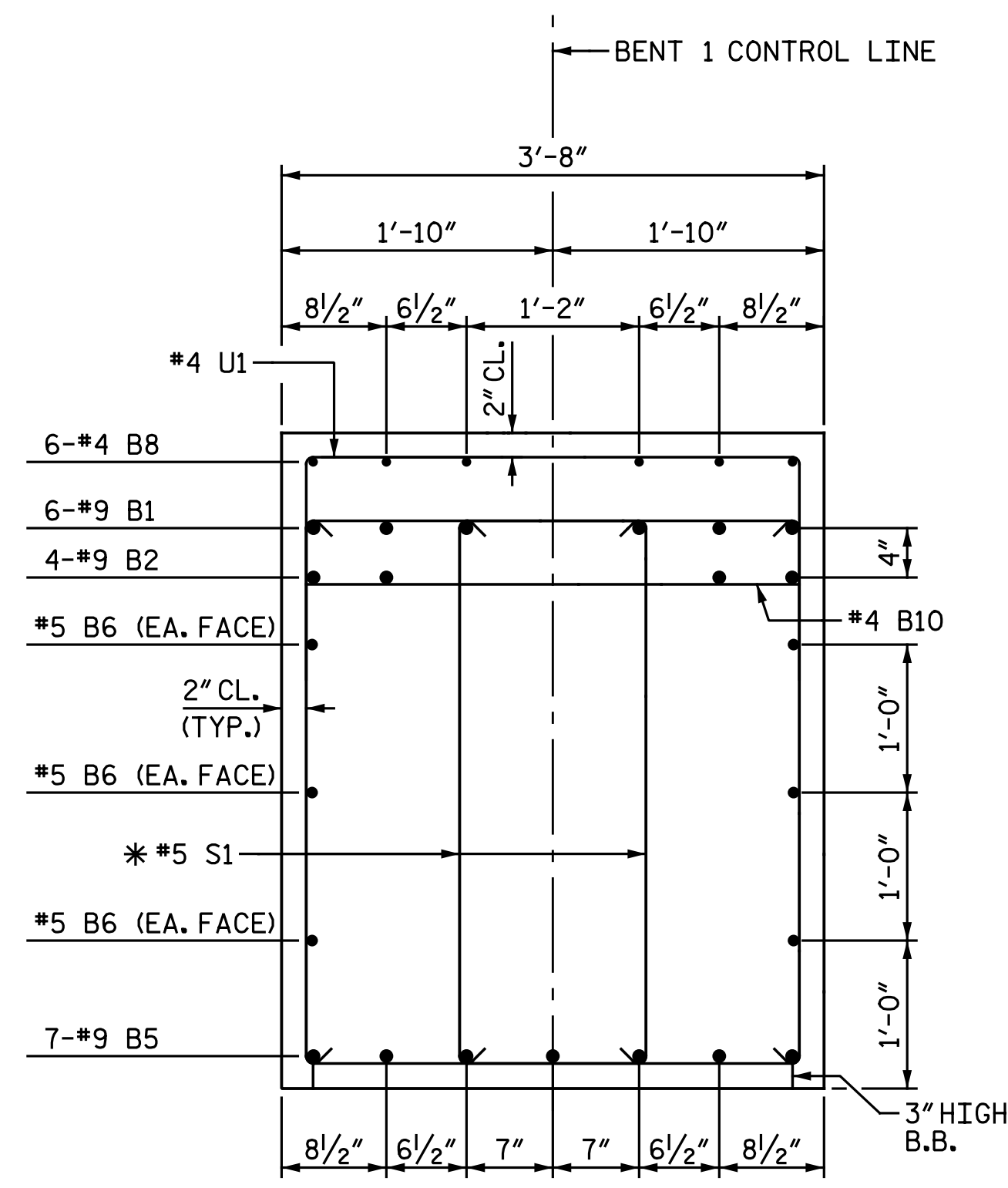
SPIRAL COLUMN REINFORCING STEEL					LBS.
SP-1	1	*	4	424' - 5"	443
SP-2	3	*	4	582' - 4"	1,822
SP-3	4	**	5	198' - 0"	529

CLASS A CONCRETE  
 POUR 2 - COLUMNS C.Y. 5.3  
 POUR 3 - CAP C.Y. 36.4  
 TOTAL CLASS A CONCRETE C.Y. 41.7

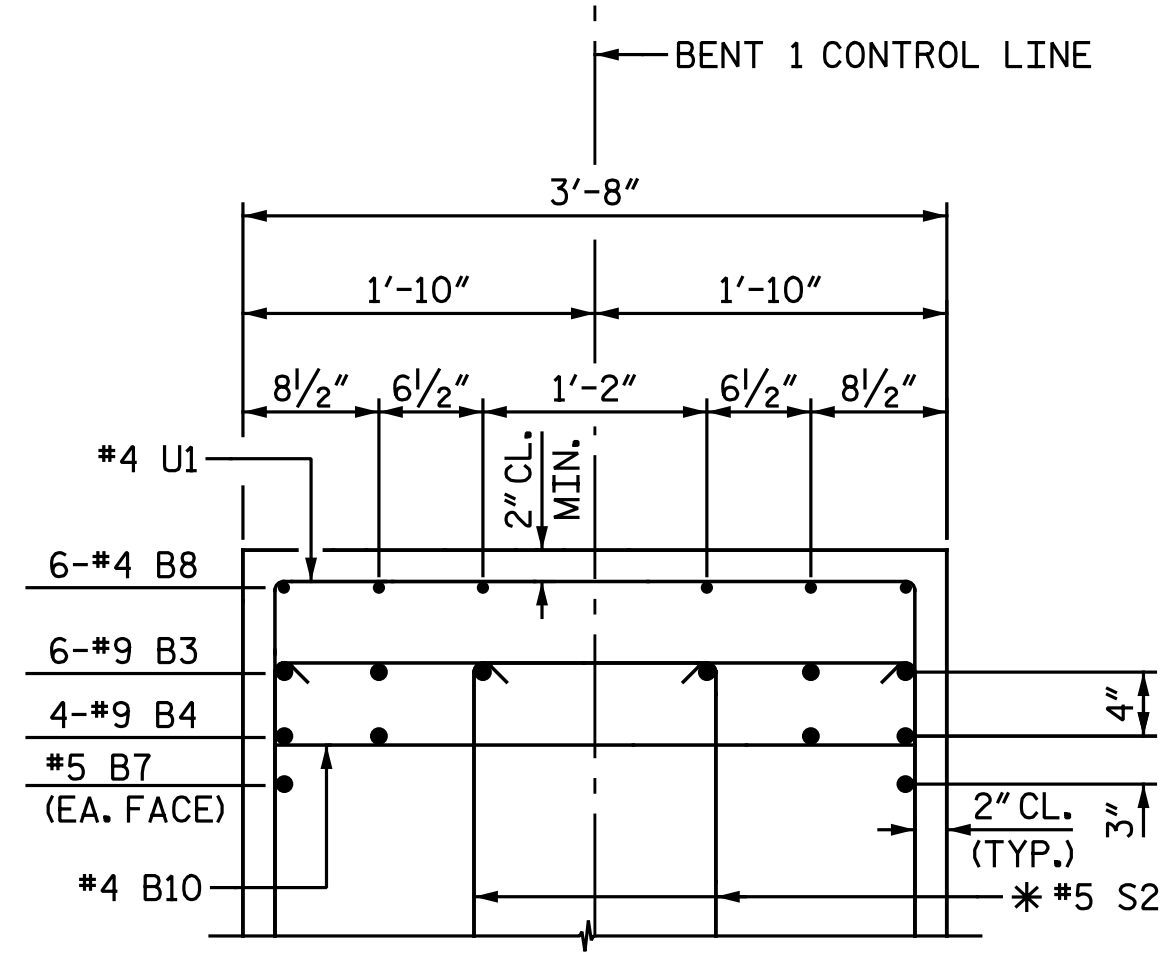
DRILLED PIER CONCRETE  
 POUR 1 - DRILLED PIERS C.Y. 38.2  
 3'-6" DIA. DRILLED PIERS IN SOIL LIN. FT. 66.0  
 3'-6" DIA. DRILLED PIERS NOT IN SOIL LIN. FT. 41.0

SID INSPECTIONS	EA.	1
CSL TUBES	LIN. FT.	452

▲ NO SEPARATE PAYMENT WILL BE MADE FOR CSL TUBES. CSL TUBES WILL BE INCLUDED IN THE UNIT BID PRICE FOR DRILLED PIERS.



SECTION A-A  
 \* INVERT ALTERNATE STIRRUPS



PARTIAL SECTION B-B  
 \* INVERT ALTERNATE STIRRUPS

- NOTES:**
- STIRRUPS AND "U" BARS IN CAP MAY BE SHIFTED AS NECESSARY TO CLEAR ANCHOR BOLTS.
  - HOOKS ON "M" BARS MAY BE TURNED AS NECESSARY FOR PLACING REINFORCING STEEL.
  - FOR DRILLED PIERS, SEE GEOTECHNICAL SPECIAL PROVISIONS AND SECTION 411 OF THE STANDARD SPECIFICATIONS.
  - ALL STEEL IN THE DRILLED PIERS IS INCLUDED IN THE PAY ITEMS FOR "REINFORCING STEEL" AND "SPIRAL COLUMN REINFORCING STEEL".
  - DRILLED PIERS SHOULD BE TERMINATED A MINIMUM OF ONE FOOT ABOVE NORMAL WATER SURFACE ELEVATION FOR SHAFTS LOCATED IN WATER.
  - THE CONTRACTOR'S ATTENTION IS CALLED TO THE FACT THAT THE LONGITUDINAL REINFORCEMENT FOR THE DRILLED PIERS IS DETAILED WITH 3 FEET OF EXTRA LENGTH.
  - FOR ADDITIONAL INFORMATION AND NOTES, SEE "GENERAL DRAWING", SHEET 3 OF 5.

PROJECT NO. U-3330  
NASH COUNTY  
 STATION: 61+03.00 -L-

DRAWN BY : M. D. MAYHEW DATE : 12-6-16  
 CHECKED BY : A. H. SHARPE DATE : 12-8-16

DOCUMENT NOT CONSIDERED FINAL UNLESS ALL SIGNATURES COMPLETED		STATE OF NORTH CAROLINA DEPARTMENT OF TRANSPORTATION RALEIGH SUBSTRUCTURE BENT 1 DETAILS STAGE II	
		REVISIONS	
	<b>Michael Baker INTERNATIONAL</b>	Michael Baker Engineering 8000 Regency Parkway, Suite 600 Cary, North Carolina 27518 NC License No.: F-1084	

NO.	BY:	DATE:	NO.	BY:	DATE:
1			3		
2			4		

SHEET NO.	
S3-31	TOTAL SHEETS
42	42