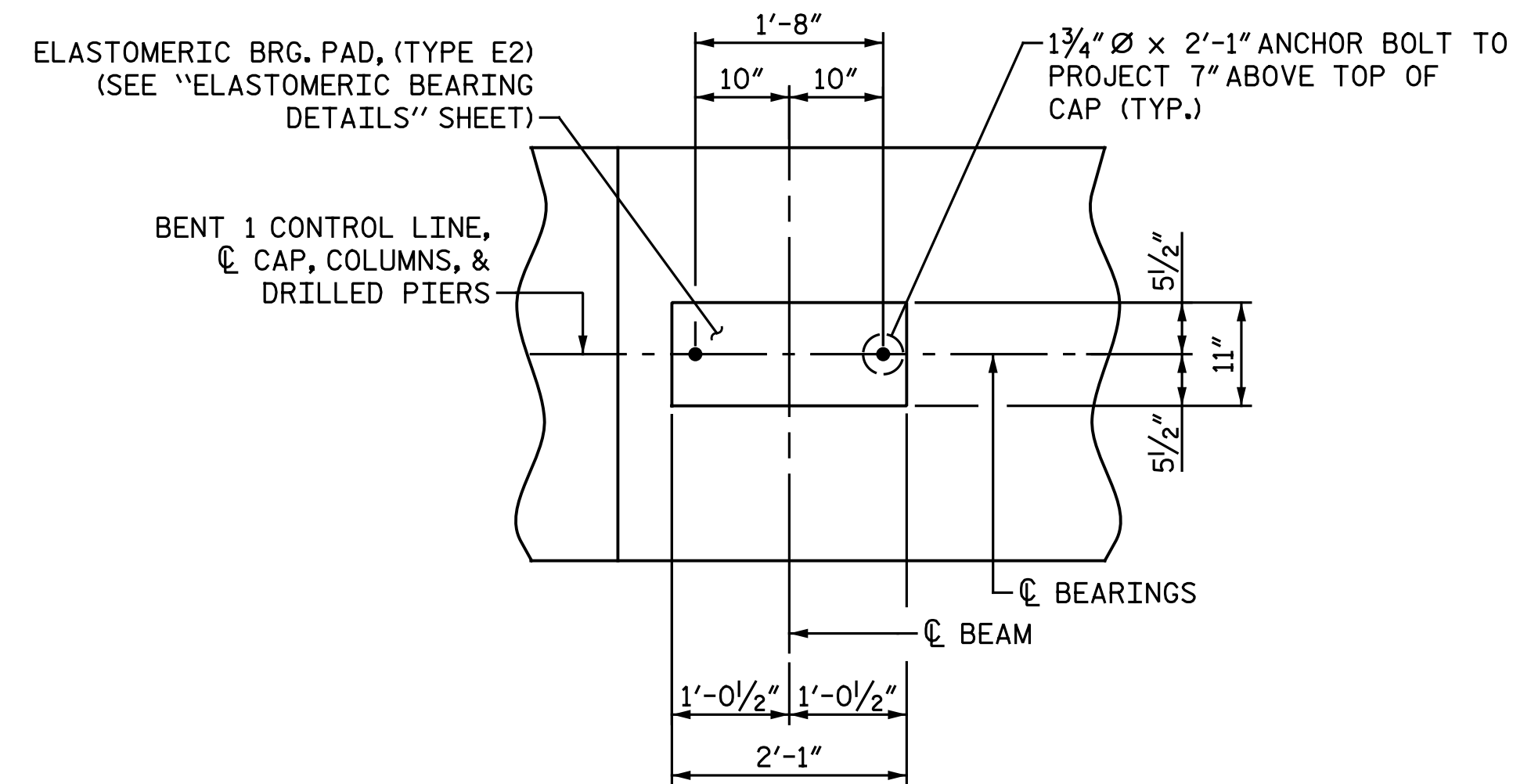
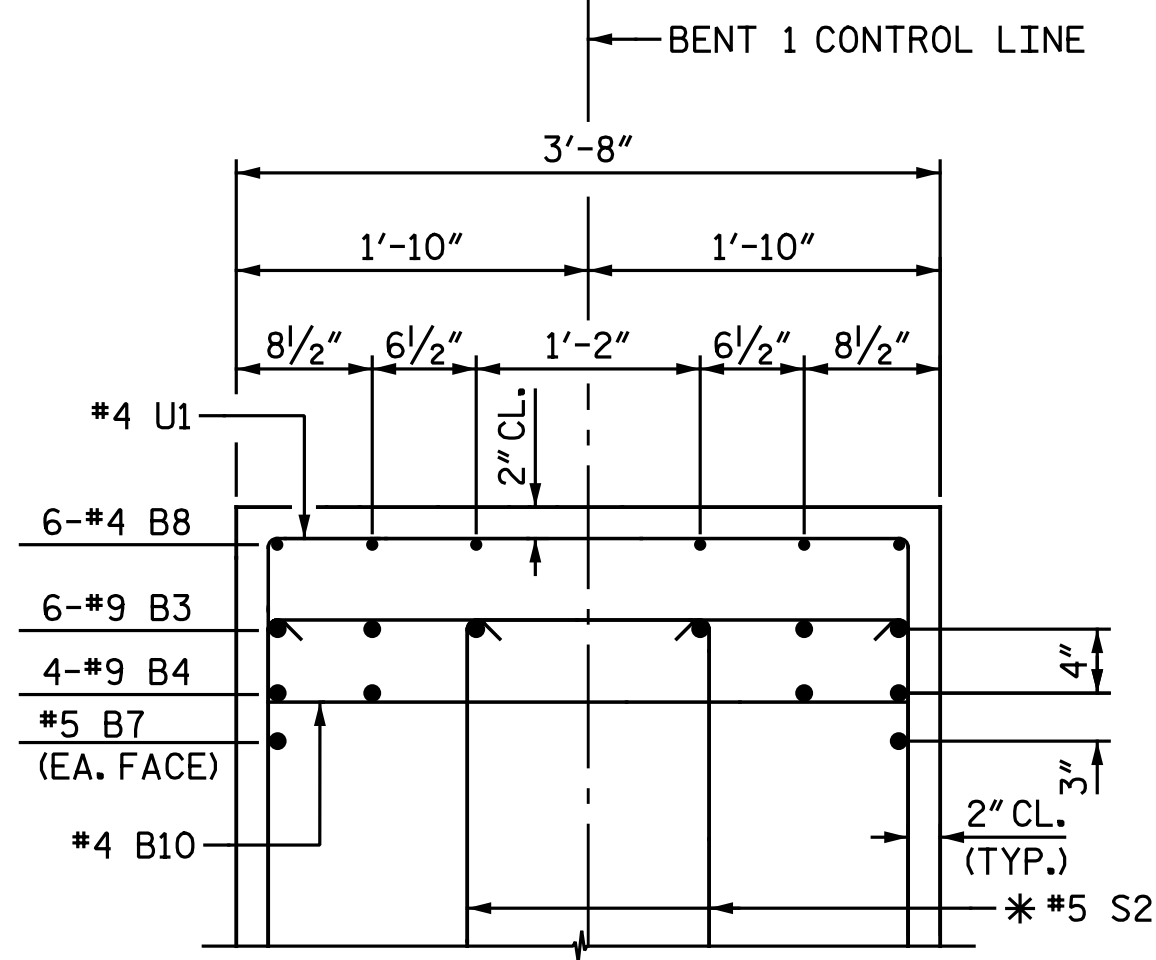


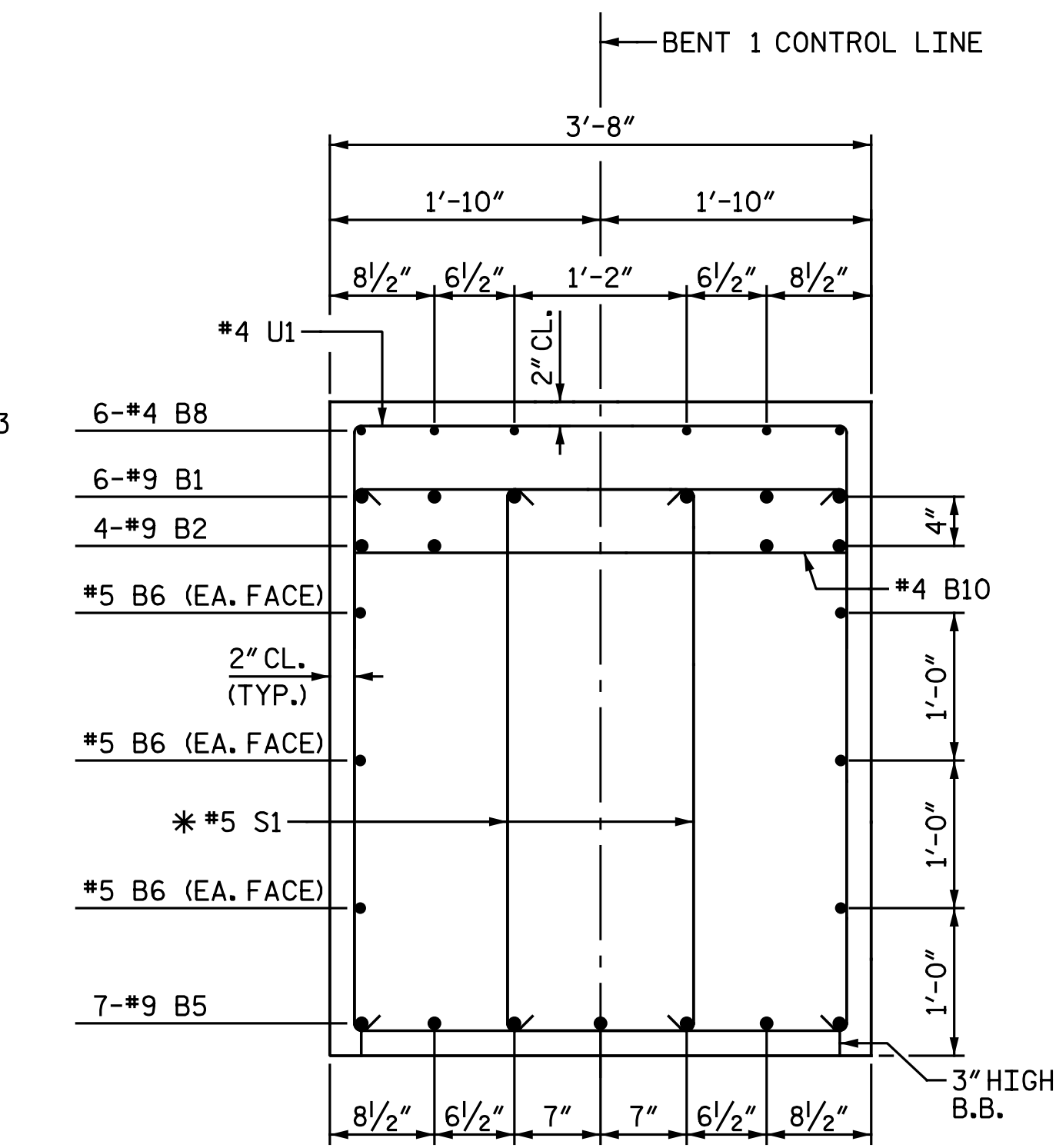
PLAN OF DRILLED PIERS & COLUMNS



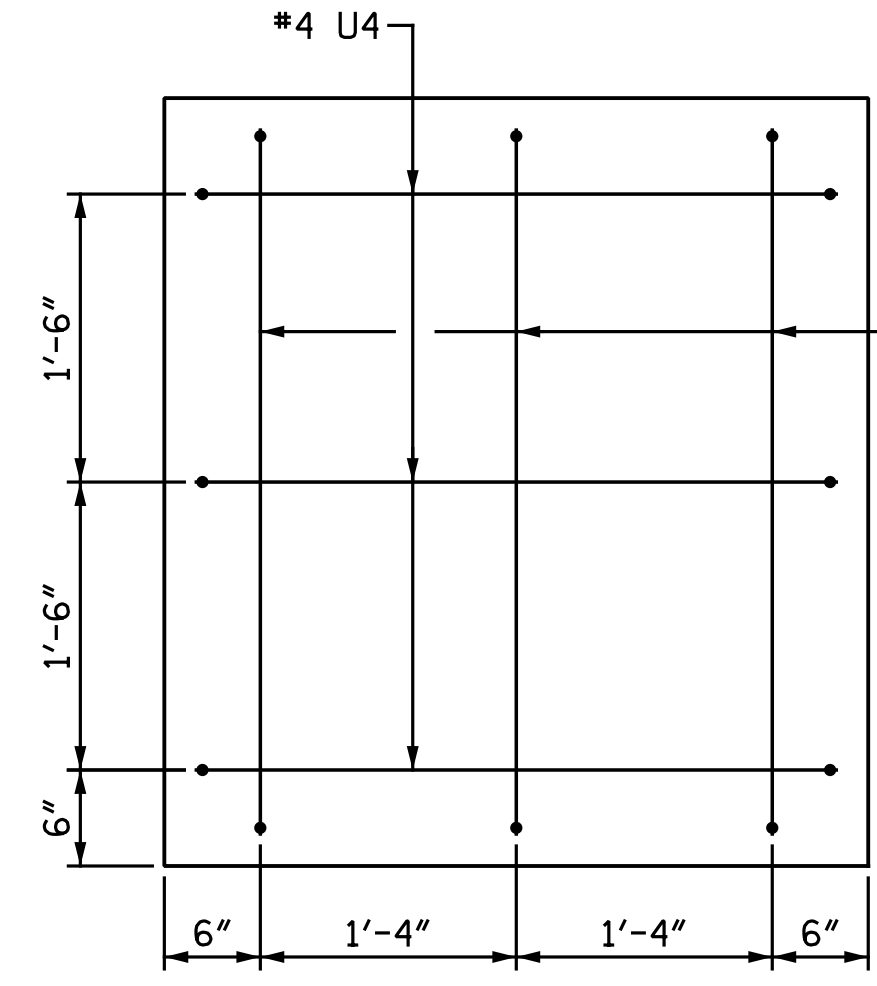
DETAIL "A"
DIMENSIONS ARE TYPICAL FOR EACH BEARING



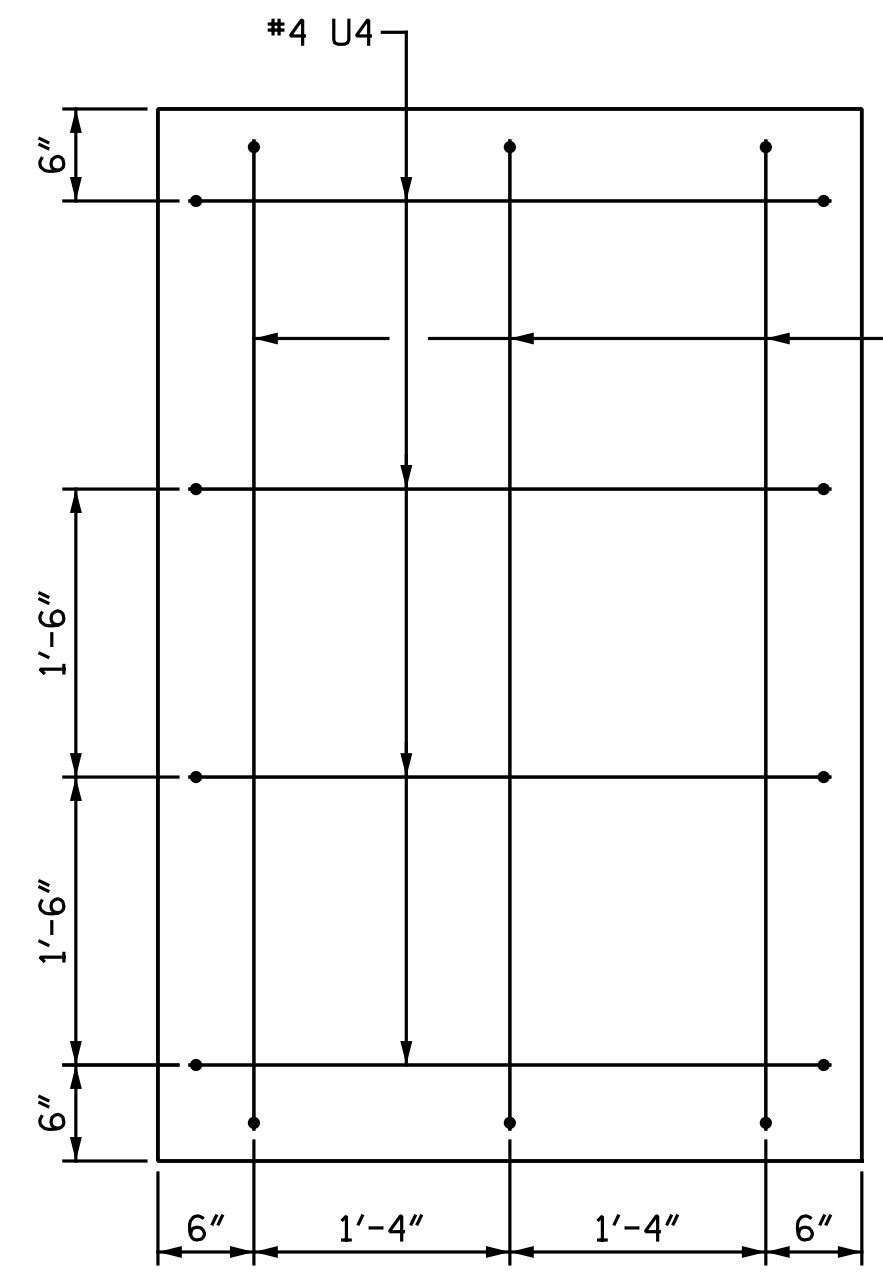
PARTIAL SECTION B-B
* INVERT ALTERNATE STIRRUPS



SECTION A-A
* INVERT ALTERNATE STIRRUPS

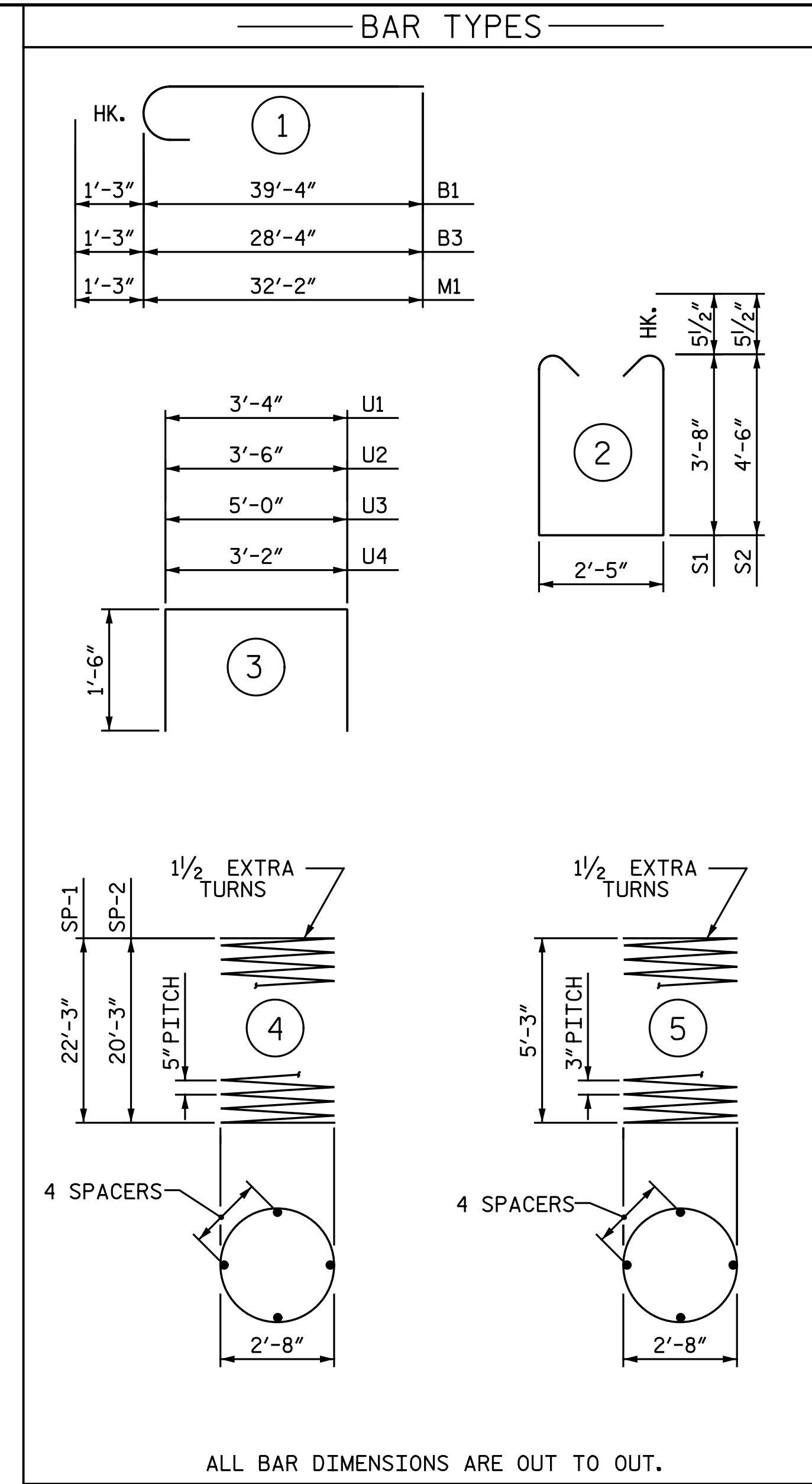


VIEW X-X



VIEW Y-Y

DRAWN BY : M. D. MAYHEW DATE : 11-21-16
CHECKED BY : A. H. SHARPE DATE : 12-7-16



ALL BAR DIMENSIONS ARE OUT TO OUT.

NOTES:
FOR NOTES, SEE "BENT 1 DETAILS (STAGE II)" SHEET.

BILL OF MATERIAL					
BENT 1 - STAGE I					
BAR	NO.	SIZE	TYPE	LENGTH	WEIGHT
B1	6	#9	1	40' - 7"	828
B2	4	#9	STR	39' - 4"	535
B3	6	#9	1	29' - 7"	603
B4	4	#9	STR	28' - 5"	386
B5	14	#9	STR	34' - 6"	1,642
B6	12	#5	STR	32' - 10"	411
B7	2	#5	STR	28' - 5"	59
B8	18	#4	STR	8' - 4"	100
B9	6	#4	STR	2' - 11"	12
B10	18	#4	STR	3' - 4"	40
M1	40	#9	1	33' - 5"	4,545
S1	112	#5	2	10' - 8"	1,246
S2	88	#5	2	12' - 4"	1,132
U1	57	#4	3	6' - 4"	241
U2	3	#4	3	6' - 6"	13
U3	3	#4	3	8' - 0"	16
U4	7	#4	3	6' - 2"	29
REINFORCING STEEL					LBS. 11,838
SP-1	3	*	4	463' - 10"	1,451
SP-2	1	*	4	424' - 5"	443
SP-3	4	**	5	198' - 0"	529
SPIRAL COLUMN REINFORCING STEEL					LBS. 2,423
* THE SP-1 & SP-2 SPIRAL REINF. STEEL SHALL BE W31 OR D-31 COLD DRAWN WIRE OR #5 PLAIN OR DEFORMED BAR.					
** THE SP-3 SPIRAL REINF. STEEL SHALL BE W20 OR D-20 COLD DRAWN WIRE OR #4 PLAIN OR DEFORMED BAR.					
CLASS A CONCRETE					
POUR 2 - COLUMNS				C.Y.	5.3
POUR 3 - CAP				C.Y.	40.1
TOTAL CLASS A CONCRETE				C.Y.	45.4
DRILLED PIER CONCRETE					
POUR 1 - DRILLED PIERS				C.Y.	31.8
3'-6" DIA. DRILLED PIERS IN SOIL				LIN. FT.	50.0
3'-6" DIA. DRILLED PIERS NOT IN SOIL				LIN. FT.	39.0
PERMANENT STEEL CASING FOR 3'-6" DIA. DRILLED PIER				LIN. FT.	42.2
SID INSPECTIONS				EA.	1
▲ CSL TUBES				LIN. FT.	380

PROJECT NO. U-3330
NASH COUNTY
STATION: 61+03.00 -L-

DOCUMENT NOT CONSIDERED FINAL UNLESS ALL SIGNATURES COMPLETED			STATE OF NORTH CAROLINA DEPARTMENT OF TRANSPORTATION RALEIGH SUBSTRUCTURE BENT 1 DETAILS STAGE I		
	REVISIONS				
	NO.	BY:	DATE:	NO.	BY:
1			3		
2			4		

SHEET NO. S3-29
TOTAL SHEETS 42

Michael Baker International
Michael Baker Engineering
8000 Regency Parkway, Suite 600
Cary, North Carolina 27518
NC License No.: F-1084