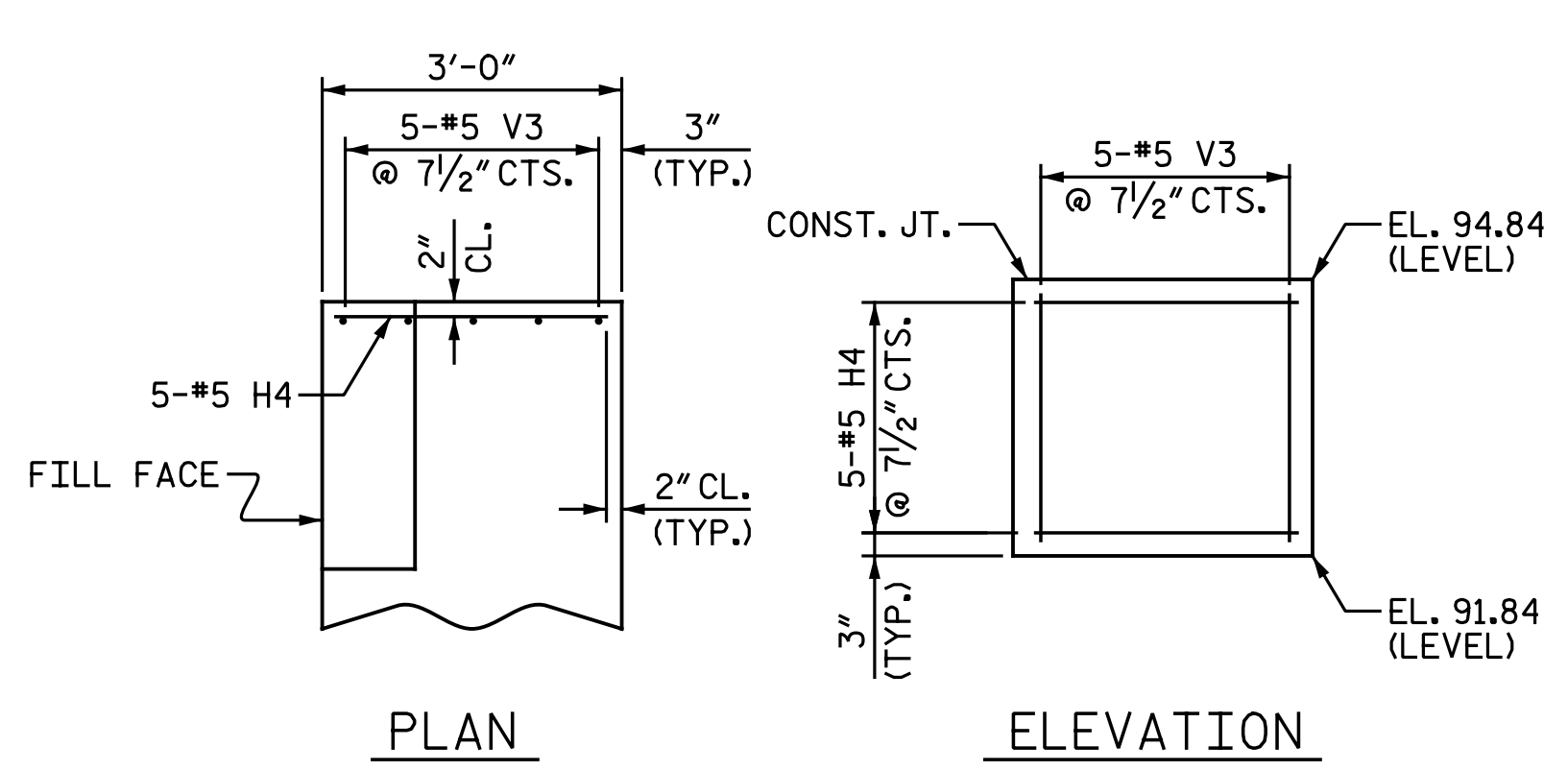
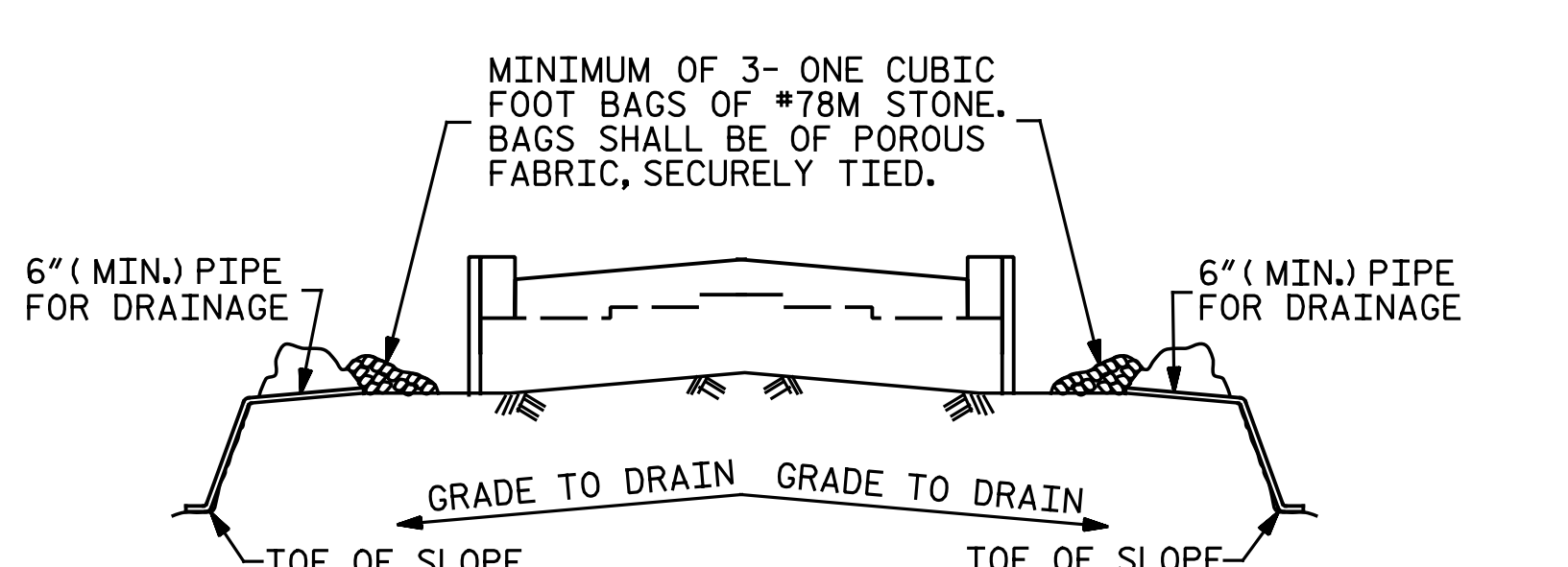


WALL ATTACHMENT
STAGE I



LEFT END BENT CAP
STAGE I



BAGGED STONE AND PIPE SHALL BE PLACED IMMEDIATELY AFTER COMPLETION OF END BENT EXCAVATION. PIPE MAY BE EITHER CONCRETE, CORRUGATED STEEL, CORRUGATED ALUMINUM ALLOY, OR CORRUGATED PLASTIC. PERFORATED PIPE WILL NOT BE ALLOWED.

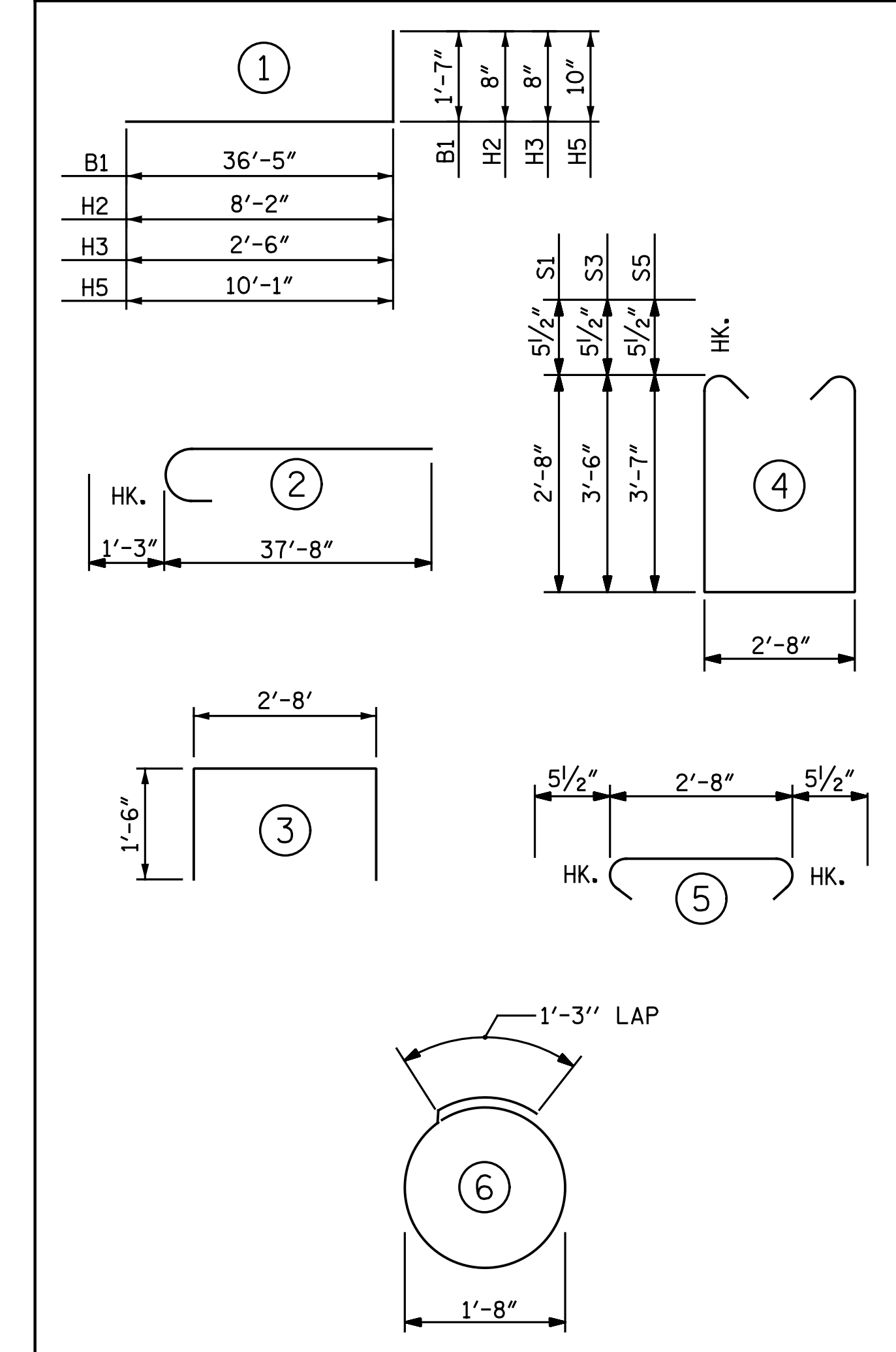
BAGGED STONE SHALL REMAIN IN PLACE UNTIL THE ENGINEER DIRECTS THAT IT BE REMOVED. THE CONTRACTOR SHALL REMOVE AND DISPOSE OF SILT ACCUMULATIONS AT BAGGED STONE WHEN SO DIRECTED BY THE ENGINEER. BAGS SHALL BE REMOVED AND REPLACED WHENEVER THE ENGINEER DETERMINES THAT THEY HAVE DETERIORATED AND LOST THEIR EFFECTIVENESS.

NO SEPARATE PAYMENT WILL BE MADE FOR THIS WORK AND THE ENTIRE COST OF THIS WORK SHALL BE INCLUDED IN THE UNIT CONTRACT PRICE BID FOR THE SEVERAL PAY ITEMS.

TEMPORARY DRAINAGE AT END BENT

DRAWN BY : N. B. SPEAKS DATE : 12-2-16
 CHECKED BY : A. H. SHARPE DATE : 12-2-16

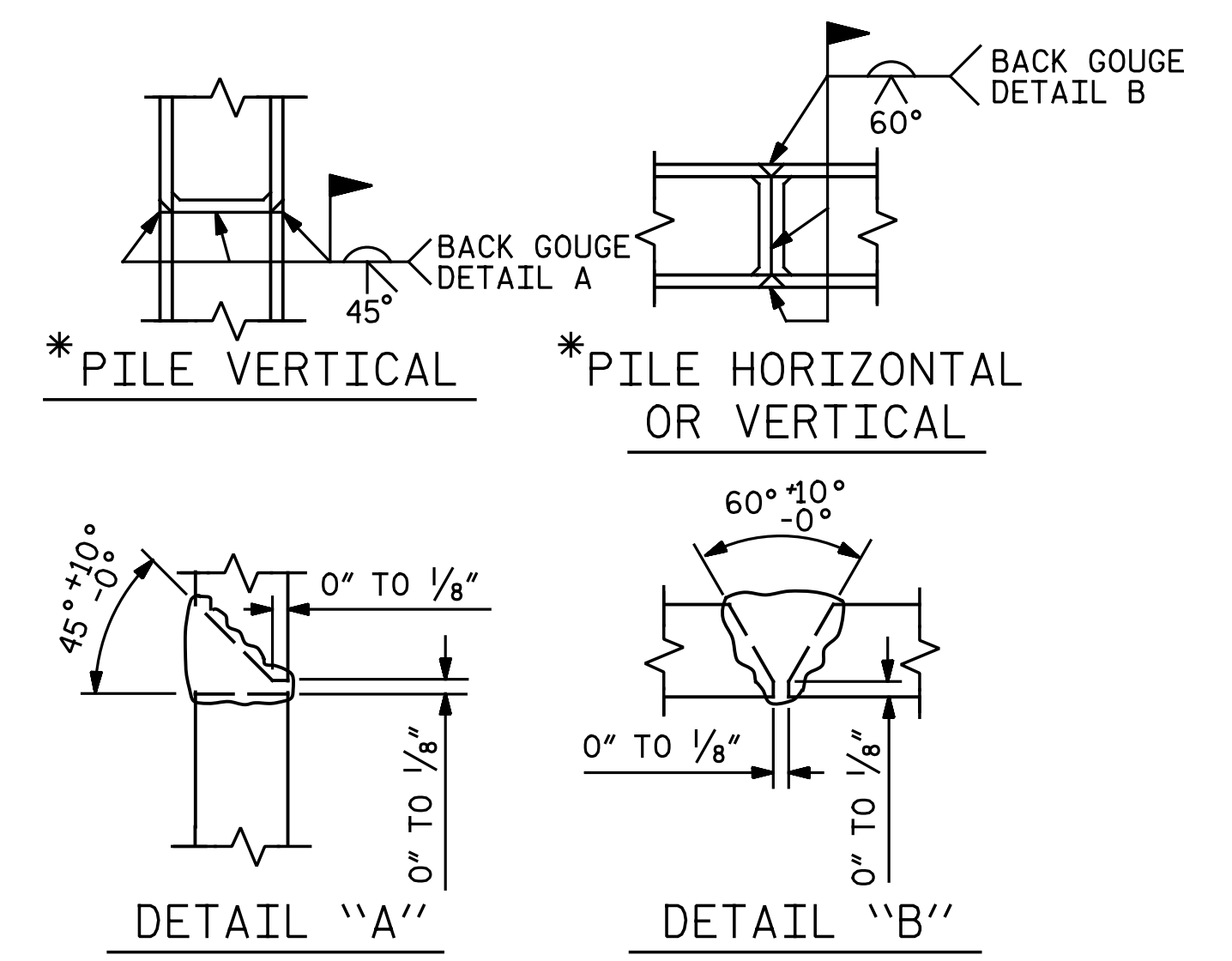
BAR TYPES



ALL BAR DIMENSIONS ARE OUT TO OUT.

BILL OF MATERIAL

END BENT 1												
STAGE I					STAGE II							
BAR	NO.	SIZE	TYPE	LENGTH	WEIGHT	BAR	NO.	SIZE	TYPE	LENGTH	WEIGHT	
B1	8	#9		38'-0"	1,034	B1	8	#9		38'-0"	1,034	
B2	8	#9	STR	37'-5"	1,018	B2	8	#9	STR	37'-5"	1,018	
B3	4	#9		38'-11"	529	B3	4	#9		38'-11"	529	
B4	4	#9	STR	38'-8"	526	B4	4	#9	STR	38'-8"	526	
B5	4	#9	STR	29'-1"	396	B6	24	#4	STR	24'-8"	395	
B6	24	#4	STR	24'-8"	395	B9	38	#4	STR	2'-8"	68	
B7	12	#4	STR	8'-4"	67	B10	4	#9	STR	24'-1"	328	
B8	4	#4	STR	5'-2"	14	B11	16	#4	STR	8'-11"	95	
B9	40	#4	STR	2'-8"	71	B12	4	#4	STR	6'-9"	18	
H1	12	#4	STR	3'-6"	28	H2	17	#4		1	8'-10"	100
H4	5	#5	STR	2'-8"	14	H3	12	#4		1	3'-2"	25
S1	57	#5		8'-11"	530	H5	5	#5		1	10'-11"	57
S2	99	#5		3'-7"	370	S1	58	#5		4	8'-11"	539
S3	42	#5		10'-7"	464	S2	95	#5		5	3'-7"	355
S4	32	#4		6'-6"	139	S4	32	#4		6	6'-6"	139
U1	20	#4		5'-8"	76	S5	37	#5		4	10'-9"	415
V1	102	#4	STR	6'-1"	414	U1	29	#4		3	5'-8"	110
V2	8	#4	STR	6'-7"	35	V1	110	#4	STR	6'-1"	447	
V3	5	#5	STR	2'-8"	14	V2	26	#4	STR	6'-7"	114	
						V4	2	#5	STR	2'-7"	5	
REINFORCING STEEL					LBS. 6,134	REINFORCING STEEL					LBS. 6,317	
CLASS A CONCRETE						CLASS A CONCRETE						
POUR 1 - CAP & COLLAR					C.Y. 28.3	POUR 1 - CAP, LOWER PART OF WING OF COLLAR					C.Y. 28.5	
POUR 2 - BACKWALL					C.Y. 0.6	POUR 2 - UPPER PART OF WING					C.Y. 1.6	
TOTAL CLASS A CONCRETE					C.Y. 28.9	TOTAL CLASS A CONCRETE					C.Y. 30.1	
HP 12 x 53 STEEL PILES						HP 12 x 53 STEEL PILES						
NO. 8					L.F. 200	NO. 8					L.F. 200	
PILE DRIVING EQUIPMENT SETUP FOR HP 12 x 53 STEEL PILES					EA. 8	PILE DRIVING EQUIPMENT SETUP FOR HP 12 x 53 STEEL PILES					EA. 8	



PILE SPLICE DETAILS
 * POSITION OF PILE DURING WELDING.

PROJECT NO. U-3330
 NASH COUNTY
 STATION: 61+03.00 -L-
 SHEET 2 OF 2

STATE OF NORTH CAROLINA
 DEPARTMENT OF TRANSPORTATION
 RALEIGH
 SUBSTRUCTURE
 INTEGRAL END BENT 1
 DETAILS

REVISIONS

NO.	BY:	DATE:	NO.	BY:	DATE:
1			3		
2			4		

SHEET NO. S3-27
 TOTAL SHEETS 42

Michael Baker Engineering
 8000 Regency Parkway, Suite 600
 Cary, North Carolina 27518
 NC License No.: F-1084

DocuSigned by:
 Jim M. Baker
 61EAF7523943466
 2/15/2017

Michael Baker INTERNATIONAL