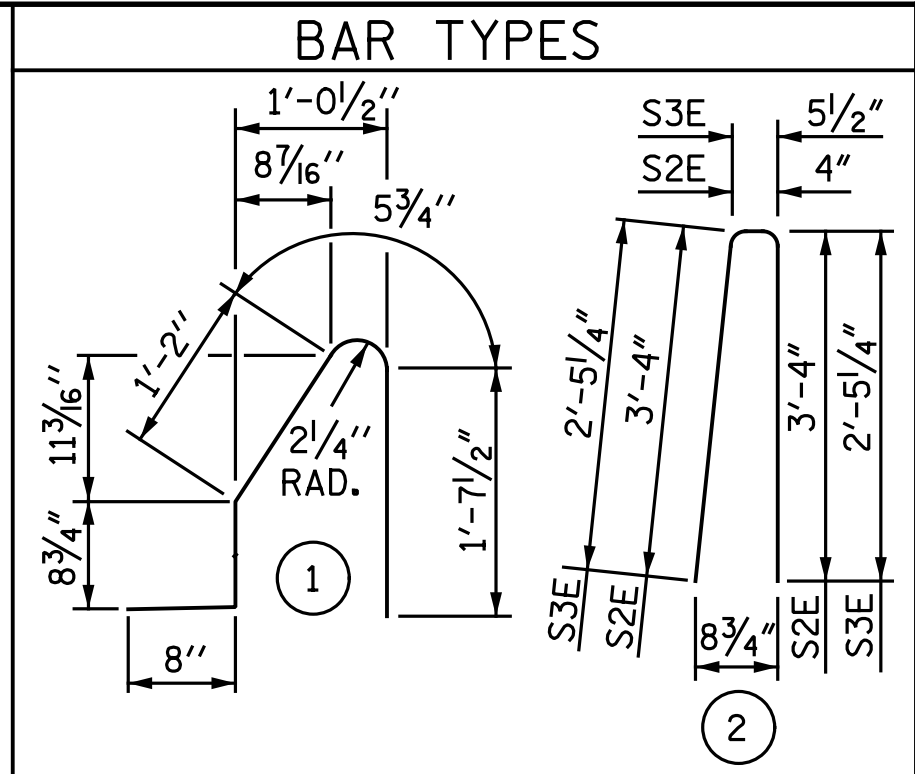


NOTES

THE BARRIER RAIL IN A CONTINUOUS UNIT SHALL NOT BE CAST UNTIL ALL SLAB CONCRETE IN THE UNIT HAS BEEN CAST AND HAS REACHED A MINIMUM COMPRESSIVE STRENGTH OF 3,000 PSI.

ALL REINFORCING STEEL IN BARRIER RAILS SHALL BE EPOXY COATED.

GROOVED CONTRACTION JOINTS, 1/2" IN DEPTH, SHALL BE TOOLED IN ALL EXPOSED FACES OF THE BARRIER RAIL AND IN ACCORDANCE WITH ARTICLE 825-10(B) OF THE STANDARD SPECIFICATIONS. THE CONTRACTION JOINT SHALL BE LOCATED AT EACH THIRD POINT BETWEEN BARRIER RAIL EXPANSION JOINTS. ONLY ONE CONTRACTION JOINT IS REQUIRED AT MIDPOINT OF BARRIER RAIL SEGMENTS LESS THAN 20 FEET IN LENGTH AND NO CONTRACTION JOINTS ARE REQUIRED FOR THOSE SEGMENTS LESS THAN 10 FEET IN LENGTH.



ALL BAR DIMENSIONS ARE OUT TO OUT

BILL OF MATERIAL

FOR CONCRETE BARRIER RAIL ONLY

STAGE I					
BAR	NO.	SIZE	TYPE	LENGTH	WEIGHT
B1E	22	#5	STR	16'-4"	375
B2E	88	#5	STR	20'-10"	1912
S1E	210	#5	1	4'-8"	1022
S2E	206	#5	2	7'-0"	1504
S3E	4	#5	2	5'-4"	22

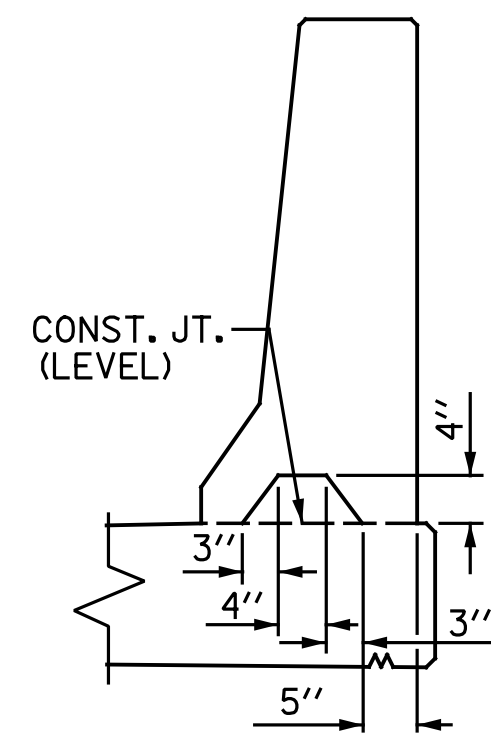
EPOXY COATED REINFORCING STEEL	LBS.	4,835
CLASS AA CONCRETE	C.Y.	27.6
CONCRETE BARRIER RAIL	L.F.	203.33

BILL OF MATERIAL

FOR CONCRETE BARRIER RAIL ONLY

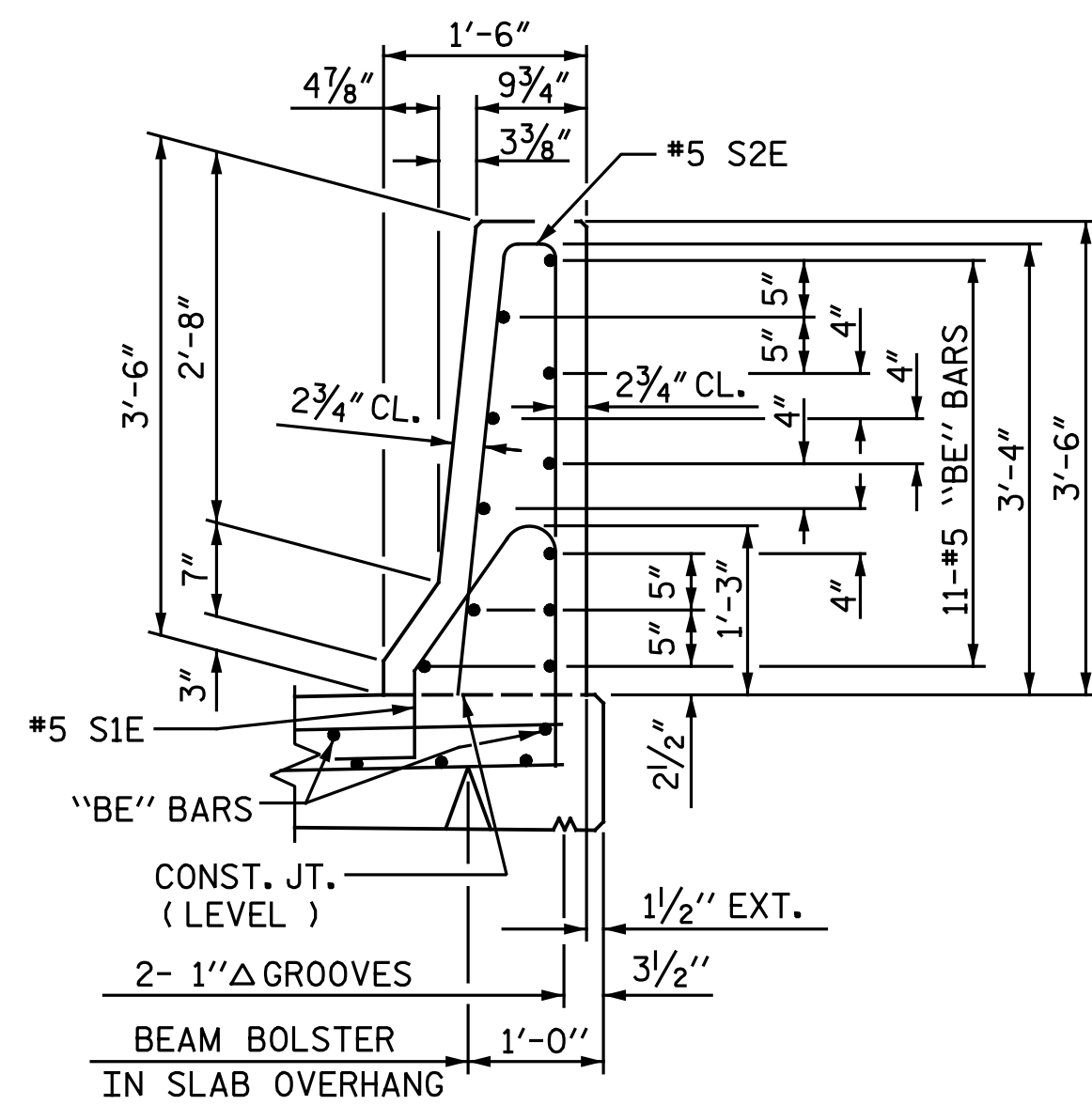
STAGE II					
BAR	NO.	SIZE	TYPE	LENGTH	WEIGHT
B1E	22	#5	STR	16'-4"	375
B2E	88	#5	STR	20'-10"	1912
S1E	210	#5	1	4'-8"	1022
S2E	206	#5	2	7'-0"	1504
S3E	4	#5	2	5'-4"	22

EPOXY COATED REINFORCING STEEL	LBS.	4,835
CLASS AA CONCRETE	C.Y.	27.6
CONCRETE BARRIER RAIL	L.F.	203.33

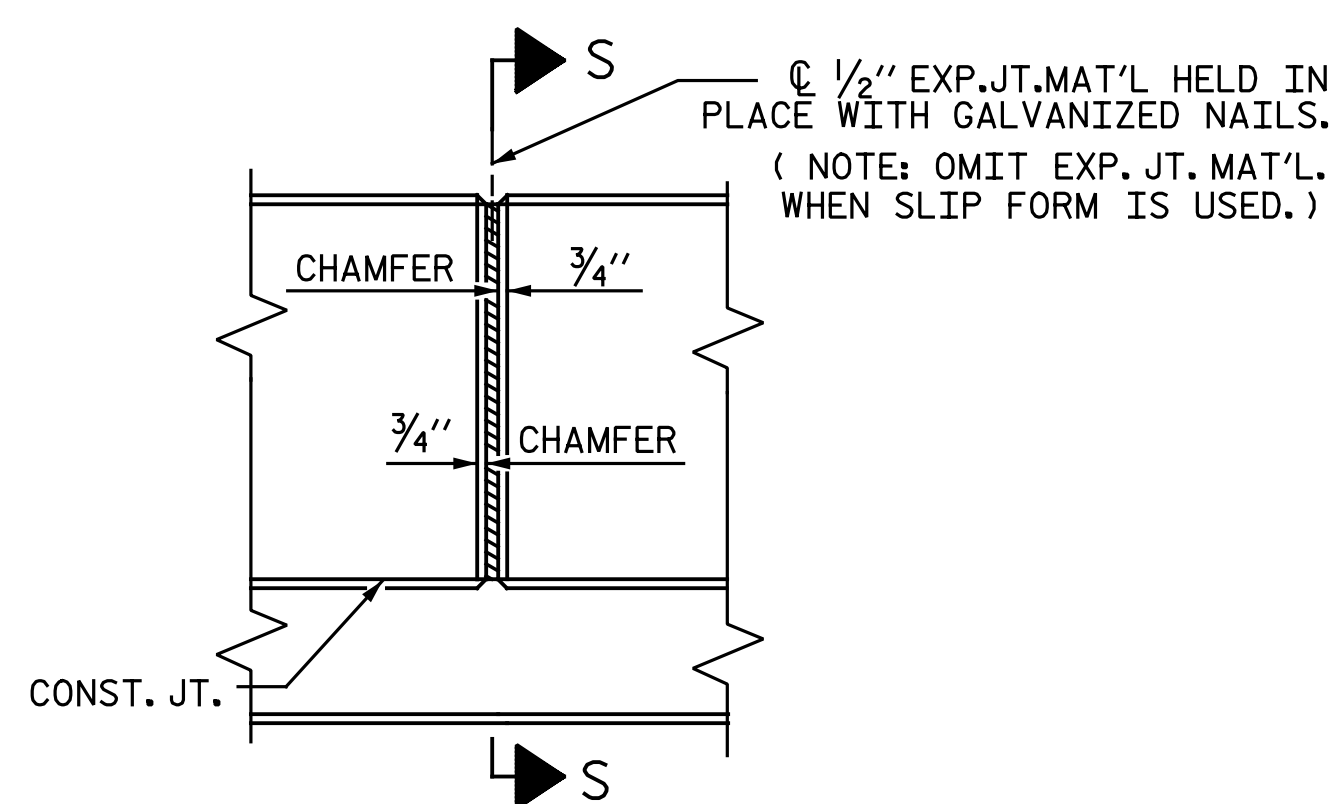


SECTION S-S

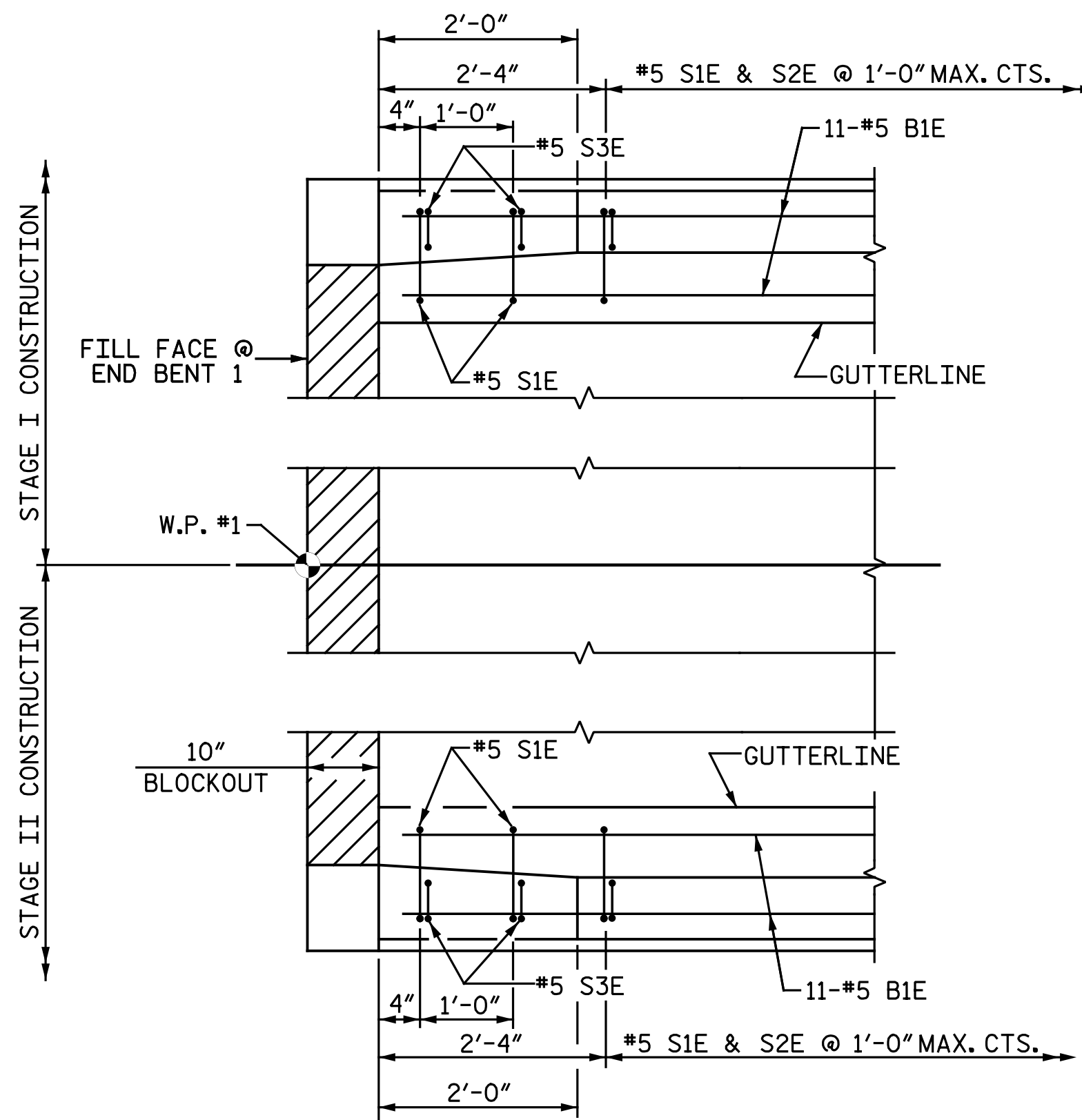
AT DAM IN OPEN JOINT (THIS IS TO BE USED ONLY WHEN SLIP FORM IS USED)



SECTION THRU RAIL

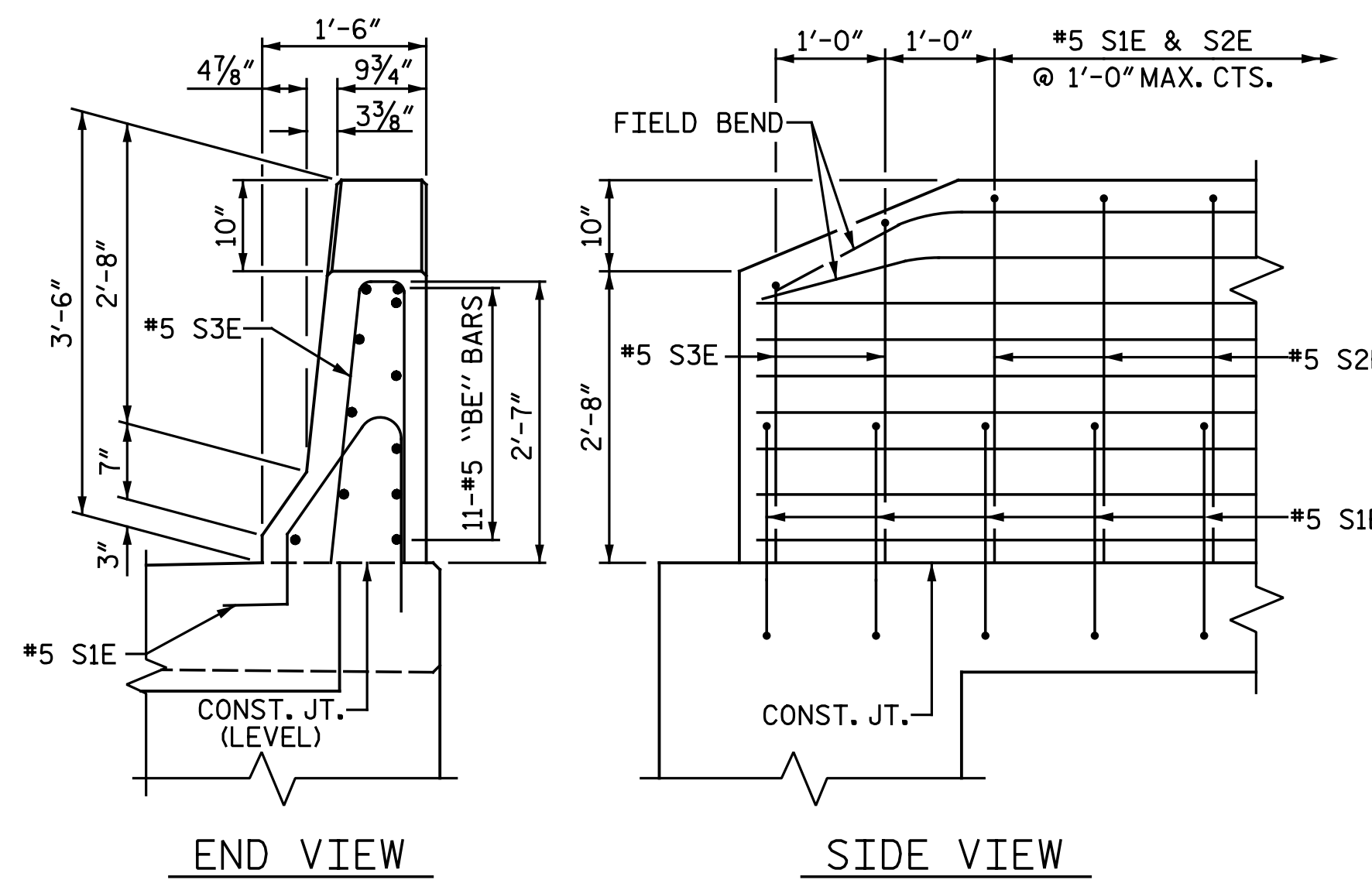


ELEVATION AT EXPANSION JOINTS BARRIER RAIL DETAILS



PLAN

(END OF RAIL @ END BENT 1 SHOWN, END BENT 2 SIMILAR)



END VIEW

SIDE VIEW

END OF RAIL DETAILS

DRAWN BY : N. B. SPEAKS DATE : 9-21-16
 CHECKED BY : A. H. SHARPE DATE : 9-22-16

PROJECT NO. U-3330
 NASH COUNTY
 STATION: 61+03.00 -L-

DOCUMENT NOT CONSIDERED FINAL UNLESS ALL SIGNATURES COMPLETED		STATE OF NORTH CAROLINA DEPARTMENT OF TRANSPORTATION RALEIGH CONCRETE BARRIER RAIL DETAILS																	
	DocuSigned by: 61EAF7523943466... 2/3/2017	Michael Baker Engineering 8000 Regency Parkway, Suite 600 Cary, North Carolina 27518 NC License No.: F-1084																	
	Michael Baker INTERNATIONAL	REVISIONS <table border="1"> <thead> <tr> <th>NO.</th> <th>BY:</th> <th>DATE:</th> <th>NO.</th> <th>BY:</th> <th>DATE:</th> </tr> </thead> <tbody> <tr> <td>1</td> <td></td> <td></td> <td>3</td> <td></td> <td></td> </tr> <tr> <td>2</td> <td></td> <td></td> <td>4</td> <td></td> <td></td> </tr> </tbody> </table>	NO.	BY:	DATE:	NO.	BY:	DATE:	1			3			2			4	
NO.	BY:	DATE:	NO.	BY:	DATE:														
1			3																
2			4																

SHEET NO. S3-20
 TOTAL SHEETS 42