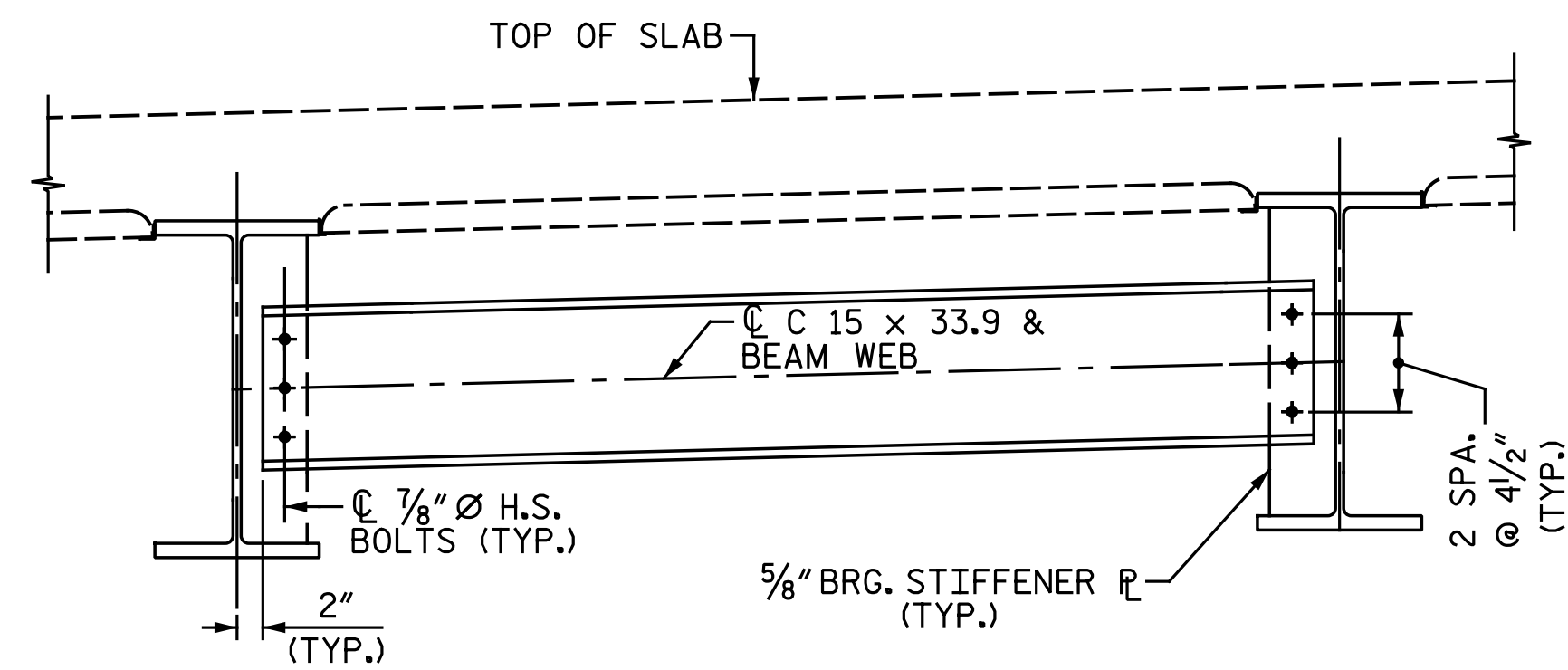
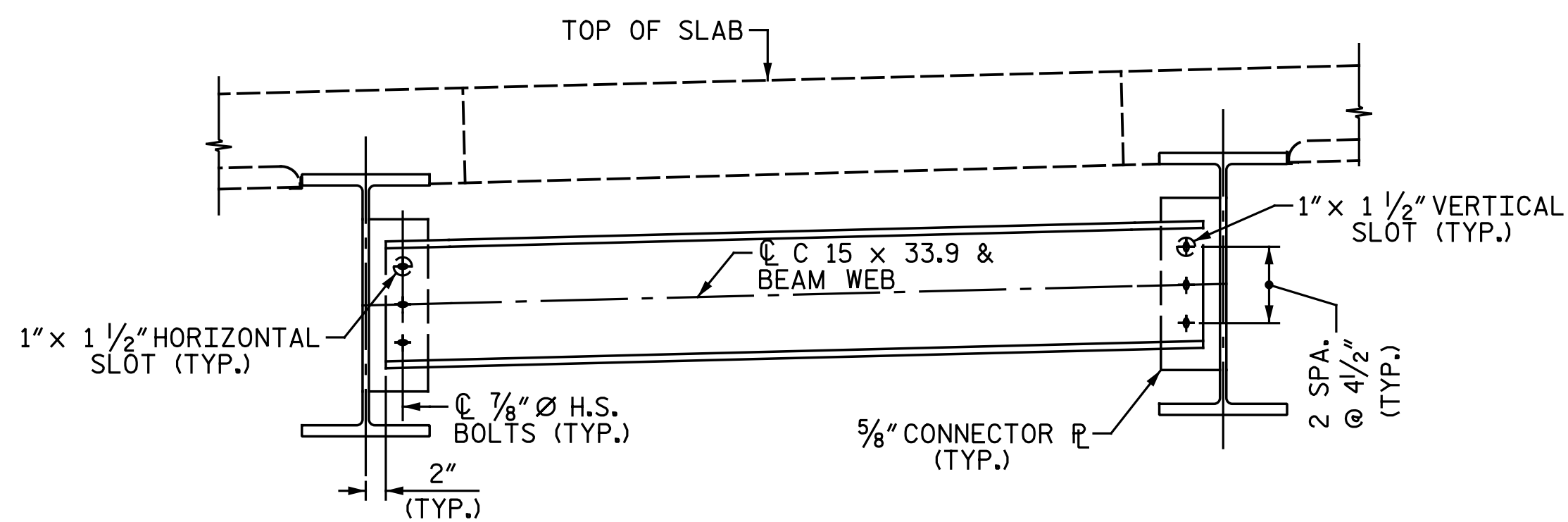


INTERMEDIATE DIAPHRAGM (D1)

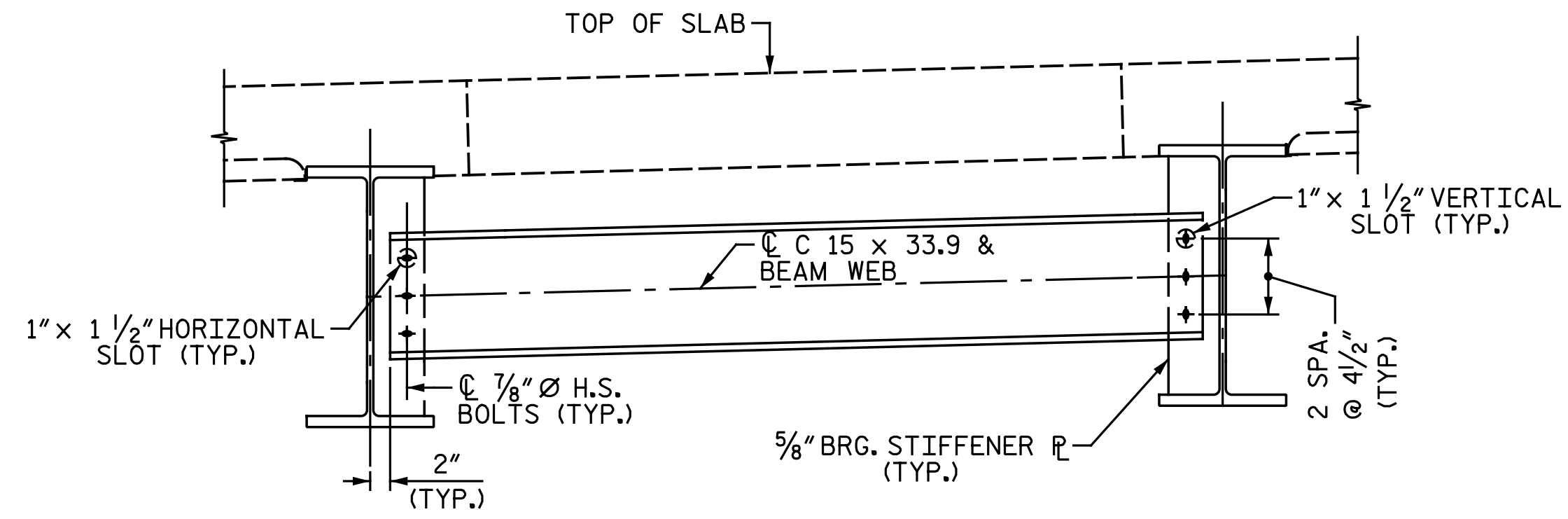


BENT DIAPHRAGM (D2)



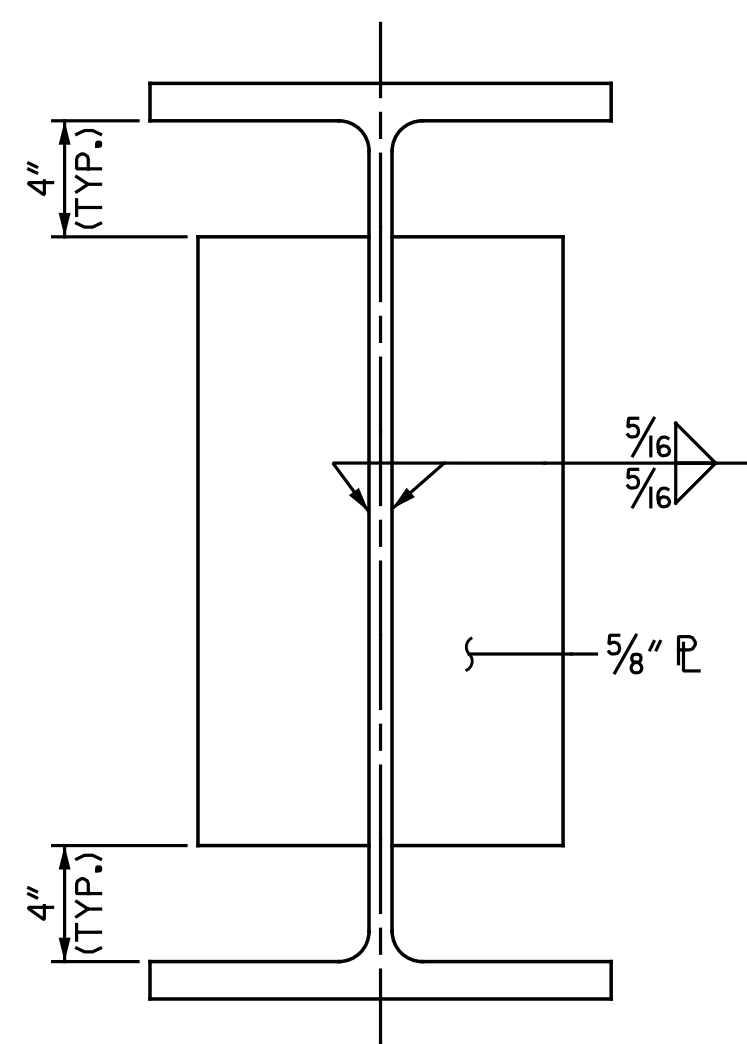
INTERMEDIATE DIAPHRAGM IN CLOSURE POUR BAY (D3)

NUTS ON BOLTS FOR CONNECTING DIAPHRAGM TO CONNECTOR PLATE SHALL BE LEFT LOOSE FOR PURPOSE OF ADJUSTMENT UNTIL BOTH SIDES OF SLAB HAVE BEEN POURED.

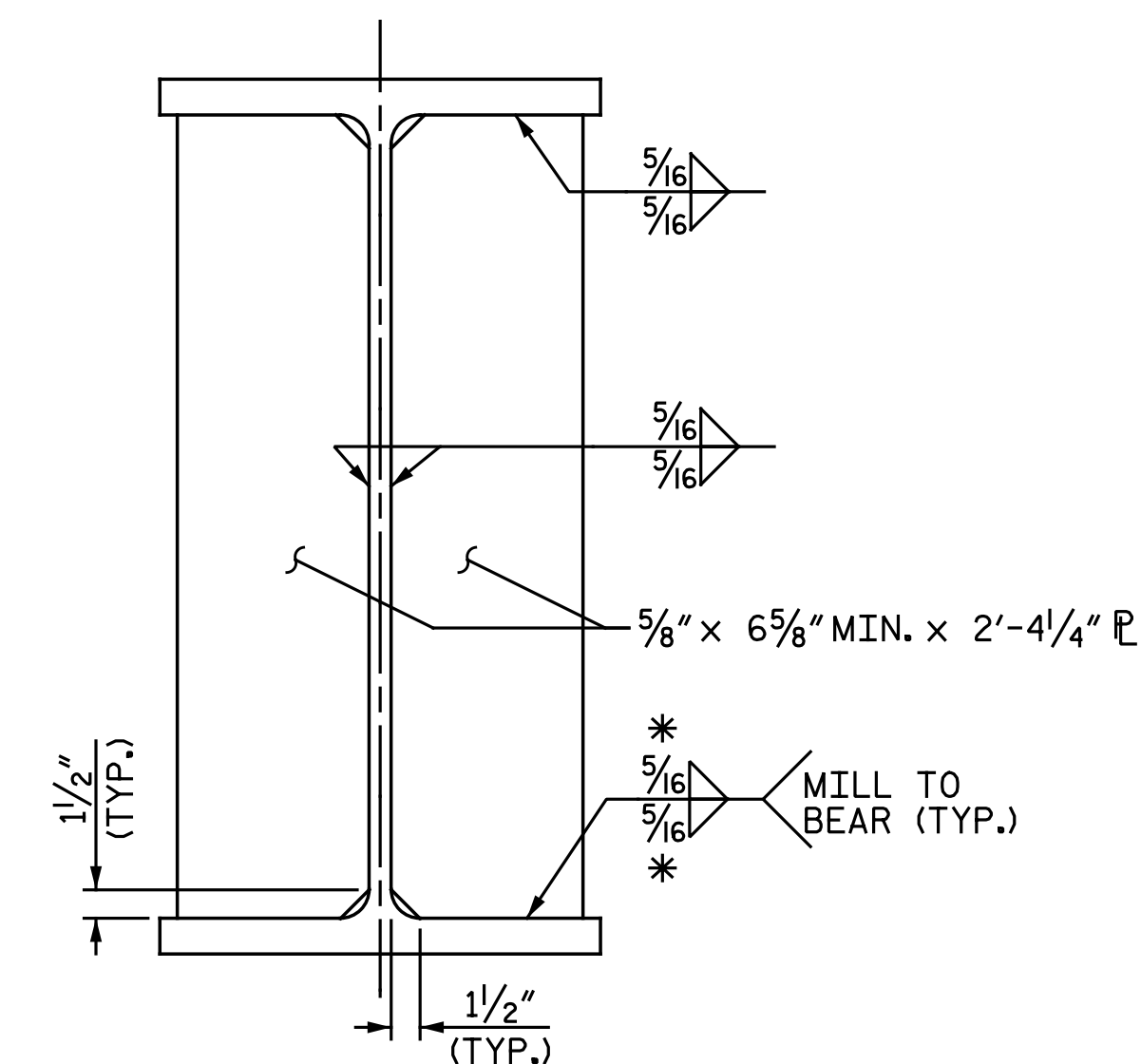


BENT DIAPHRAGM IN CLOSURE POUR BAY (D4)

NUTS ON BOLTS FOR CONNECTING DIAPHRAGM TO CONNECTOR PLATE SHALL BE LEFT LOOSE FOR PURPOSE OF ADJUSTMENT UNTIL BOTH SIDES OF SLAB HAVE BEEN POURED.



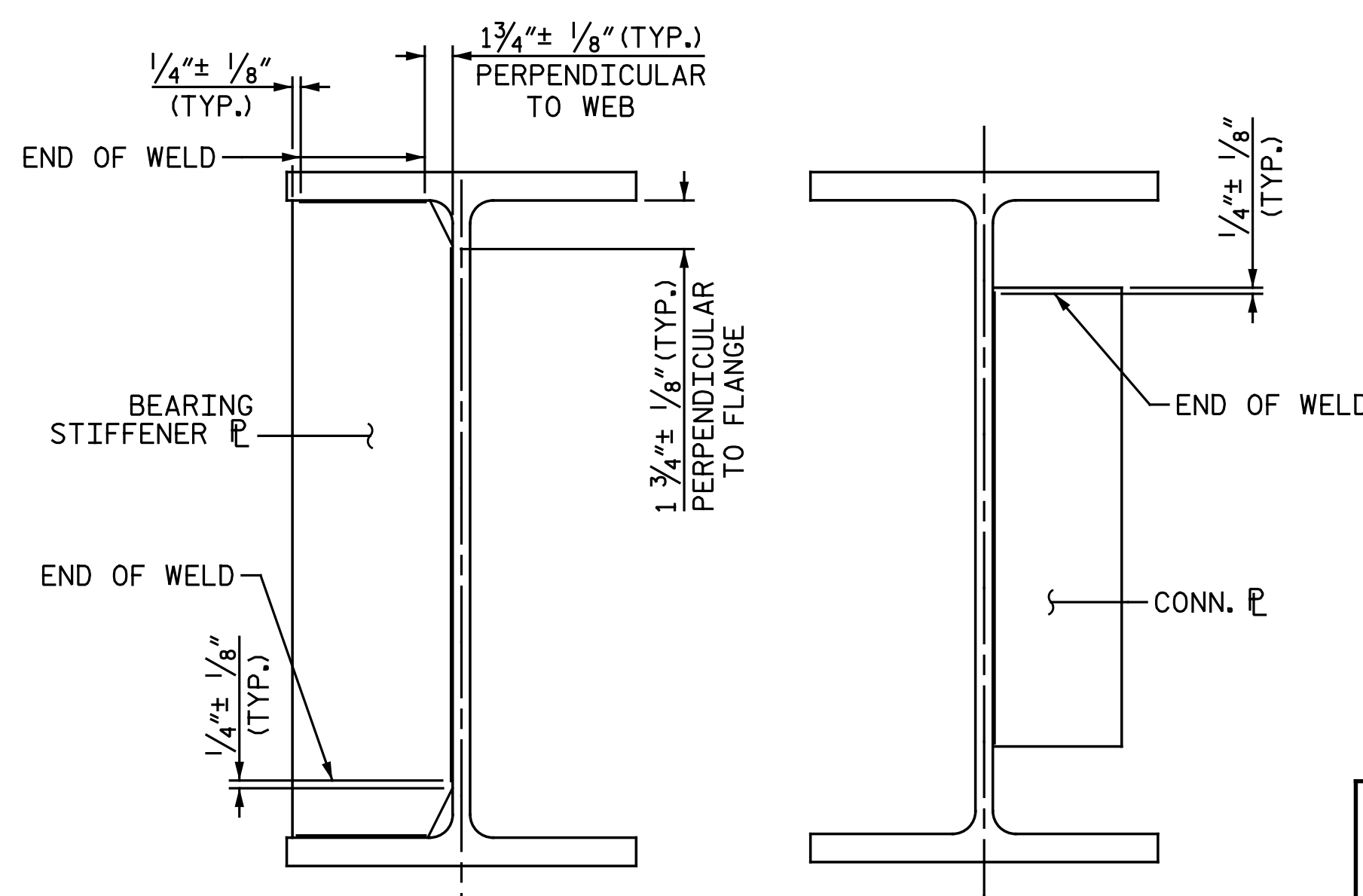
INTERMEDIATE DIAPHRAGM CONNECTOR PLATE



BEARING STIFFENER

BEARING STIFFENER MAY REQUIRE COPING IF WIDER THAN BOTTOM FLANGE.

\* AT BENT 1 AND BENT 2, WELD BEARING STIFFENER TO BOTTOM FLANGE IF USED AS A CONNECTOR PLATE.



STIFFENER AND CONNECTOR PLATE CONNECTIONS WELD TERMINATION DETAILS

PROJECT NO. U-3330  
 NASH COUNTY  
 STATION: 61+03.00 -L-  
 SHEET 2 OF 3

DRAWN BY : N. B. SPEAKS DATE : 10-10-16  
 CHECKED BY : J. M. GARRISON DATE : 10-12-16

|   |  |  |   |  |
|---|--|--|---|--|
| DOCUMENT NOT CONSIDERED FINAL UNLESS ALL SIGNATURES COMPLETED |  |  | STATE OF NORTH CAROLINA<br>DEPARTMENT OF TRANSPORTATION<br>RALEIGH<br>SUPERSTRUCTURE<br>STRUCTURAL STEEL<br>DETAILS |  |
|   | <b>Michael Baker International</b><br>Michael Baker Engineering<br>8000 Regency Parkway, Suite 600<br>Cary, North Carolina 27518<br>NC License No.: F-1084 |  |   |  |
|   | REVISIONS<br>NO. BY: DATE: NO. BY: DATE:   |  | SHEET NO.<br>S3-15<br>TOTAL SHEETS<br>42  |  |