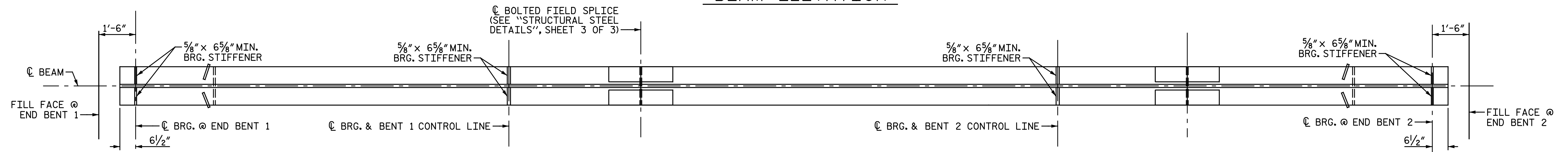
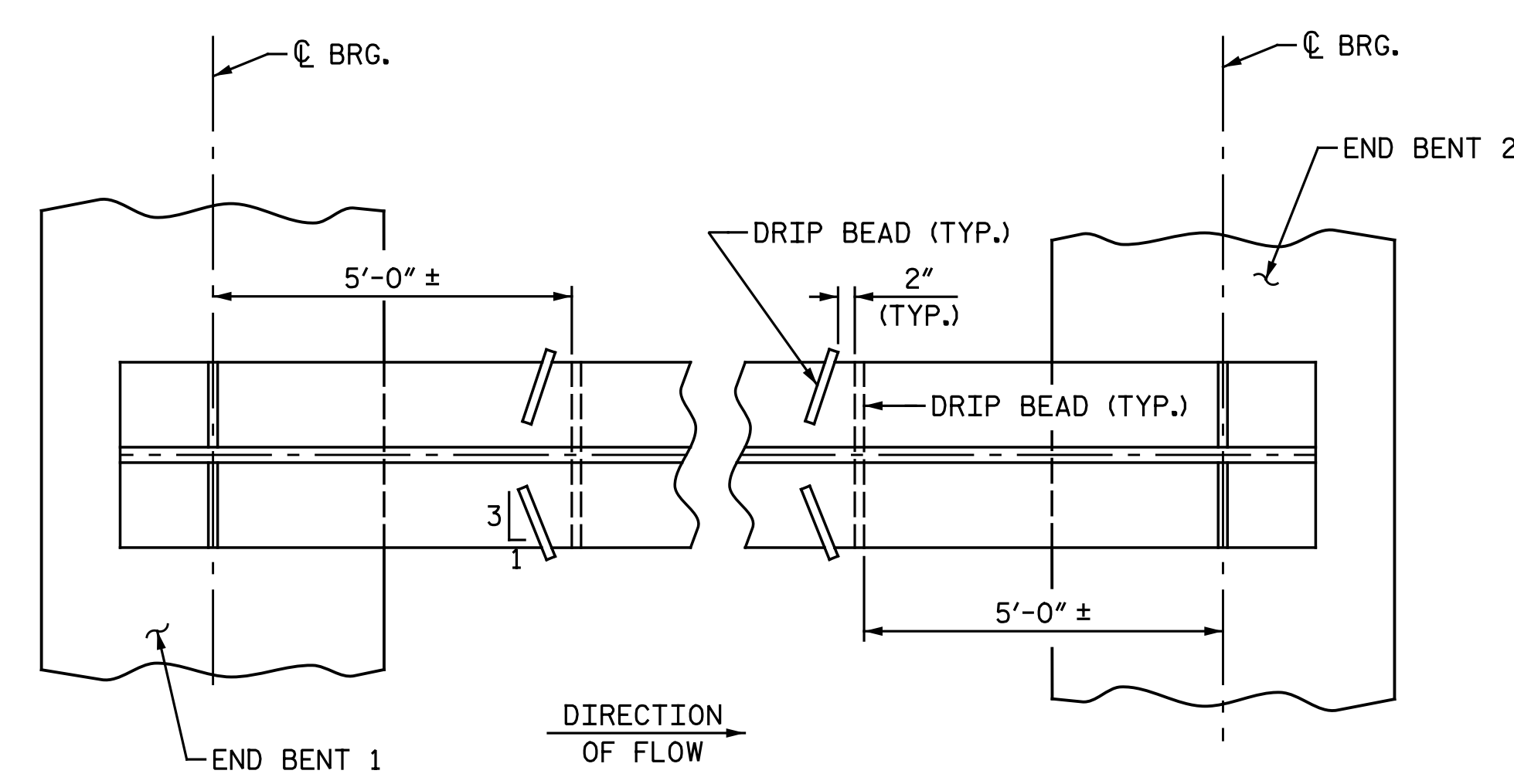


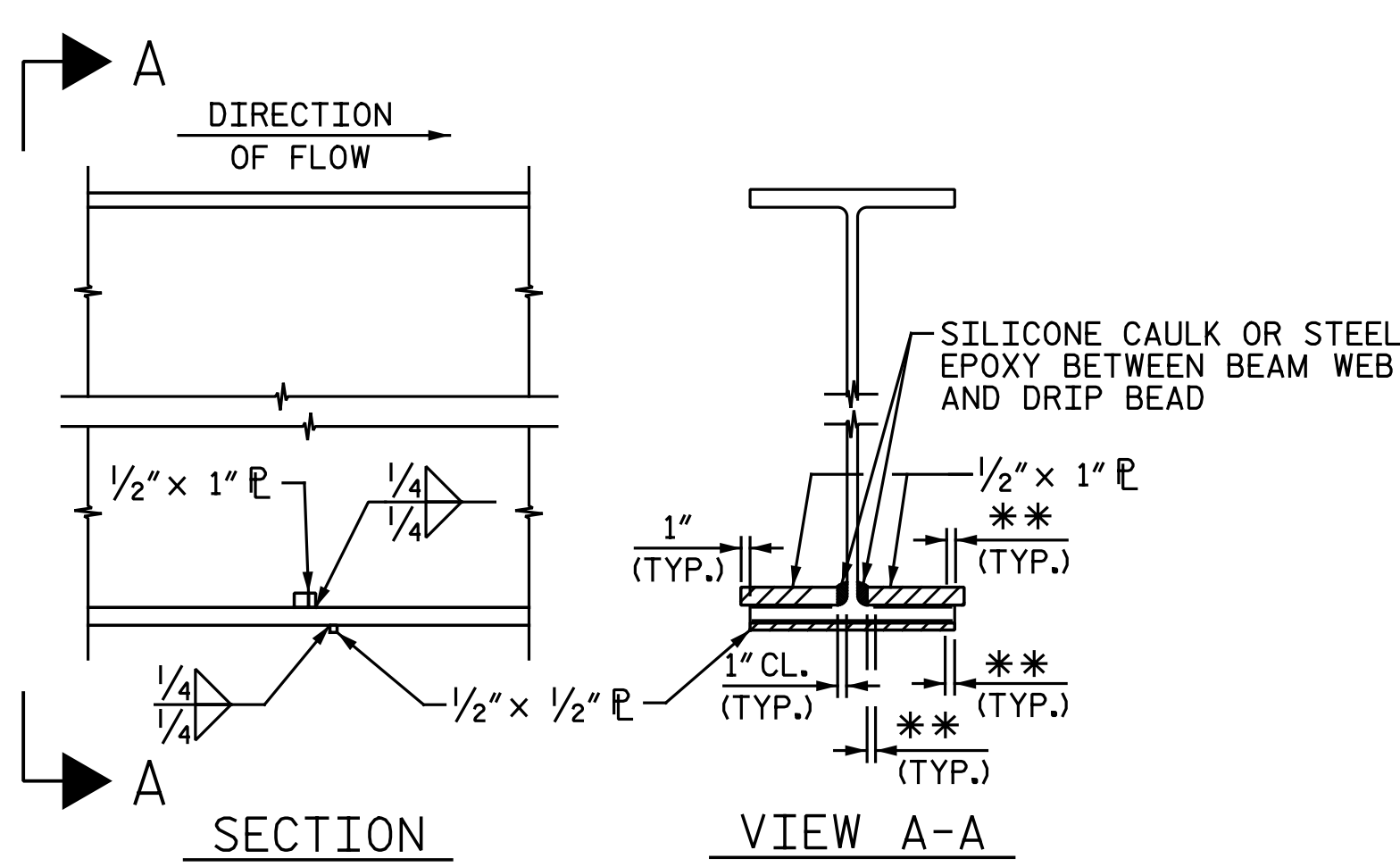
BEAM ELEVATION



BOTTOM FLANGE DETAILS



PART PLAN - BOTTOM FLANGE



SECTION

VIEW A-A

DRIP BEAD DETAILS

NOTES:

- ① CHARPY V-NOTCH TESTS ARE REQUIRED FOR ALL TOP OR BOTTOM FLANGES WHICH FALL WITHIN THESE LIMITS, ALL WEBS AND ALL SPLICE PLATES. FOR CHARPY V-NOTCH TESTS, SEE ARTICLE 1072-7 OF THE STANDARD SPECIFICATIONS.
 - ② NO WELDING OF FORMS OR FALSEWORK TO THE TOP FLANGE WILL BE PERMITTED IN THIS REGION.
- FOR SHEAR CONNECTOR TRANSVERSE SPACING, SEE "STRUCTURAL STEEL DETAILS", SHEET 3 OF 3.

PROJECT NO. U-3330
NASH COUNTY
 STATION: 61+03.00 -L-
 SHEET 1 OF 3

DRAWN BY : M. D. M. / N. B. S. DATE : 9-27-16
 CHECKED BY : J. M. GARRISON DATE : 10-12-16

** SEE "WELD TERMINATION DETAILS" ON "STRUCTURAL STEEL DETAILS", SHEET 2 OF 3.

DOCUMENT NOT CONSIDERED FINAL UNLESS ALL SIGNATURES COMPLETED		STATE OF NORTH CAROLINA DEPARTMENT OF TRANSPORTATION RALEIGH			
		SUPERSTRUCTURE			
		STRUCTURAL STEEL DETAILS			
		SHEET NO. S3-14			
REVISIONS					
NO.	BY:	DATE:	NO.	BY:	DATE:
1			3		
2			4		
			TOTAL SHEETS		42

Michael Baker International
 Michael Baker Engineering
 8000 Regency Parkway, Suite 600
 Cary, North Carolina 27518
 NC License No.: F-1084