

GENERAL NOTES

STRAIGHT EDGING WILL NOT BE REQUIRED UNLESS, IN THE OPINION OF THE ENGINEER, VISUAL INSPECTION INDICATES A NEED FOR IT.

MEASUREMENT AND PAYMENT SHALL BE AS PRESCRIBED IN SECTION 462 OF THE STANDARD SPECIFICATIONS.

FOR BERM WIDTH, SEE GENERAL DRAWING.

SLOPE PROTECTION SHALL CONSIST OF 4" POURED-IN-PLACE CONCRETE PAVING AS SHOWN IN THE DETAILS ON THIS SHEET.

CONCRETE SHALL BE CLASS "B".

THE CONCRETE SURFACE SHALL BE FLOATED WITH A WOODEN FLOAT AND FINISHED.

WELDED WIRE FABRIC REINFORCING SHALL BE 6 X 6 - W1.4 X W1.4, 60" WIDE.

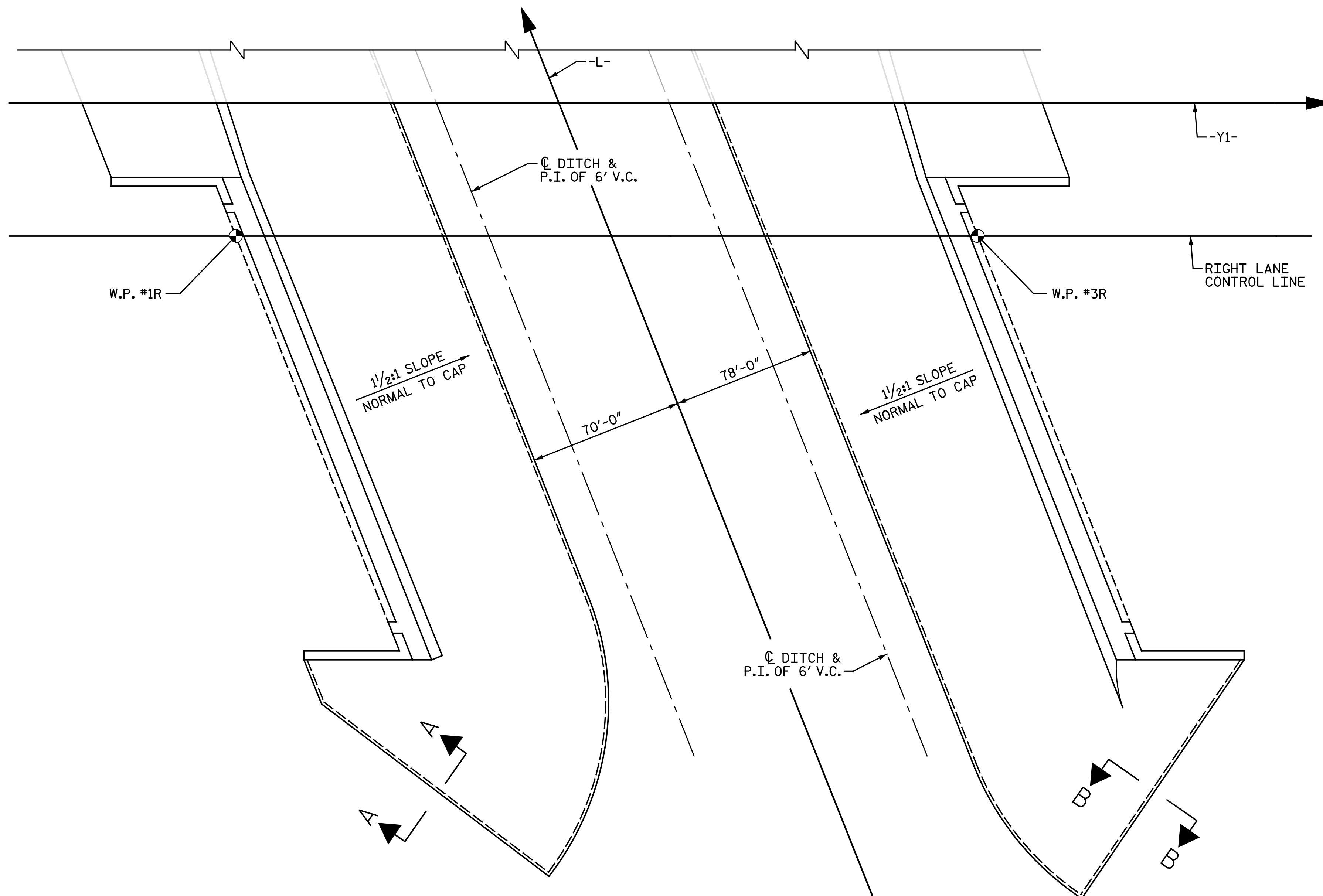
SLOPE PROTECTION SHALL BE POURED IN 5' STRIPS AS SHOWN IN THE "POURING DETAIL" WITH 2'-0" LONG #4 BARS PLACED ALONG THE SLOPE BETWEEN STRIPS AT 1'-6" MAXIMUM SPACING.

SLOPE PROTECTION MAY BE POURED IN ALTERNATE 4' AND 5' STRIPS AS SHOWN IN THE "OPTIONAL POURING DETAIL" WITH ADJACENT RUNS OF WELDED WIRE FABRIC LAPPING AT LEAST 6".

THE COST OF THE WELDED WIRE FABRIC AND #4 BARS, IF USED, SHALL BE INCLUDED IN THE CONTRACT UNIT PRICE BID PER SQUARE YARD FOR SLOPE PROTECTION.

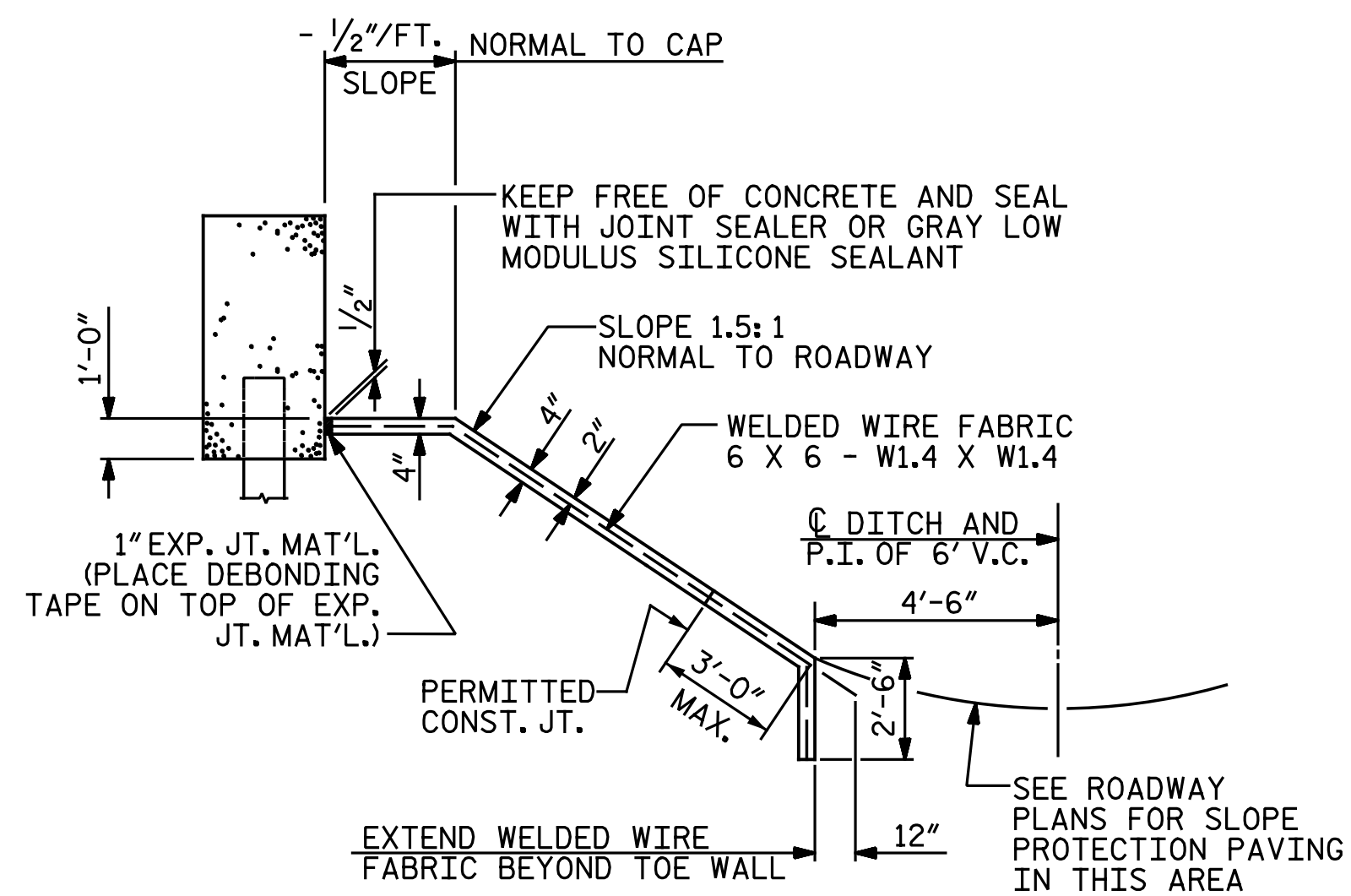
BRIDGE @ STA. 18+22.61 -Y1- (RIGHT LANE)	4 INCH SLOPE PROTECTION	* WELDED WIRE FABRIC 60 INCHES WIDE
	SQUARE YARDS	APPROX. L.F.
END BENT 1	276	552
END BENT 2	293	586

* QUANTITY SHOWN IS BASED ON 5' POURS.

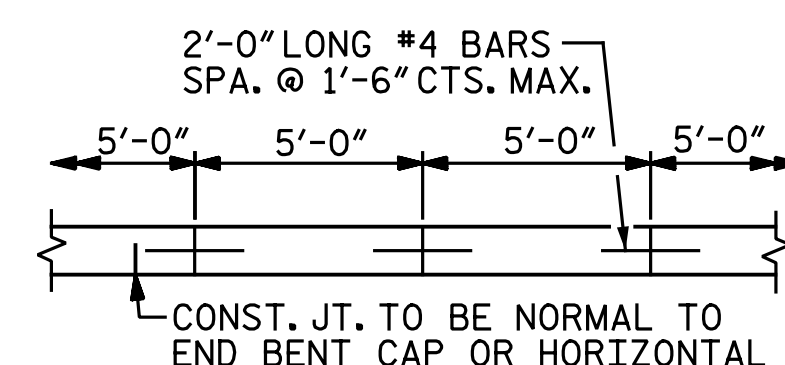


PLAN

FOR BERM WIDTHS AND ELEVATIONS
SEE GENERAL DRAWING AND "SLOPE
PROTECTION DETAILS" SHEET 2 OF 2.



SECTION ALONG C SURVEY WHEN FILL CATCHES IN DITCH

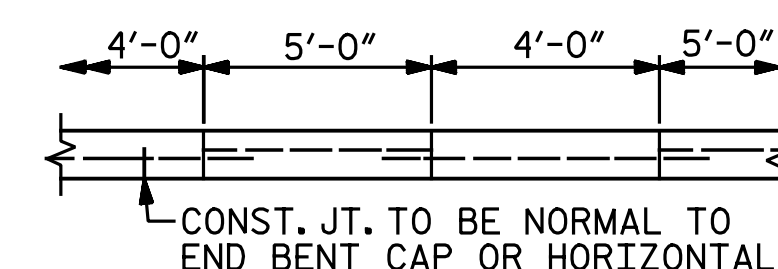


2'-0" LONG #4 BARS
SPA. @ 1'-6" CTS. MAX.

CONST. JT. TO BE NORMAL TO
END BENT CAP OR HORIZONTAL

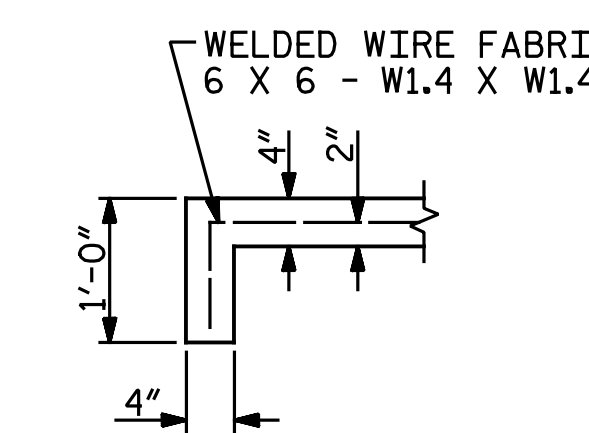
STRIP WIDTHS MAY VARY IN CURVED
PORTION.

POURING DETAIL

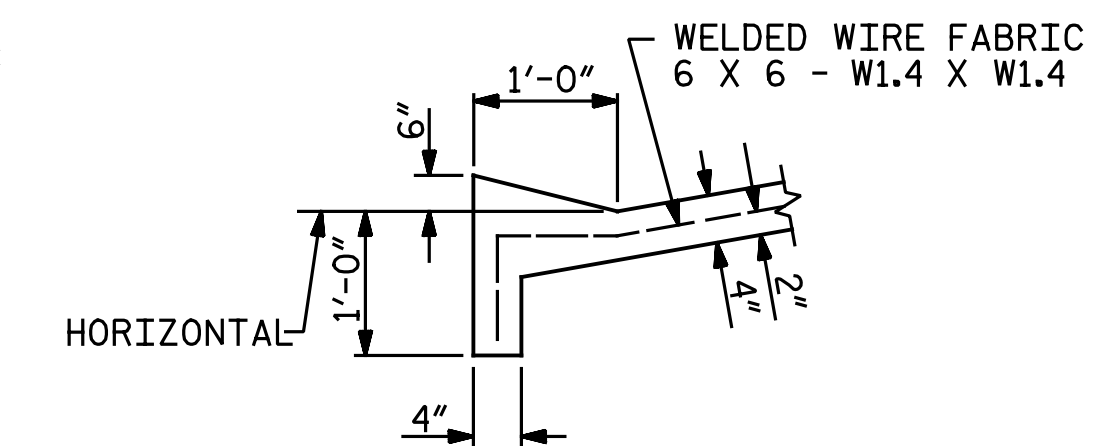


POUR A 4'-0" STRIP FIRST. STRIP
WIDTHS MAY VARY IN CURVED
PORTION.

OPTIONAL POURING DETAIL



SECTION A-A



SECTION B-B

PROJECT NO. U-3330
NASH COUNTY
STATION: 18+22.61 -Y1-

SHEET 1 OF 2

STATE OF NORTH CAROLINA
DEPARTMENT OF TRANSPORTATION
RALEIGH

SLOPE PROTECTION DETAILS

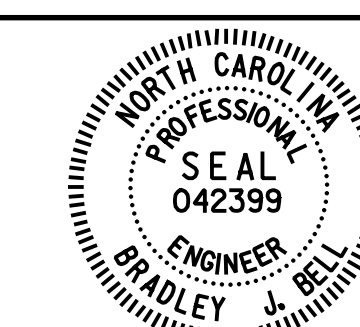
RIGHT LANES

REVISIONS

NO.	BY:	DATE:	NO.	BY:	DATE:
1			3		
2			4		

SHEET NO.
S2-36
TOTAL
SHEETS
39

DOCUMENT NOT CONSIDERED FINAL
UNLESS ALL SIGNATURES COMPLETED



DocuSigned by:
Bradley J. Bell
C41A3F8E3C3434
1/27/2017

Michael Baker
INTERNATIONAL

Michael Baker Engineering
8000 Regency Parkway, Suite 600
Cary, North Carolina 27518
NC License No.: F-1084

DRAWN BY: C. E. MAYHEW DATE: 8-31-16
CHECKED BY: J. M. GARRISON DATE: 9-7-16