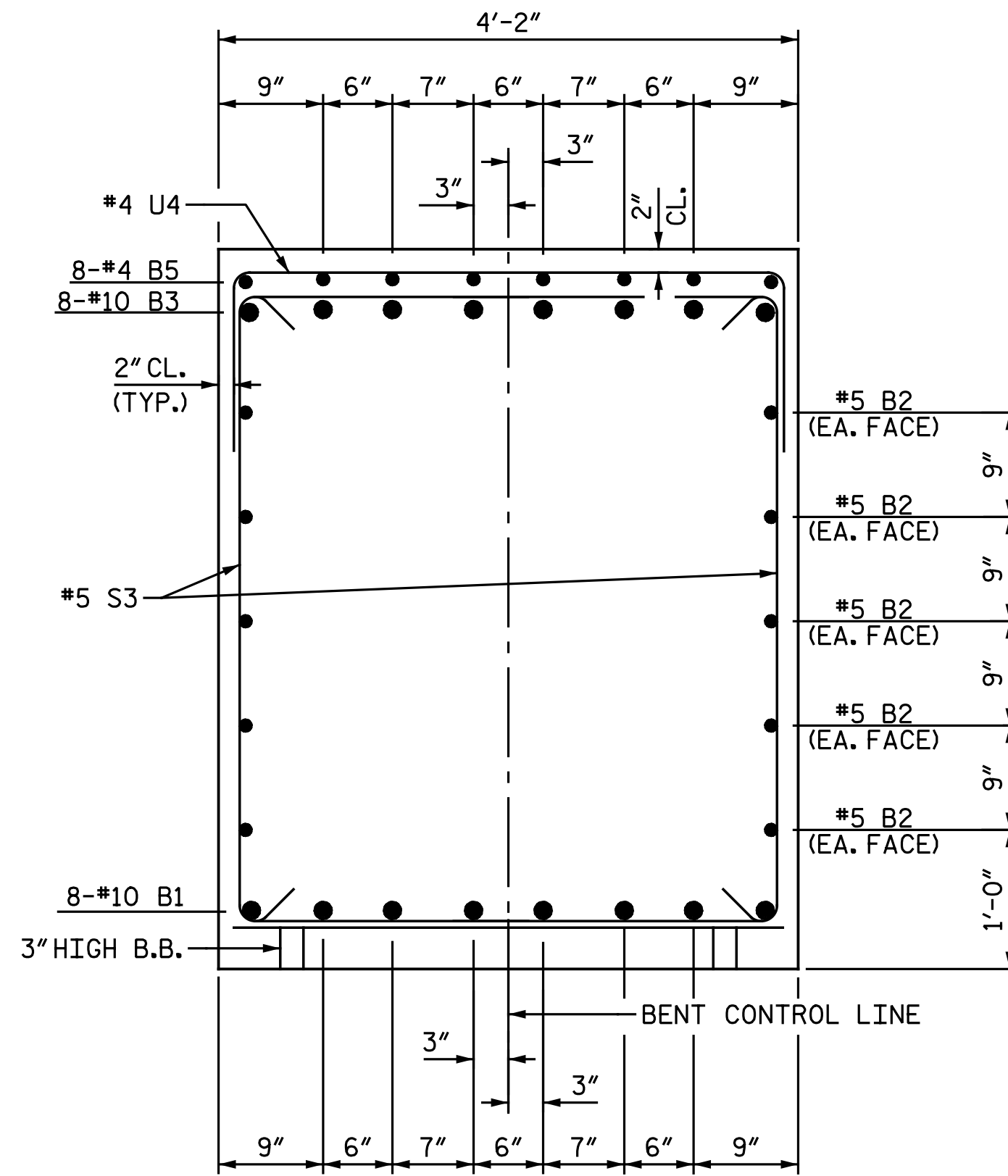
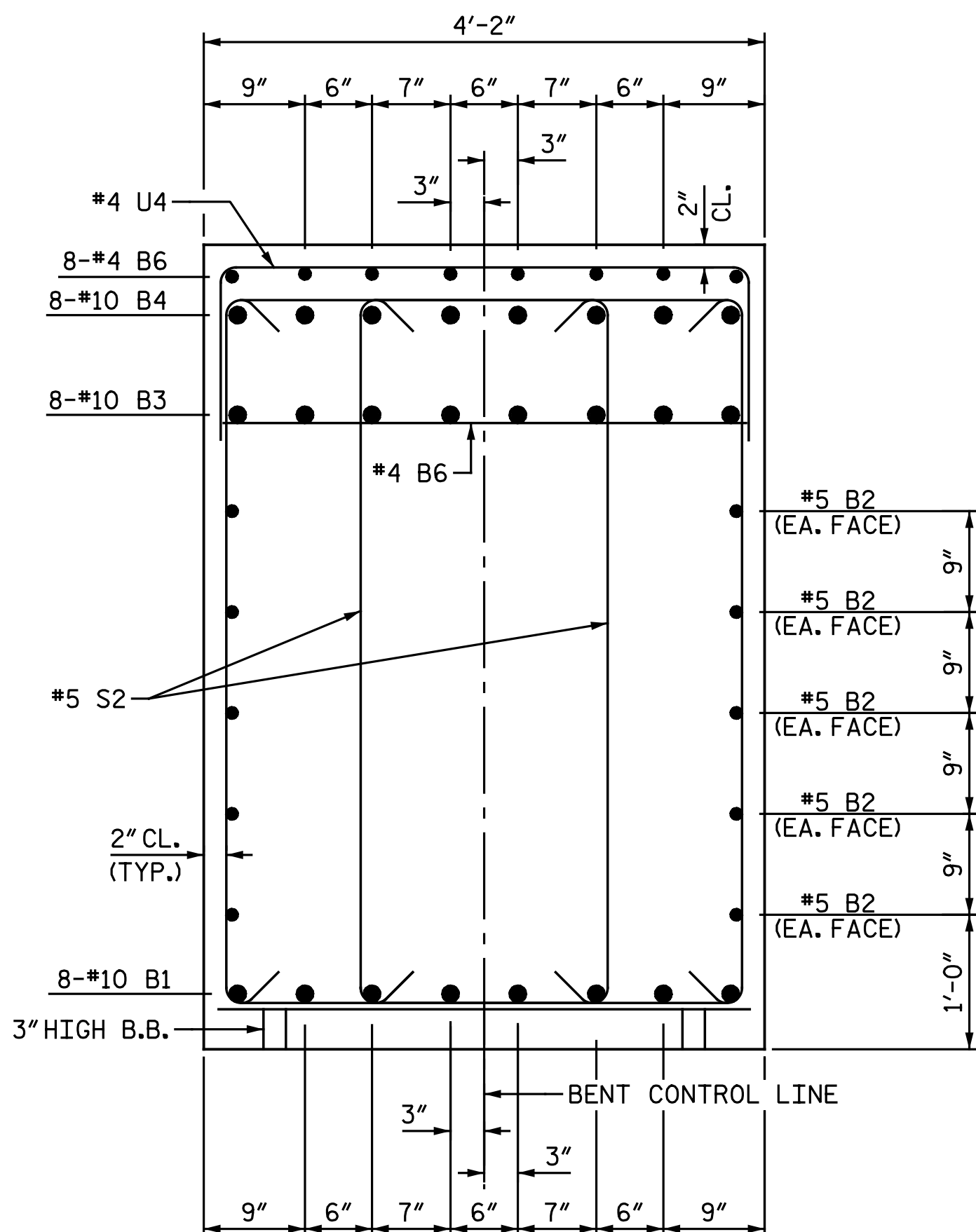


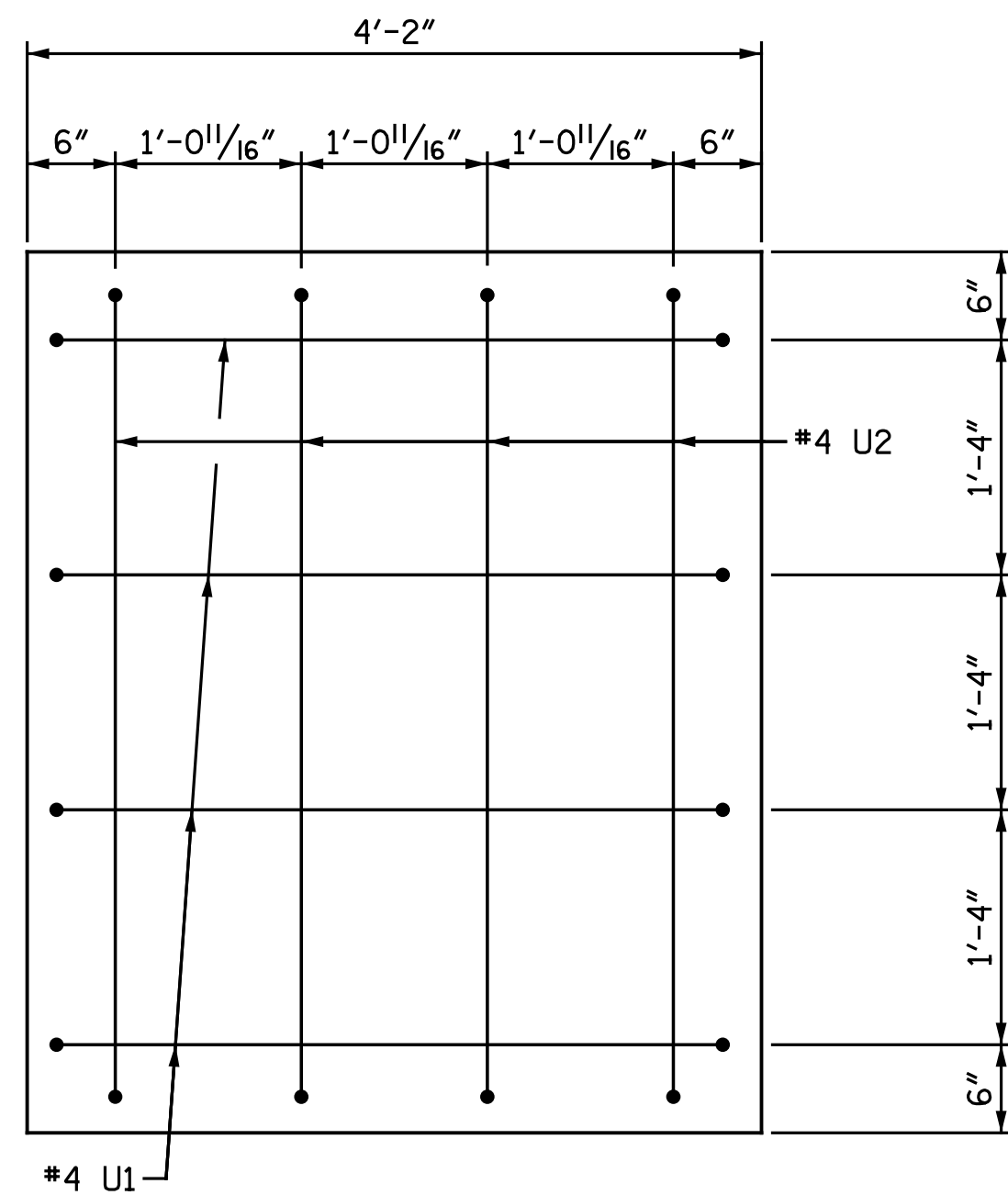
SECTION C-C
(INVERT ALTERNATE STIRRUP PAIRS)



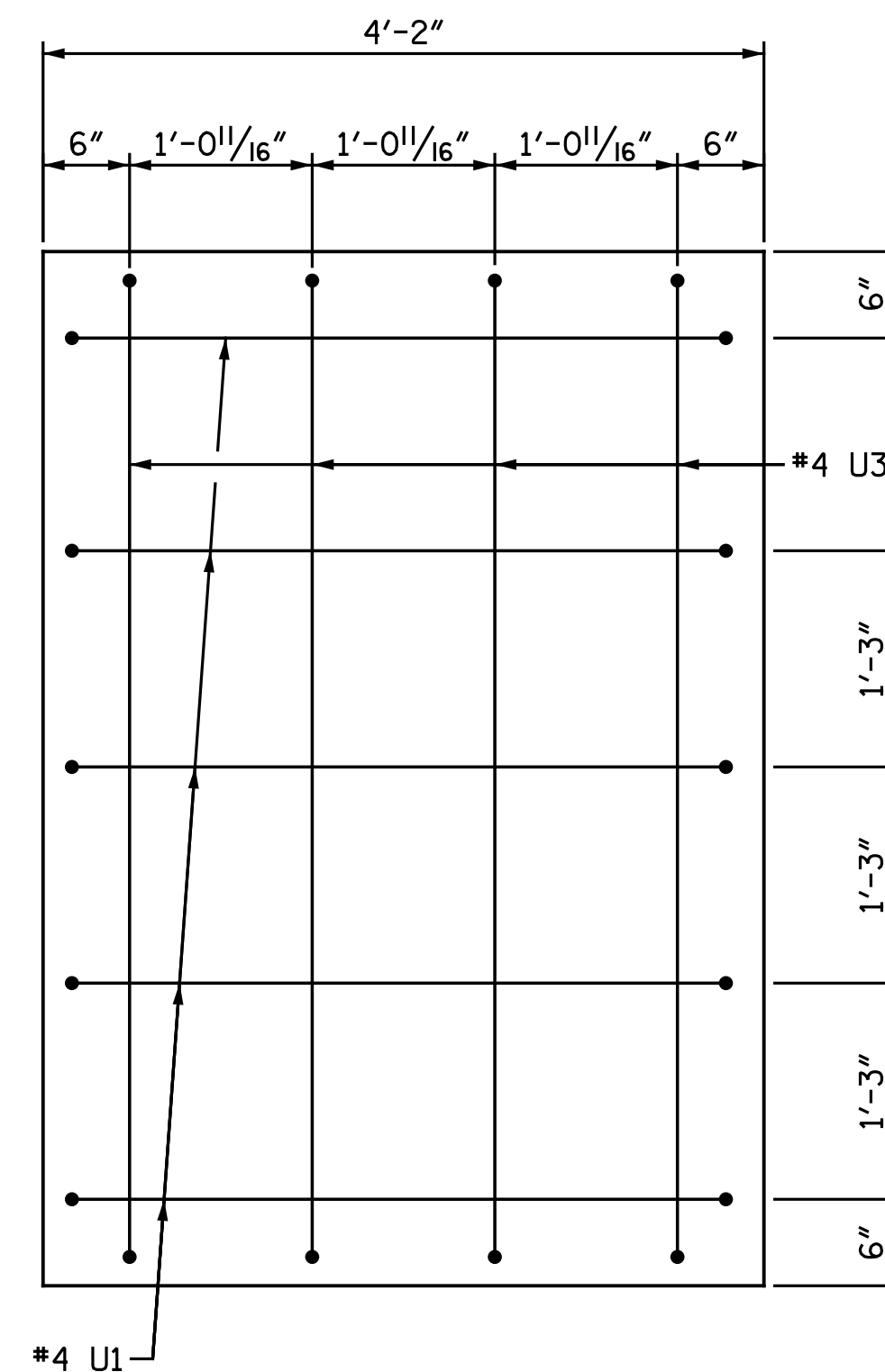
SECTION D-D
(INVERT ALTERNATE STIRRUPS)



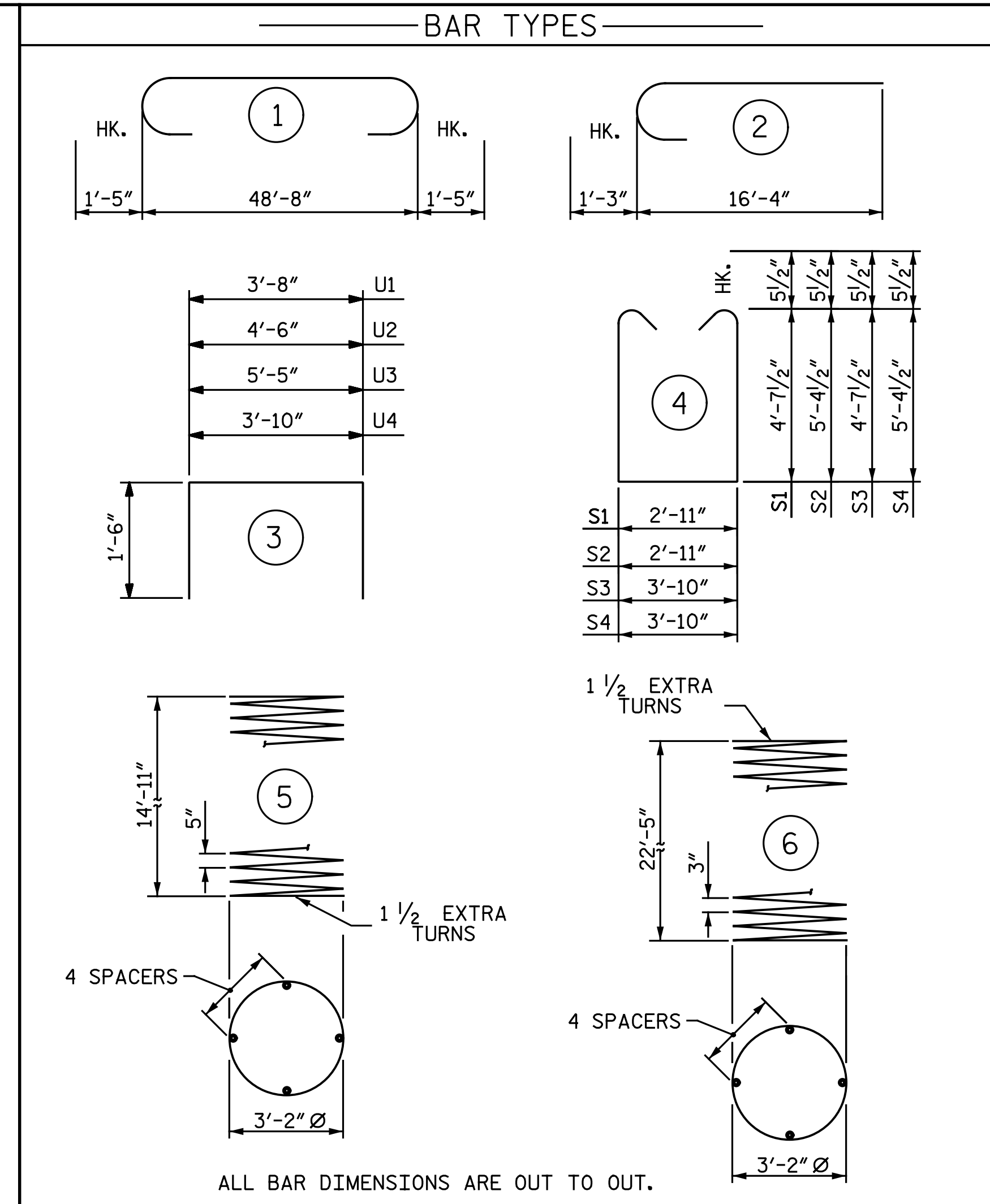
SECTION E-E
(INVERT ALTERNATE STIRRUP PAIRS)



VIEW F-F
ONLY END STIRRUPS SHOWN FOR CLARITY.



VIEW G-G
ONLY END STIRRUPS SHOWN FOR CLARITY.



ALL BAR DIMENSIONS ARE OUT TO OUT.

* THE SP-1 SPIRAL REINFORCING STEEL SHALL BE W31 OR D-31 COLD DRAWN WIRE OR #5 PLAIN OR DEFORMED BAR.
 ** THE SP-2 SPIRAL REINFORCING STEEL SHALL BE W20 OR D-20 COLD DRAWN WIRE OR #4 PLAIN OR DEFORMED BAR.

BILL OF MATERIAL

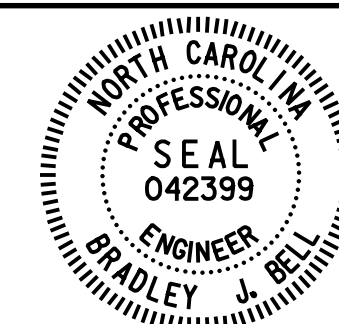
BENT 1					
BAR	NO.	SIZE	TYPE	LENGTH	WEIGHT
B1	8	#10	STR.	48' - 8"	1,675
B2	10	#5	STR.	48' - 8"	508
B3	8	#10	1	51' - 6"	1,773
B4	8	#10	STR.	15' - 0"	516
B5	16	#4	STR.	11' - 0"	118
B6	12	#4	STR.	3' - 10"	31
M1	11	#9	STR.	30' - 8"	1,147
S1	16	#5	4	13' - 1"	218
S2	16	#5	4	14' - 7"	243
S3	40	#5	4	14' - 0"	584
S4	14	#5	4	15' - 6"	226
U1	9	#4	3	6' - 8"	40
U2	4	#4	3	7' - 6"	20
U3	4	#4	3	8' - 5"	22
U4	52	#4	3	6' - 10"	237
V1	42	#9	2	17' - 7"	2,511
REINFORCING STEEL					LBS. 9,869
SP-1	3	*	5	540' - 9"	1,692
SP-2	3	**	6	600' - 1"	1,202
SPIRAL COLUMN REINFORCING STEEL					LBS. 2,894
CLASS A CONCRETE					
POUR 2 - COLUMNS				C.Y.	15.7
POUR 3 - CAP				C.Y.	41.0
TOTAL CLASS A CONCRETE					C.Y. 56.7
DRILLED PIER CONCRETE					
POUR 1 - DRILLED PIERS				C.Y.	32.0
4'-0" DIA. DRILLED PIERS IN SOIL				LIN. FT.	47
4'-0" DRILLED PIER NOT IN SOIL				LIN. FT.	22
SID INSPECTIONS				EACH	1
CSL TESTING				EACH	1
▲ CSL TUBES				LIN. FT.	292.6

▲ NO SEPARATE PAYMENT WILL BE MADE FOR CSL TUBES. CSL TUBES WILL BE INCLUDED IN THE UNIT BID PRICE FOR DRILLED PIERS.

PROJECT NO. U-3330
NASH COUNTY
 STATION: 18+22.61 -Y1-
 SHEET 2 OF 2

DRAWN BY: C. E. MAYHEW DATE: 8-23-16
 CHECKED BY: A. H. SHARPE DATE: 9-2-16

DOCUMENT NOT CONSIDERED FINAL UNLESS ALL SIGNATURES COMPLETED



DocuSigned by:
 Bradley J. Bell
 CA1AF8EC3A3434
 1/27/2017

Michael Baker INTERNATIONAL

Michael Baker Engineering
 8000 Regency Parkway, Suite 600
 Cary, North Carolina 27518
 NC License No.: F-1084

STATE OF NORTH CAROLINA DEPARTMENT OF TRANSPORTATION RALEIGH					
SUBSTRUCTURE					
BENT 1 DETAILS					
RIGHT LANES					
REVISIONS					
NO.	BY:	DATE:	NO.	BY:	DATE:
1			3		
2			4		

SHEET NO. S2-31			
TOTAL SHEETS 39			