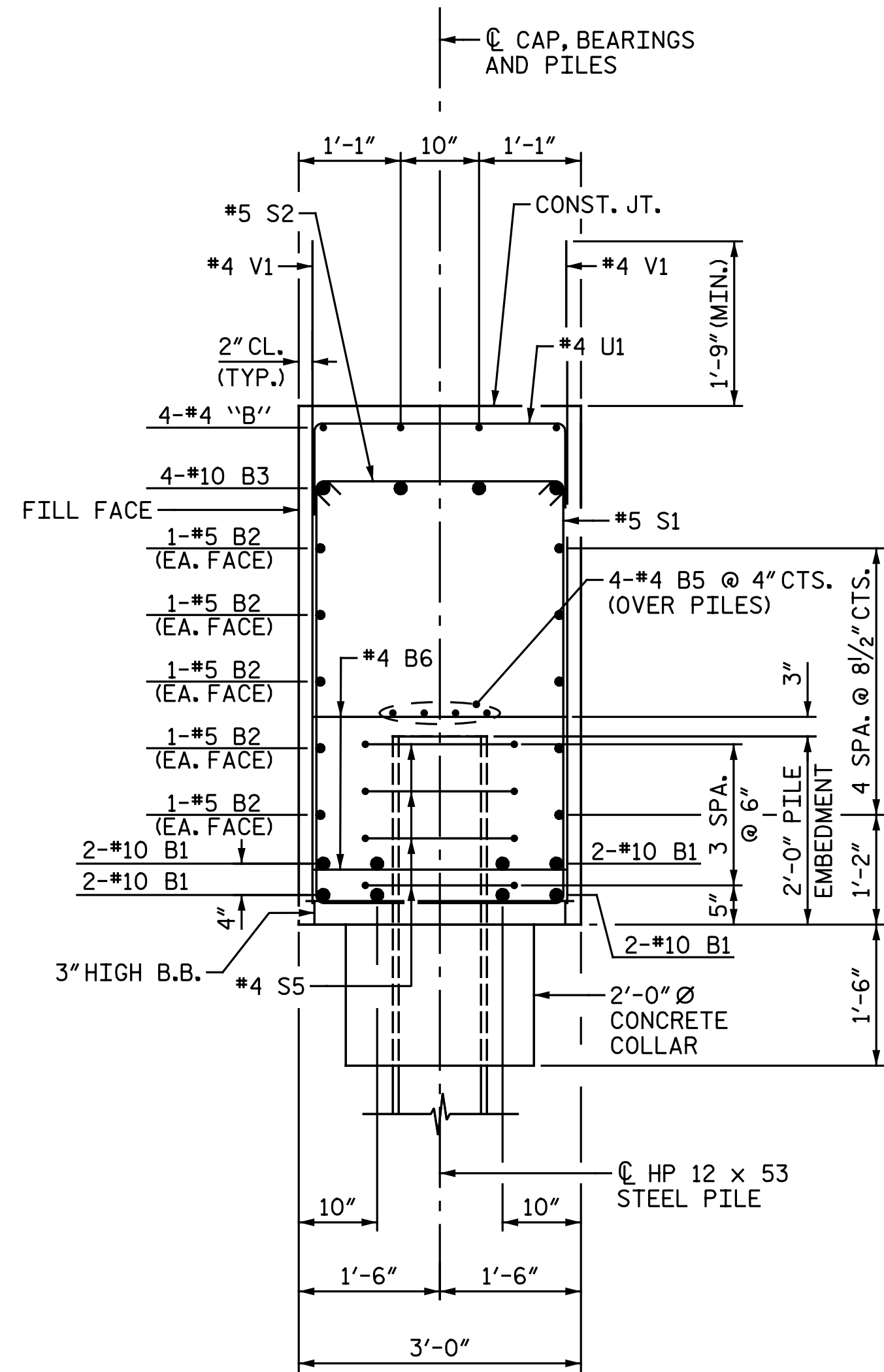
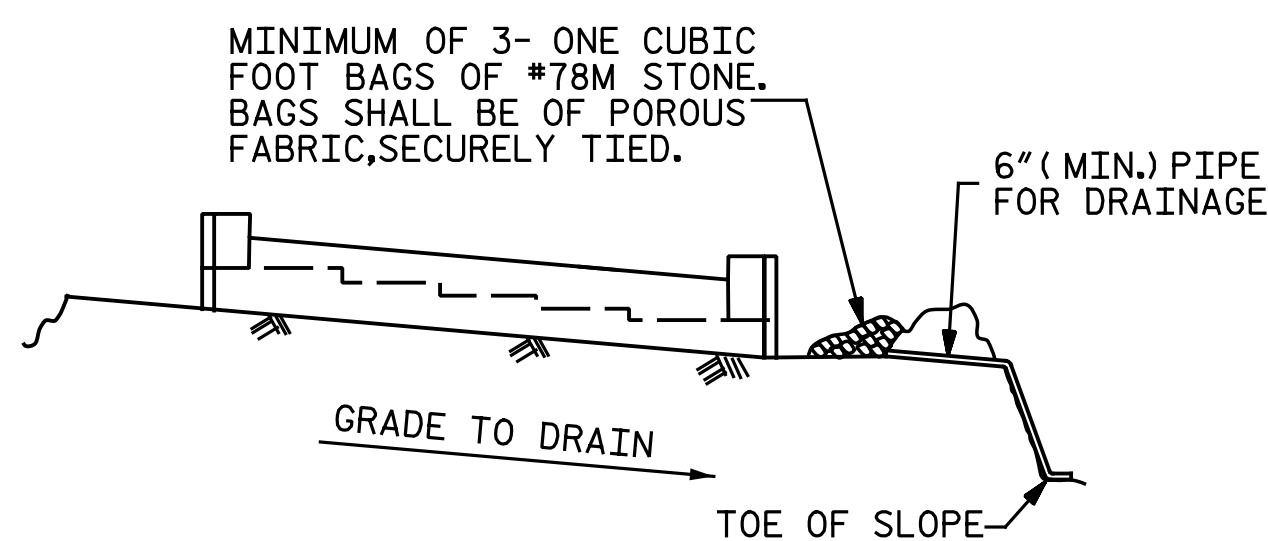


SECTION A-A



SECTION B-B



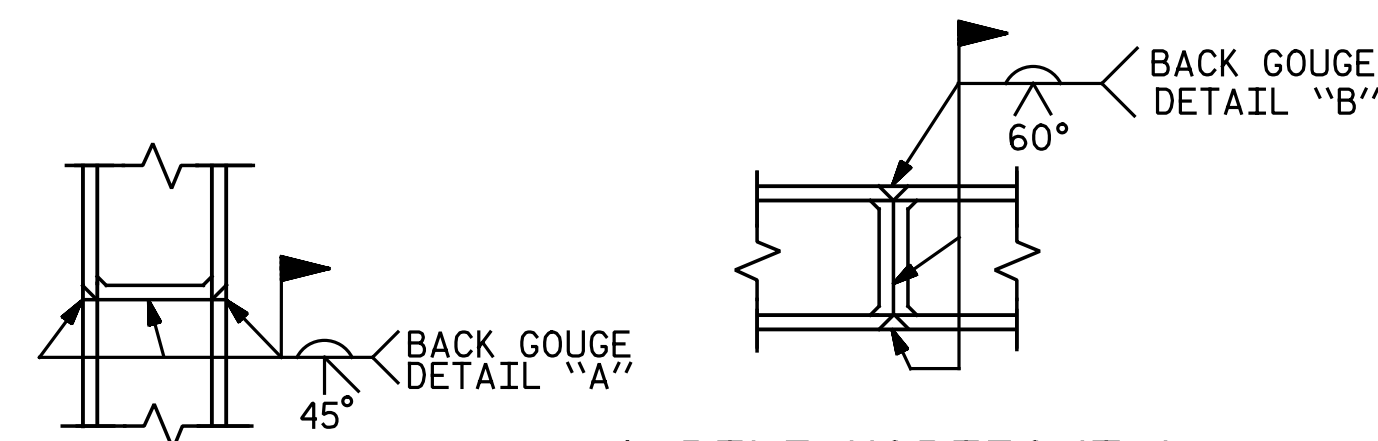
MINIMUM OF 3- ONE CUBIC FOOT BAGS OF #78M STONE. BAGS SHALL BE OF POROUS FABRIC, SECURELY TIED.

BAGGED STONE SHALL REMAIN IN PLACE UNTIL THE ENGINEER DIRECTS THAT IT BE REMOVED. THE CONTRACTOR SHALL REMOVE AND DISPOSE OF SILT ACCUMULATIONS AT BAGGED STONE WHEN SO DIRECTED BY THE ENGINEER. BAGS SHALL BE REMOVED AND REPLACED WHENEVER THE ENGINEER DETERMINES THAT THEY HAVE DETERIORATED AND LOST THEIR EFFECTIVENESS.

NO SEPARATE PAYMENT WILL BE MADE FOR THIS WORK AND THE ENTIRE COST OF THIS WORK SHALL BE INCLUDED IN THE UNIT CONTRACT PRICE BID FOR THE SEVERAL PAY ITEMS.

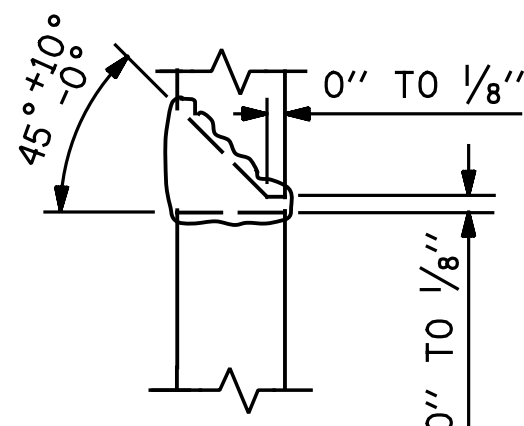
TEMPORARY DRAINAGE AT END BENT

DRAWN BY : M. D. MAYHEW DATE : 8-16-16
 CHECKED BY : A. H. SHARPE DATE : 8-18-16

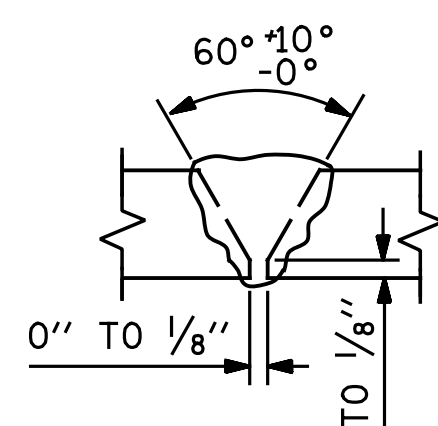


* PILE VERTICAL

* PILE HORIZONTAL OR VERTICAL



DETAIL "A"

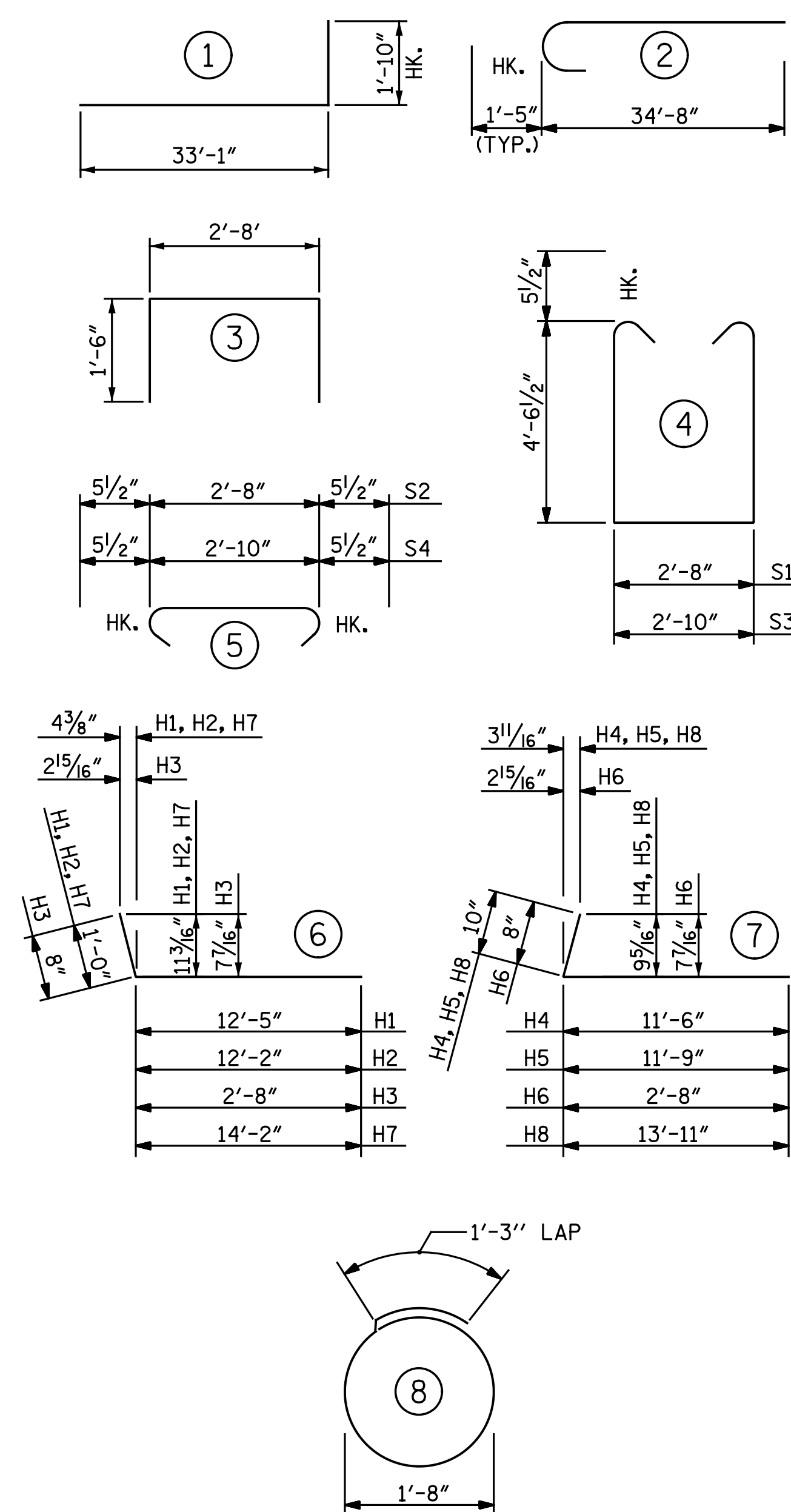


DETAIL "B"

PILE SPLICE DETAILS

* POSITION OF PILE DURING WELDING.

BAR TYPES



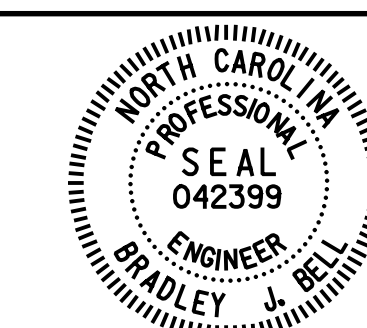
ALL BAR DIMENSIONS ARE OUT TO OUT.

BILL OF MATERIAL

END BENT 1					
BAR	NO.	SIZE	TYPE	LENGTH	WEIGHT
B1	16	#10	1	34' - 11"	2404
B2	10	#5	STR.	58' - 1"	606
B3	8	#10	2	36' - 1"	1242
B4	8	#4	STR.	10' - 11"	58
B5	8	#4	STR.	30' - 4"	162
B6	30	#4	STR.	2' - 8"	53
B7	1	#4	STR.	7' - 4"	5
B8	1	#4	STR.	7' - 8"	5
B9	1	#4	STR.	8' - 0"	5
B10	1	#4	STR.	8' - 4"	6
H1	22	#6	6	13' - 5"	443
H2	11	#6	6	13' - 2"	218
H3	22	#4	6	3' - 4"	49
H4	22	#5	7	12' - 4"	283
H5	12	#5	7	12' - 7"	157
H6	24	#4	7	3' - 4"	53
H7	11	#6	6	15' - 2"	251
H8	10	#5	7	14' - 9"	154
S1	55	#5	4	12' - 8"	727
S2	55	#5	5	3' - 7"	206
S3	2	#5	4	12' - 10"	27
S4	2	#5	5	3' - 9"	8
S5	32	#4	8	6' - 6"	139
U1	21	#4	3	5' - 8"	79
V1	92	#4	STR.	7' - 8"	471
V2	14	#5	STR.	10' - 3"	150
V3	4	#5	STR.	10' - 2"	42
V4	4	#5	STR.	10' - 1"	42
V5	22	#5	STR.	10' - 0"	229
V6	10	#5	STR.	9' - 11"	103
V7	10	#5	STR.	9' - 10"	103
V8	2	#5	STR.	9' - 9"	20
V9	2	#5	STR.	5' - 1"	11
V10	2	#5	STR.	4' - 5"	9
REINFORCING STEEL					LBS. 8,520
CLASS A CONCRETE					
POUR 1 -					
CAP, LOWER PART OF WINGS & COLLARS					C.Y. 39.4
POUR 2 -					
UPPER PART OF WINGS					C.Y. 5.7
TOTAL					C.Y. 45.1
HP 12 x 53 STEEL PILES					L.F. 240
NO. 8					
PILE DRIVING EQUIPMENT					EA. 8
SETUP FOR HP 12 x 53 STEEL PILES					

PROJECT NO. U-3330
 NASH COUNTY
 STATION: 18+22.61 -Y1-

DOCUMENT NOT CONSIDERED FINAL UNLESS ALL SIGNATURES COMPLETED



DocuSigned by:
 Bradley J. Bell
 CA1A5F8E3C3A34
 2/15/2017

Michael Baker INTERNATIONAL

Michael Baker Engineering
 8000 Regency Parkway, Suite 600
 Cary, North Carolina 27518
 NC License No.: F-1084

STATE OF NORTH CAROLINA
 DEPARTMENT OF TRANSPORTATION
 RALEIGH
 SUBSTRUCTURE
 INTEGRAL END BENT 1
 DETAILS
 RIGHT LANES

REVISIONS

NO.	BY:	DATE:	NO.	BY:	DATE:
1			3		
2			4		

SHEET NO. S2-28
 TOTAL SHEETS 39