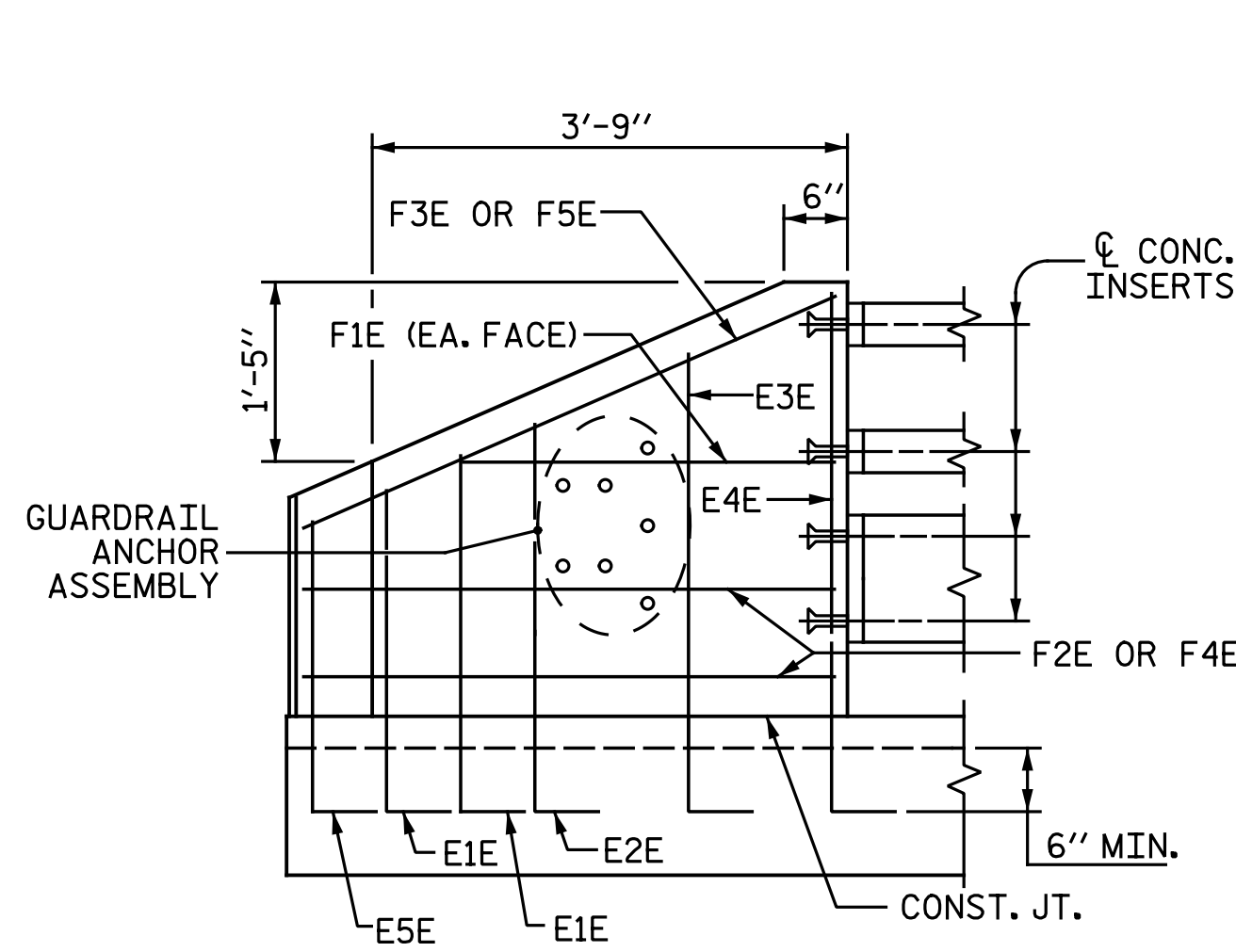
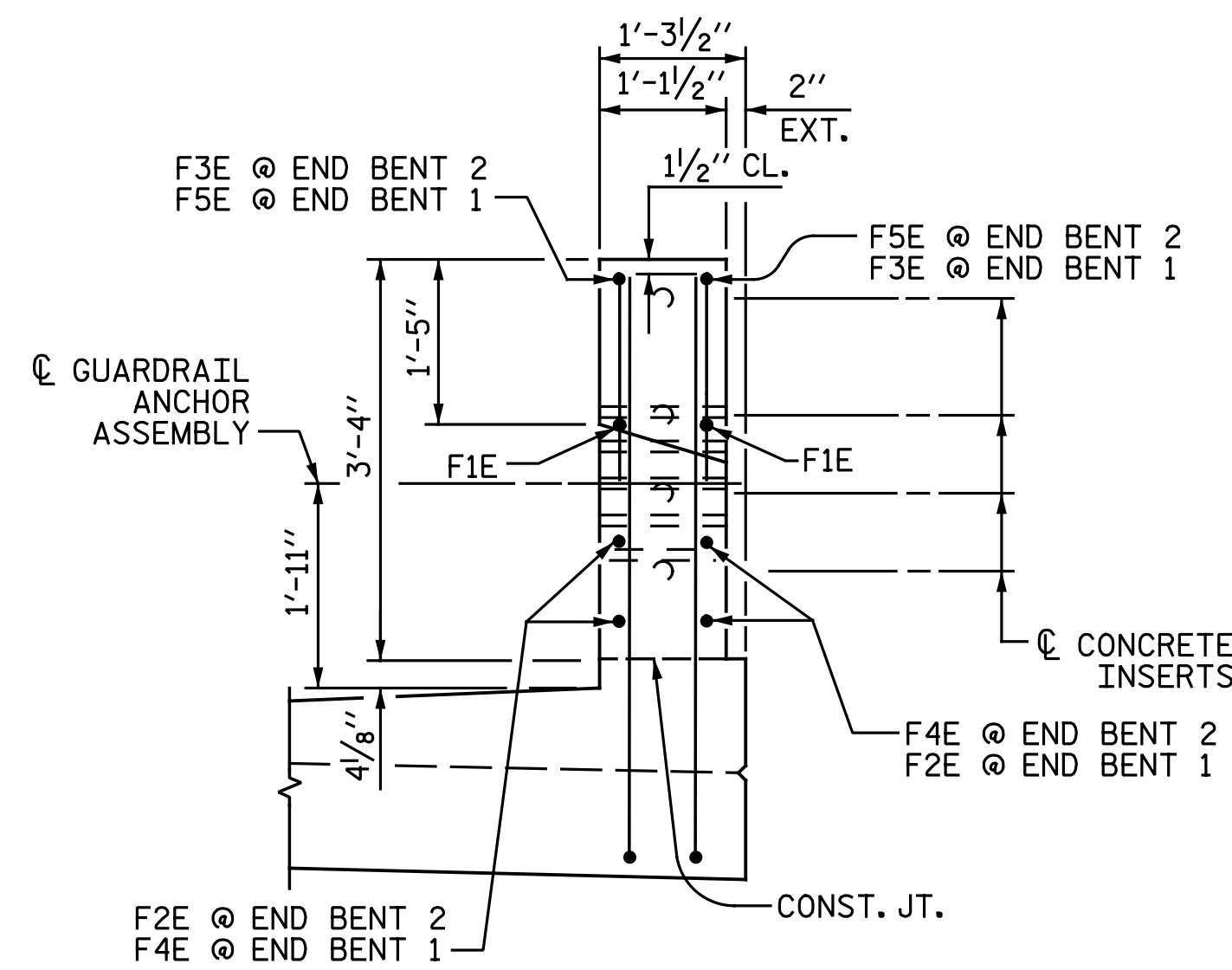


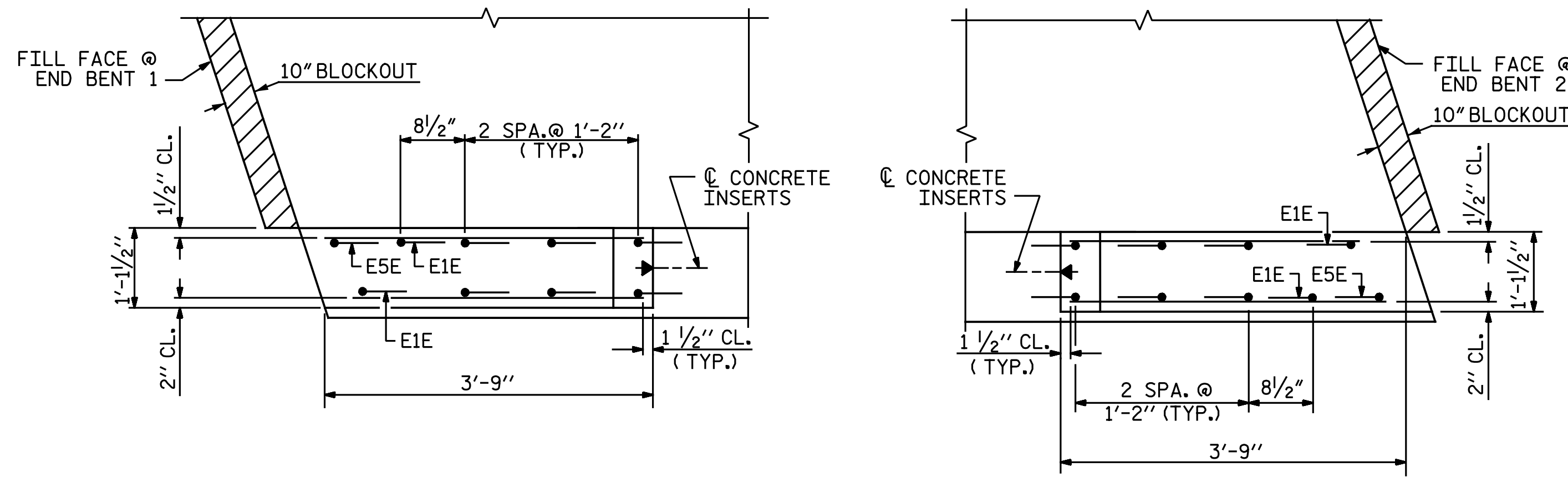
PLAN OF RAIL POST SPACING



ELEVATION



END VIEW



PLAN
END POST DETAILS

BILL OF MATERIAL
ONE END POST (2 REQ'D)

BILL FOR ONE END POST					
BAR	NO.	SIZE	TYPE	LENGTH	WEIGHT
E1E	2	#7	1	3' - 5"	14
E2E	2	#7	1	4' - 0"	16
E3E	2	#7	1	4' - 7"	19
E4E	2	#7	1	5' - 1"	21
E5E	1	#7	1	3' - 3"	7
F1E	2	#6	STR.	3' - 3"	10
F2E	2	#6	STR.	3' - 6"	11
F3E	1	#6	STR.	3' - 10"	6
F4E	2	#6	STR.	3' - 11"	12
F5E	1	#6	STR.	4' - 3"	6
EPOXY COATED REINFORCING STEEL				LBS.	122
CLASS AA CONCRETE				C.Y.	0.5

BAR TYPE

ALL BAR DIMENSIONS ARE OUT TO OUT.

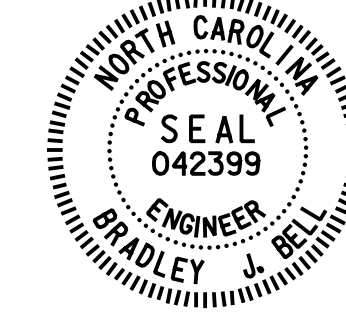
NOTES:

- FOR DETAIL OF GUARDRAIL ANCHOR ASSEMBLY, SEE "GUARDRAIL ANCHORAGE DETAILS FOR METAL RAILS" SHEET.
- FOR DETAILS OF CONCRETE INSERT, SEE "3 BAR METAL RAIL" SHEET 3 OF 3.
- ALL REINFORCING STEEL IN SIDEWALK AND END POSTS SHALL BE EPOXY COATED.
- NO ADDITIONAL PAYMENT SHALL BE MADE FOR THE CONCRETE END POSTS AS THIS IS CONSIDERED INCIDENTAL TO THE CONSTRUCTION OF THE 3 BAR METAL RAIL.

PROJECT NO. U-3330
NASH COUNTY
 STATION: 18+22.61 -Y1-

DRAWN BY : N. B. SPEAKS DATE : 4-28-16
 CHECKED BY : A. H. SHARPE DATE : 9-6-16

DOCUMENT NOT CONSIDERED FINAL
UNLESS ALL SIGNATURES COMPLETED



DocuSigned by:
Bradley J. Bell
C41AF8ECAC3A34...
1/27/2017

Michael Baker
INTERNATIONAL

Michael Baker Engineering
8000 Regency Parkway, Suite 600
Cary, North Carolina 27518
NC License No.: F-1084

STATE OF NORTH CAROLINA
DEPARTMENT OF TRANSPORTATION
RALEIGH
SUPERSTRUCTURE
RAIL POST SPACINGS
AND
END OF RAIL DETAILS
RIGHT LANES

REVISIONS						SHEET NO.
NO.	BY:	DATE:	NO.	BY:	DATE:	S2-21
1			3			TOTAL SHEETS
2			4			39