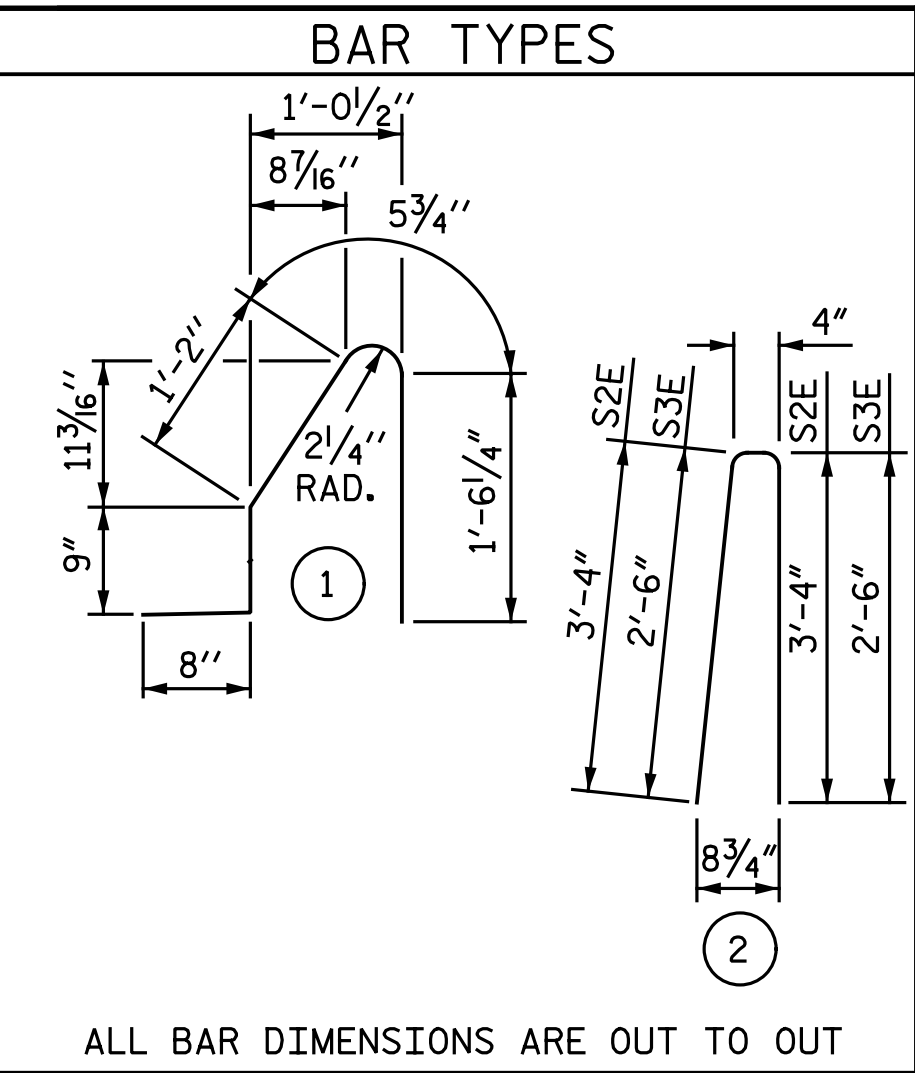


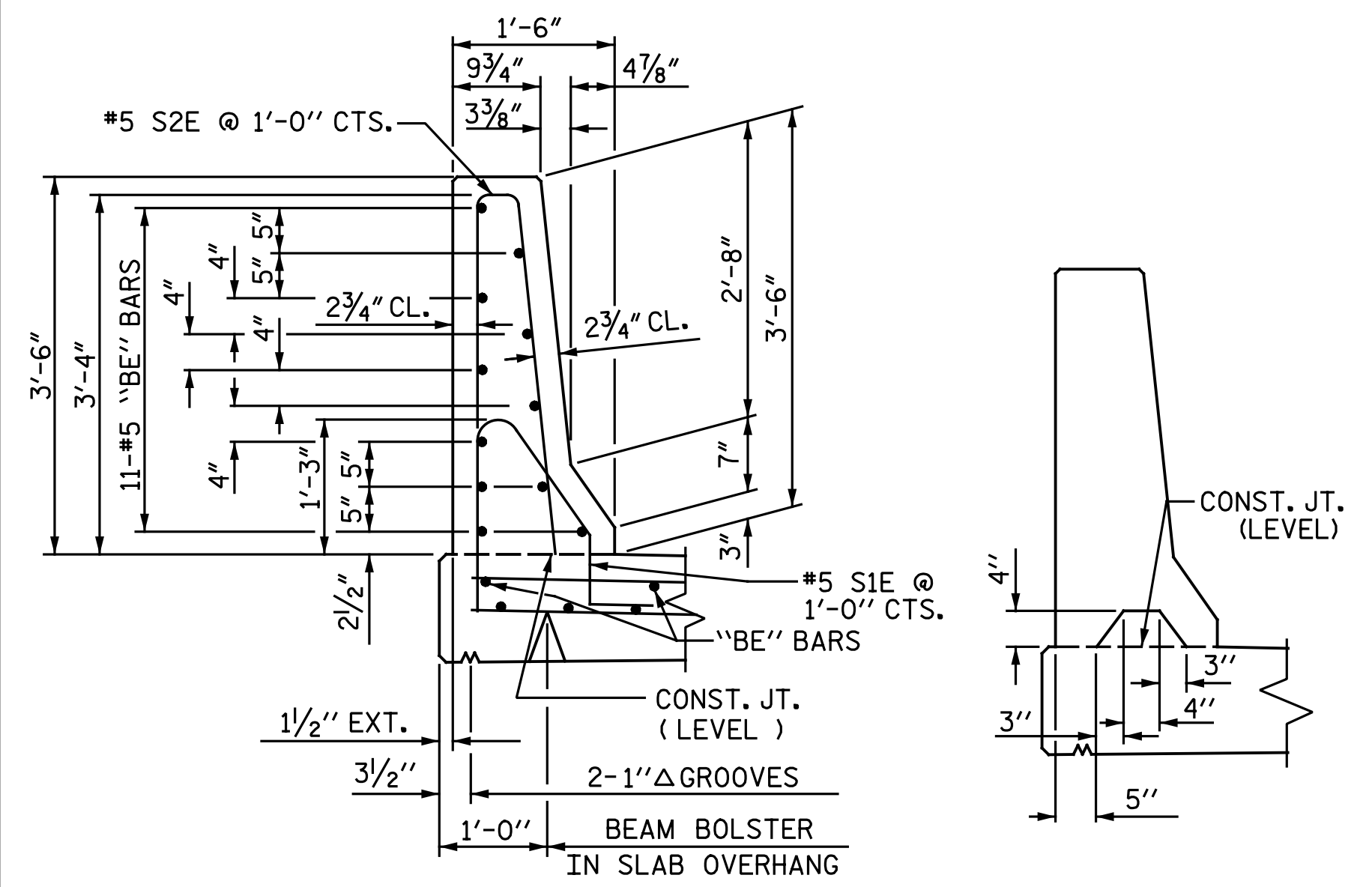
PLAN OF BARRIER RAIL



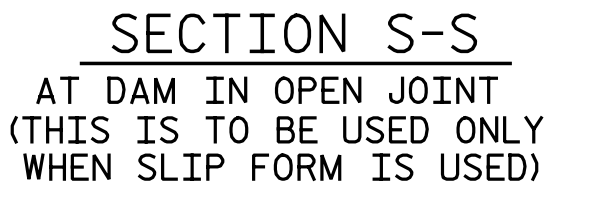
ALL BAR DIMENSIONS ARE OUT TO OUT

BILL OF MATERIAL					
FOR CONCRETE BARRIER RAIL ONLY					
BAR NO.	NO.	SIZE	TYPE	LENGTH	WEIGHT
B1E	66	#5	STR.	27' - 1"	1,864
B2E	22	#5	STR.	9' - 5"	216
B3E	22	#5	STR.	13' - 11"	319
S1E	209	#5	1	4' - 7"	999
S2E	205	#5	2	7' - 0"	1,497
S3E	4	#5	2	5' - 4"	22
EPOXY COATED REINFORCING STEEL				LBS.	4,917
CLASS AA CONCRETE				C.Y.	27.8
CONCRETE BARRIER RAIL				L.F.	205.0

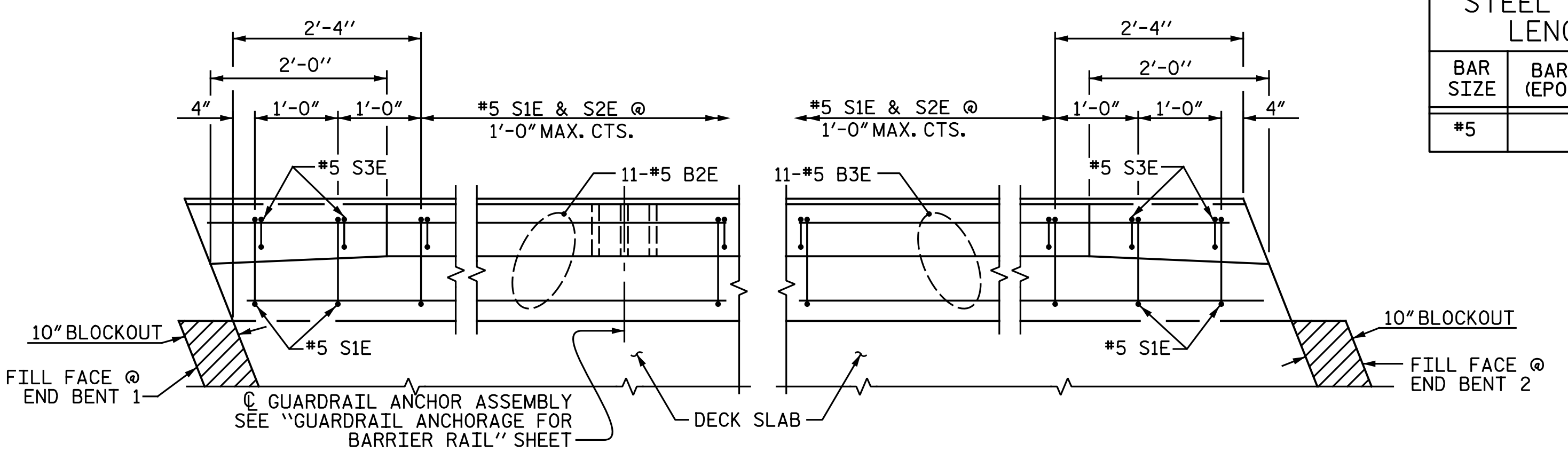
REINFORCING STEEL SPLICE LENGTHS	
BAR SIZE	BARRIER RAIL (EPOXY COATED)
#5	3'-5"



SECTION THRU RAIL



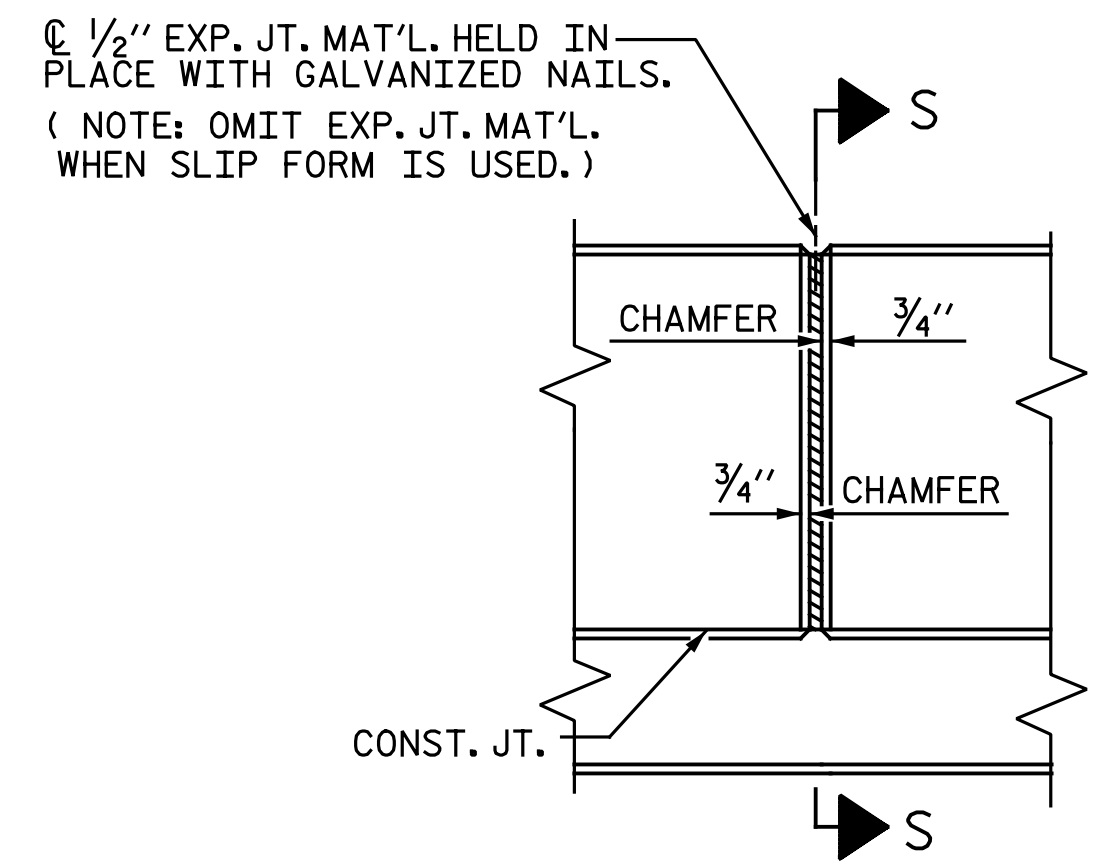
SECTION S-S AT DAM IN OPEN JOINT (THIS IS TO BE USED ONLY WHEN SLIP FORM IS USED)



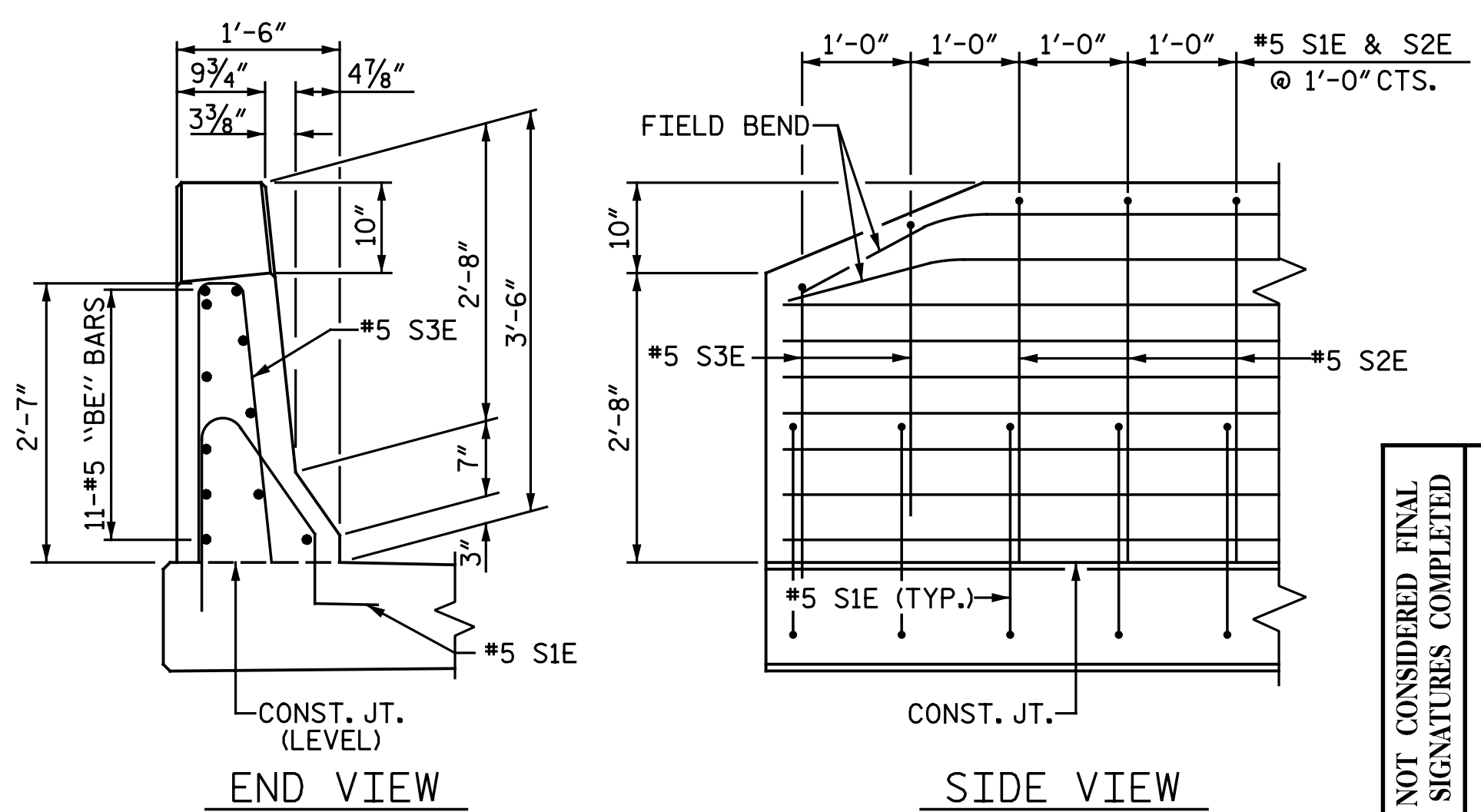
END BENT 1

END BENT 2

PLAN OF BARRIER RAIL



ELEVATION AT EXPANSION JOINTS
BARRIER RAIL DETAILS



END VIEW

SIDE VIEW

END OF RAIL DETAILS

NOTES

- BARRIER RAIL IN A CONTINUOUS UNIT SHALL NOT BE CAST UNTIL ALL SLAB CONCRETE IN THE UNIT HAS BEEN CAST AND HAS REACHED A MINIMUM COMPRESSIVE STRENGTH OF 3,000 PSI.
- ALL REINFORCING STEEL IN BARRIER RAILS SHALL BE EPOXY COATED.
- GROOVED CONTRACTION JOINTS, 1/2" IN DEPTH, SHALL BE TOOLED IN ALL EXPOSED FACES OF THE BARRIER RAIL AND IN ACCORDANCE WITH ARTICLE 825-10(B) OF THE STANDARD SPECIFICATIONS. THE CONTRACTION JOINT SHALL BE LOCATED AT EACH THIRD POINT BETWEEN BARRIER RAIL EXPANSION JOINTS. ONLY ONE CONTRACTION JOINT IS REQUIRED AT MIDPOINT OF BARRIER RAIL SEGMENTS LESS THAN 20 FEET IN LENGTH AND NO CONTRACTION JOINTS ARE REQUIRED FOR THOSE SEGMENTS LESS THAN 10 FEET IN LENGTH.

PROJECT NO. U-3330
NASH COUNTY
 STATION: 18+22.61 -Y1-

ASSEMBLED BY : N.B. SPEAKS	DATE : 4-28-16
CHECKED BY : A.H. SHARPE	DATE : 9-6-16
DRAWN BY : JMB 1/88	REV. 5/7/03 RWW/JTE
CHECKED BY : GGH 1/88	REV. 5/1/06 TLA/GM
	REV. 10/1/11 MAA/GM

DOCUMENT NOT CONSIDERED FINAL UNLESS ALL SIGNATURES COMPLETED

DocuSigned by:
Bradley J. Bell
 C41A3F8C3A3434...
 1/27/2017

Michael Baker INTERNATIONAL

Michael Baker Engineering
 8000 Regency Parkway, Suite 600
 Cary, North Carolina 27518
 NC License No. : F-1084

STATE OF NORTH CAROLINA DEPARTMENT OF TRANSPORTATION RALEIGH					
STANDARD CONCRETE BARRIER RAIL RIGHT LANES					
REVISIONS					
NO.	BY:	DATE:	NO.	BY:	DATE:
1			3		
2			4		

SHEET NO. S2-17	
TOTAL SHEETS	39