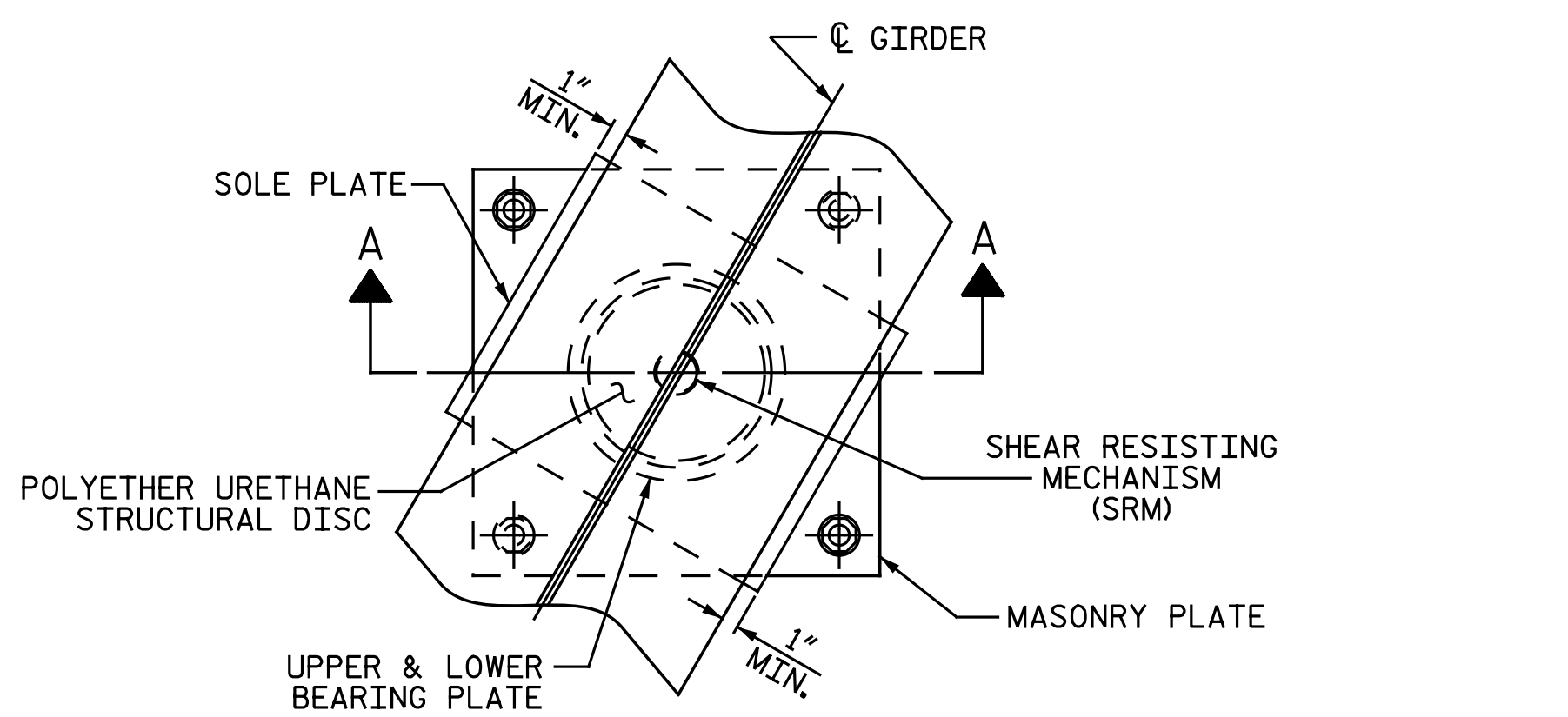
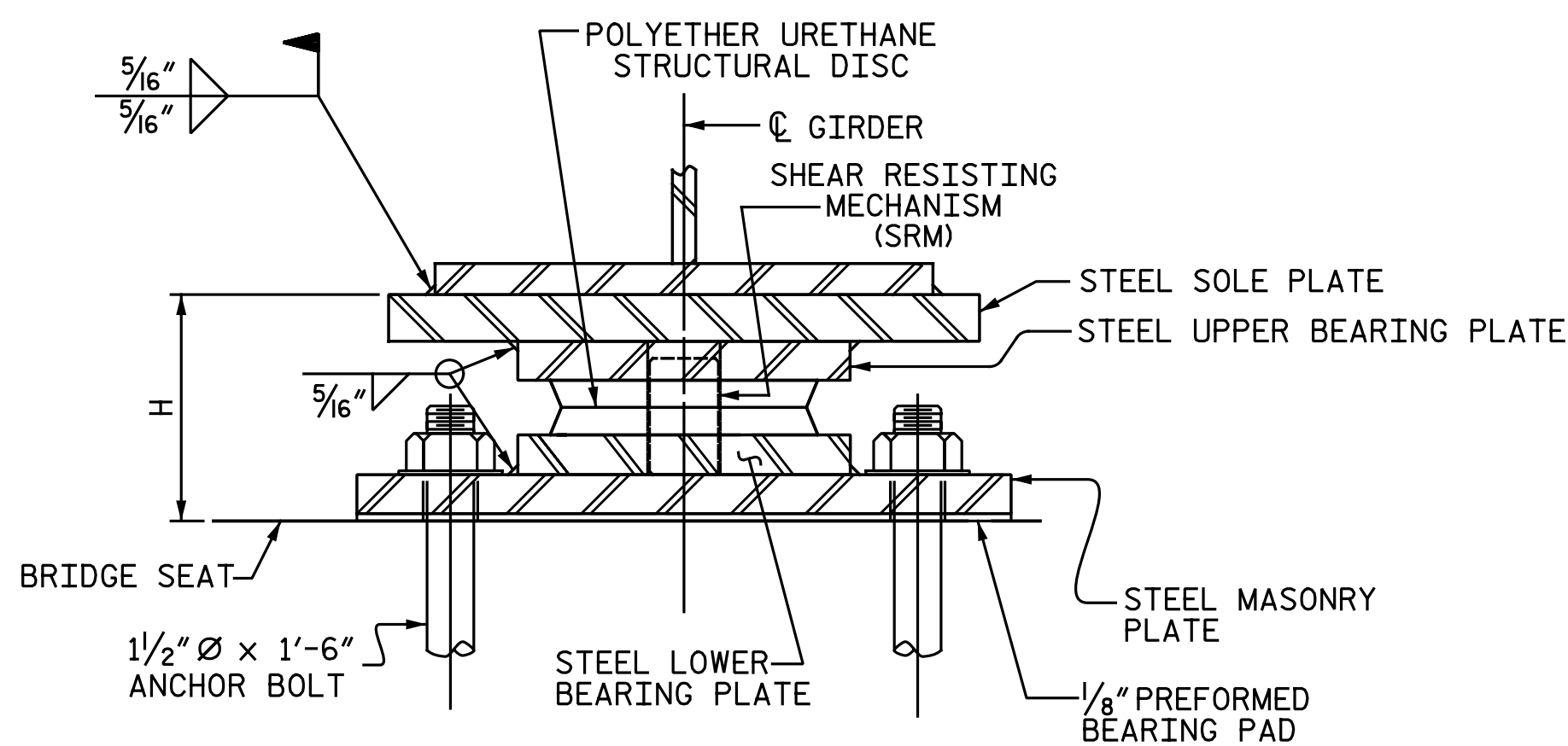


NOTES

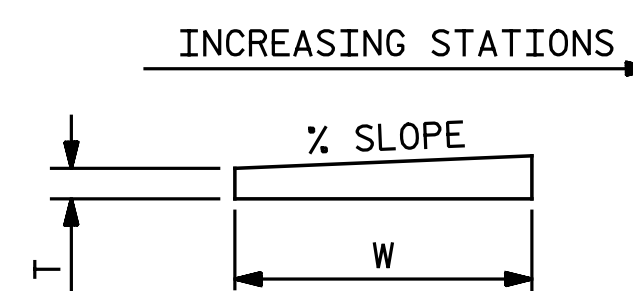
- FOR DISC BEARINGS, SEE SPECIAL PROVISIONS.
- ALL BEARING PLATES SHALL BE AASHTO M270 GRADE 50W OR GRADE 50.
- AT ALL POINTS OF SUPPORT, NUTS FOR ANCHOR BOLTS SHALL BE FINGER-TIGHTENED PLUS AN ADDITIONAL 1/4 TURN. THE THREAD OF THE NUT AND BOLT SHALL THEN BE BURRED WITH A SHARP POINTED TOOL.
- WHEN WELDING THE SOLE PLATE TO THE GIRDER, USE TEMPERATURE INDICATING WAX PENS, OR OTHER SUITABLE MEANS, TO ENSURE THAT THE TEMPERATURE OF THE BEARING DOES NOT EXCEED 250°F. TEMPERATURES ABOVE THIS MAY DAMAGE THE TFE OR URETHANE DISC.
- SOLE PLATES SHOULD BE WELDED TO GIRDER FLANGES BEFORE FALSEWORK IS PLACED.
- ALL SURFACES OF BEARING PLATES SHALL BE SMOOTH AND STRAIGHT.
- FOR THERMAL SPRAYED COATINGS (METALLIZATION), SEE SPECIAL PROVISIONS.
- THE MINIMUM ROTATIONAL CAPACITY FOR ALL BEARINGS SHALL BE 0.02 RADIAN.



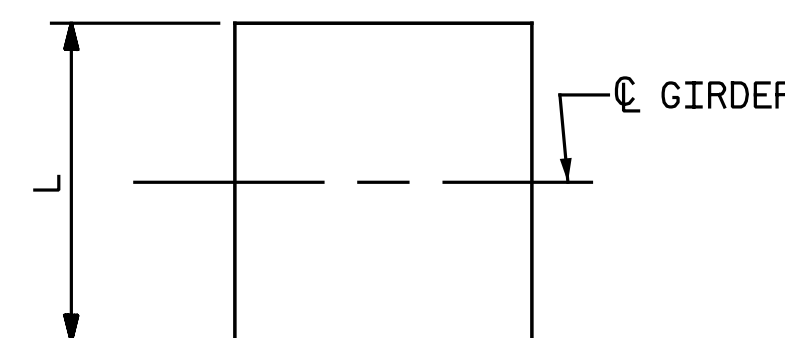
PLAN



SECTION A-A  
DB1, FIXED



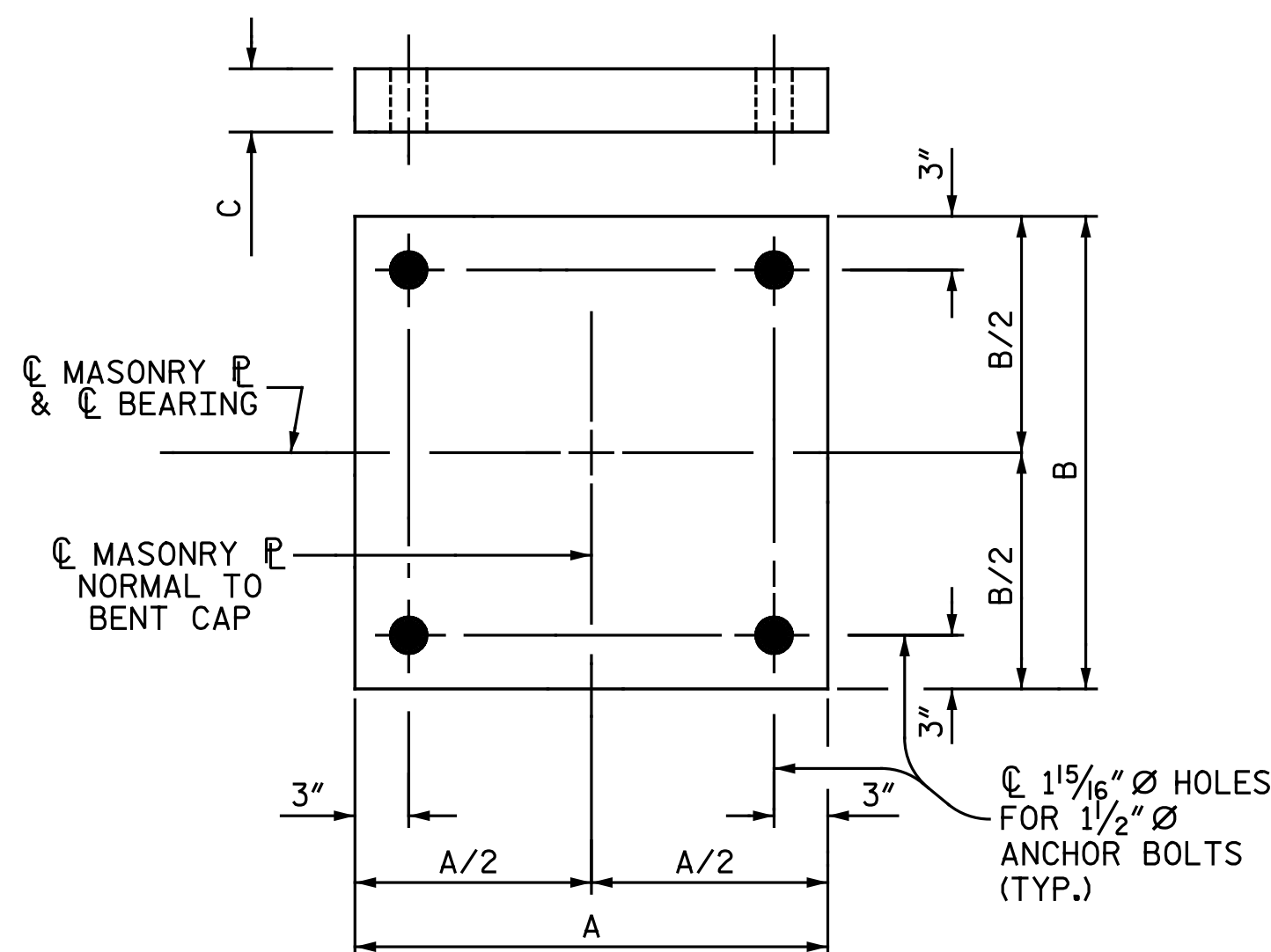
ELEVATION



PLAN

NOTE:  
DIMENSIONS "W" AND "T" SHALL BE DETERMINED BY THE BEARING MANUFACTURER.

SOLE PLATE DETAILS



PLAN

MASONRY PLATE DETAILS

PROJECT NO. U-3330  
NASH COUNTY  
STATION: 18+22.61 -Y1-

ASSEMBLED BY : N. B. SPEAKS	DATE : 7-05-16
CHECKED BY : T. M. GARRISON	DATE : 8-29-16
DRAWN BY : TMG 08/13	REV. REV.
CHECKED BY : EKP 10/13	REV. REV.

DESIGNATIONS		LOCATION	NUMBER OF BEARINGS	DIMENSIONS				LOADS AND MOVEMENT		UNFACTORED VERTICAL LOAD (KIPS)	FACTORED HORIZONTAL LOAD (KIPS)	ONE-WAY MOVEMENT (IN.)		
BEARINGS	MASONRY PL			BEARING H (IN.)	MASONRY PL A (IN.)	SOLE PLATE B (IN.)	SOLE PLATE C (IN.)	TOP SLOPE (%)	SOLE PLATE L (IN.)				DEAD	LIVE
DB1 (FIXED)	M1	BENT 1	5	5 1/2	22 1/2	22 1/2	3/4	0	20	276	12	176	94	0

DOCUMENT NOT CONSIDERED FINAL UNLESS ALL SIGNATURES COMPLETED			STATE OF NORTH CAROLINA DEPARTMENT OF TRANSPORTATION RALEIGH STANDARD DISC BEARING DETAILS RIGHT LANES		SHEET NO. S2-14
	REVISIONS				TOTAL SHEETS 39
	NO.	BY:	DATE:	NO.	
1			3		
2			4		

**Michael Baker International**  
 Michael Baker Engineering  
 8000 Regency Parkway, Suite 600  
 Cary, North Carolina 27518  
 NC License No.: F-1084