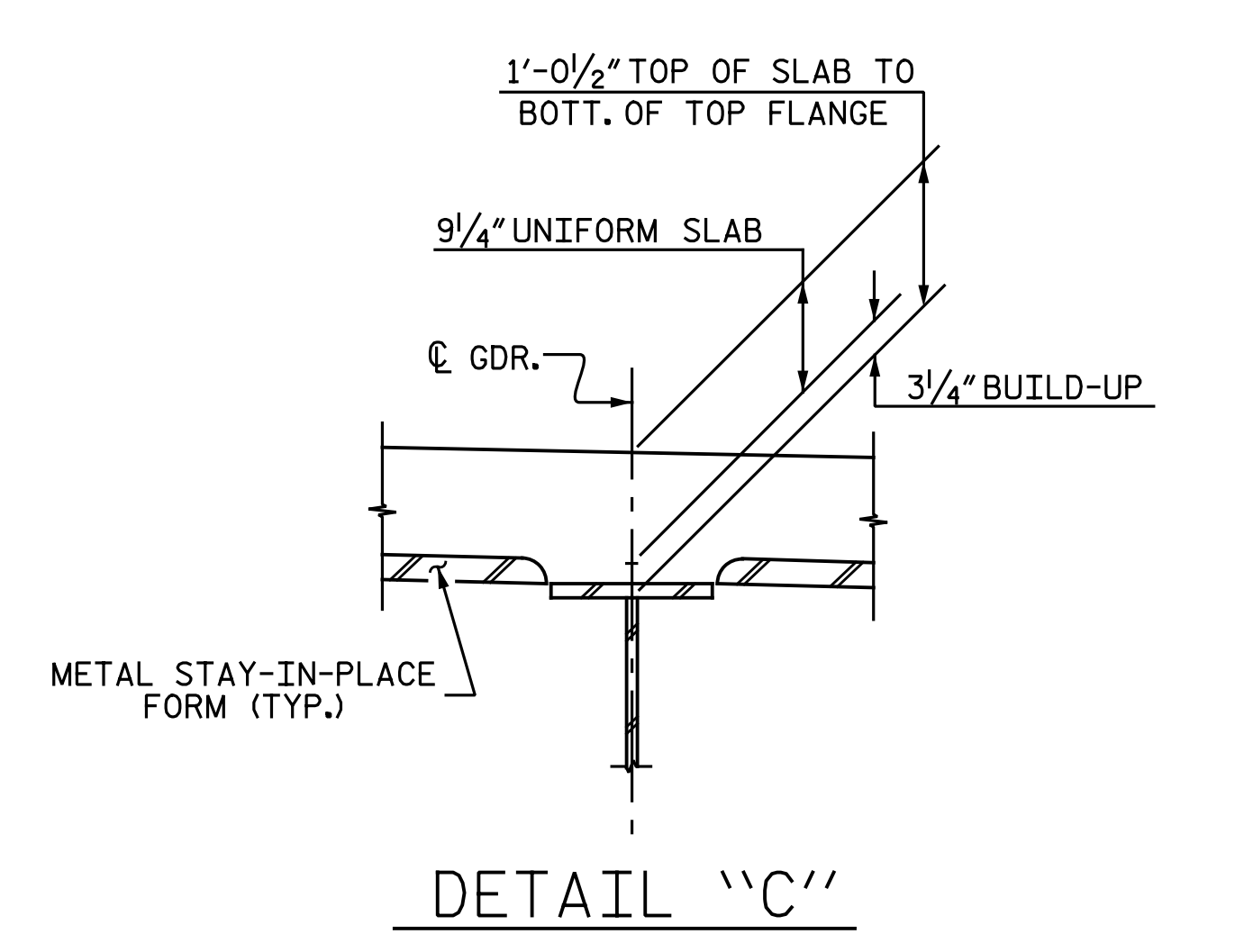
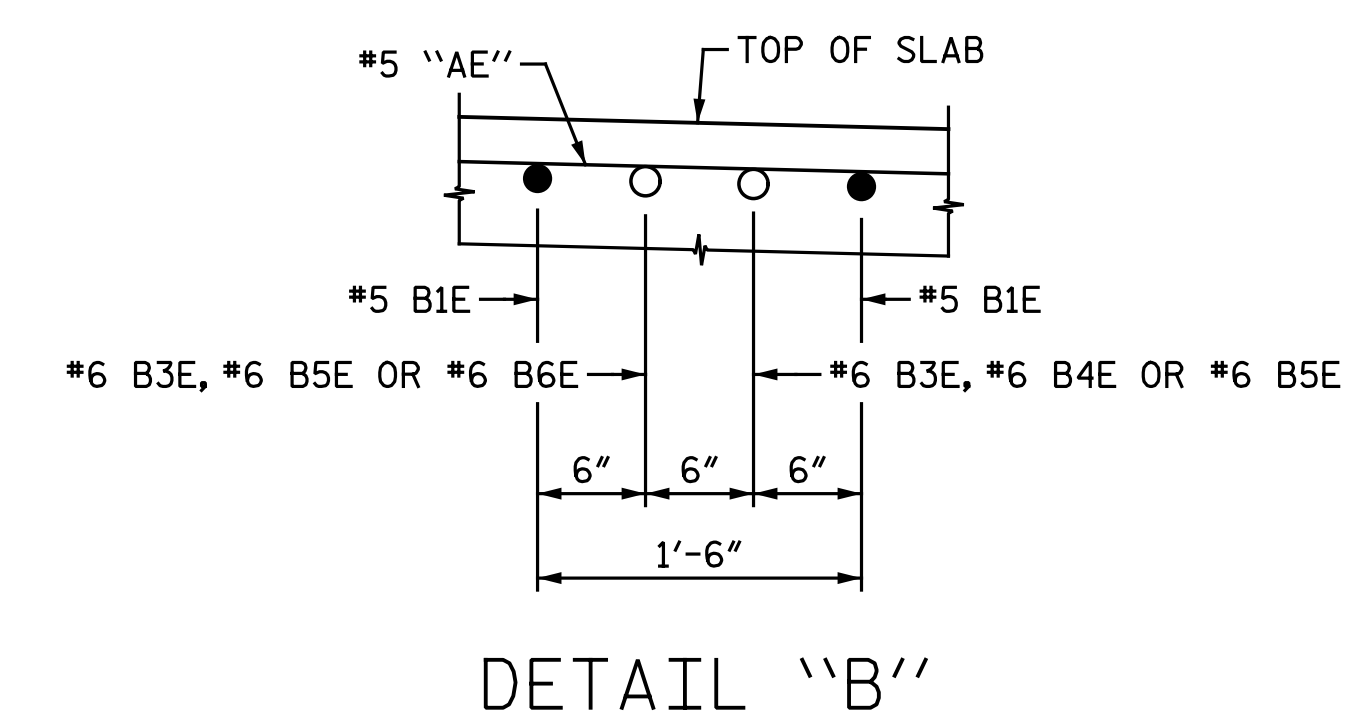
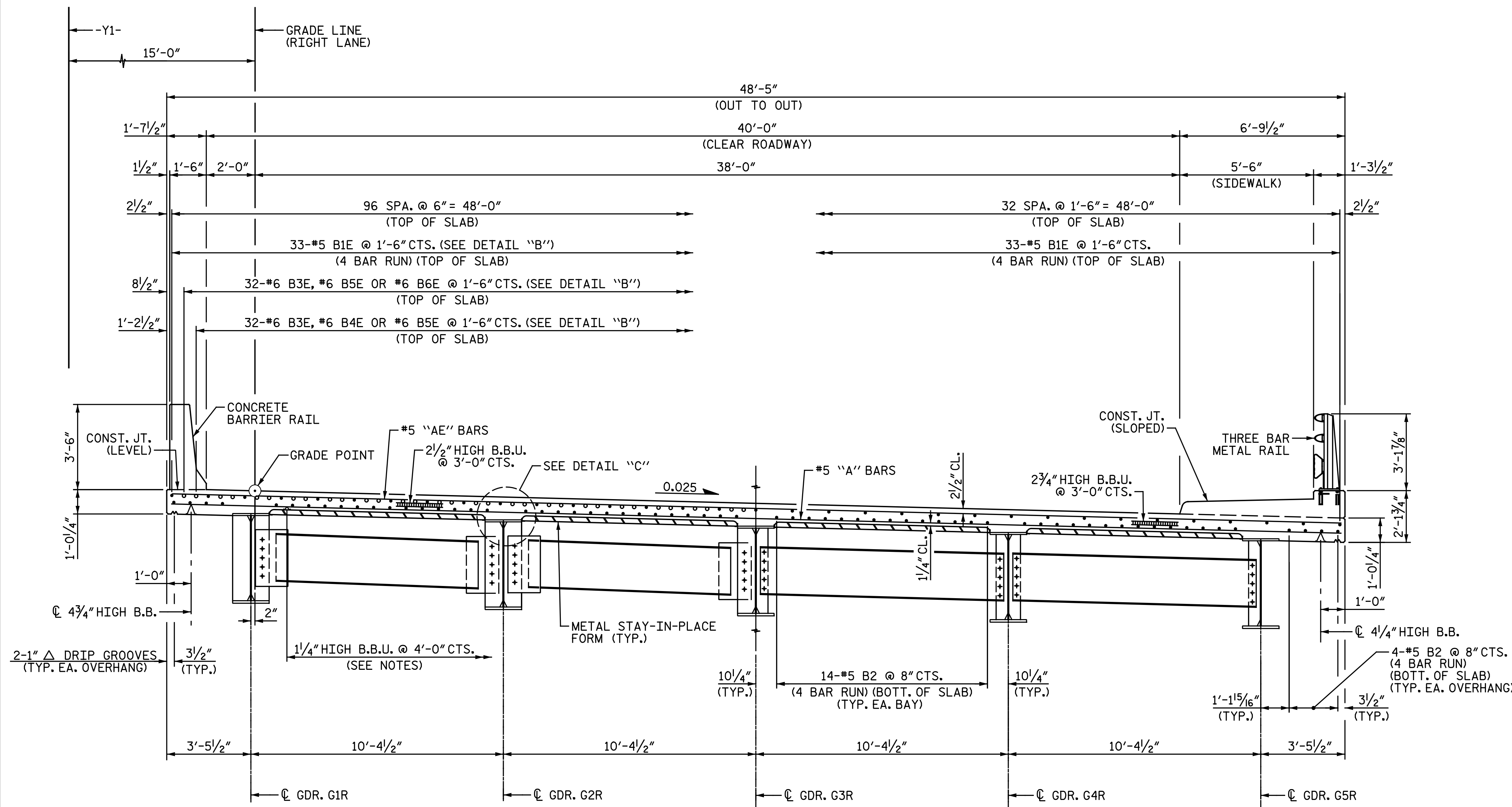


**NOTES:**  
FOR NOTES, SEE "TYPICAL SECTION", SHEET 1 OF 2.



**PARTIAL SECTION AT INTERMEDIATE & BENT DIAPHRAGM**  
(AREAS WITH ADDITIONAL LONGITUDINAL REINFORCEMENT)  
(SEE PLAN OF SPAN FOR LOCATIONS)

**PARTIAL SECTION AT INTERMEDIATE DIAPHRAGM**  
(AREAS WITHOUT ADDITIONAL LONGITUDINAL REINFORCEMENT)  
(SEE PLAN OF SPAN FOR LOCATIONS)

**TYPICAL SECTION**

PROJECT NO. U-3330  
NASH COUNTY  
STATION: 18+22.61 -Y1-  
SHEET 2 OF 2

DRAWN BY : M. D. MAYHEW DATE : 8-8-16  
CHECKED BY : B. J. BELL DATE : 9-7-16

DOCUMENT NOT CONSIDERED FINAL UNLESS ALL SIGNATURES COMPLETED	<p>DocuSigned by: <i>Bradley J. Bell</i> C41AF8EAC3A3434 1/27/2017</p>	STATE OF NORTH CAROLINA DEPARTMENT OF TRANSPORTATION RALEIGH SUPERSTRUCTURE TYPICAL SECTION RIGHT LANES		SHEET NO. <b>S2-6</b>	
		REVISIONS			TOTAL SHEETS <b>39</b>
		NO.	BY:	DATE:	
		1	3	4	
<b>Michael Baker INTERNATIONAL</b>		Michael Baker Engineering 8000 Regency Parkway, Suite 600 Cary, North Carolina 27518 NC License No.: F-1084			