

**PLAN**

FOR BERM WIDTHS AND ELEVATIONS SEE GENERAL DRAWING AND "SLOPE PROTECTION DETAILS" SHEET 2 OF 2.

**GENERAL NOTES**

STRAIGHT EDGING WILL NOT BE REQUIRED UNLESS, IN THE OPINION OF THE ENGINEER, VISUAL INSPECTION INDICATES A NEED FOR IT.

MEASUREMENT AND PAYMENT SHALL BE AS PRESCRIBED IN SECTION 462 OF THE STANDARD SPECIFICATIONS.

FOR BERM WIDTH, SEE GENERAL DRAWING.

SLOPE PROTECTION SHALL CONSIST OF 4" POURED-IN-PLACE CONCRETE PAVING AS SHOWN IN THE DETAILS ON THIS SHEET.

CONCRETE SHALL BE CLASS "B".

THE CONCRETE SURFACE SHALL BE FLOATED WITH A WOODEN FLOAT AND FINISHED.

WELDED WIRE FABRIC REINFORCING SHALL BE 6 X 6 - W1.4 X W1.4, 60" WIDE.

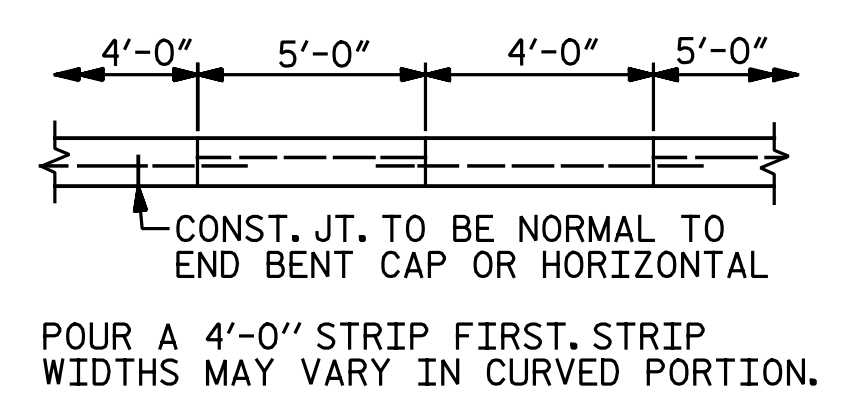
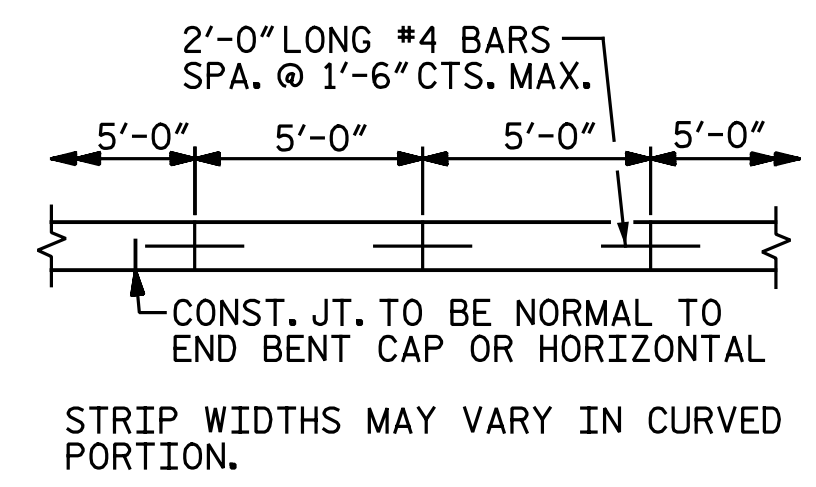
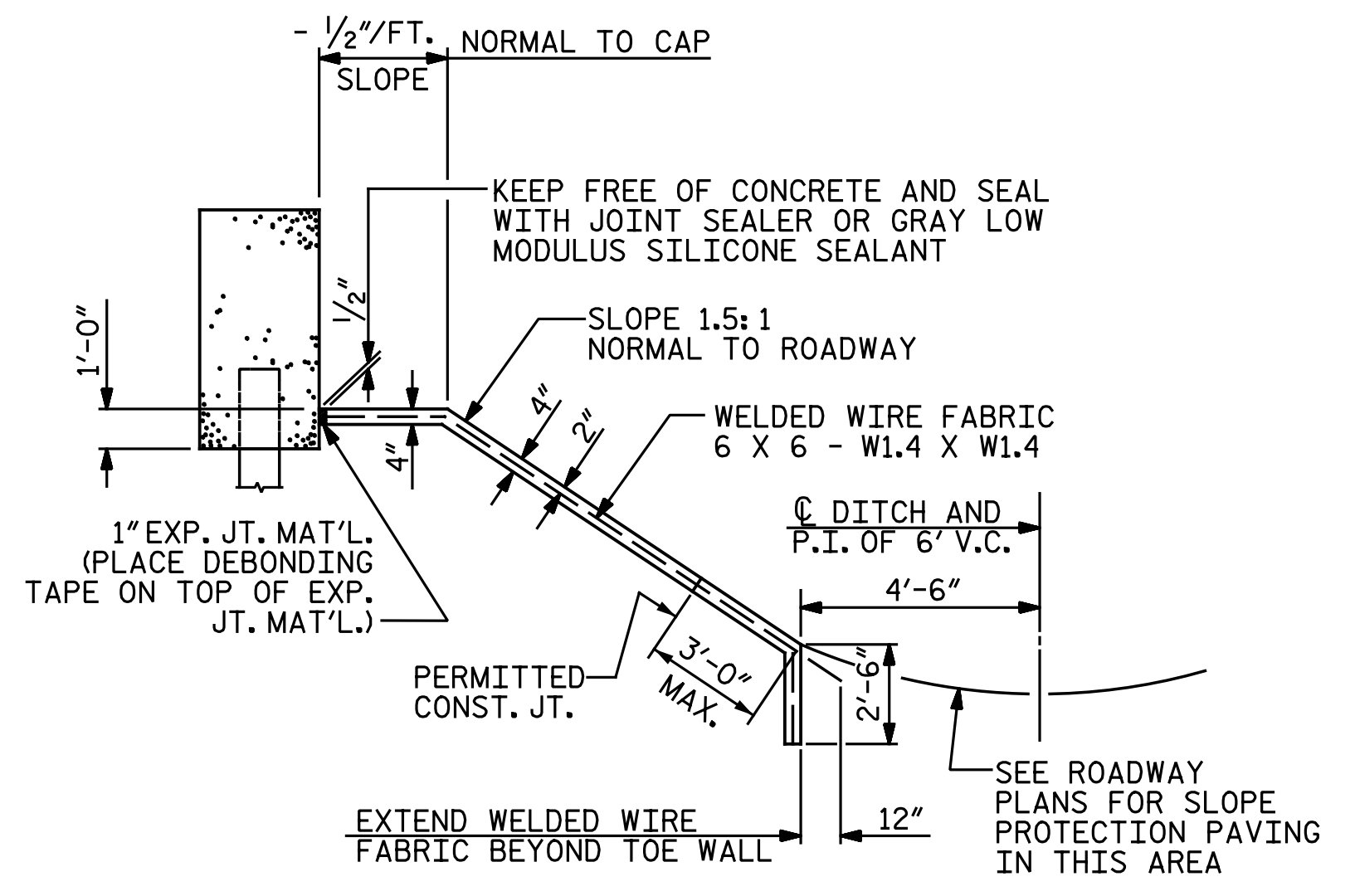
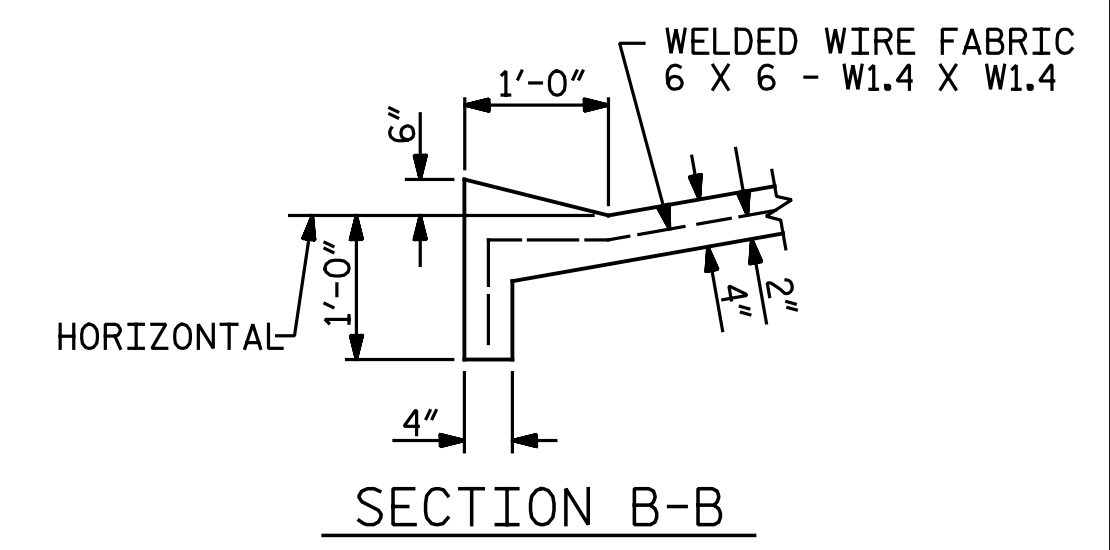
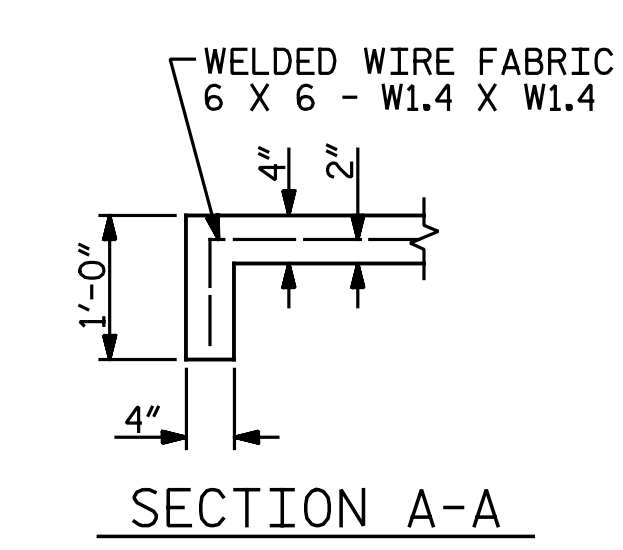
SLOPE PROTECTION SHALL BE POURED IN 5' STRIPS AS SHOWN IN THE "POURING DETAIL" WITH 2'-0" LONG #4 BARS PLACED ALONG THE SLOPE BETWEEN STRIPS AT 1'-6" MAXIMUM SPACING.

SLOPE PROTECTION MAY BE POURED IN ALTERNATE 4' AND 5' STRIPS AS SHOWN IN THE "OPTIONAL POURING DETAIL" WITH ADJACENT RUNS OF WELDED WIRE FABRIC LAPPING AT LEAST 6".

THE COST OF THE WELDED WIRE FABRIC AND #4 BARS, IF USED, SHALL BE INCLUDED IN THE CONTRACT UNIT PRICE BID PER SQUARE YARD FOR SLOPE PROTECTION.

| BRIDGE @ STA. 18+22.61 -Y1- (LEFT LANE) | 4 INCH SLOPE PROTECTION | * WELDED WIRE FABRIC 60 INCHES WIDE |
|---|-------------------------|-------------------------------------|
|   | SQUARE YARDS            | APPROX. L.F.                        |
| END BENT 1                              | 241                     | 482                                 |
| END BENT 2                              | 264                     | 528                                 |

\* QUANTITY SHOWN IS BASED ON 5' POURS.



PROJECT NO. U-3330  
NASH COUNTY  
 STATION: 18+22.61 -Y1-  
 SHEET 1 OF 2

DRAWN BY : CEM / MDM DATE : 9-6-16  
 CHECKED BY : I. M. GARRISON DATE : 9-6-16

DOCUMENT NOT CONSIDERED FINAL UNLESS ALL SIGNATURES COMPLETED

DocuSigned by:  
Bradley J. Bell  
1/27/2017

STATE OF NORTH CAROLINA  
DEPARTMENT OF TRANSPORTATION  
RALEIGH

**SLOPE PROTECTION DETAILS**

**LEFT LANES**

| REVISIONS |     |       |     |     |       | SHEET NO.    |
|-----------|-----|-------|-----|-----|-------|--------------|
| NO.       | BY: | DATE: | NO. | BY: | DATE: | SI-35        |
| 1         |     |       | 3   |     |       | TOTAL SHEETS |
| 2         |     |       | 4   |     |       | 38           |

**Michael Baker International**

Michael Baker Engineering  
8000 Regency Parkway, Suite 600  
Cary, North Carolina 27518  
NC License No.: F-1084