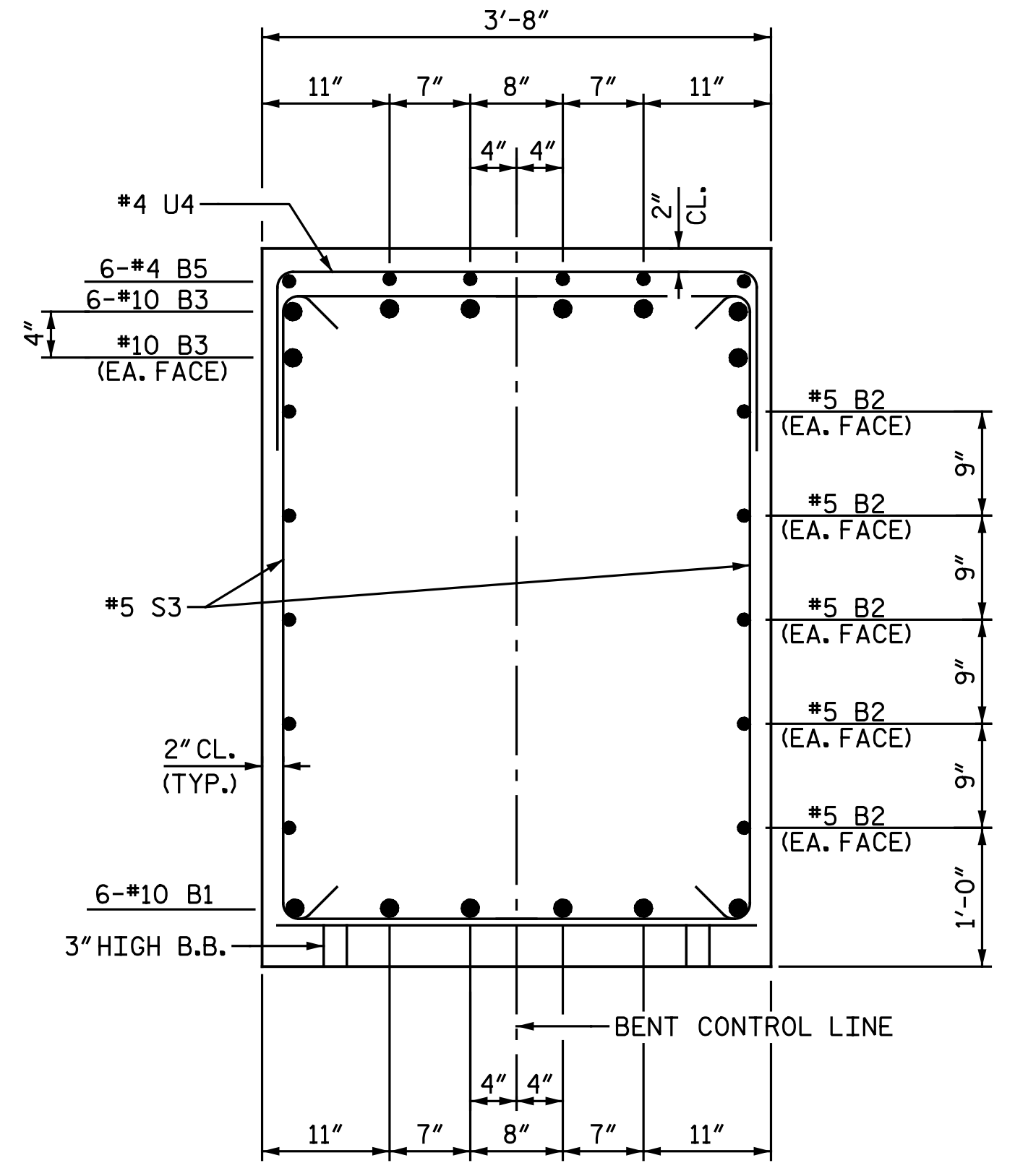
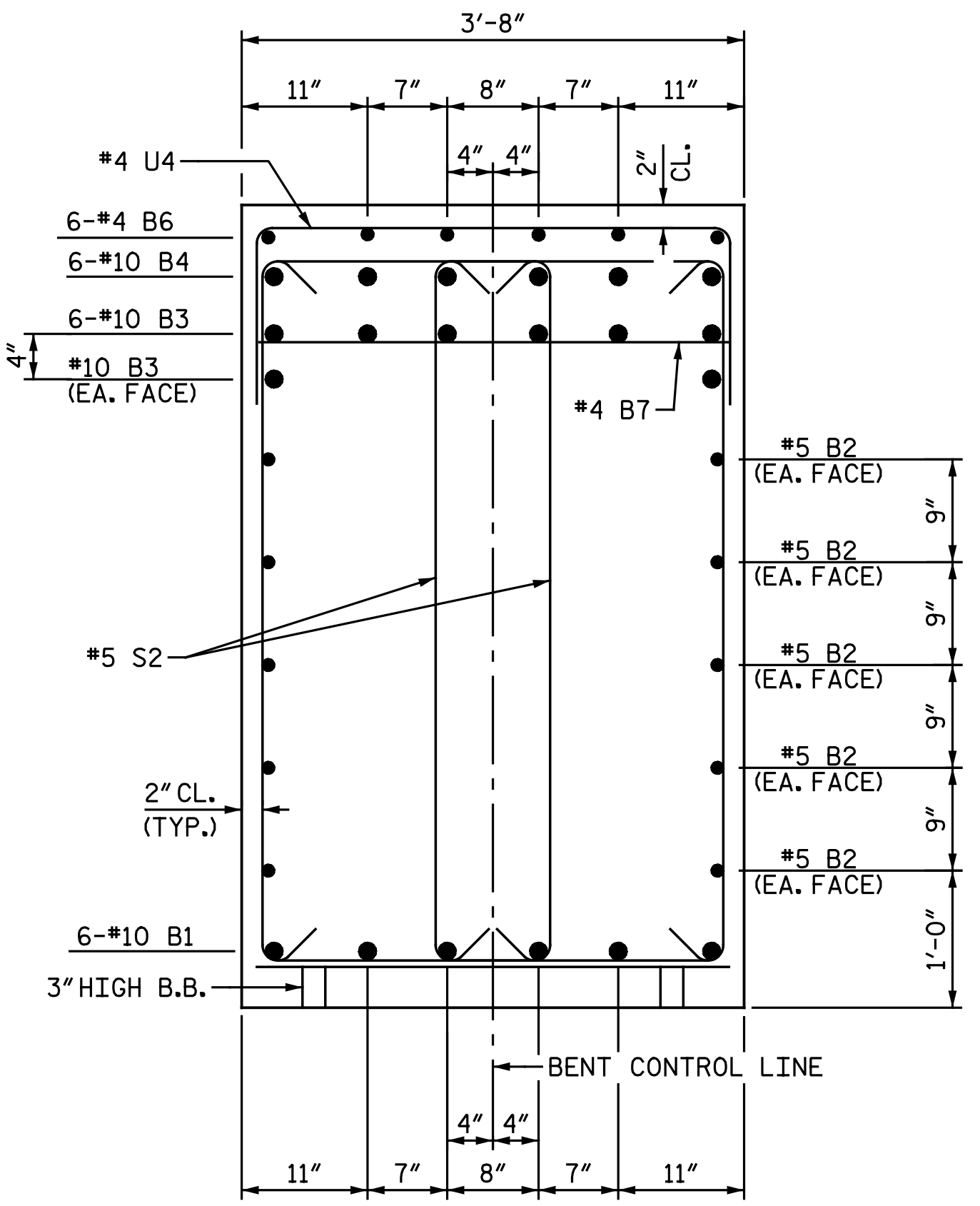


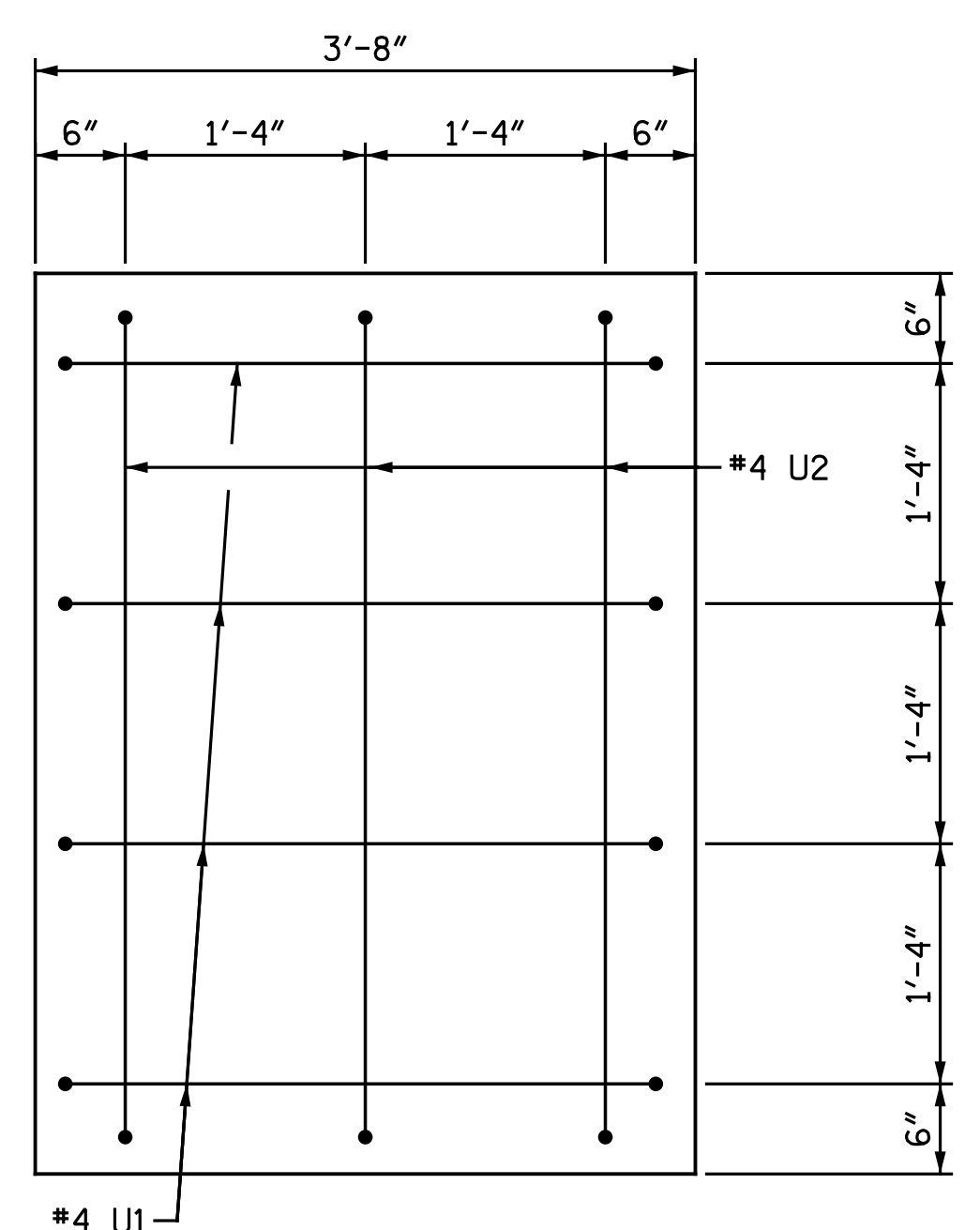
SECTION C-C
(INVERT ALTERNATE STIRRUP PAIRS)



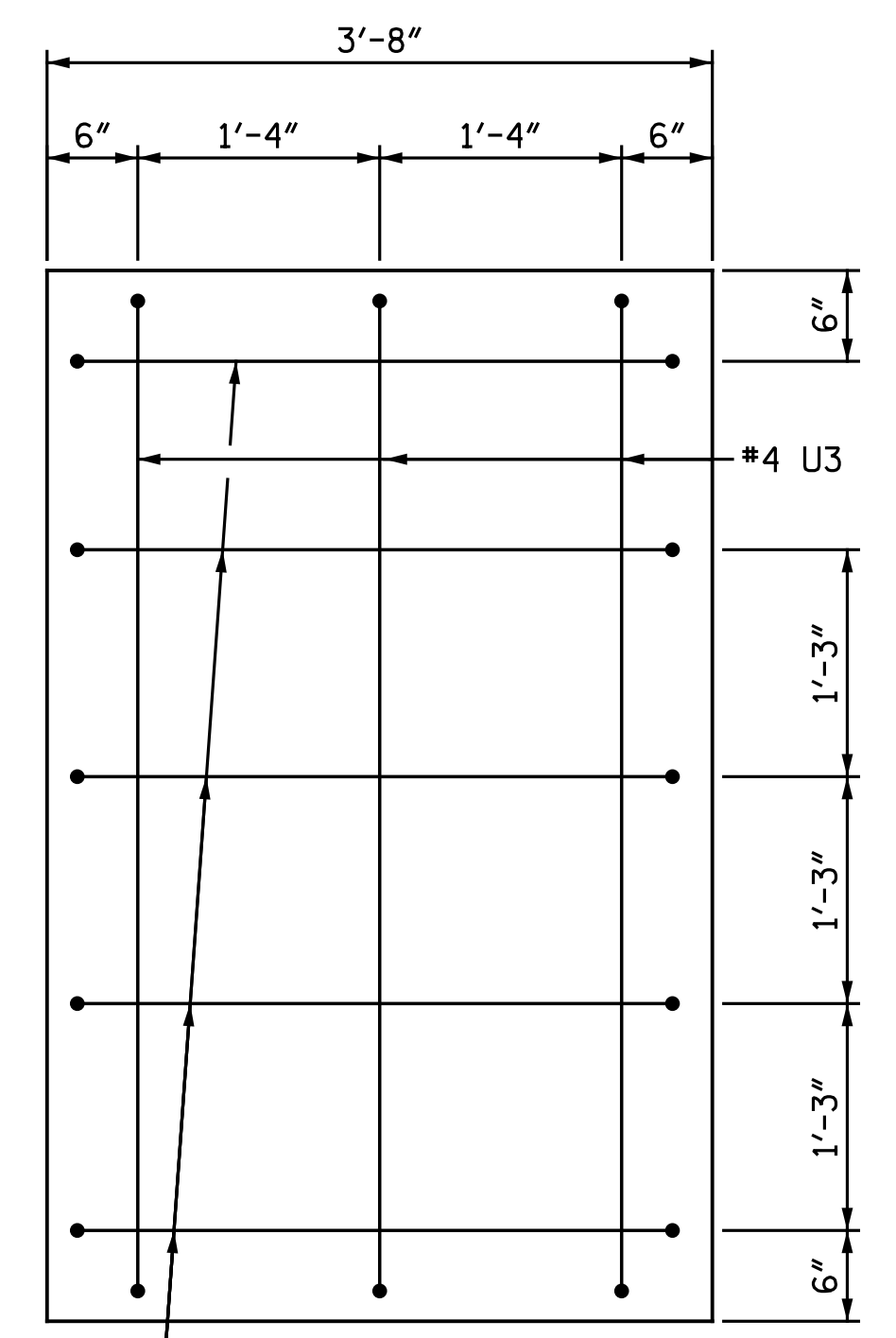
SECTION D-D
(INVERT ALTERNATE STIRRUPS)



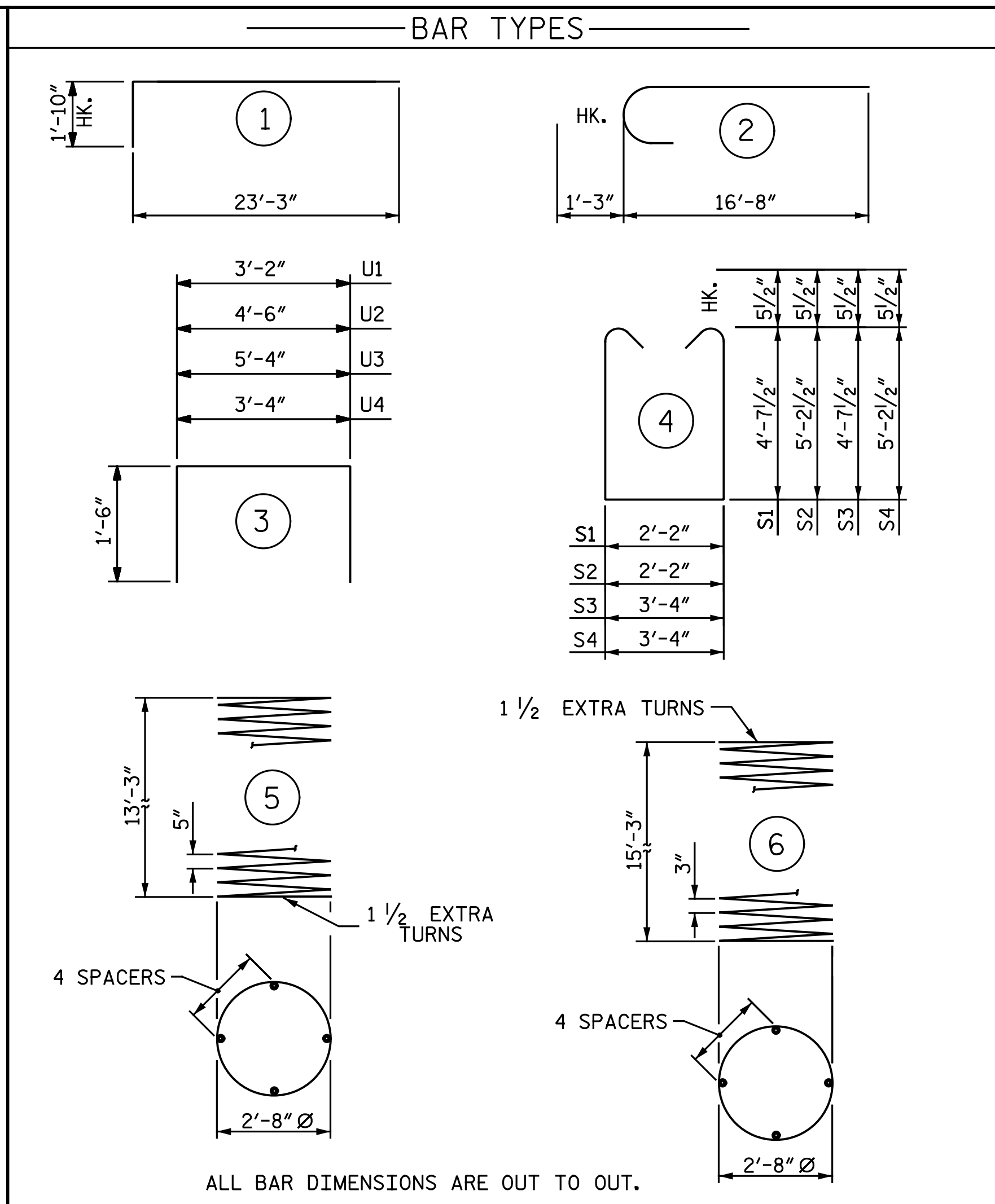
SECTION E-E
(INVERT ALTERNATE STIRRUP PAIRS)



VIEW F-F
ONLY END STIRRUPS SHOWN FOR CLARITY.



VIEW G-G
ONLY END STIRRUPS SHOWN FOR CLARITY.



ALL BAR DIMENSIONS ARE OUT TO OUT.
 * THE SP-1 SPIRAL REINFORCING STEEL SHALL BE W31 OR D-31 COLD DRAWN WIRE OR #5 PLAIN OR DEFORMED BAR.
 ** THE SP-2 SPIRAL REINFORCING STEEL SHALL BE W20 OR D-20 COLD DRAWN WIRE OR #4 PLAIN OR DEFORMED BAR.

BILL OF MATERIAL

| BENT 1 | | | | | |
|--------------------------------------|-----|------|----------|------------|--------|
| BAR | NO. | SIZE | TYPE | LENGTH | WEIGHT |
| B1 | 6 | #10 | STR. | 35' - 4" | 912 |
| B2 | 10 | #5 | STR. | 35' - 4" | 369 |
| B3 | 16 | #10 | 1 | 25' - 1" | 1,727 |
| B4 | 6 | #10 | STR. | 13' - 5" | 346 |
| B5 | 6 | #4 | STR. | 10' - 5" | 42 |
| B6 | 6 | #4 | STR. | 2' - 10" | 11 |
| B7 | 4 | #4 | STR. | 3' - 4" | 9 |
| M1 | 30 | #9 | STR. | 21' - 0" | 2,142 |
| S1 | 18 | #5 | 4 | 12' - 4" | 232 |
| S2 | 18 | #5 | 4 | 13' - 6" | 253 |
| S3 | 17 | #5 | 4 | 13' - 6" | 239 |
| S4 | 9 | #5 | 4 | 14' - 8" | 138 |
| U1 | 9 | #4 | 3 | 6' - 2" | 37 |
| U2 | 3 | #4 | 3 | 7' - 6" | 15 |
| U3 | 3 | #4 | 3 | 8' - 4" | 17 |
| U4 | 25 | #4 | 3 | 6' - 4" | 106 |
| V1 | 30 | #9 | 2 | 17' - 11" | 1,828 |
| REINFORCING STEEL | | | | LBS. | 8,423 |
| SP-1 | 3 | * | 5 | 273' - 11" | 857 |
| SP-2 | 3 | ** | 6 | 515' - 8" | 1,033 |
| SPIRAL COLUMN REINFORCING STEEL | | | | LBS. | 1,890 |
| CLASS A CONCRETE | | | | | |
| POUR 2 - COLUMNS | | | C.Y. | 11.8 | |
| POUR 3 - CAP | | | C.Y. | 25.9 | |
| TOTAL CLASS A CONCRETE | | | C.Y. | 37.7 | |
| DRILLED PIER CONCRETE | | | | | |
| POUR 1 - DRILLED PIERS | | | C.Y. | 14.7 | |
| 3'-6" DIA. DRILLED PIERS IN SOIL | | | LIN. FT. | 16 | |
| 3'-6" DIA. DRILLED PIERS NOT IN SOIL | | | LIN. FT. | 26 | |
| SID INSPECTIONS | | | EACH | 1 | |
| CSL TESTING | | | EACH | 1 | |
| ▲ CSL TUBES | | | LIN. FT. | 183.0 | |

▲ NO SEPARATE PAYMENT WILL BE MADE FOR CSL TUBES. CSL TUBES WILL BE INCLUDED IN THE UNIT BID PRICE FOR DRILLED PIERS.

PROJECT NO. U-3330
NASH COUNTY
 STATION: 18+22.61 -Y1-
 SHEET 2 OF 2

DRAWN BY: C. E. MAYHEW DATE: 8-18-16
 CHECKED BY: T. M. GARRISON DATE: 8-25-16

DOCUMENT NOT CONSIDERED FINAL UNLESS ALL SIGNATURES COMPLETED

DocuSigned by:
 Bradley J. Bell
 CA1A5F8EAC3A34
 1/27/2017

Michael Baker International
 Michael Baker Engineering
 8000 Regency Parkway, Suite 600
 Cary, North Carolina 27518
 NC License No.: F-1084

| STATE OF NORTH CAROLINA DEPARTMENT OF TRANSPORTATION RALEIGH | | | | | |
|--|-----|-------|-----|-----|-------|
| SUBSTRUCTURE | | | | | |
| BENT 1 DETAILS | | | | | |
| LEFT LANES | | | | | |
| REVISIONS | | | | | |
| NO. | BY: | DATE: | NO. | BY: | DATE: |
| 1 | | | 3 | | |
| 2 | | | 4 | | |

| | |
|-----------------|----|
| SHEET NO. SI-31 | |
| TOTAL SHEETS | 38 |