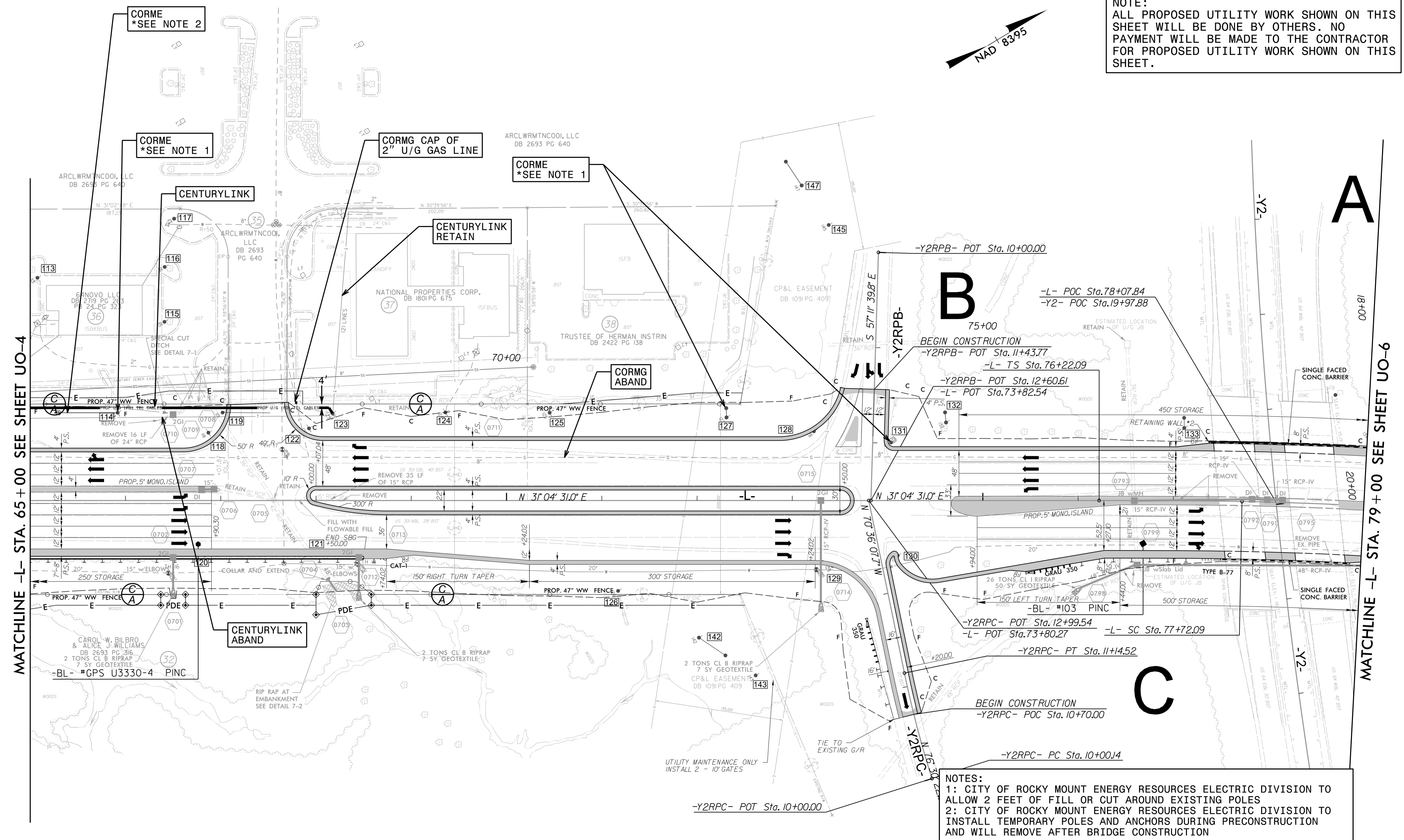
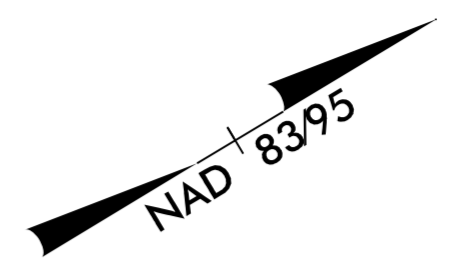


UTILITIES BY OTHERS

NOTE:  
ALL PROPOSED UTILITY WORK SHOWN ON THIS SHEET WILL BE DONE BY OTHERS. NO PAYMENT WILL BE MADE TO THE CONTRACTOR FOR PROPOSED UTILITY WORK SHOWN ON THIS SHEET.



MATCHLINE -L- STA. 65+00 SEE SHEET UO-4

MATCHLINE -L- STA. 79+00 SEE SHEET UO-6

NOTES:  
1: CITY OF ROCKY MOUNT ENERGY RESOURCES ELECTRIC DIVISION TO ALLOW 2 FEET OF FILL OR CUT AROUND EXISTING POLES  
2: CITY OF ROCKY MOUNT ENERGY RESOURCES ELECTRIC DIVISION TO INSTALL TEMPORARY POLES AND ANCHORS DURING PRECONSTRUCTION AND WILL REMOVE AFTER BRIDGE CONSTRUCTION

TRANSITION MEDIAN FROM 30' TO 33'  
-L- STA.73+90.00 TO STA.74+65.00

3/13/2017 10:58:11 AM \\P:\Projects\Engineering\UBO\Pro\U33330\ut\_r.dwg UO05\_psh.dgn