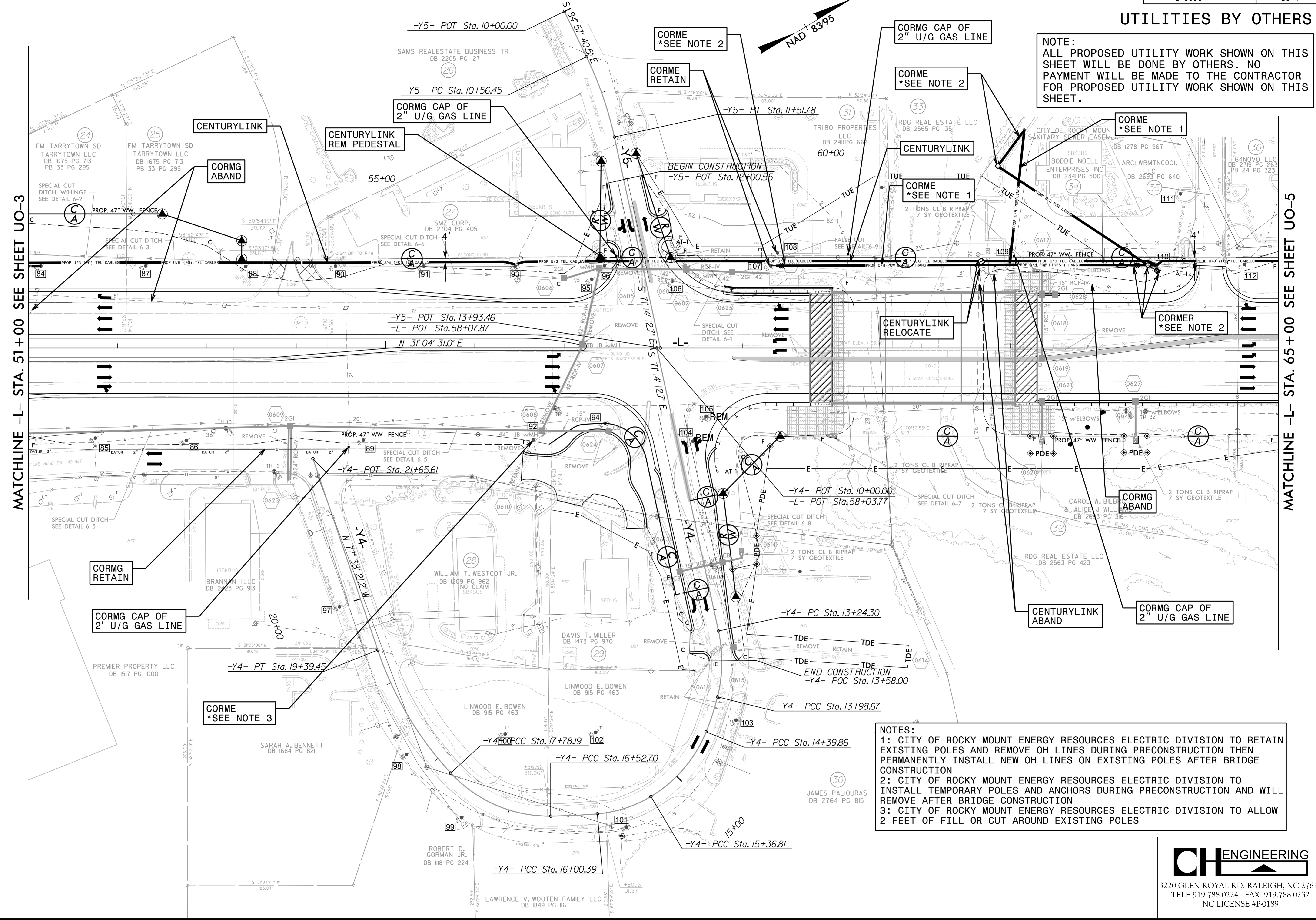


UTILITIES BY OTHERS

NOTE:
ALL PROPOSED UTILITY WORK SHOWN ON THIS SHEET WILL BE DONE BY OTHERS. NO PAYMENT WILL BE MADE TO THE CONTRACTOR FOR PROPOSED UTILITY WORK SHOWN ON THIS SHEET.

MATCHLINE -L- STA. 51+00 SEE SHEET UO-3

MATCHLINE -L- STA. 65+00 SEE SHEET UO-5



NOTES:
 1: CITY OF ROCKY MOUNT ENERGY RESOURCES ELECTRIC DIVISION TO RETAIN EXISTING POLES AND REMOVE OH LINES DURING PRECONSTRUCTION THEN PERMANENTLY INSTALL NEW OH LINES ON EXISTING POLES AFTER BRIDGE CONSTRUCTION
 2: CITY OF ROCKY MOUNT ENERGY RESOURCES ELECTRIC DIVISION TO INSTALL TEMPORARY POLES AND ANCHORS DURING PRECONSTRUCTION AND WILL REMOVE AFTER BRIDGE CONSTRUCTION
 3: CITY OF ROCKY MOUNT ENERGY RESOURCES ELECTRIC DIVISION TO ALLOW 2 FEET OF FILL OR CUT AROUND EXISTING POLES

3/13/2017 10:58:11 AM C:\Users\psh.dgn\Projects\U3330\U3330.dwg UO04.psh.dgn