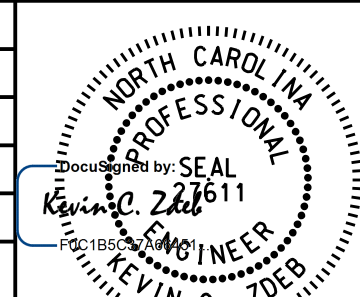
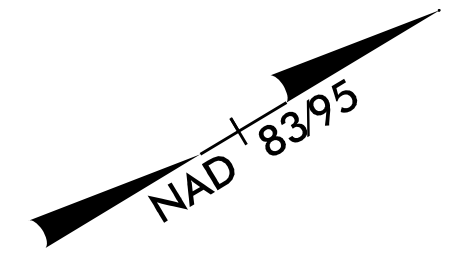


PROJECT REFERENCE NO. U-3330	SHEET NO. UC-7
DESIGNED BY: GJB	
DRAWN BY: GJB	
CHECKED BY: KCZ	
APPROVED BY: KCZ	
REVISED:	
NORTH CAROLINA DEPARTMENT OF TRANSPORTATION	2/22/2017
UTILITIES ENGINEERING SEC. PHONE: (919) 707-6690 FAX: (919) 250-4151	UTILITY CONSTRUCTION PLANS ONLY


UTILITY OWNERS ON THIS PROJECT:

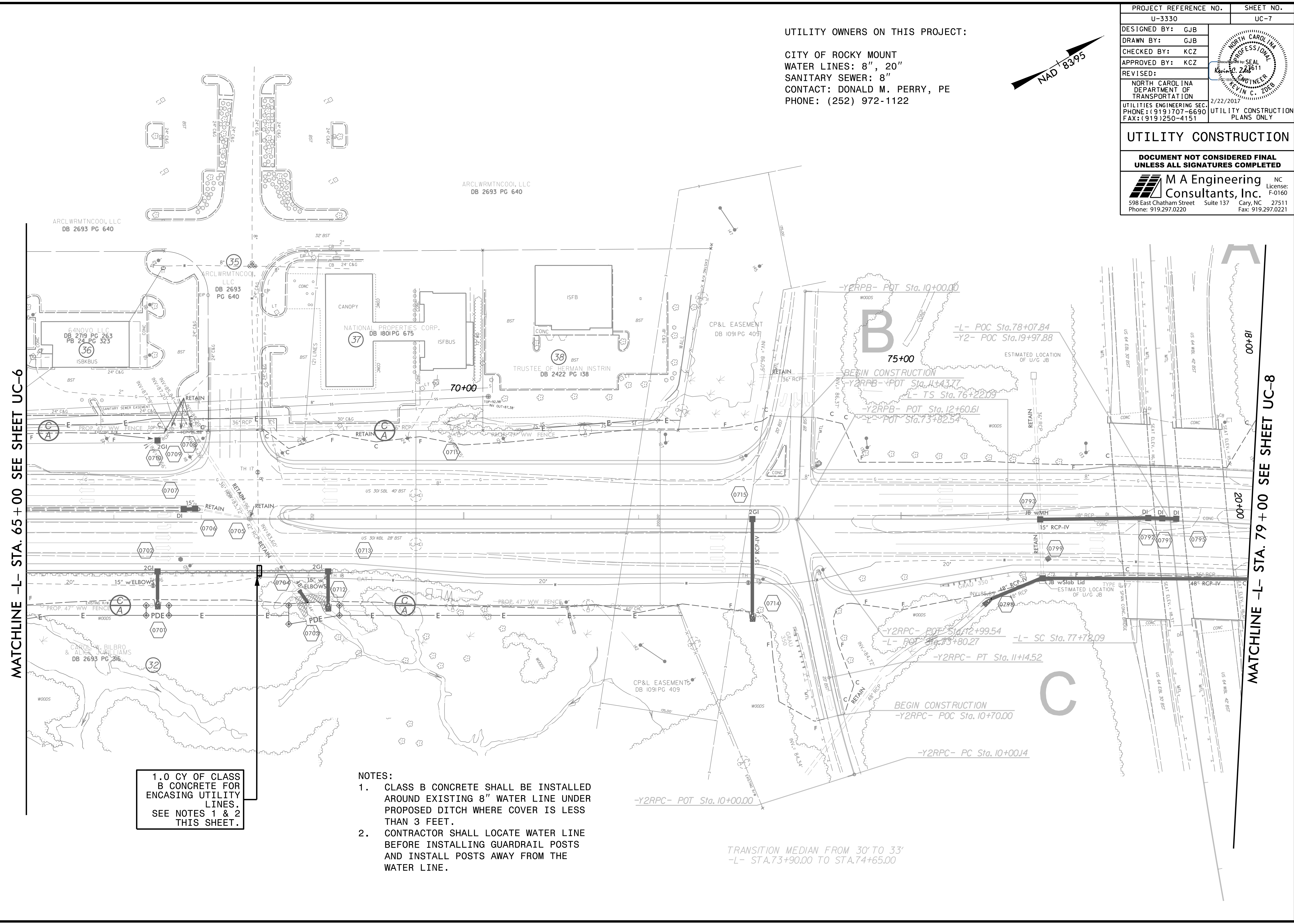
CITY OF ROCKY MOUNT
 WATER LINES: 8", 20"
 SANITARY SEWER: 8"
 CONTACT: DONALD M. PERRY, PE
 PHONE: (252) 972-1122



UTILITY CONSTRUCTION

DOCUMENT NOT CONSIDERED FINAL UNLESS ALL SIGNATURES COMPLETED

 M A Engineering Consultants, Inc. NC License: F-0160
 598 East Chatham Street Suite 137 Cary, NC 27511
 Phone: 919.297.0220 Fax: 919.297.0221



MATCHLINE -L- STA. 65 + 00 SEE SHEET UC-6

MATCHLINE -L- STA. 79 + 00 SEE SHEET UC-8

1.0 CY OF CLASS B CONCRETE FOR ENCASING UTILITY LINES. SEE NOTES 1 & 2 THIS SHEET.

- NOTES:
1. CLASS B CONCRETE SHALL BE INSTALLED AROUND EXISTING 8" WATER LINE UNDER PROPOSED DITCH WHERE COVER IS LESS THAN 3 FEET.
 2. CONTRACTOR SHALL LOCATE WATER LINE BEFORE INSTALLING GUARDRAIL POSTS AND INSTALL POSTS AWAY FROM THE WATER LINE.

TRANSITION MEDIAN FROM 30' TO 33'
 -L- STA. 73+90.00 TO STA. 74+65.00

5/14/17
 0701
 0702
 0703
 0704
 0705
 0706
 0707
 0708
 0709
 0710
 0711
 0712
 0713
 0714
 0715
 0716
 0717
 0718
 0719
 0720
 0721
 0722
 0723
 0724
 0725
 0726
 0727
 0728
 0729
 0730
 0731
 0732
 0733
 0734
 0735
 0736
 0737
 0738
 0739
 0740
 0741
 0742
 0743
 0744
 0745
 0746
 0747
 0748
 0749
 0750
 0751
 0752
 0753
 0754
 0755
 0756
 0757
 0758
 0759
 0760
 0761
 0762
 0763
 0764
 0765
 0766
 0767
 0768
 0769
 0770
 0771
 0772
 0773
 0774
 0775
 0776
 0777
 0778
 0779
 0780
 0781
 0782
 0783
 0784
 0785
 0786
 0787
 0788
 0789
 0790
 0791
 0792
 0793
 0794
 0795
 0796
 0797
 0798
 0799
 0800