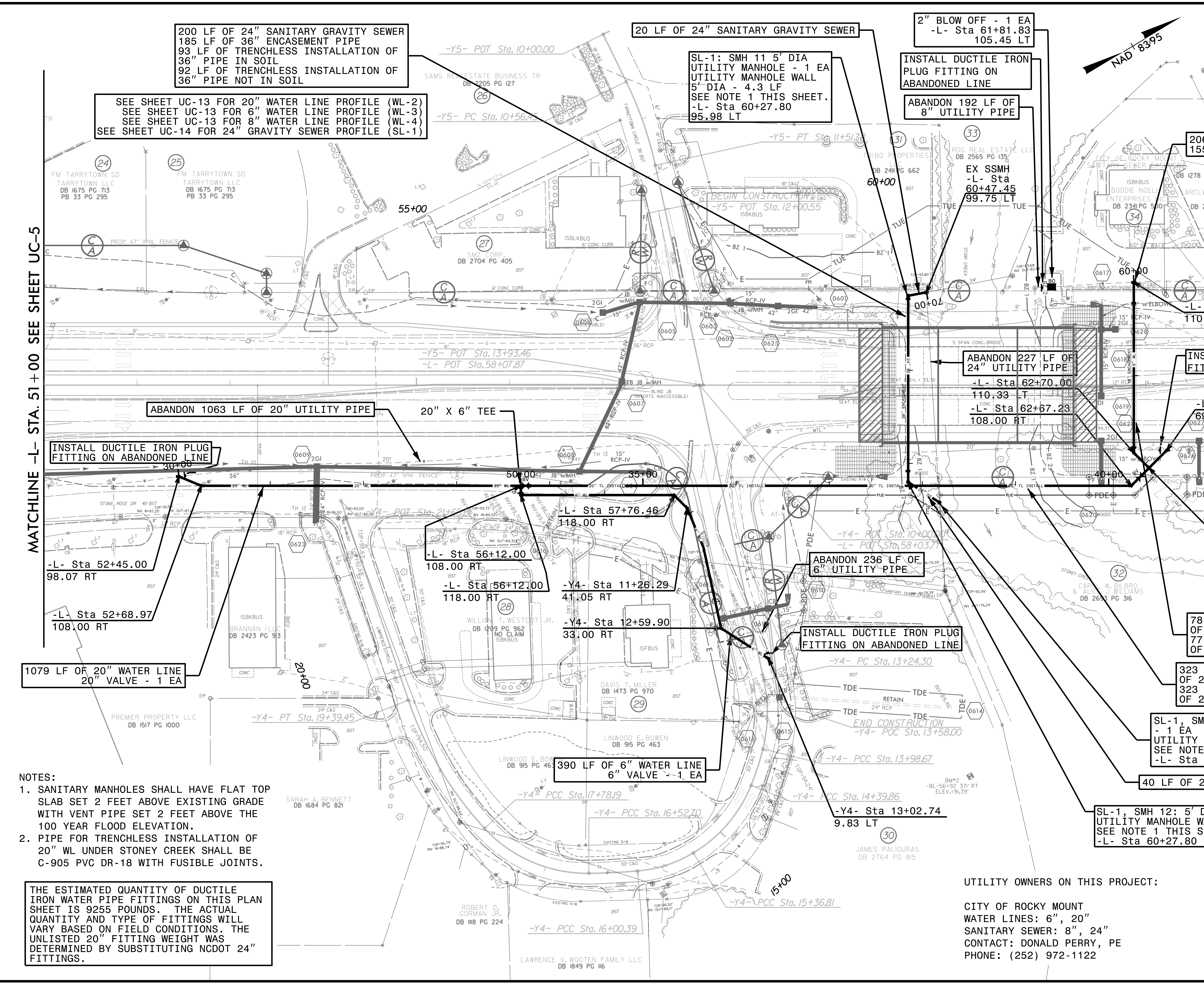


PROJECT REFERENCE NO. U-3330	SHEET NO. UC-6
DESIGNED BY: GJB	
DRAWN BY: GJB	
CHECKED BY: KCZ	
APPROVED BY: KCZ	
REVISER:	DATE: 3/2/2017
NORTH CAROLINA DEPARTMENT OF TRANSPORTATION UTILITIES ENGINEERING SECTION PHONE: (919) 707-6690 FAX: (919) 250-4151	
UTILITY CONSTRUCTION PLANS ONLY	



200 LF OF 24" SANITARY GRAVITY SEWER
 185 LF OF 36" ENCASEMENT PIPE
 93 LF OF TRENCHLESS INSTALLATION OF 36" PIPE IN SOIL
 92 LF OF TRENCHLESS INSTALLATION OF 36" PIPE NOT IN SOIL

SEE SHEET UC-13 FOR 20" WATER LINE PROFILE (WL-2)
 SEE SHEET UC-13 FOR 6" WATER LINE PROFILE (WL-3)
 SEE SHEET UC-13 FOR 8" WATER LINE PROFILE (WL-4)
 SEE SHEET UC-14 FOR 24" GRAVITY SEWER PROFILE (SL-1)

20 LF OF 24" SANITARY GRAVITY SEWER

SL-1: SMH 11 5' DIA UTILITY MANHOLE - 1 EA
 UTILITY MANHOLE WALL 5' DIA - 4.3 LF
 SEE NOTE 1 THIS SHEET.
 -L- Sta 60+27.80 95.98 LT

2" BLOW OFF - 1 EA
 -L- Sta 61+81.83 105.45 LT

INSTALL DUCTILE IRON PLUG FITTING ON ABANDONED LINE

ABANDON 192 LF OF 8" UTILITY PIPE

206 LF OF 8" WATER LINE
 155 LF OF 16" ENCASEMENT PIPE

MATCHLINE -L- STA. 51+00 SEE SHEET UC-5

MATCHLINE -L- STA. 65+00 SEE SHEET UC-7

INSTALL DUCTILE IRON PLUG FITTING ON ABANDONED LINE

-L- Sta 52+45.00 98.07 RT

-L- Sta 52+68.97 108.00 RT

1079 LF OF 20" WATER LINE
 20" VALVE - 1 EA

- NOTES:
- SANITARY MANHOLES SHALL HAVE FLAT TOP SLAB SET 2 FEET ABOVE EXISTING GRADE WITH VENT PIPE SET 2 FEET ABOVE THE 100 YEAR FLOOD ELEVATION.
 - PIPE FOR TRENCHLESS INSTALLATION OF 20" WL UNDER STONEY CREEK SHALL BE C-905 PVC DR-18 WITH FUSIBLE JOINTS.

THE ESTIMATED QUANTITY OF DUCTILE IRON WATER PIPE FITTINGS ON THIS PLAN SHEET IS 9255 POUNDS. THE ACTUAL QUANTITY AND TYPE OF FITTINGS WILL VARY BASED ON FIELD CONDITIONS. THE UNLISTED 20" FITTING WEIGHT WAS DETERMINED BY SUBSTITUTING NCDOT 24" FITTINGS.

ABANDON 1063 LF OF 20" UTILITY PIPE

-L- Sta 56+12.00 108.00 RT

-L- Sta 56+12.00 118.00 RT

390 LF OF 6" WATER LINE
 6" VALVE - 1 EA

ABANDON 236 LF OF 6" UTILITY PIPE

INSTALL DUCTILE IRON PLUG FITTING ON ABANDONED LINE

-Y4- PC Sta. 13+24.30

-Y4- PCC Sta. 13+98.67

-Y4- Sta 13+02.74 9.83 LT

ABANDON 227 LF OF 24" UTILITY PIPE
 -L- Sta 62+70.00 110.33 LT
 -L- Sta 62+67.23 108.00 RT

INSTALL DUCTILE IRON PLUG FITTING ON ABANDONED LINE

-L- Sta 63+05.39 69.83 RT

-L- Sta 62+86.31 88.92 RT

78 LF OF TRENCHLESS INSTALLATION OF 16" PIPE IN SOIL
 77 LF OF TRENCHLESS INSTALLATION OF 16" PIPE NOT IN SOIL

323 LF OF TRENCHLESS INSTALLATION OF 20" PIPE IN SOIL
 323 LF OF TRENCHLESS INSTALLATION OF 20" PIPE NOT IN SOIL

SL-1, SMH 13: 5' DIA UTILITY MANHOLE - 1 EA
 UTILITY MANHOLE WALL 5' DIA - 4.3 LF
 SEE NOTE 1 THIS SHEET.
 -L- Sta 60+61.28 125.91 RT

40 LF OF 24" SANITARY GRAVITY SEWER

SL-1, SMH 12: 5' DIA UTILITY MANHOLE - 1 EA
 UTILITY MANHOLE WALL 5' DIA - 4.3 LF
 SEE NOTE 1 THIS SHEET.
 -L- Sta 60+27.80 104.02 RT

UTILITY OWNERS ON THIS PROJECT:

CITY OF ROCKY MOUNT
 WATER LINES: 6", 20"
 SANITARY SEWER: 8", 24"
 CONTACT: DONALD PERRY, PE
 PHONE: (252) 972-1122

UTILITY CONSTRUCTION

DOCUMENT NOT CONSIDERED FINAL
 UNLESS ALL SIGNATURES COMPLETED

M A Engineering Consultants, Inc.
 598 East Chatham Street Suite 137 Cary, NC 27511
 Phone: 919.297.0220 Fax: 919.297.0221