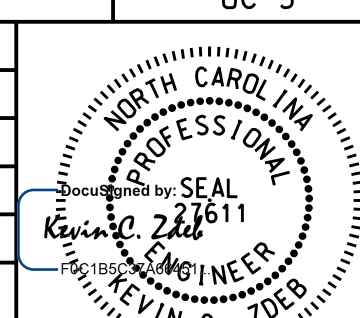


PROJECT REFERENCE NO. U-3330	SHEET NO. UC-5
DESIGNED BY: GJB	 NORTH CAROLINA PROFESSIONAL ENGINEER KEVIN C. ZICK No. 22861 Exp. 3/2/2017
DRAWN BY: GJB	
CHECKED BY: KCZ	
APPROVED BY: KCZ	
REVISER:	NORTH CAROLINA DEPARTMENT OF TRANSPORTATION 3/2/2017 UTILITIES ENGINEERING SEC. PHONE: (919) 707-6690 FAX: (919) 250-4151
UTILITY CONSTRUCTION PLANS ONLY	

UTILITY OWNERS ON THIS PROJECT:

CITY OF ROCKY MOUNT
 WATER LINES: 12", 16", 24"
 SANITARY SEWER: 8"
 CONTACT: DONALD M. PERRY, PE
 PHONE: (252) 972-1122

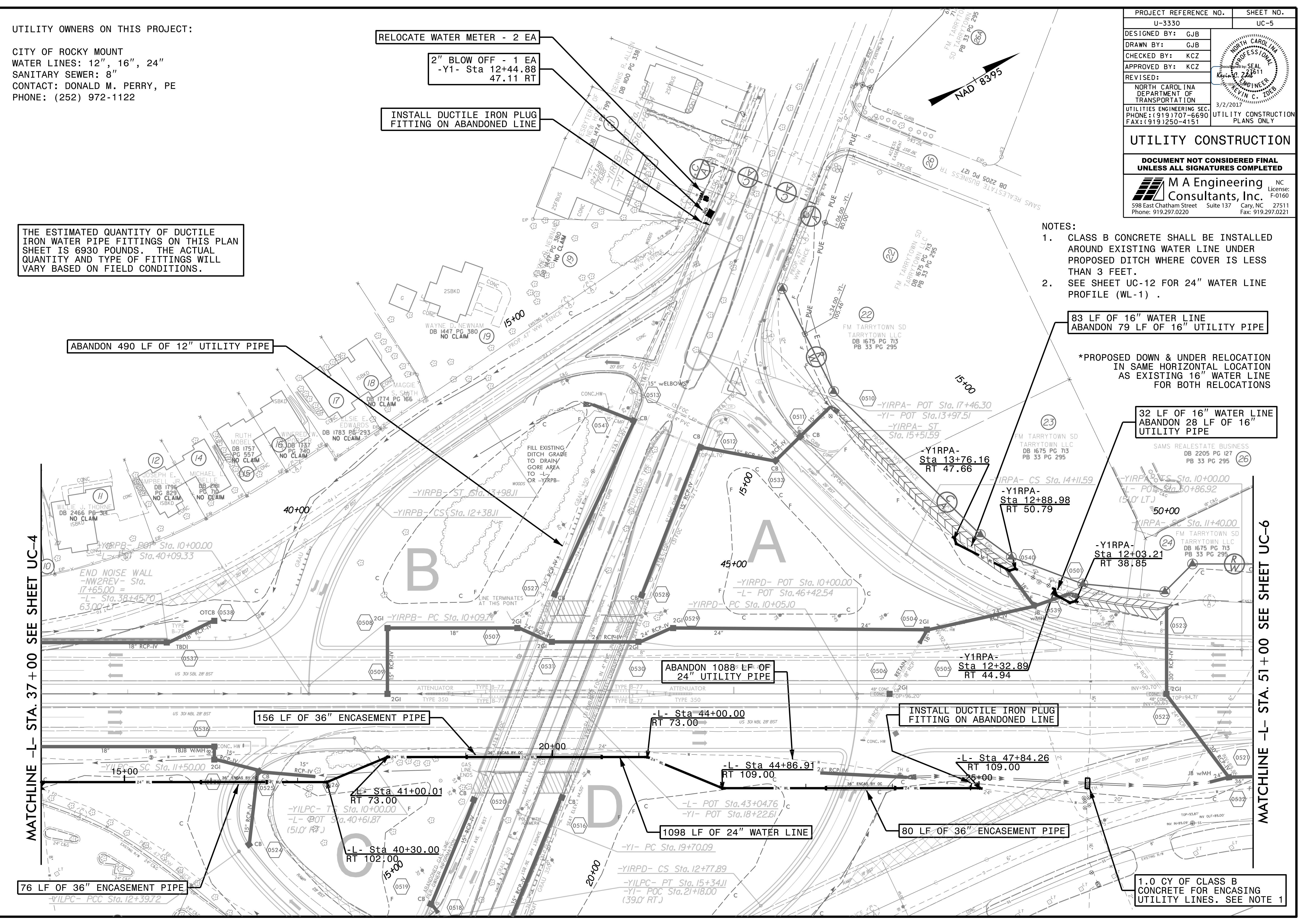
THE ESTIMATED QUANTITY OF DUCTILE IRON WATER PIPE FITTINGS ON THIS PLAN SHEET IS 6930 POUNDS. THE ACTUAL QUANTITY AND TYPE OF FITTINGS WILL VARY BASED ON FIELD CONDITIONS.

UTILITY CONSTRUCTION

DOCUMENT NOT CONSIDERED FINAL UNLESS ALL SIGNATURES COMPLETED

M A Engineering Consultants, Inc.
 NC License: F-0160
 598 East Chatham Street Suite 137 Cary, NC 27511
 Phone: 919.297.0220 Fax: 919.297.0221

- NOTES:
- CLASS B CONCRETE SHALL BE INSTALLED AROUND EXISTING WATER LINE UNDER PROPOSED DITCH WHERE COVER IS LESS THAN 3 FEET.
 - SEE SHEET UC-12 FOR 24" WATER LINE PROFILE (WL-1).



83 LF OF 16" WATER LINE
 ABANDON 79 LF OF 16" UTILITY PIPE

*PROPOSED DOWN & UNDER RELOCATION IN SAME HORIZONTAL LOCATION AS EXISTING 16" WATER LINE FOR BOTH RELOCATIONS

32 LF OF 16" WATER LINE
 ABANDON 28 LF OF 16" UTILITY PIPE

ABANDON 1088 LF OF
 24" UTILITY PIPE

INSTALL DUCTILE IRON PLUG
 FITTING ON ABANDONED LINE

1098 LF OF 24" WATER LINE

80 LF OF 36" ENCASEMENT PIPE

1.0 CY OF CLASS B
 CONCRETE FOR ENCASEMENT
 UTILITY LINES. SEE NOTE 1

76 LF OF 36" ENCASEMENT PIPE

156 LF OF 36" ENCASEMENT PIPE

MATCHLINE -L- STA. 37+00 SEE SHEET UC-4

MATCHLINE -L- STA. 51+00 SEE SHEET UC-6