

5/14/1999
1
2
3
4
5
6
7
8
9
10
11
12
13
14
15
16
17
18
19
20
21
22
23
24
25
26
27
28
29
30
31
32
33
34
35
36
37
38
39
40
41
42
43
44
45
46
47
48
49
50
51
52
53
54
55
56
57
58
59
60
61
62
63
64
65
66
67
68
69
70
71
72
73
74
75
76
77
78
79
80
81
82
83
84
85
86
87
88
89
90
91
92
93
94
95
96
97
98
99
100

THE ESTIMATED QUANTITY OF DUCTILE IRON WATER PIPE FITTINGS ON THIS PLAN SHEET IS 4395 POUNDS. THE ACTUAL QUANTITY AND TYPE OF FITTINGS WILL VARY BASED ON FIELD CONDITIONS.

UTILITY OWNERS ON THIS PROJECT:
CITY OF ROCKY MOUNT
WATER LINES: 2", 6", 8", 24"
SANITARY SEWER: 12", 18"
CONTACT: DONALD M. PERRY, PE
PHONE: (252) 972-1122



PROJECT REFERENCE NO. U-3330	SHEET NO. UC-4
DESIGNED BY: GJB	
DRAWN BY: GJB	
CHECKED BY: KCZ	
APPROVED BY: KCZ	
REVISER:	NORTH CAROLINA DEPARTMENT OF TRANSPORTATION UTILITIES ENGINEERING SEC. PHONE: (919) 707-6690 FAX: (919) 250-4151
UTILITY CONSTRUCTION PLANS ONLY	

- NOTES:
- CONTRACTOR SHALL LOCATE CUSTOMER SERVICE LINE AND PROVIDE EXTENSION TO RELOCATED WATER METER.
 - SEE SHEET UC-12 FOR 24" WATER LINE PROFILE (WL-1).

UTILITY CONSTRUCTION

DOCUMENT NOT CONSIDERED FINAL UNLESS ALL SIGNATURES COMPLETED

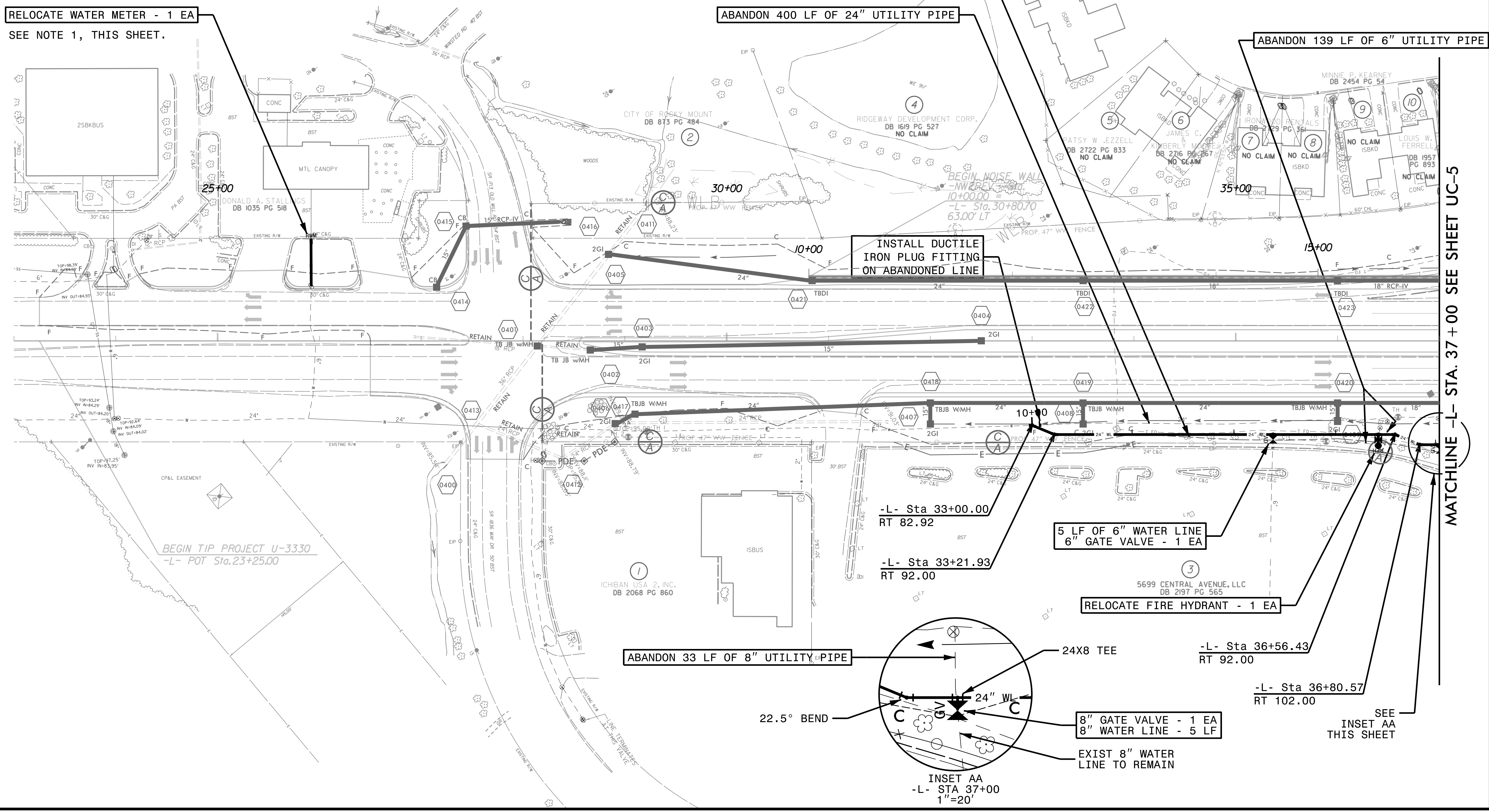
M A Engineering Consultants, Inc.
 NC License: F-0160
 598 East Chatham Street Suite 137 Cary, NC 27511
 Phone: 919.297.0220 Fax: 919.297.0221

RELOCATE WATER METER - 1 EA
SEE NOTE 1, THIS SHEET.

404 LF OF 24" WATER LINE

ABANDON 400 LF OF 24" UTILITY PIPE

ABANDON 139 LF OF 6" UTILITY PIPE

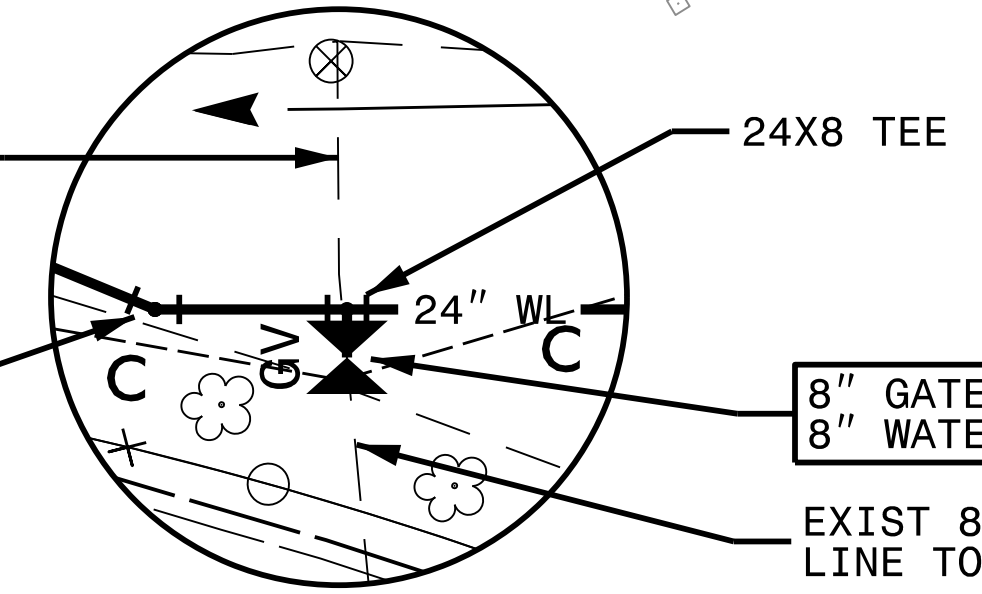


INSTALL DUCTILE IRON PLUG FITTING ON ABANDONED LINE

5 LF OF 6" WATER LINE
6" GATE VALVE - 1 EA

RELOCATE FIRE HYDRANT - 1 EA

ABANDON 33 LF OF 8" UTILITY PIPE



INSET AA
-L- STA 37+00
1"=20'

SEE INSET AA THIS SHEET

MATCHLINE -L- STA. 37 + 00 SEE SHEET UC-5