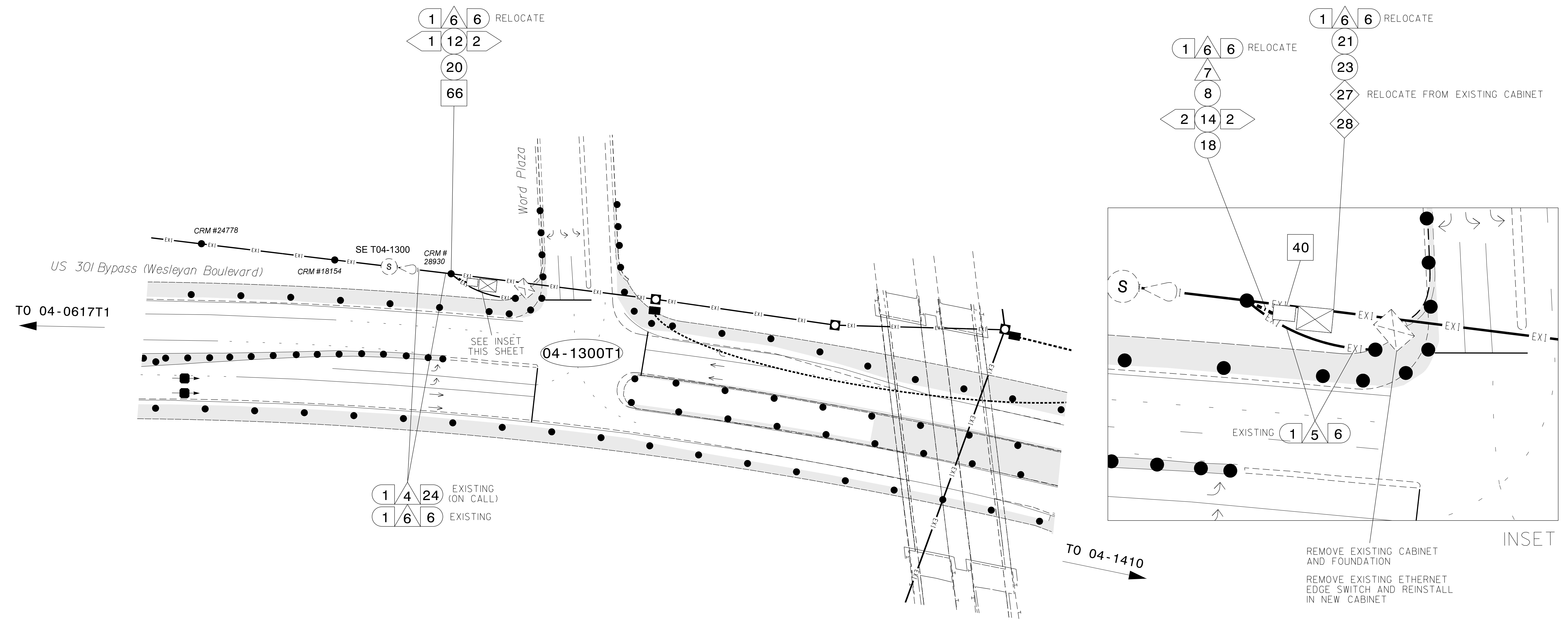


CABINET LOCATION FROM TEMPORARY DESIGN I AREA 3 TMP, PHASES I & II THROUGH FINAL



- NOTES:
1. UNLESS OTHERWISE NOTED:
- OVERLASH NEW FIBER OPTIC CABLE TO EXISTING COMMUNICATIONS CABLE.
- ATTACH NEW MESSENGER CABLE 40" BELOW POWER.
- ATTACH ON FRONT SIDE (FS) OF POLE.
2. SEAL ALL CONDUIT ENDS WITH DUCT AND CONDUIT SEALER, AT ALL JUNCTION BOX / CABINET ENTRANCES.
3. EXISTING (ON-CALL) DENOTES FO CABLE INSTALLED BY DIVISION 4 ON-CALL CONTRACTOR PRIOR TO CONSTRUCTION.

SEE TRANSPORTATION MANAGEMENT PLAN (TMP) AREA 3, PHASES I & II

TMP Area 3 Phases I & II

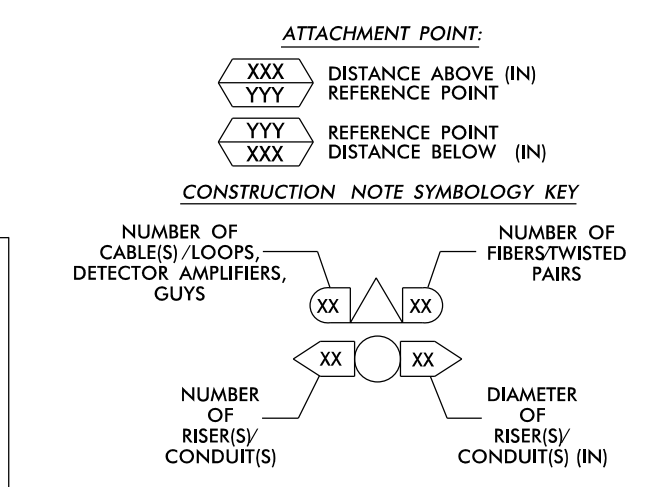


Table with 6 columns and 12 rows of numbered callouts (1-71) and their corresponding descriptions for cable installation and equipment removal.

Project information block including the Atkins logo, project name 'US 301 Widening Cable Routing Plan', plan date (January 2017), and a professional seal for J. Todd Brooks.

30-Jan-2017 15:27
D:\projects\atkins\cmt\tr\off\c\cur\100052135\_U-3330\_S1\cmt\l\sm\04\_CRM\temp\ar\y\SCP-25.dgn
WILE2054 AT DUS300019