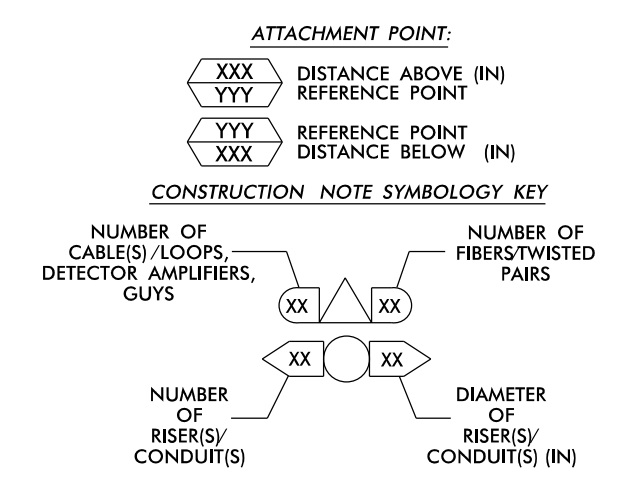


SEE TRANSPORTATION MANAGEMENT PLAN (TMP) AREA I, PHASE II

TMP Area 1, Phase II

- NOTES:**
- UNLESS OTHERWISE NOTED:
 - OVERLASH NEW FIBER OPTIC CABLE TO EXISTING COMMUNICATIONS CABLE.
 - ATTACH NEW MESSENGER CABLE 40" BELOW POWER.
 - ATTACH ON FRONT SIDE (FS) OF POLE.
 - SEAL ALL CONDUIT ENDS WITH DUCT AND CONDUIT SEALER, AT ALL JUNCTION BOX / CABINET ENTRANCES.
 - EXISTING (ON-CALL) DENOTES FO CABLE INSTALLED BY DIVISION 4 ON-CALL CONTRACTOR PRIOR TO CONSTRUCTION.

1. INSTALL COMPOSITE CCTV CABLE	13. INSTALL HEAT SHRINK TUBING RETROFIT KIT	25. INSTALL NEW RISER INTO POLE MOUNTED CABINET	37. INSTALL CCTV WOOD POLE (60')	49. REMOVE EXISTING COMMUNICATIONS CABLE	61. REMOVE EXISTING CCTV CAMERA ASSEMBLY
2. INSTALL 3 WIRE FEEDER CONDUCTORS	14. INSTALL HIGH DENSITY POLYETHYLENE CONDUIT	26. INSTALL DIGITAL VIDEO ENCODER	38. INSTALL STANDARD SIZE JUNCTION BOX	50. INSTALL WIRELESS DSL	62. NEW CABINET ENTRANCE INTO NEW FOUNDATION
3. INSTALL CATEGORY 5E CABLE	15. DIRECTIONAL DRILL CONDUIT	27. INSTALL NEW ETHERNET EDGE SWITCH IN CABINET	39. INSTALL SPECIAL-SIZED JUNCTION BOX	51. INSTALL CABLE STORAGE GUIDE(S) [SNOW SHOE(S)] AND STORE 100 FEET OF EACH CABLE	63. DRILL/CORE DRILL EXISTING FOUNDATION
4. INSTALL SMFO CABLE	16. BORE AND JACK CONDUIT	28. INSTALL INTERCONNECT CENTER PATCH PANEL JUMPERS, AND FUSION SPlice CABLE IN CABINET	40. INSTALL OVER-SIZED JUNCTION BOX	52. INSTALL DELINEATOR MARKER	64. INTERCEPT AND REROUTE EXISTING CONDUITS
5. BACK-PULL EXIST SMFO CABLE	17. INSTALL CABLE(S) IN EXISTING CONDUIT	29. INSTALL UNDERGROUND SPlice ENCLOSURE	41. REMOVE EXISTING JUNCTION BOX	53. STORE 50 FEET OF COMMUNICATIONS CABLE (EACH CABLE)	65. BOND MESSENGER TO POLE GROUND
6. INSTALL FIBER-OPTIC DROP CABLE	18. INSTALL CABLE(S) IN NEW CONDUIT	30. INSTALL AERIAL SPlice ENCLOSURE	42. INSTALL WOOD POLE (50')	54. LASH CABLE(S) TO EXISTING SIGNAL/COMMUNICATIONS CABLE	66. BOND RISER TO POLE GROUND
7. INSTALL TRACER WIRE	19. INSTALL CABLE(S) IN EXISTING RISER(S)	31. INSTALL SPlice CABINET	43. REMOVE EXISTING WOOD POLE	55. LASH CABLE(S) TO EXISTING MESSENGER CABLE	67. BOND TRACER WIRE TO EQUIPMENT GROUND BUS
8. TRENCH CONDUIT	20. INSTALL CABLE(S) IN NEW RISER(S)	32. MODIFY EXISTING SPlice ENCLOSURE OR INTERCONNECT CENTER	44. INSTALL AERIAL GUY ASSEMBLY	56. LASH CABLE(S) TO NEW MESSENGER CABLE	68. BOND TRACER WIRE TO POLE GROUND
9. INSTALL PVC CONDUIT	21. INSTALL CABLE(S) IN EXISTING CABINET ENTRANCE	33. REMOVE EXISTING SPlice / HUB / CCTV CABINET	45. INSTALL STANDARD GUY ASSEMBLY	57. MODIFY EXISTING ELECTRICAL SERVICE FOR CCTV	69. INSTALL MANAGED ETHERNET SWITCH
10. INSTALL RIGID, GALVANIZED STEEL CONDUIT	22. INSTALL NEW CONDUIT INTO CABINET BASE (USE EX CABINET ENTRANCE WHEN AVAILABLE)	34. INSTALL CABINET FOUNDATION	46. INSTALL SIDEWALK GUY ASSEMBLY	58. INSTALL NEW ELECTRICAL SERVICE FOR CCTV	70. INSTALL CCTV METAL POLE & FOUNDATION
11. INSTALL RIGID, GALVANIZED STEEL RISER WITH WEATHERHEAD	23. INSTALL NEW RISER INTO CABINET BASE (USE EX CABINET ENTRANCE WHEN AVAILABLE)	35. REMOVE EXISTING CABINET FOUNDATION	47. INSTALL MESSENGER CABLE	59. INSTALL NEW POLE MOUNTED CCTV CABINET (336)	71. INSTALL DISCONNECT ON CCTV POLE
12. INSTALL RIGID, GALVANIZED STEEL RISER WITH HEAT SHRINK TUBING	24. INSTALL NEW CONDUIT INTO POLE MOUNTED CABINET	36. INSTALL CCTV CAMERA ASSEMBLY	48. REMOVE EXISTING COMMUNICATIONS CABLE AND MESSENGER CABLE	60. REMOVE EXISTING METAL CCTV POLE AND FOUNDATION	



ATKINS 1616 EAST MILLBROOK ROAD, SUITE 310
 RALEIGH, NORTH CAROLINA 27609
 (919) 876-6888 NCBEEES #F-0326

DOCUMENT NOT CONSIDERED FINAL UNLESS ALL SIGNATURES COMPLETED

Prepared for the Offices of:
 TRANSPORTATION MOBILITY AND SAFETY DIVISION
 STATE OF NORTH CAROLINA
 STATE DESIGN SECTION
 750 N. Greenfield Pkwy, Garner, NC 27529

US 301 Widening Cable Routing Plan

Division 4 Nash County Rocky Mount

PLAN DATE: January 2017 REVIEWED BY: JT Brooks

PREPARED BY: JA Wiles REVIEWED BY:

REVISIONS	INIT.	DATE

SCALE: 0 50 1"=50'

DocuSign by: 1/30/2017
 SEAL: NORTH CAROLINA PROFESSIONAL ENGINEER SEAL 017586
 J. TODD BROOKS
 CADD File name: SCP-12.dgn

30-Jan-2017 15:27 D:\projects\scop12\scop12.dwg U-3330 S:\gms\scop12\scop12.dwg AT D:\US3300119