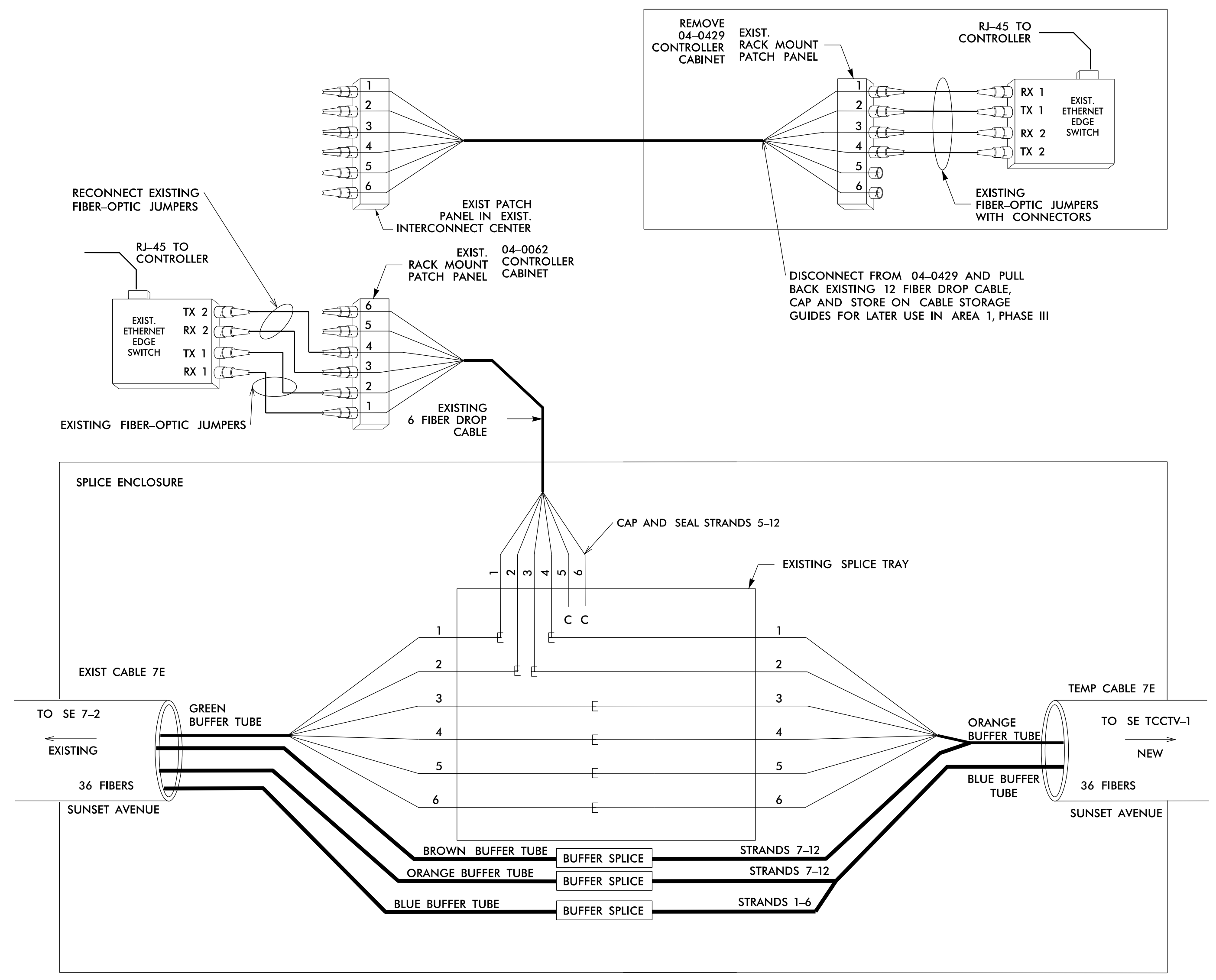


### SPLICE ENCLOSURE NO.

T04-0062



NOTE: MATCH CABLE NUMBER TO CORRESPONDING CABLE DESTINATION TO DETERMINE CORRECT DIAGRAM ORIENTATION.

NOTE: USE DURING AREA 1, PHASES I & II OF CONSTRUCTION WHEN SUNSET AVENUE IS TEMPORARILY CLOSED AND DETOURED AT US 301 (WESLEYAN BLVD) AND SIGNAL 04-0429 IS DEACTIVATED AND TEMPORARILY REMOVED.

## TMP Area 1, Phase I

**ATKINS** 1616 EAST MILLBROOK ROAD, SUITE 160  
RALEIGH, NORTH CAROLINA 27609  
(919) 876-6888 NCBES #F-0326

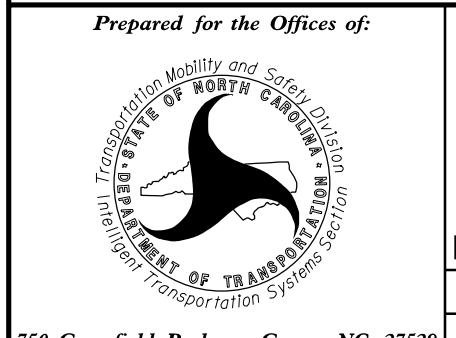
DOCUMENT NOT CONSIDERED FINAL UNLESS ALL SIGNATURES COMPLETED

### LEGEND

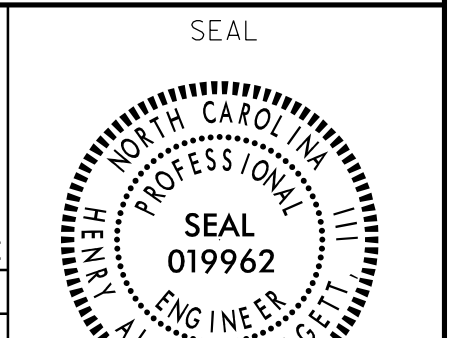
E = EXIST. FUSION SPLICE INDIVIDUAL FIBER	
X = FUSION SPLICE INDIVIDUAL FIBER	
C = CAP AND SEAL	
EXPRESS	EXPRESS ENTIRE BUFFER TUBE / FIBERS THROUGH WITHOUT CUTTING
BUFFER SPLICE	SPLICE ALL FIBERS IN BUFFER TUBE COLOR TO COLOR

### NOTES

- UNUSED FIBERS LEFT COILED AND STORED IN SPLICE TRAY.
- UNUSED BUFFER TUBES LEFT COILED AND STORED IN SPLICE ENCLOSURE.
- EDGE SWITCH CONFIGURATIONS ARE GENERIC. CONTRACTOR IS RESPONSIBLE FOR DETERMINING/ENSURING THE PROPER TERMINATIONS.
- TWO (2) WEEKS PRIOR TO BEGINNING WORK ON THE SIGNAL SYSTEM, CONTACT THE CITY OF ROCKY MOUNT SENIOR SIGNAL SYSTEM OPERATOR, MICHAEL WEBB, AT 252-972-1132 TO ARRANGE FOR THE CITY OF ROCKY MOUNT TO PROGRAM THE NEW FIELD ETHERNET SWITCHES WITH THE NECESSARY NETWORK CONFIGURATION DATA, INCLUDING BUT NOT LIMITED TO: THE PROJECT IP ADDRESS, DEFAULT GATEWAY, SUBNET MASK AND VLAN ID INFORMATION. NOTIFY THE SENIOR SIGNAL SYSTEM OPERATOR AFTER ALL WORK IS PERFORMED TO ENSURE THAT ALL FIBER CIRCUITS ARE FUNCTIONING PROPERLY. WORK IS NOT COMPLETE UNTIL THE SIGNAL SYSTEM IS BACK UP AND OPERATIONAL.
- CONTRACTOR TO RECORD EXISTING SPLICE ARRANGEMENT FOR COMPARISON TO THE SUPPLIED SPLICE DETAILS. IF DISCREPANCIES EXIST, CONTACT THE ENGINEER TO DETERMINE HOW TO PROCEED WITH RESPLICING. PROVIDE AS-BUILT PLANS TO THE ENGINEER IF FINAL SPLICE ARRANGED DIFFERS FROM THE SUPPLIED SPLICE DETAILS.
- INCLUDE ON THE COVER OF EACH SPLICE TRAY THE FOLLOWING INFORMATION (SEE STANDARD SPECIFICATIONS ARTICLE 1731-3(A)):
  - SPLICE LOCATION
  - DATE
  - COMPANY NAME
  - NAME OF INDIVIDUAL PERFORMING THE SPLICE
 PRIOR TO INSTALLING THE COVER ON THE SPLICE TRAY, TAKE A DIGITAL PHOTOGRAPH SHOWING THE SPLICE TRAY AND INFORMATION SHOWN ABOVE (ITEMS A-D) AND SUBMIT PHOTOGRAPH ALONG WITH OTDR TEST RESULTS.



US 301 Widening Fiber Optic Temp. Splicing Details		
Division 4	Nash County	Rocky Mount
PLAN DATE: November 2016	REVIEWED BY: HA Badgett	
PREPARED BY: GB Spell	REVIEWED BY: JT Brooks	
REVISIONS	INIT.	DATE



750 Greenfield Parkway, Garner, NC 27529  
N.T.S.

DATE	1/30/2017
DATE	

CADD File name: SCP-09.dgn

30-Jan-2017 15:15  
D:\projects\atkins\04-0062\T04-0062\SCP-09.dgn  
S:\0817232 AT UUSJ40114