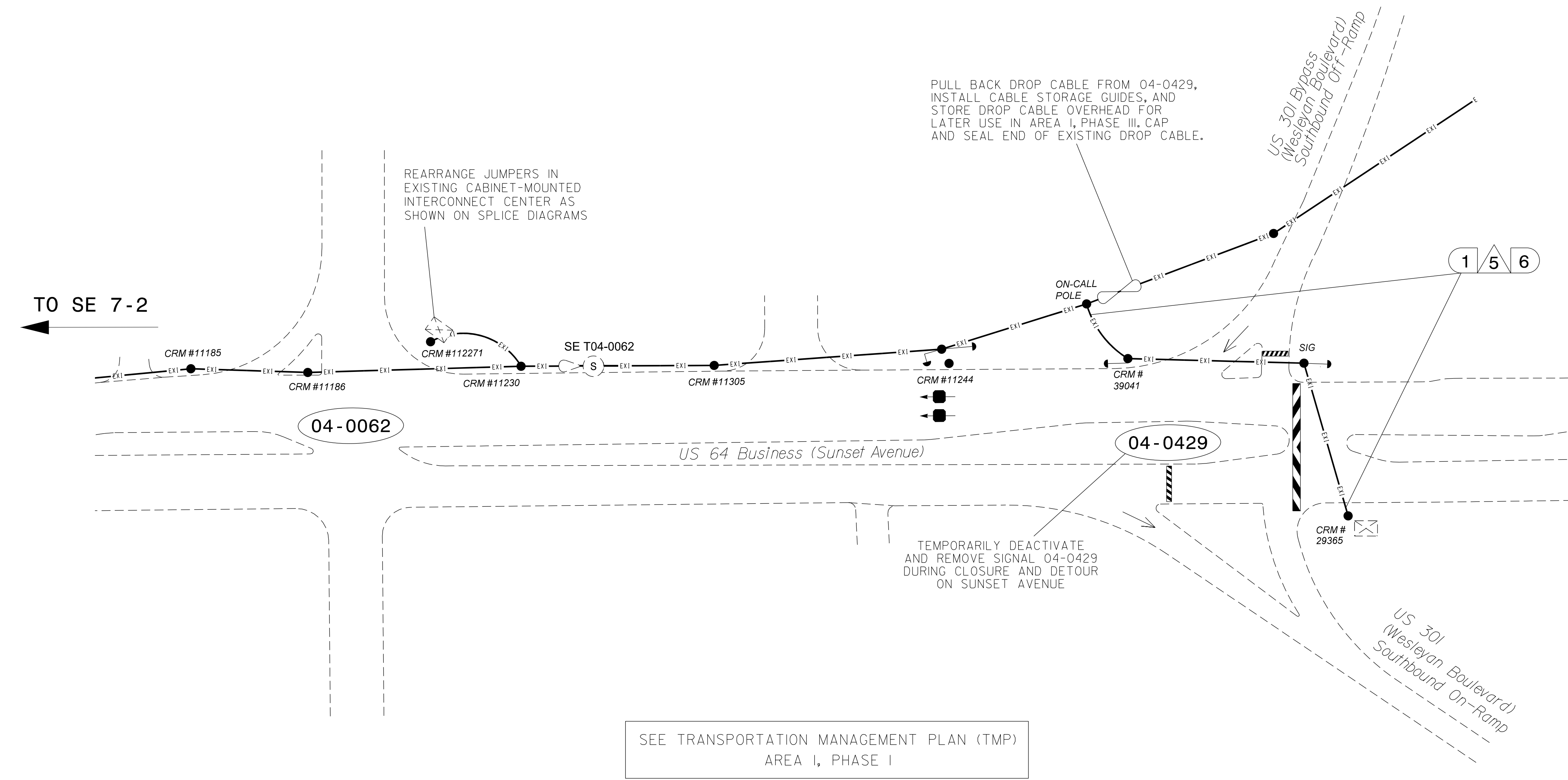


SEE SIGNAL PLAN FOR SYSTEM DETECTOR INSTALLATION/ASSIGNMENT DETAILS. REFER TO "SYSTEM DETECTORS AND CONTROL ZONES" SCHEMATIC. FOR ADDITIONAL INFORMATION.

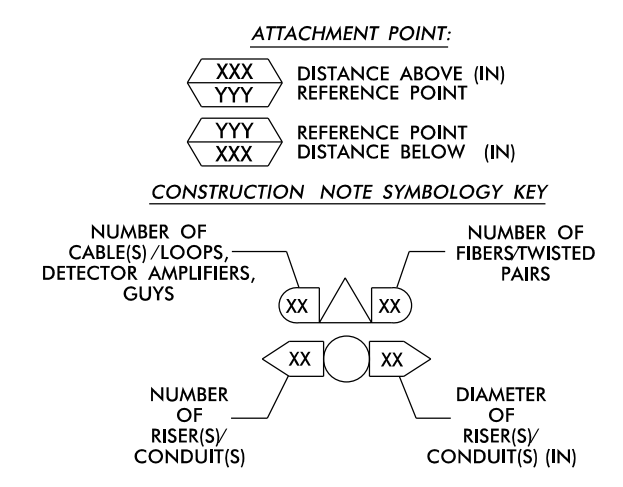


SEE TRANSPORTATION MANAGEMENT PLAN (TMP) AREA I, PHASE I

NOTES:

- 1. UNLESS OTHERWISE NOTED:
- OVERLASH NEW FIBER OPTIC CABLE TO EXISTING COMMUNICATIONS CABLE.
- ATTACH NEW MESSENGER CABLE 40" BELOW POWER.
- ATTACH ON FRONT SIDE (FS) OF POLE.
2. SEAL ALL CONDUIT ENDS WITH DUCT AND CONDUIT SEALER, AT ALL JUNCTION BOX / CABINET ENTRANCES.
3. EXISTING (ON-CALL) DENOTES FO CABLE INSTALLED BY DIVISION 4 ON-CALL CONTRACTOR PRIOR TO CONSTRUCTION.

Table with 12 columns and 12 rows of construction notes, including items like 'INSTALL COMPOSITE CCTV CABLE', 'INSTALL HEAT SHRINK TUBING RETROFIT KIT', 'INSTALL NEW RISER INTO POLE MOUNTED CABINET', etc.



TMP Area 1 Phase I

ATKINS 1616 EAST MILLBROOK ROAD, SUITE 310 RALEIGH, NORTH CAROLINA 27609 (919) 876-6888 NCBEEES #F-0326

Project information block including 'US 301 Widening Cable Routing Plan', 'Division 4 Nash County Rocky Mount', 'PLAN DATE: January 2017', 'REVIEWED BY: JT Brooks', and a professional seal for J. Todd Brooks, Engineer.

30-Jan-2017 15:27 D:\projects\atkins\scps\offices\cur\100052135_U-3330_Signal\04_CRM\temp\cur\y\SCP-08.dgn AT: DUS300019