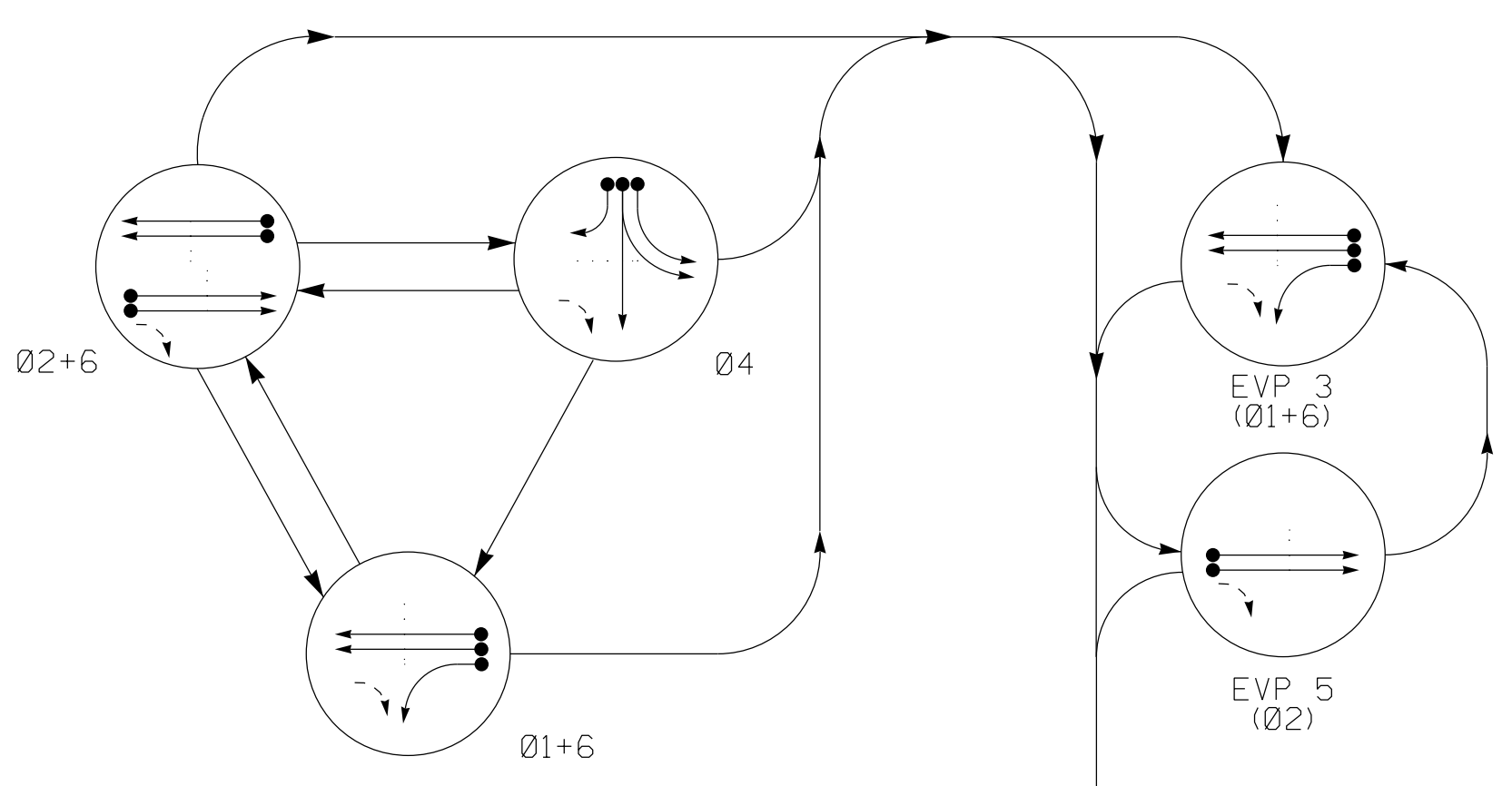


PHASING DIAGRAM



PHASING DIAGRAM DETECTION LEGEND

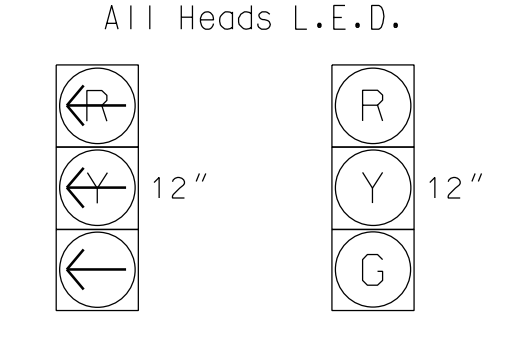
- DETECTED MOVEMENT
UNDETECTED MOVEMENT (OVERLAP)
UNSIGNALIZED MOVEMENT
PEDESTRIAN MOVEMENT

EVP Exit Phase Determined by Vehicle Demand

TABLE OF OPERATION

Table with columns: SIGNAL FACE, PHASE (01+6, 02+6, 04, EVP 3, EVP 4, EVP 5, F, L, H, S, D, B), and rows for signal faces 11, 21, 22, 41, 42, 43, 61, 62.

SIGNAL FACE I.D.



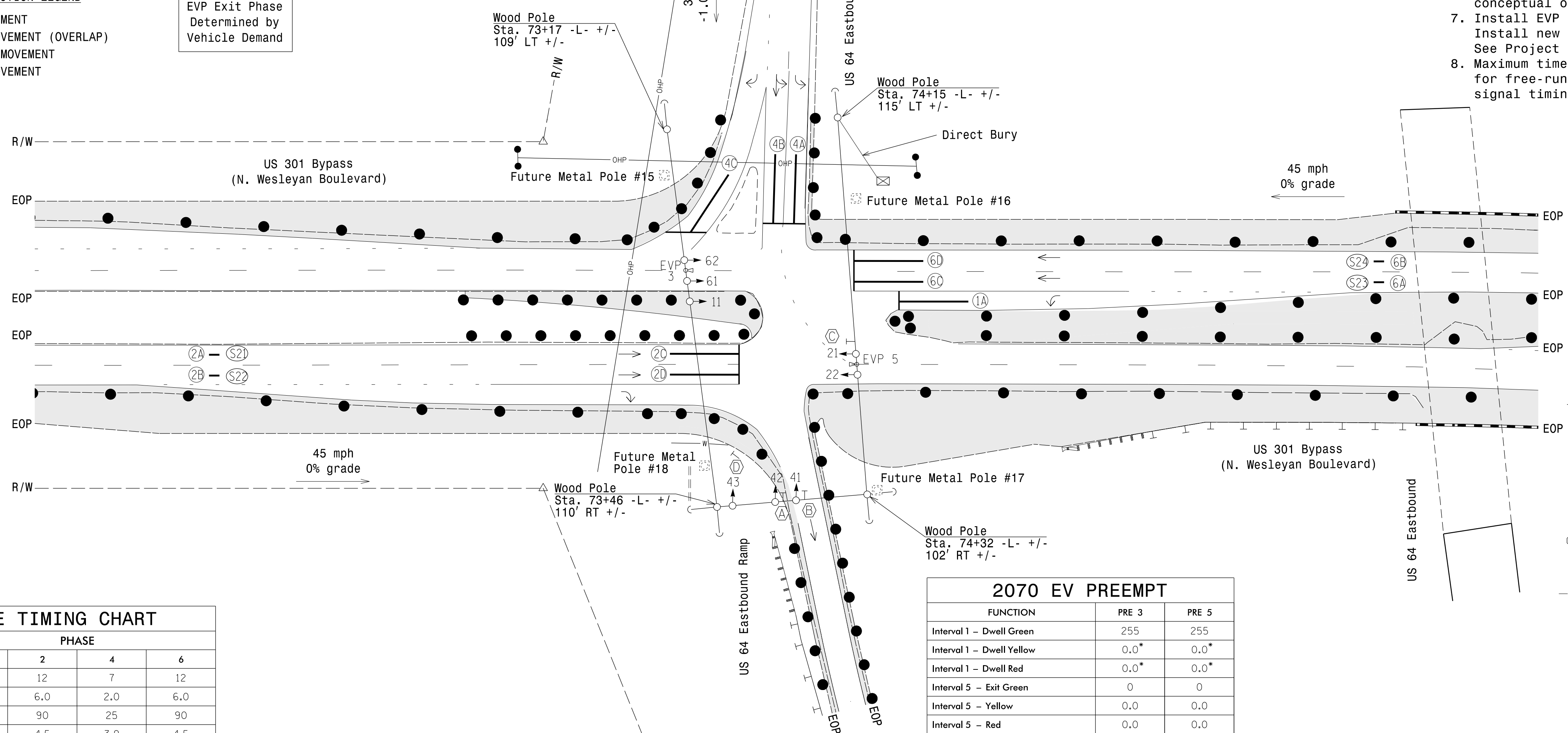
OASIS 2070 LOOP & DETECTOR INSTALLATION CHART

Table with columns: LOOP, SIZE (FT), DISTANCE FROM STOPBAR (FT), TURNS, NEW LOOP, PHASE, CALLING EXTENSION, STRETCH TIME, DELAY TIME, SYSTEM LOOP, NEW CARD. Includes rows for loops 1A through 6D.

3 Phase W/ EV Preempt Fully Actuated Rocky Mount Signal System

NOTES

- 1. Refer to "Roadway Standard Drawings NCDOT" dated January 2012...
2. Do not program signal for late night flashing operation unless otherwise directed by the Engineer.
3. Phase 1 may be lagged.
4. Set all emulator loops to presence mode.
5. Locate new cabinet so as not to obstruct sight distance of vehicles turning right on red.
6. This intersection features an optical preemption system. Shown locations of optical detectors are conceptual only.
7. Install EVP 3 and EVP 5 detectors on new spans. Install new Phase Selectors in signal cabinet. See Project Special Provisions.
8. Maximum times shown in timing charts are for free-run operation only. Coordinated signal timing values supersede these values.



OASIS 2070E TIMING CHART table with columns: FEATURE, PHASE (1, 2, 4, 6) and rows for Min Green, Extension, Max Green, Yellow Clearance, Red Clearance, Red Revert, Walk, Don't Walk, Seconds Per Actuation, Max Variable Initial, Time Before Reduction, Time To Reduce, Minimum Gap, Recall Mode, Vehicle Call Memory, Dual Entry, Simultaneous Gap.

2070 EV PREEMPT table with columns: FUNCTION, PRE 3, PRE 5 and rows for Interval 1 (Dwell Green, Dwell Yellow, Dwell Red), Interval 5 (Exit Green, Yellow, Red), Exit Phase(s), Priority, Delay Time, Min Green Before Pre, Ped Clear Before Pre, Yellow Clear Before Pre, Red Clear Before Pre, Dwell Min Time, Enable Backup Protection, Ped Clear Through Yellow, Omit Overlaps, Preempt Extend**.

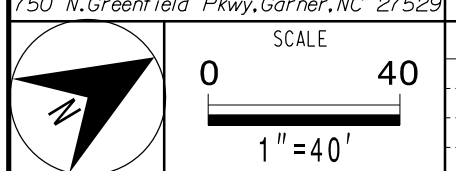
LEGEND table with columns: PROPOSED, EXISTING and rows for Traffic Signal Head, Modified Signal Head, Pedestrian Signal Head, Signal Pole with Guy, Signal Pole with Sidewalk Guy, Inductive Loop Detector, Controller & Cabinet, Junction Box, 2-in Underground Conduit, Right of Way, Directional Arrow, Guardrail, Emergency Vehicle Detector, Combined Through and Left Arrow Sign, Left Arrow ONLY Sign, No Left Turn Sign, YIELD Sign, Construction Zone, Construction Zone Drums, UG Water Line, Drainage Pipe, Overhead Power Line.

DOCUMENT NOT CONSIDERED FINAL UNLESS ALL SIGNATURES COMPLETED

Signal Upgrade - Temporary Design 1 (Area 3 TMP Phase I)

Project information block including logos for North Carolina Department of Transportation and Signal Design Section, project name 'US 301 Byp. (N. Wesleyan Blvd) at US 64 Eastbound Ramps', location 'Division 04 Nash County Rocky Mount', plan date 'November 2016', and a professional seal for Melissa B. Toth, Engineer.

ATKINS 1616 EAST MILLBROOK ROAD, SUITE 160 RALEIGH, NORTH CAROLINA 27609 (919) 876-8888 NOBES #F-0326



30-JAN-2017 17:41 D:\Projects\2017\01\00032135_U-3330_Signal\02_Signal\04-061811.dgn ENCL5986 AT U059021