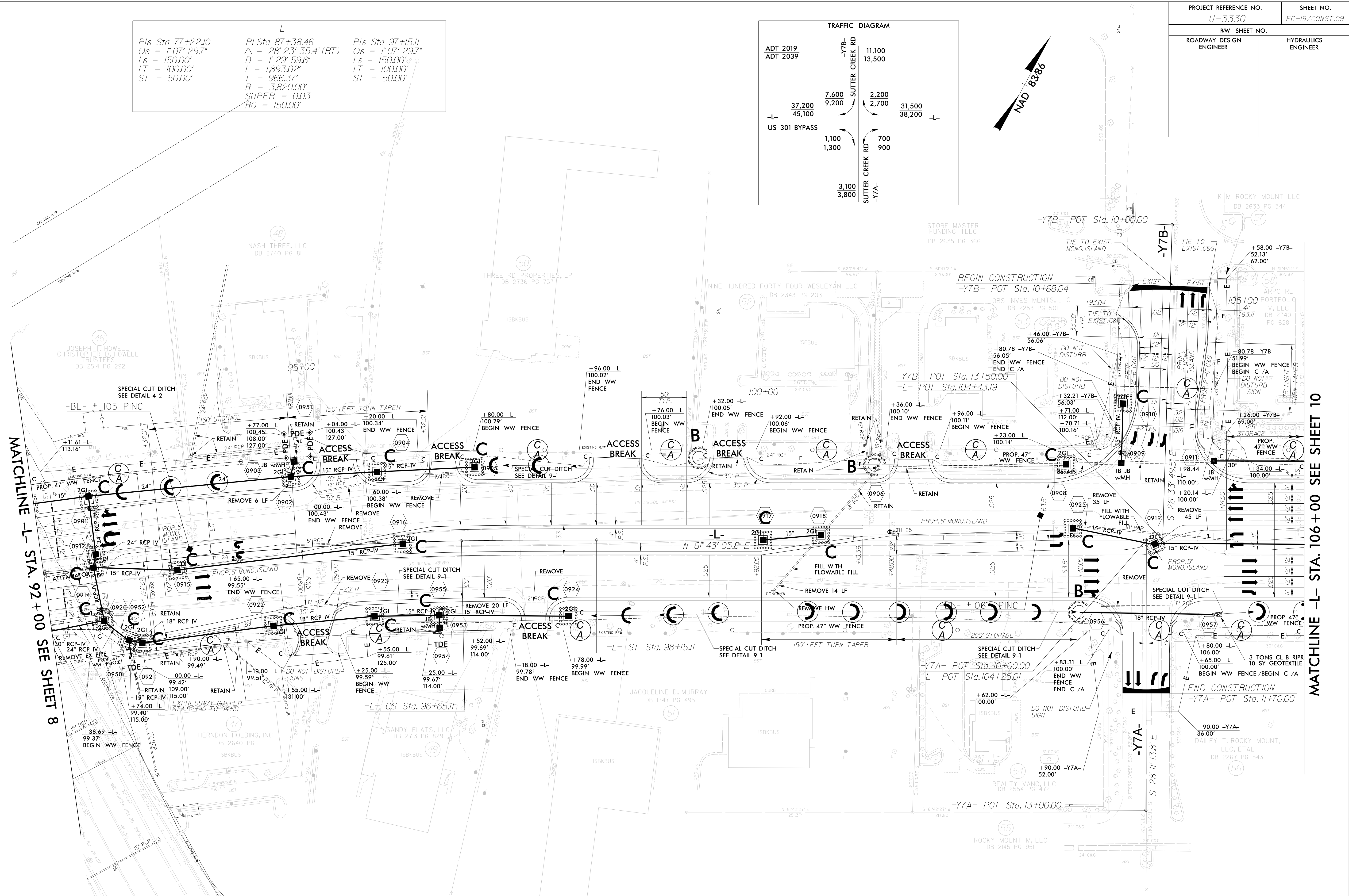
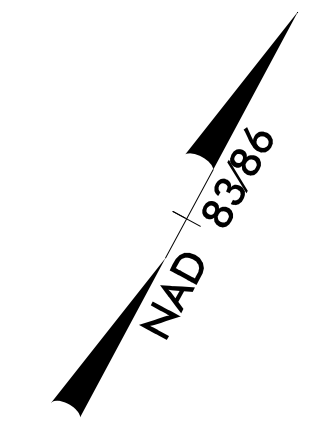
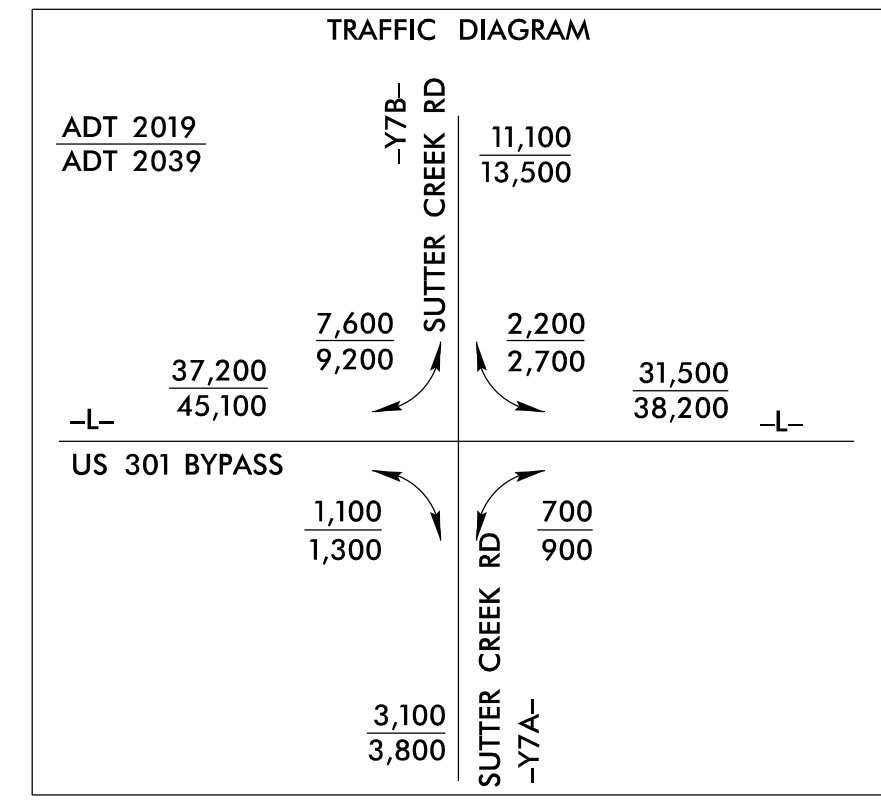


|                         |  |                     |  |
|-------------------------|--|---------------------|--|
| PROJECT REFERENCE NO.   |  | SHEET NO.           |  |
| U-3330                  |  | EC-19/CONST.09      |  |
| RW SHEET NO.            |  |                     |  |
| ROADWAY DESIGN ENGINEER |  | HYDRAULICS ENGINEER |  |

-L-  
 Pls Sta 77+22.0  
 $\Theta_s = 1^{\circ}07'29.7''$   
 $L_s = 150.00'$   
 $LT = 100.00'$   
 $ST = 50.00'$

-L-  
 Pls Sta 87+38.46  
 $\Delta = 28^{\circ}23'35.4''$  (RT)  
 $D = 1^{\circ}29'59.6''$   
 $L = 1,893.02'$   
 $T = 966.37'$   
 $R = 3,820.00'$   
 $SUPER = 0.03$   
 $RO = 150.00'$

-L-  
 Pls Sta 97+15.11  
 $\Theta_s = 1^{\circ}07'29.7''$   
 $L_s = 150.00'$   
 $LT = 100.00'$   
 $ST = 50.00'$



MATCHLINE -L- STA. 92+00 SEE SHEET 8

MATCHLINE -L- STA. 106+00 SEE SHEET 10

DRIVEWAY RADII ARE 25' UNLESS OTHERWISE NOTED

FOR -L- PROFILE SEE SHT.16 & 17  
 FOR -Y7A- & -Y7B- PROFILE SEE SHT.23  
 SEE SHT.2-F FOR DITCH DETAILS  
 SEE SHT.2-I FOR INTERSECTION DETAILS

**MULKEY**  
 ENGINEERS & CONSULTANTS  
 PO Box 33127  
 Raleigh, N.C. 27636  
 (919) 851-9112 FAX  
 WWW.MULKEYINC.COM  
 NC LICENSE NO. C-1021