

PROJECT REFERENCE NO.	SHEET NO.
U-3330	EC-18/CONST.08
RW SHEET NO.	
ROADWAY DESIGN ENGINEER	HYDRAULICS ENGINEER

-Y2RPA-	-L-
Pls Sta 13+22.59 $\Delta = 8^{\circ} 0' 17.1''$ $L_s = 140.00'$ $LT = 93.43'$ $ST = 46.75'$	Pls Sta 16+25.22 $\Delta = 8^{\circ} 0' 17.1''$ $L_s = 140.00'$ $LT = 93.43'$ $ST = 46.75'$
Pls Sta 14+75.37 $\Delta = 23^{\circ} 59' 04.2''$ (RT) $D = 11^{\circ} 27' 33.0''$ $L = 209.30'$ $T = 106.21'$ $R = 500.00'$ SUPER = EXIST.	Pls Sta 77+22.10 $\Delta = 1^{\circ} 07' 29.7''$ $L_s = 150.00'$ $LT = 100.00'$ $ST = 50.00'$
Pls Sta 16+25.22 $\Delta = 8^{\circ} 0' 17.1''$ $L_s = 140.00'$ $LT = 93.43'$ $ST = 46.75'$	Pls Sta 87+38.46 $\Delta = 28^{\circ} 23' 35.4''$ (RT) $D = 1^{\circ} 29' 59.6''$ $L = 1,893.02'$ $T = 966.37'$ $R = 3,820.00'$ SUPER = 0.03 $RO = 150.00'$
Pls Sta 16+25.22 $\Delta = 8^{\circ} 0' 17.1''$ $L_s = 140.00'$ $LT = 93.43'$ $ST = 46.75'$	Pls Sta 97+15.11 $\Delta = 1^{\circ} 07' 29.7''$ $L_s = 150.00'$ $LT = 100.00'$ $ST = 50.00'$

BEGIN CONSTRUCTION
 -Y2LPA- POS Sta. 10+50.03

-Y2LPA- PC Sta. 10+00.00

-Y2LPA- CS Sta. 12+00.03

-Y2RPA- CS Sta. 15+78.47

A

-Y2RPA- ST Sta. 17+18.47

-Y2LPA- ST Sta. 18+00.03

-Y2LPA- POT Sta. 16+65.80

-L- POC Sta. 82+10.11

MATCHLINE -L- STA. 79+00 SEE SHEET 7

D

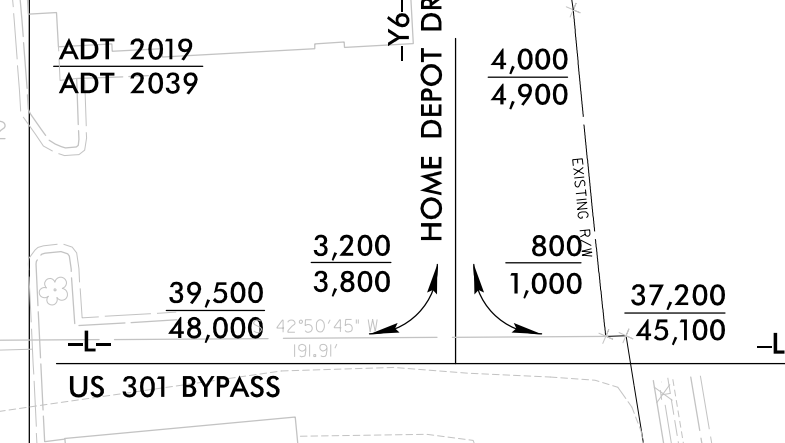
-Y2LPA-

Pls Sta 11+09.82 $\Delta = 58^{\circ} 46' 25.4''$ (RT) $D = 29^{\circ} 22' 56.8''$ $L = 200.03'$ $T = 109.82'$ $R = 195.00'$ SUPER = 0.08	Pls Sta 12+98.20 $\Delta = 41^{\circ} 08' 07.6''$ $L_s = 280.00'$ $LT = 191.97'$ $ST = 98.17'$
---	--

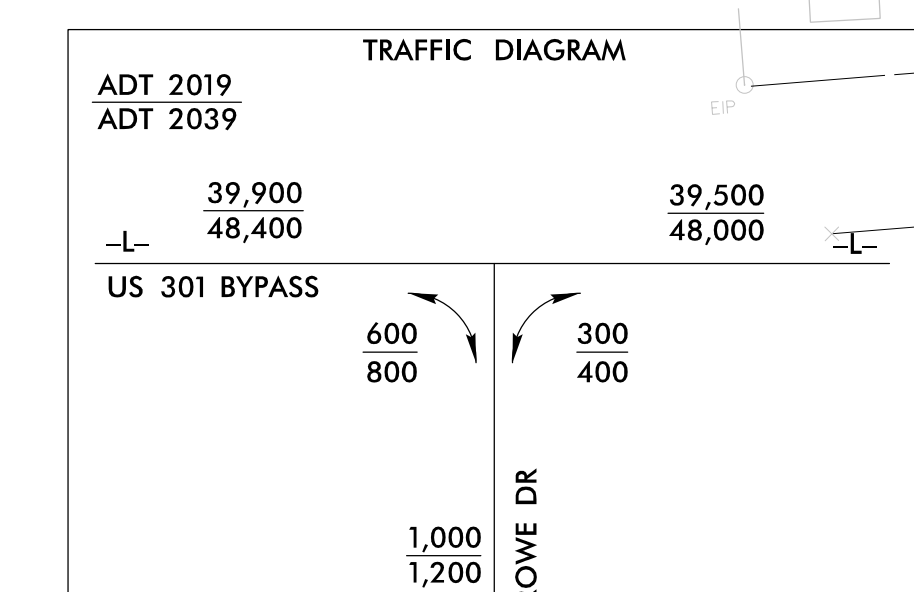
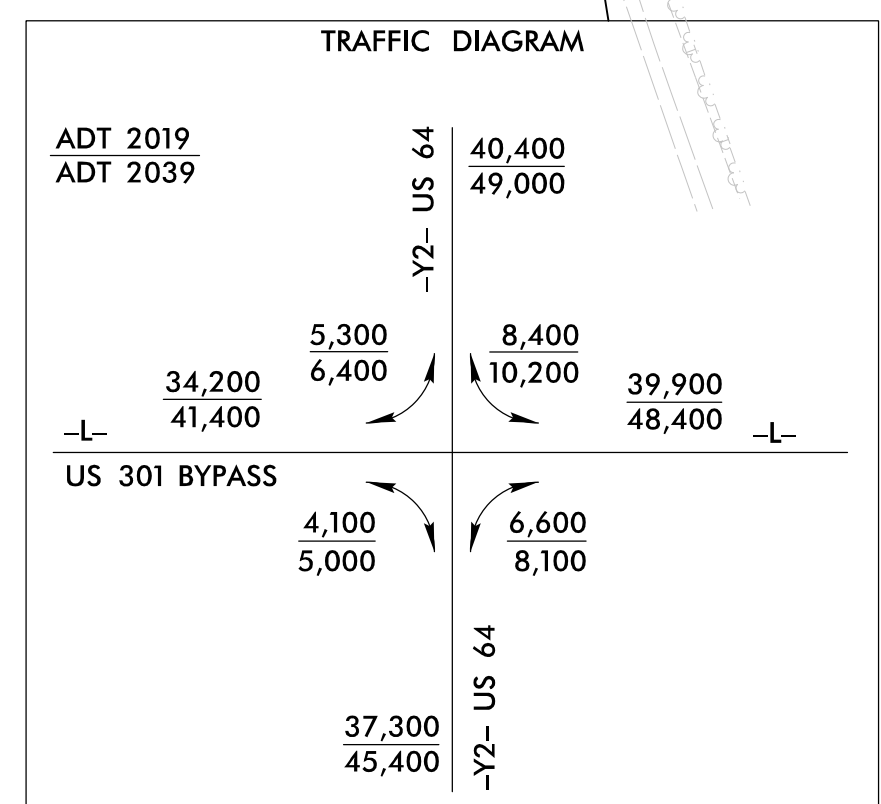
-Y6- POT Sta. 10+00.00

BEGIN CONSTRUCTION
 -Y6- POT Sta. 11+12.05

TRAFFIC DIAGRAM



MATCHLINE -L- STA. 92+00 SEE SHEET 9



DRIVEWAY RADII ARE 25' UNLESS OTHERWISE NOTED

FOR -L- PROFILE SEE SHT.16
 FOR -Y2LPA- & -Y2RPA- PROFILE SEE SHT.22
 FOR -Y6- PROFILE SEE SHT.23
 SEE SHT.2-F FOR DITCH DETAILS
 SEE SHT.2-H FOR INTERSECTION DETAILS



8.17.99