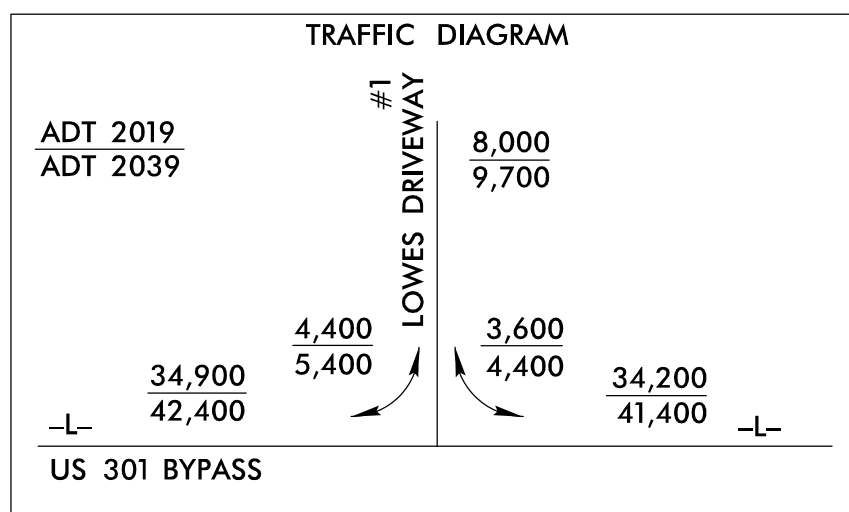


PROJECT REFERENCE NO.	SHEET NO.
U-3330	EC-17/CONST.07
RW SHEET NO.	
ROADWAY DESIGN ENGINEER	HYDRAULICS ENGINEER

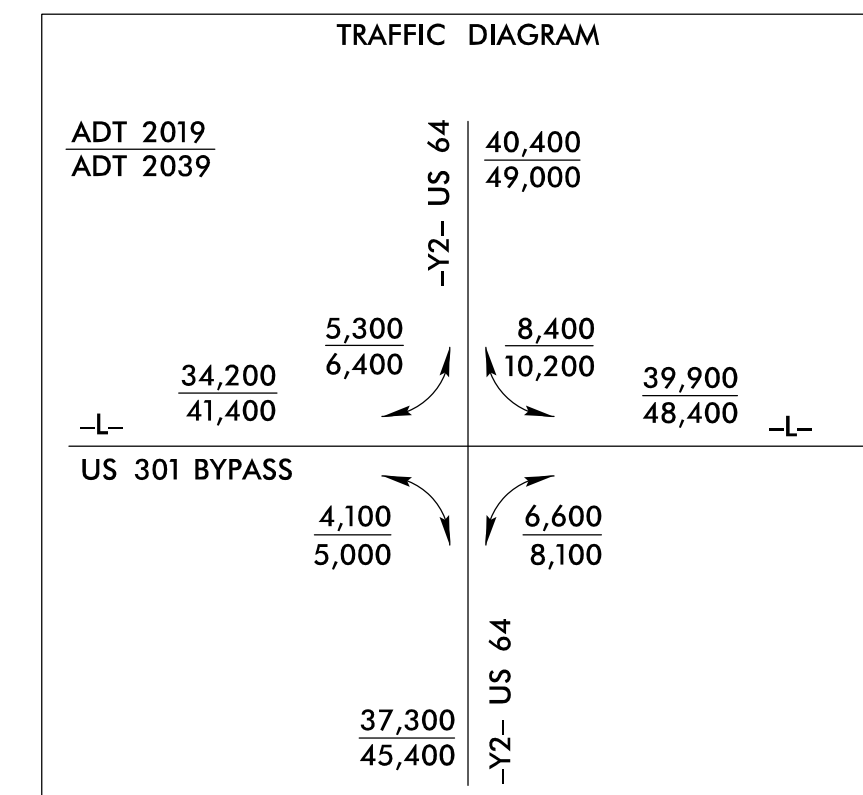


-L-

Pls Sta 77+22.10
 $\Theta_s = 1^{\circ} 07' 29.7''$
 $L_s = 150.00'$
 $LT = 100.00'$
 $ST = 50.00'$

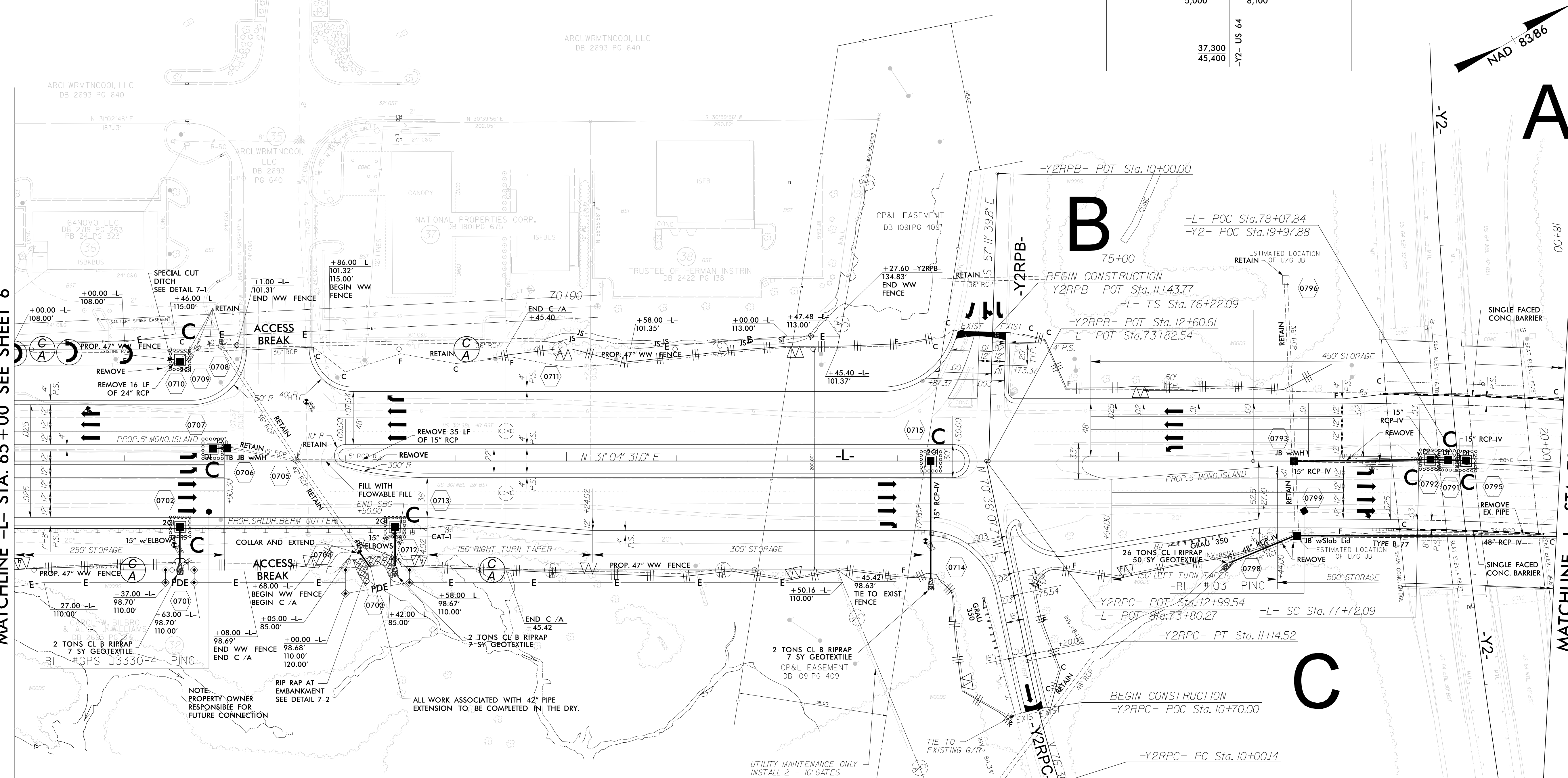
Pls Sta 87+38.46
 $\Delta = 28^{\circ} 23' 35.4'' (RT)$
 $D = 1^{\circ} 29' 59.6''$
 $L = 1,893.02'$
 $T = 966.37'$
 $R = 3,820.00'$
 $SUPER = 0.03$
 $RO = 150.00'$

Pls Sta 97+15.11
 $\Theta_s = 1^{\circ} 07' 29.7''$
 $L_s = 150.00'$
 $LT = 100.00'$
 $ST = 50.00'$



MATCHLINE -L- STA. 65+00 SEE SHEET 6

MATCHLINE -L- STA. 79+00 SEE SHEET 8



-Y2RPC-

Pls Sta 10+57.38
 $\Delta = 5^{\circ} 54' 14.6'' (RT)$
 $D = 5^{\circ} 09' 42.4''$
 $L = 114.38'$
 $T = 57.24'$
 $R = 1,110.00'$
 $SUPER = EXIST.$

-Y2RPC- POT Sta. 10+00.00

-Y2-

Pls Sta 20+46.86
 $\Delta = 9^{\circ} 50' 42.2'' (LT)$
 $D = 1^{\circ} 00' 00.0''$
 $L = 984.51'$
 $T = 493.47'$
 $R = 5,729.58'$

TRANSITION MEDIAN FROM 30' TO 33' -L- STA.73+90.00 TO STA.74+65.00

FOR -L- PROFILE SEE SHT.15
 FOR -Y2RPB- & -Y2RPC- PROFILE SEE SHT.22
 SEE SHT. 2-F FOR DITCH DETAILS
 SEE SHT. 2-H FOR INTERSECTION DETAILS

DRIVEWAY RADII ARE 25' UNLESS OTHERWISE NOTED

