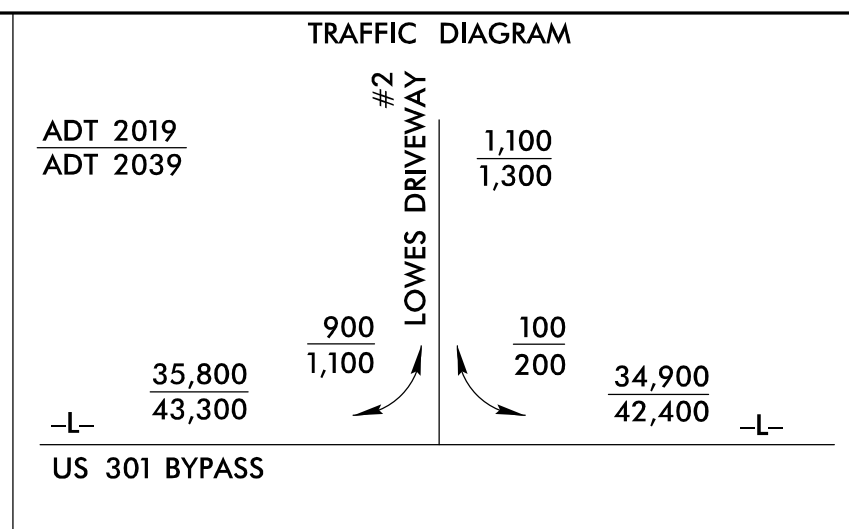
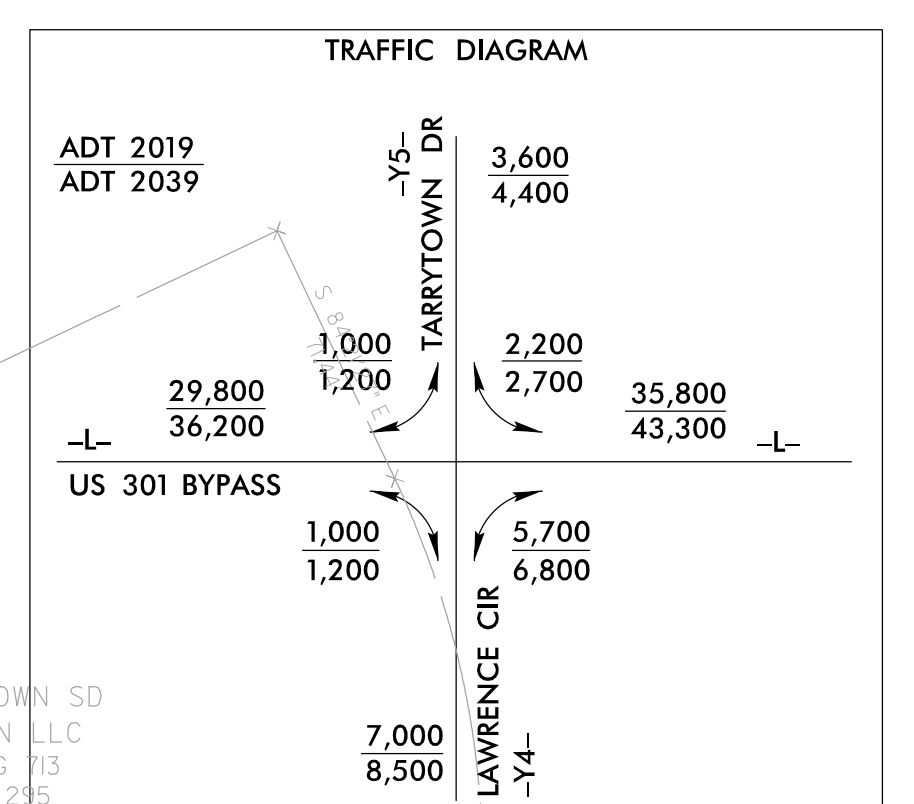


8.17.17.99  
C:\PROJECTS\2017\17-000\17-000.DWG

-Y5-  
PI Sta 11+04.34  
 $\Delta = 13^\circ 43' 27.8''$  (RT)  
 $D = 14^\circ 23' 45.3''$   
 $L = 95.34'$   
 $T = 47.90'$   
 $R = 398.00'$   
SUPER = EXIST.



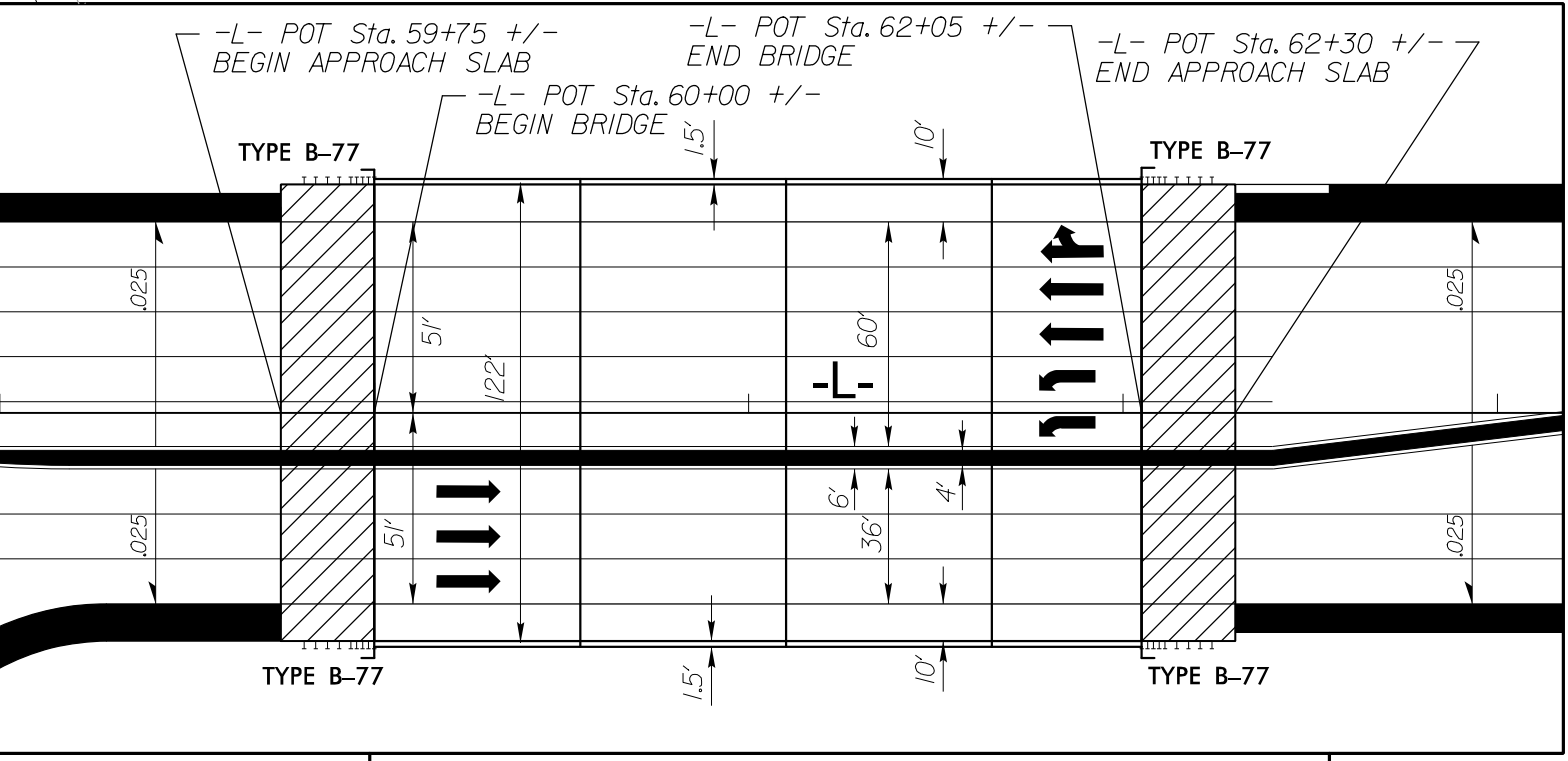
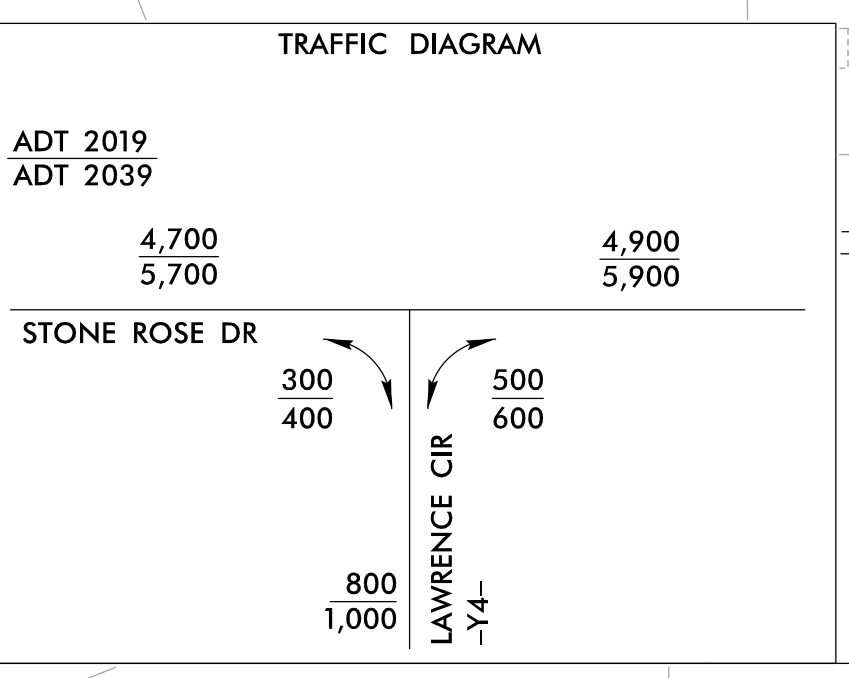
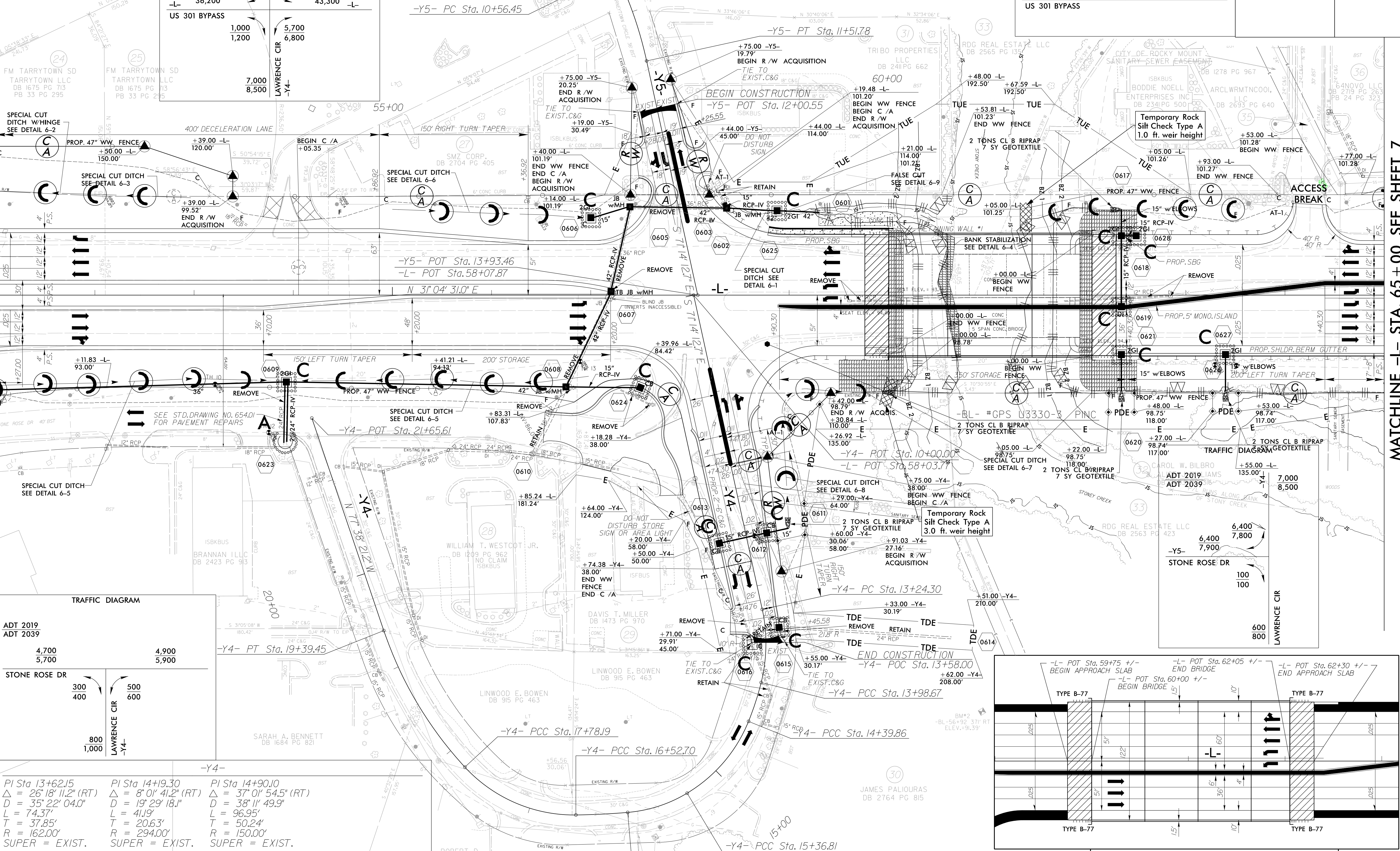
PROJECT REFERENCE NO.	SHEET NO.
U-3330	EC-16/CONST.06

RW SHEET NO.	HYDRAULICS ENGINEER

MATCHLINE -L- STA. 51+00 SEE SHEET 5

MATCHLINE -L- STA. 65+00 SEE SHEET 7



Station	Delta	Angle	Distance	Tangent	Radius	Super
PI Sta 13+62.15	26' 18" 11.2"	13° 43' 27.8"	95.34'	47.90'	398.00'	EXIST.
PI Sta 14+19.30	8' 0" 41.2"	19° 29' 18.1"	41.9'	20.63'	294.00'	EXIST.
PI Sta 14+90.10	37' 0" 54.5"	38' 11' 49.9"	96.95'	50.24'	150.00'	EXIST.
PI Sta 15+69.16	26' 0" 08.6"	40' 55' 32.0"	63.58'	32.35'	140.00'	EXIST.
PI Sta 16+26.55	4' 16' 53.1"	8' 11' 06.4"	52.31'	26.17'	700.00'	EXIST.
PI Sta 17+19.38	47' 56' 10.5"	38' 11' 49.9"	125.50'	66.68'	150.00'	EXIST.
PI Sta 18+60.02	23' 59' 52.5"	14' 52' 55.3"	161.25'	81.83'	385.00'	EXIST.

UTILIZE SPECIAL STILLING BASIN(S) AS SPECIAL STILLING BASIN(S) WHERE APPLICABLE.

DRIVEWAY RADII ARE 25' UNLESS OTHERWISE NOTED

FOR -L- PROFILE SEE SHT.14  
FOR -Y4- & -Y5- PROFILE SEE SHT.23  
SEE SHT.2-F FOR DITCH DETAILS  
SEE SHT.2-G FOR INTERSECTION DETAILS

