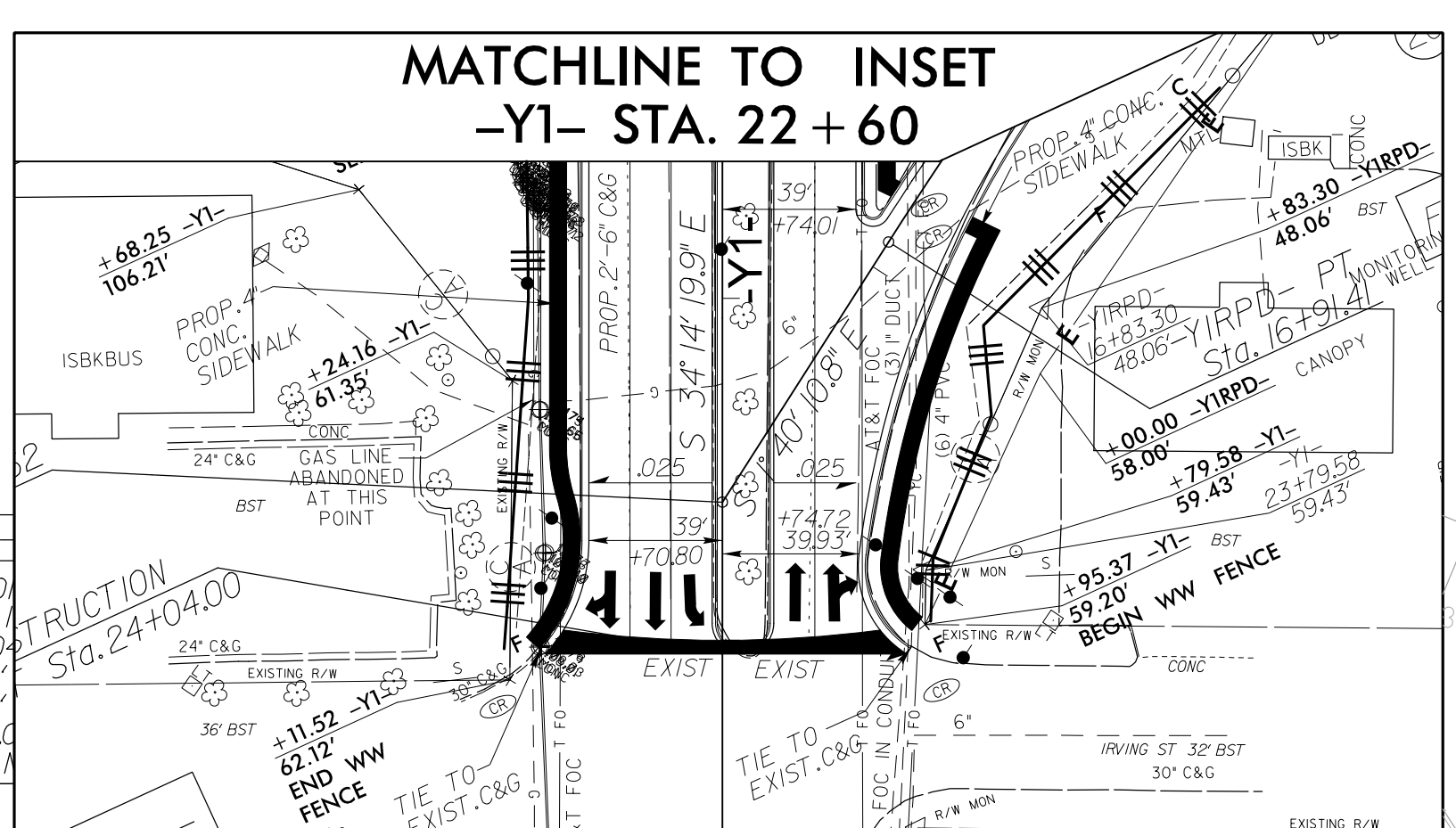
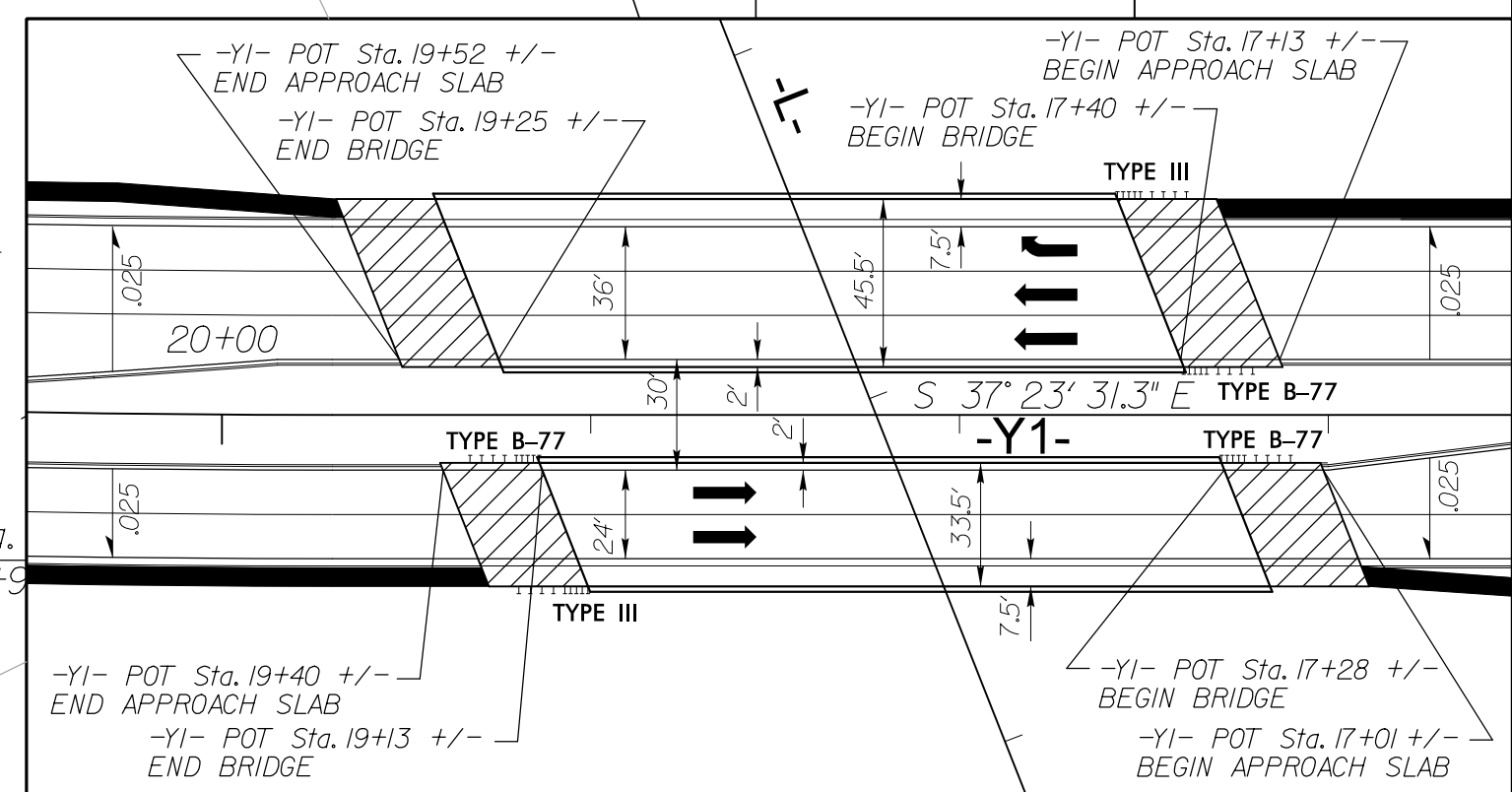


56 x 28 x 3  
1.5 inch Skimmer  
with 1.125 inch  
Orifice Diameter  
12 ft. weir  
ID 5.4



PI Sta 12+0.11 Δ = 68° 32' 29" (LT) D = 76' 23' 39.7" L = 89.72' T = 51.1' R = 75.00' SUPER = 0.08	PI Sta 13+24.78 Δ = 24° 00' 33.3" (LT) D = 14' 19' 26.2" L = 167.62' T = 85.06' R = 400.00' SUPER = 0.08	PI Sta 14+91.88 Δ = 96° 50' 39.0" (LT) D = 76' 23' 39.7" L = 126.77' T = 84.54' R = 75.00' SUPER = 0.08
--	--	---

MATCHLINE -L- STA. 37 + 00 SEE SHEET 4

MATCHLINE -L- STA. 51 + 00 SEE SHEET 6

TRAFFIC DIAGRAM

ADT 2019	-YI-	22,900
ADT 2039	-YI-	27,800
	7,900	8,400
	9,600	10,200
26,400		29,800
32,100		36,200
US 301 BYPASS	3,000	5,900
	3,700	7,100
	15,400	
	18,700	
	US 64 BUS.	



104 x 52 x 3  
2 inch Skimmer  
with 2.0 inch  
Orifice Diameter  
41.0 ft. weir  
ID 5.3

FOR -L- PROFILE SEE SHT.13  
FOR -YI- & -YIRPA- PROFILE  
SEE SHT.20  
FOR -YIRPB-, -YILPC- & -YIRPD-  
PROFILE SEE SHT.21  
SEE SHT.2-F FOR DITCH DETAILS