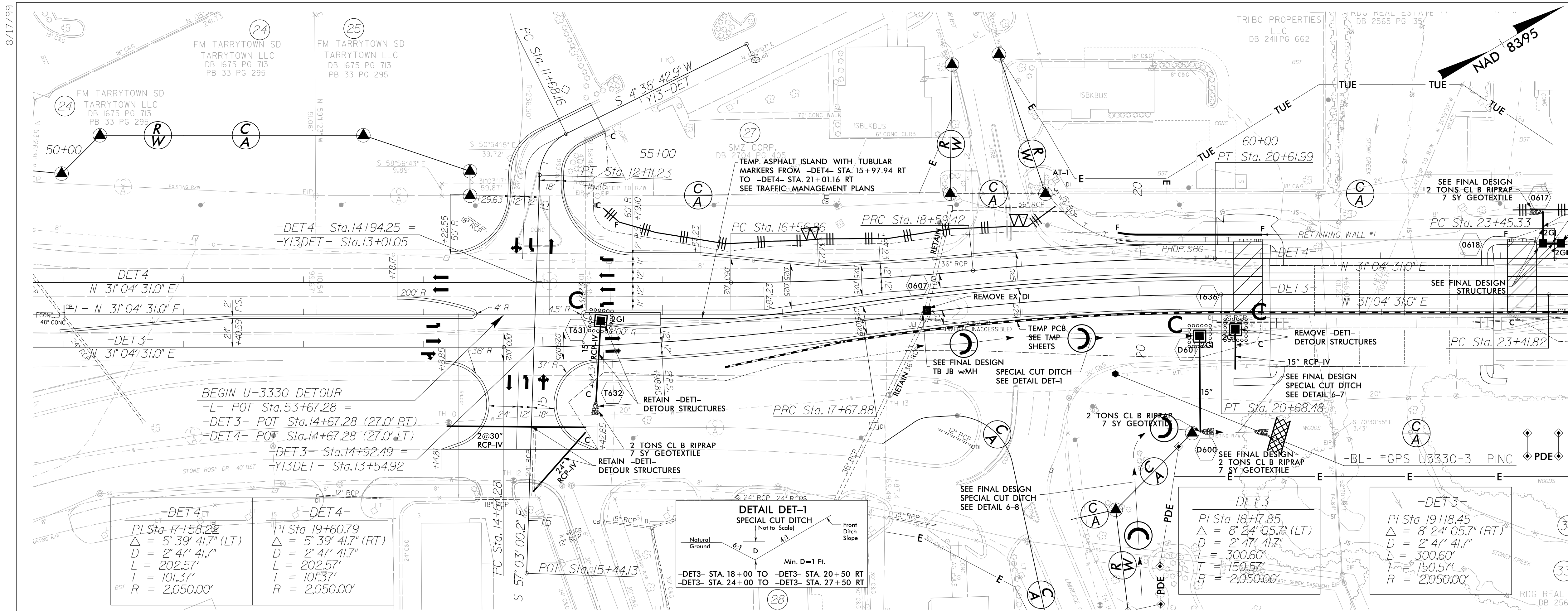
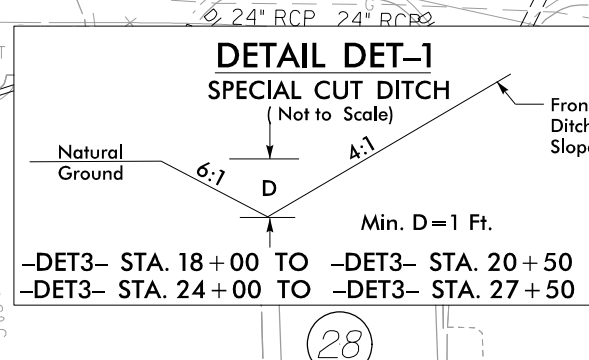


PROJECT REFERENCE NO.	SHEET NO.
U-3330	EC-13B/CONST.2B-6
RW SHEET NO.	
ROADWAY DESIGN ENGINEER	HYDRAULICS ENGINEER



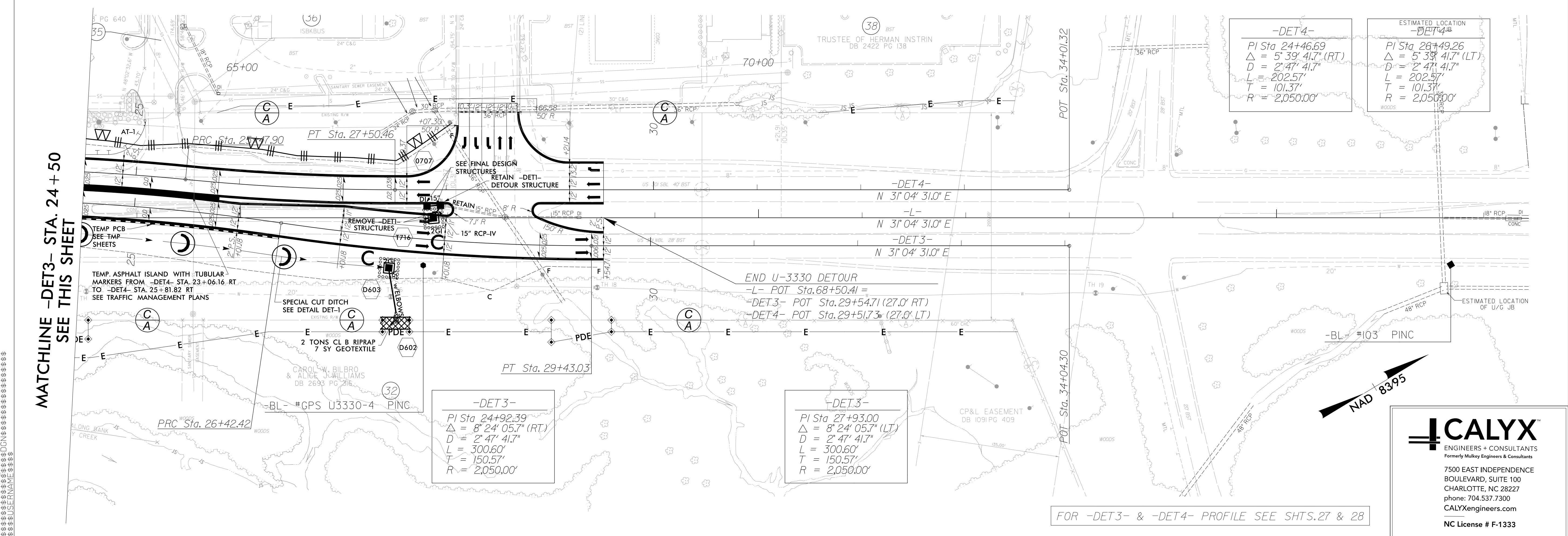
MATCHLINE -DET3- STA. 24 + 50
SEE THIS SHEET

-DET4-	-DET4-
PI Sta 17+58.22	PI Sta 19+60.79
Δ = 5' 39' 41.7" (LT)	Δ = 5' 39' 41.7" (RT)
D = 2' 47' 41.7"	D = 2' 47' 41.7"
L = 202.57'	L = 202.57'
T = 101.37'	T = 101.37'
R = 2,050.00'	R = 2,050.00'



-DET3-
PI Sta 18+17.85
Δ = 8' 24' 05.7" (LT)
D = 2' 47' 41.7"
L = 300.60'
T = 150.57'
R = 2,050.00'

-DET3-
PI Sta 19+18.45
Δ = 8' 24' 05.7" (RT)
D = 2' 47' 41.7"
L = 300.60'
T = 150.57'
R = 2,050.00'



MATCHLINE -DET3- STA. 24 + 50
SEE THIS SHEET

-DET4-	ESTIMATED LOCATION -DET4-
PI Sta 24+46.69	PI Sta 26+49.26
Δ = 5' 39' 41.7" (RT)	Δ = 5' 39' 41.7" (LT)
D = 2' 47' 41.7"	D = 2' 47' 41.7"
L = 202.57'	L = 202.57'
T = 101.37'	T = 101.37'
R = 2,050.00'	R = 2,050.00'

-DET3-	-DET3-
PI Sta 24+92.39	PI Sta 27+93.00
Δ = 8' 24' 05.7" (RT)	Δ = 8' 24' 05.7" (LT)
D = 2' 47' 41.7"	D = 2' 47' 41.7"
L = 300.60'	L = 300.60'
T = 150.57'	T = 150.57'
R = 2,050.00'	R = 2,050.00'

FOR -DET3- & -DET4- PROFILE SEE SHTS. 27 & 28

CALYX
ENGINEERS + CONSULTANTS
Formerly Mulkey Engineers & Consultants
7500 EAST INDEPENDENCE
BOULEVARD, SUITE 100
CHARLOTTE, NC 28227
phone: 704.537.7300
CALYXengineers.com
NC License # F-1333