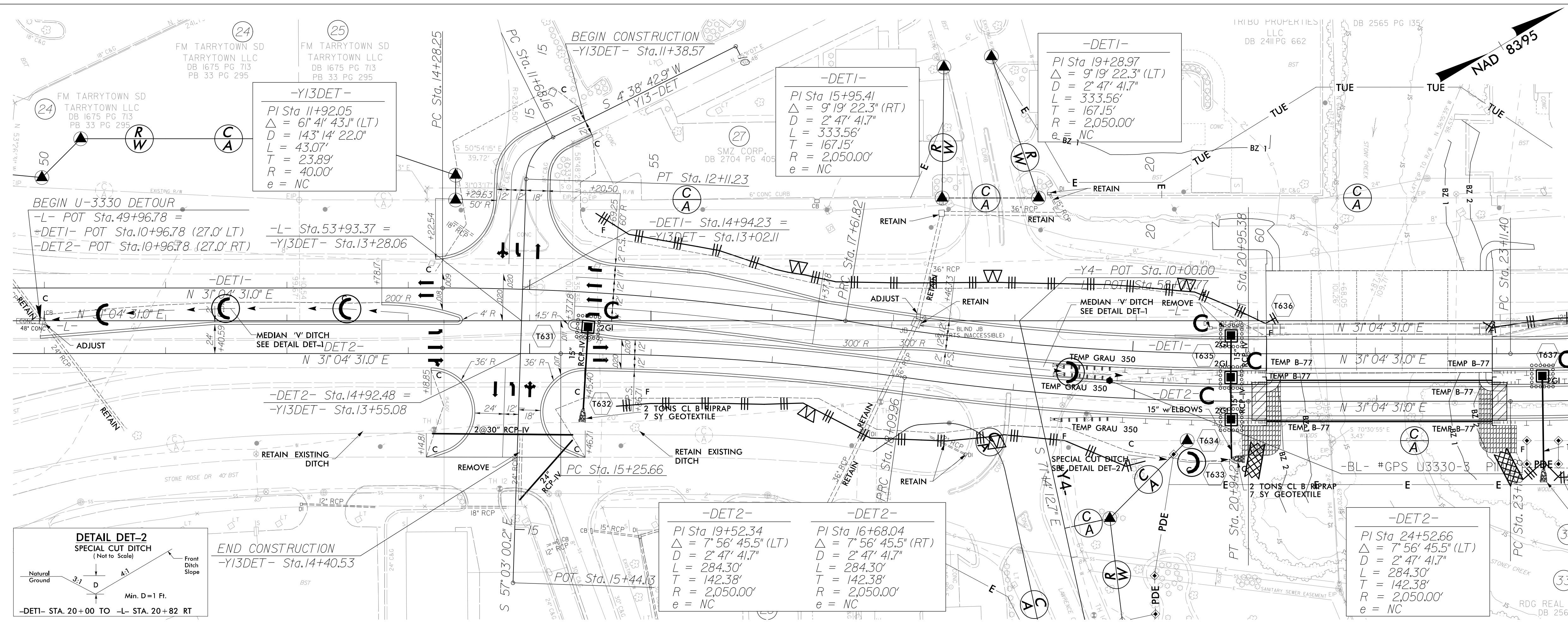


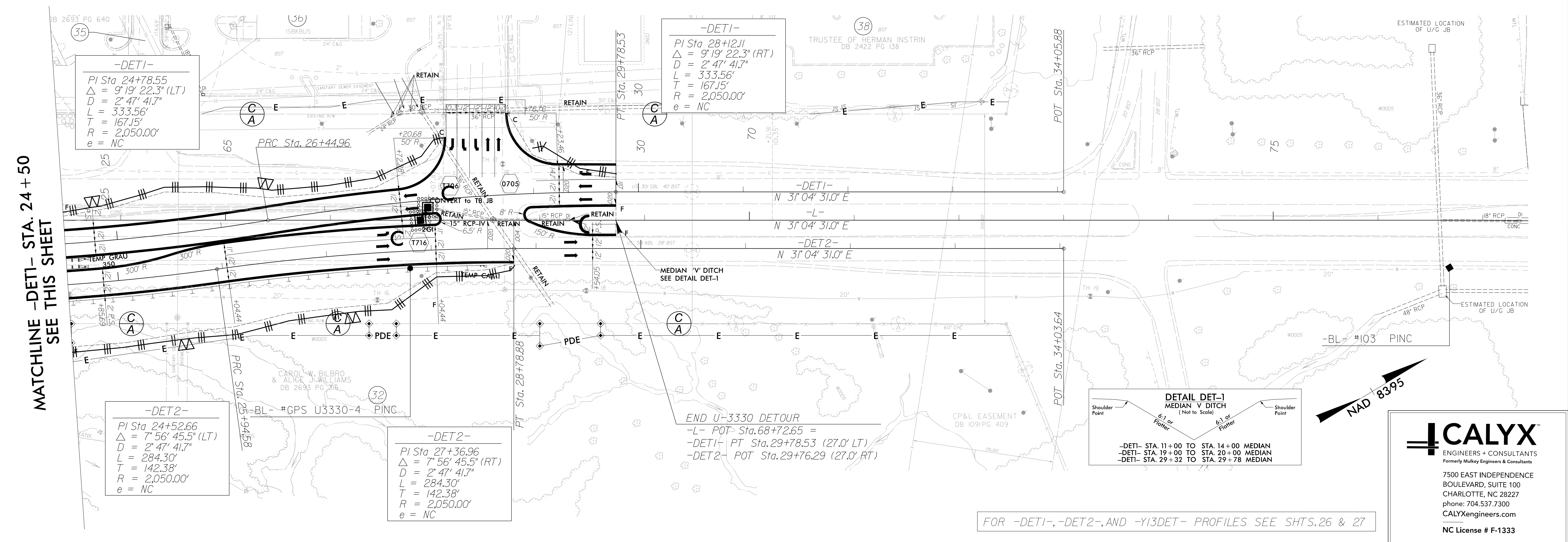
8/17/99

PROJECT REFERENCE NO.		SHEET NO.	
U-3330		EC-13A/CONST.2B-5	
RW SHEET NO.			
ROADWAY DESIGN ENGINEER		HYDRAULICS ENGINEER	



MATCHLINE -DET1- STA. 24 + 50
SEE THIS SHEET

MATCHLINE -DET1- STA. 24 + 50
SEE THIS SHEET



CALYX
 ENGINEERS + CONSULTANTS
 Formerly Mulvey Engineers & Consultants
 7500 EAST INDEPENDENCE
 BOULEVARD, SUITE 100
 CHARLOTTE, NC 28227
 phone: 704.537.7300
 CALYXengineers.com
 NC License # F-1333