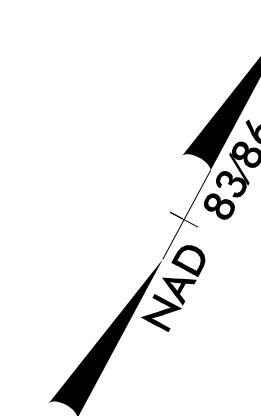


8/17/99

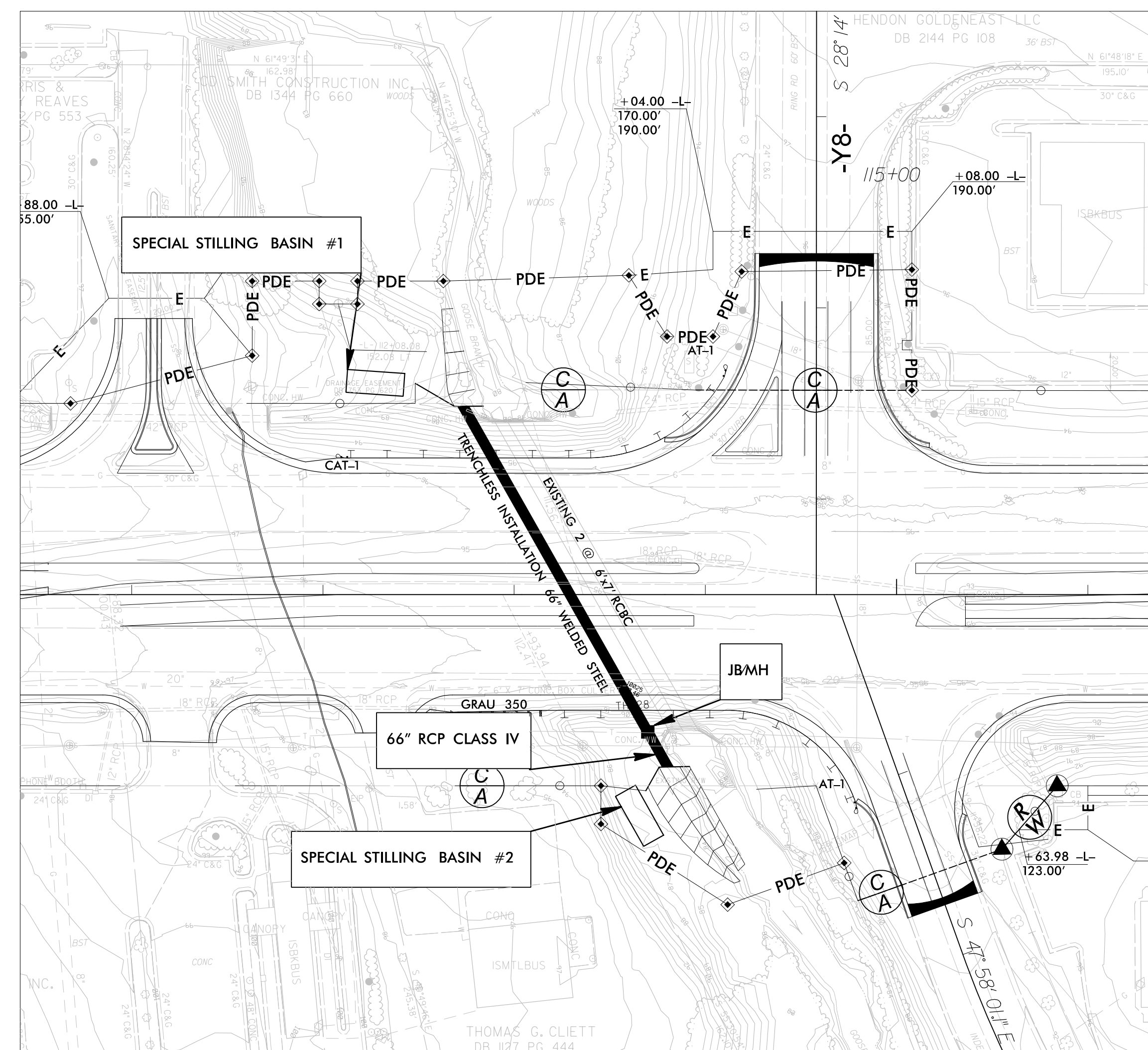
PROJECT REFERENCE NO.	SHEET NO.
U-3330	EC-II/CONST.10
RW SHEET NO.	
ROADWAY DESIGN ENGINEER	HYDRAULICS ENGINEER

CULVERT CONSTRUCTION SEQUENCE STA. 113+47.97

PHASE I



1. INSTALL SPECIAL STILLING BASINS.
2. PERFORM GRADING AT INLET AND OUTLET SUFFICIENT TO PREPARE FOR INSTALLATION OF 66" STEEL PIPE AND WATER DIVERSION TO NEW 66" STEEL PIPE. INSTALL COIR FIBER MATTING IN EXCAVATED AREA TO PREVENT EROSION.
3. INSTALL 196 LF OF 66" WELDED STEEL PIPE VIA TRENCHLESS INSTALLATION. INSTALL JBMH AND 54 LF OF 66" RCP CLASS IV.
4. INSTALL PORTION OF HEADWALLS AND WINGWALLS ON INLET AND OUTLET WHILE PUMPING EFFLUENT INTO SPECIAL STILLING BASIN.



8/17/99