

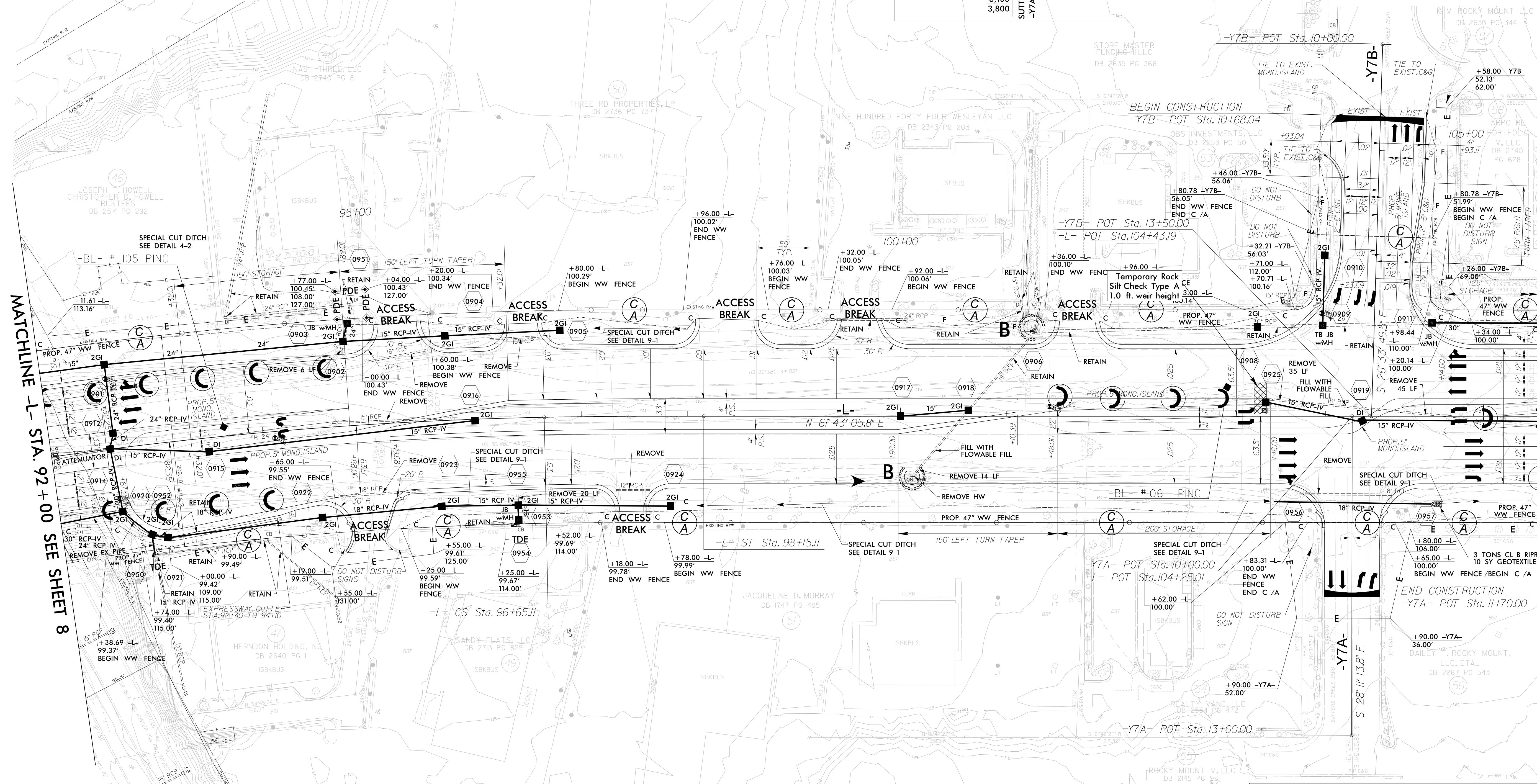
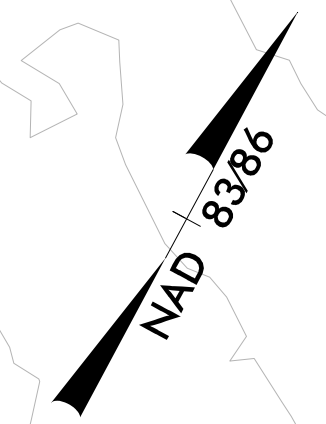
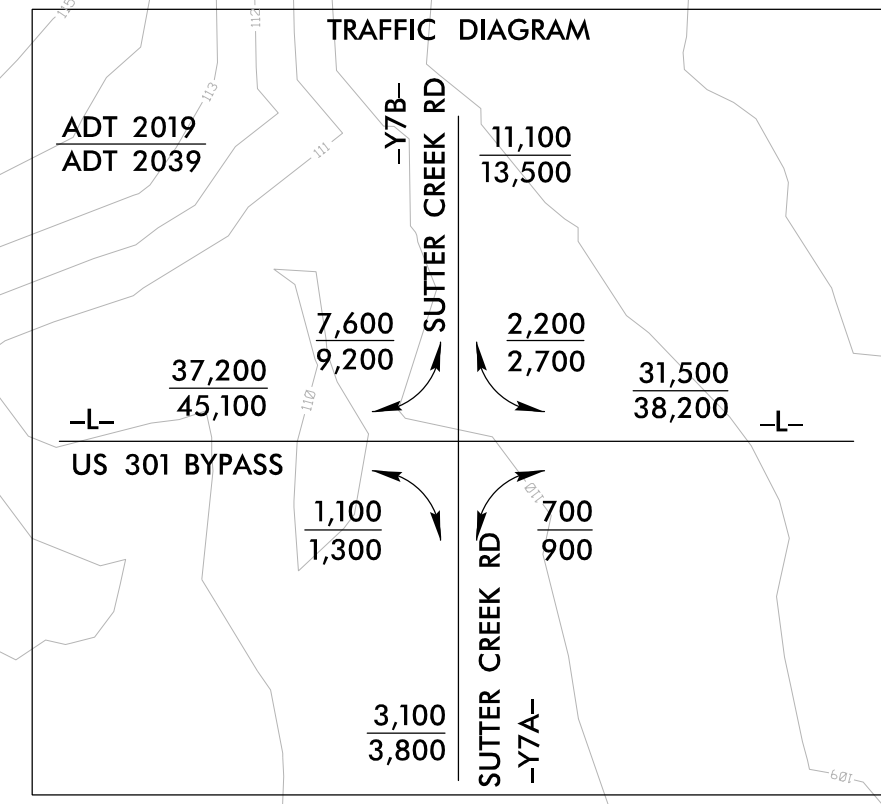
PROJECT REFERENCE NO.	SHEET NO.
U-3330	EC-09/CONST.09
RW SHEET NO.	
ROADWAY DESIGN ENGINEER	HYDRAULICS ENGINEER

CLEARING AND GRUBBING
EROSION CONTROL FOR
CONSTRUCTION SHEET 09

Pls Sta 77+22.10
 $\Delta s = 1'07'' 29.7''$
 $Ls = 150.00'$
 $LT = 100.00'$
 $ST = 50.00'$

Pls Sta 87+38.46
 $\Delta = 28' 23'' 35.4'' (RT)$
 $D = 1'29'' 59.6''$
 $L = 1,893.02'$
 $T = 966.37'$
 $R = 3,820.00'$
 $SUPER = 0.03$
 $RO = 150.00'$

Pls Sta 97+15.11
 $\Delta s = 1'07'' 29.7''$
 $Ls = 150.00'$
 $LT = 100.00'$
 $ST = 50.00'$



MATCHLINE -L- STA. 92+00 SEE SHEET 8

MATCHLINE -L- STA. 106+00 SEE SHEET 10

NOTE:
 PLACE TEMPORARY ROCK SEDIMENT DAMS TYPE - B
 AND TEMPORARY ROCK SILT CHECKS TYPE - A AT
 DRAINAGE OUTLETS.

DRIVEWAY RADII ARE 25' UNLESS OTHERWISE NOTED

FOR -L- PROFILE SEE SHT. 16 & 17
 FOR -Y7A- & -Y7B- PROFILE SEE SHT. 23
 SEE SHT. 2-F FOR DITCH DETAILS
 SEE SHT. 2-1 FOR INTERSECTION DETAILS



8.17.09