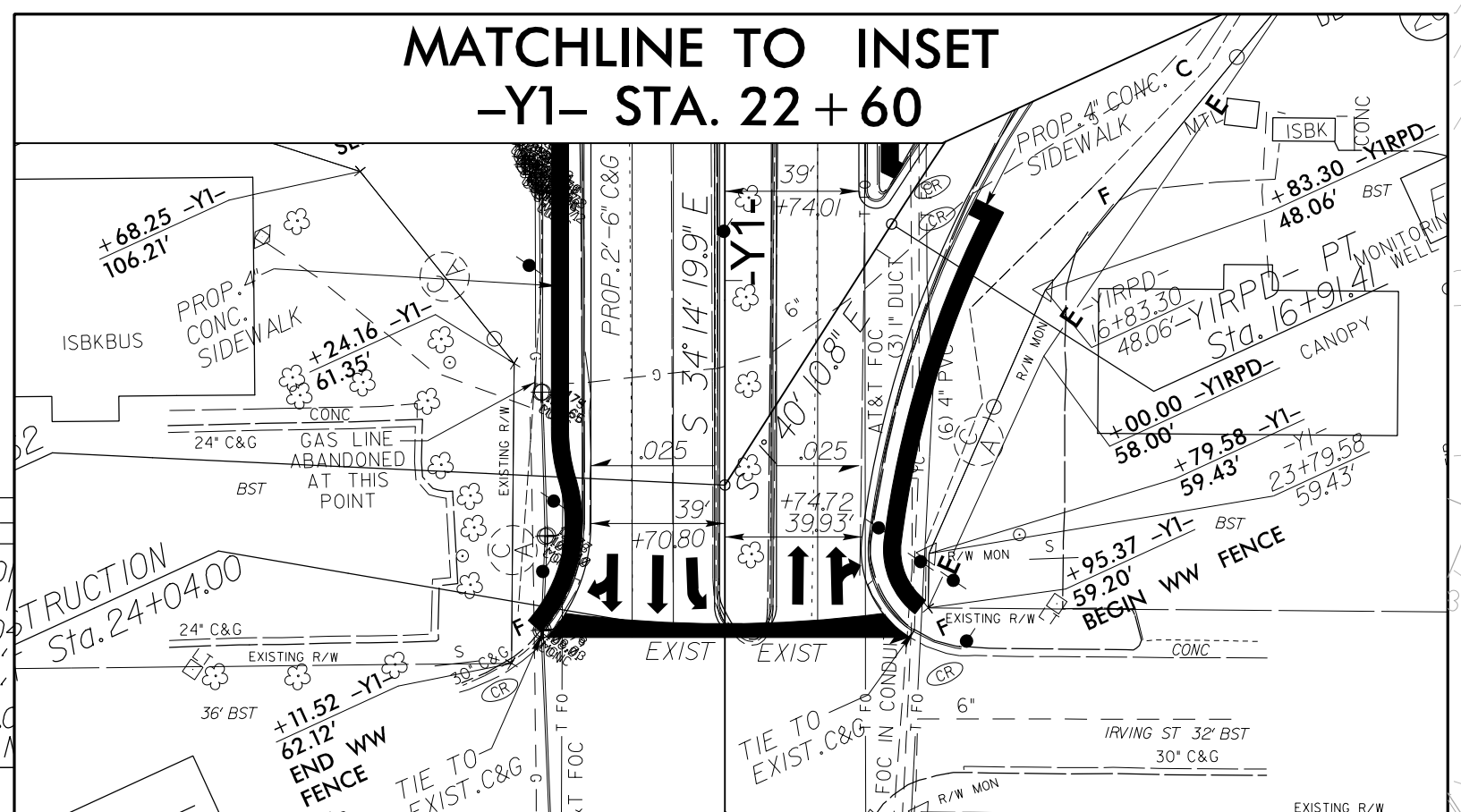


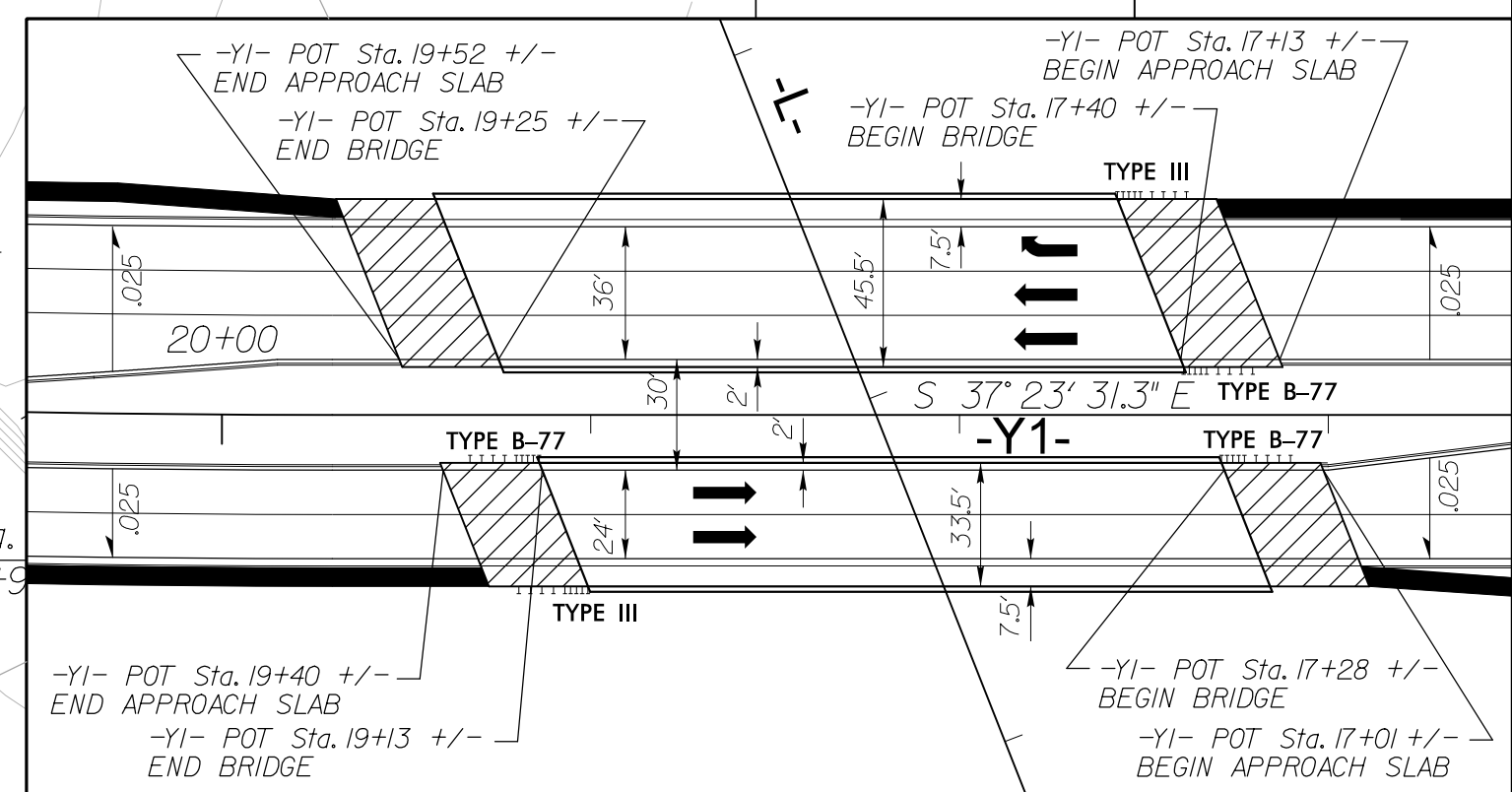
8.17.99

PROJECT REFERENCE NO.	SHEET NO.
U-3330	EC-05/CONST.05
RW SHEET NO.	
ROADWAY DESIGN ENGINEER	HYDRAULICS ENGINEER



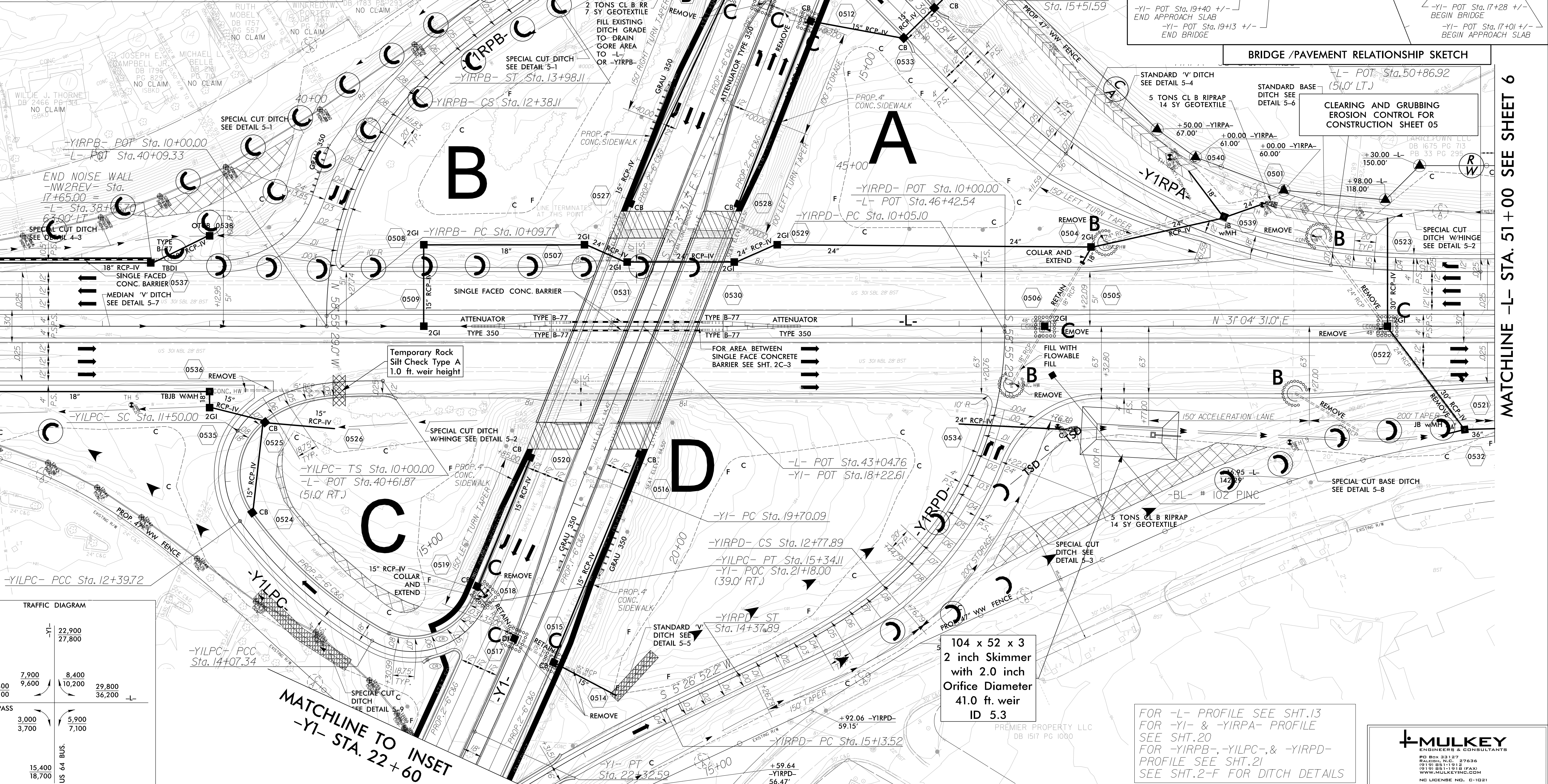
PI Sta 12+01.11 Δ = 68°32'29" (LT) D = 76'23'39.7" L = 89.72' T = 51.11' R = 75.00' SUPER = 0.08	PI Sta 13+24.78 Δ = 24°00'33.3" (LT) D = 14'19'26.2" L = 167.62' T = 85.06' R = 400.00' SUPER = 0.08	PI Sta 14+91.88 Δ = 96°50'39.0" (LT) D = 76'23'39.7" L = 126.77' T = 84.54' R = 75.00' SUPER = 0.08
--	--	---

NOTE: PLACE TEMPORARY ROCK SEDIMENT DAMS TYPE - B AND TEMPORARY ROCK SILT CHECKS TYPE - A AT DRAINAGE OUTLETS.



MATCHLINE -L- STA. 37 + 00 SEE SHEET 4

MATCHLINE -L- STA. 51 + 00 SEE SHEET 6



TRAFFIC DIAGRAM

ADT 2019	-YI-	22,900
ADT 2039	-YI-	27,800
	7,900	8,400
	9,600	10,200
	26,400	29,800
	32,100	36,200
US 301 BYPASS	3,000	5,900
	3,700	7,100
	15,400	
	18,700	
	US 64 BUS.	

MATCHLINE TO INSET
-YI- STA. 22 + 60

FOR -L- PROFILE SEE SHT.13
FOR -YI- & -YIRPA- PROFILE SEE SHT.20
FOR -YIRPB-, -YILPC- & -YIRPD- PROFILE SEE SHT.21
SEE SHT.2-F FOR DITCH DETAILS



104 x 52 x 3
2 inch Skimmer
with 2.0 inch
Orifice Diameter
41.0 ft. weir
ID 5.3