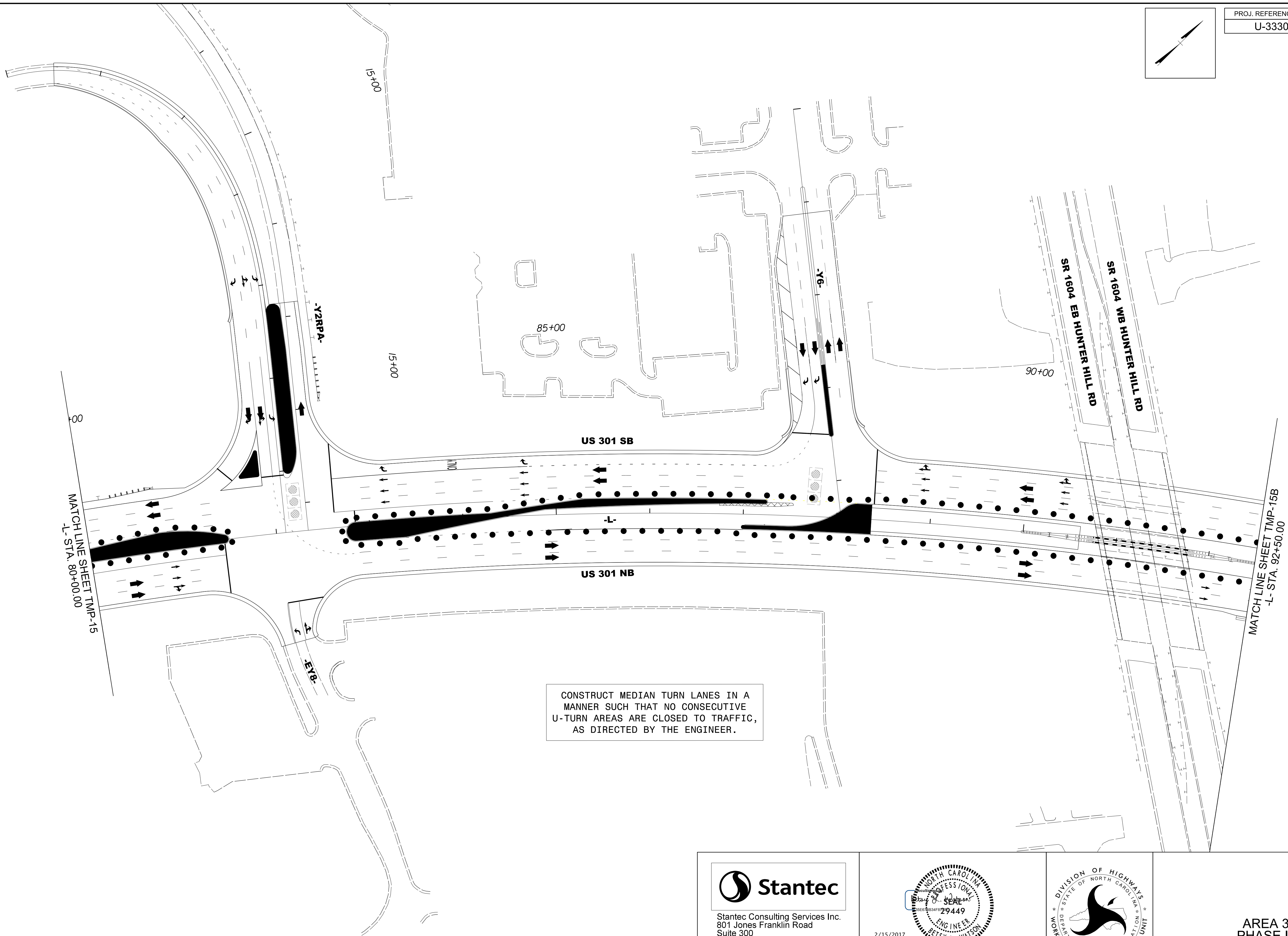


PROJ. REFERENCE NO.	SHEET NO.
U-3330	TMP-15A



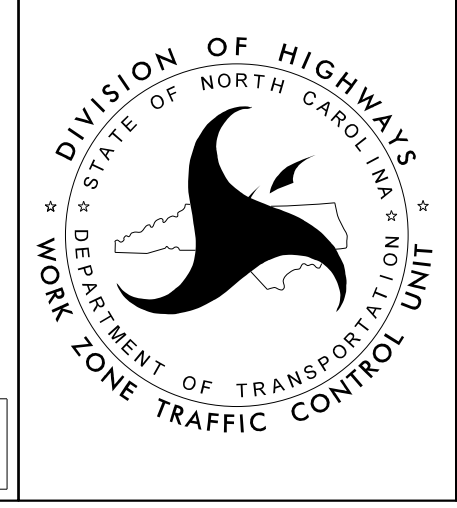
CONSTRUCT MEDIAN TURN LANES IN A MANNER SUCH THAT NO CONSECUTIVE U-TURN AREAS ARE CLOSED TO TRAFFIC, AS DIRECTED BY THE ENGINEER.

2/8/2017
Us\Traffic\Transportation Management\Plan\TMP\PLAN SHEETS\U-3330_TMP_15A_AREA_3_PHASE_03.dgn
cowlings

Stantec
Stantec Consulting Services Inc.
801 Jones Franklin Road
Suite 300
Raleigh, NC 27606
Tel. 919.851.6866
Fax. 919.851.7024
www.stantec.com
License No. F-0672

2/15/2017

**DOCUMENT NOT CONSIDERED FINAL
UNLESS ALL SIGNATURES COMPLETED**



**AREA 3
PHASE III**

WORKING STATE OF NORTH CAROLINA
DIVISION OF HIGHWAYS
DEPARTMENT OF TRANSPORTATION
TRAFFIC CONTROL UNIT