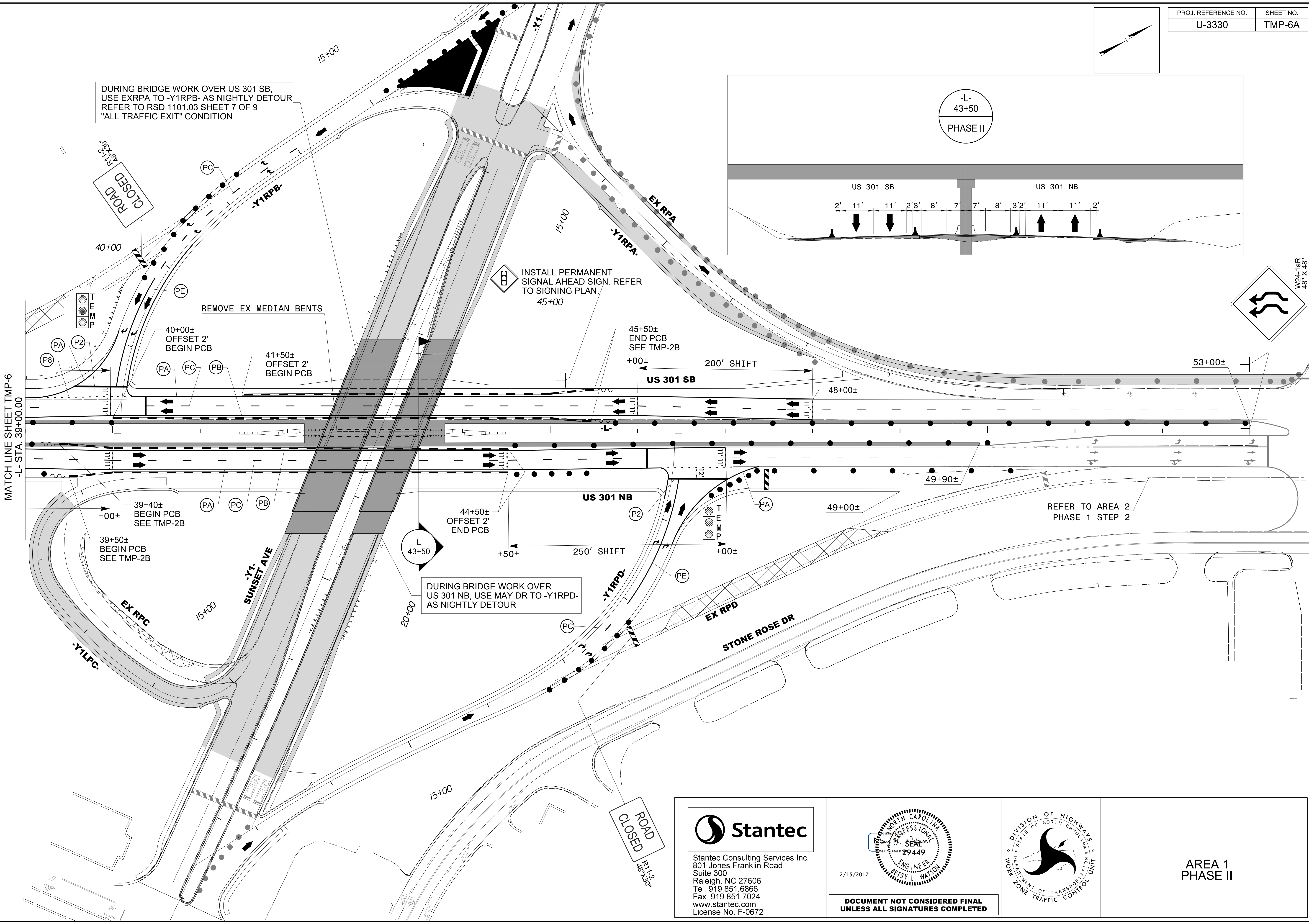
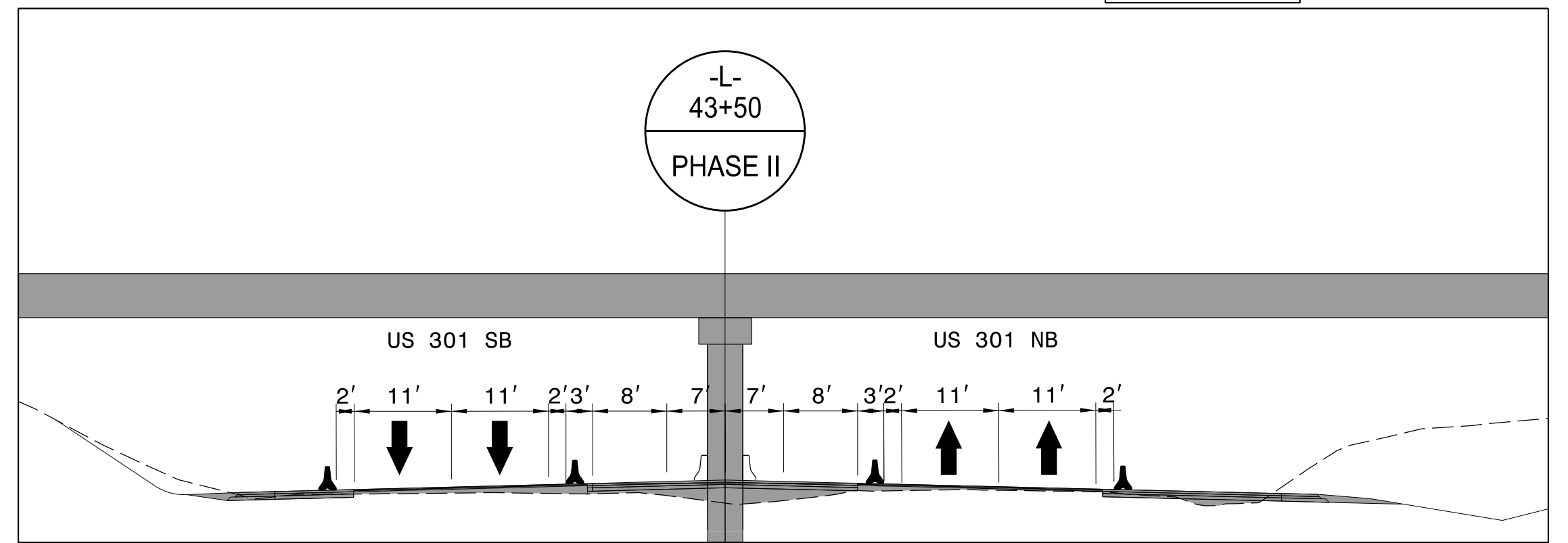


DURING BRIDGE WORK OVER US 301 SB, USE EXRPA TO -Y1RPB- AS NIGHTLY DETOUR REFER TO RSD 1101.03 SHEET 7 OF 9 "ALL TRAFFIC EXIT" CONDITION



MATCH LINE SHEET TMP-6  
-L- STA. 39+00.00

ROAD CLOSED  
R112  
48+30'

INSTALL PERMANENT SIGNAL AHEAD SIGN. REFER TO SIGNING PLAN.  
45+00

REMOVE EX MEDIAN BENTS

40+00± OFFSET 2' BEGIN PCB

41+50± OFFSET 2' BEGIN PCB

45+50± END PCB SEE TMP-2B

200' SHIFT

US 301 SB

53+00±

39+40± BEGIN PCB SEE TMP-2B

39+50± BEGIN PCB SEE TMP-2B

44+50± OFFSET 2' END PCB

US 301 NB

250' SHIFT

REFER TO AREA 2 PHASE 1 STEP 2

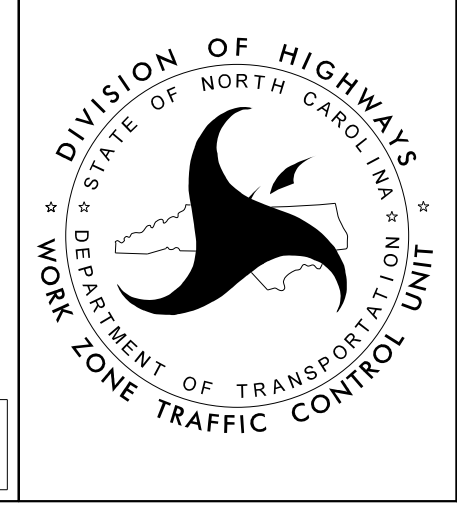
DURING BRIDGE WORK OVER US 301 NB, USE MAY DR TO -Y1RPD- AS NIGHTLY DETOUR

STONE ROSE DR

ROAD CLOSED  
R112  
48+30'

**Stantec**  
Stantec Consulting Services Inc.  
801 Jones Franklin Road  
Suite 300  
Raleigh, NC 27606  
Tel. 919.851.6866  
Fax. 919.851.7024  
www.stantec.com  
License No. F-0672

2/15/2017  
**DOCUMENT NOT CONSIDERED FINAL  
UNLESS ALL SIGNATURES COMPLETED**



**AREA 1  
PHASE II**

2/8/2017  
Us:\Traffic\Transportation Management\Plan\TMP\PLAN SHEETS\U-3330\_TMP\_06A.AREA 1\_PHASE\_02.dgn  
cowlings