

# CONTRACTOR MAY WORK ON EACH AREA CONCURRENTLY

PROJ. REFERENCE NO.	SHEET NO.
U-3330	TMP-3A

PRIOR TO ANY WORK OPERATIONS, INSTALL WORK ZONE ADVANCE WARNING SIGNS ON US 301 (-L-) AND -Y- LINES PER ROADWAY STANDARD DRAWING 1101.01, SHEET 3 OF 3.

## AREA 1

US 64 BUS. SUNSET RD. (-Y1-) INTERCHANGE

PHASE I: (TMP 4-4F)

USING TEMPORARY LANE CLOSURES (RSD 1101.02, SHEET 3 OF 15 AND SHEET 1 OF 15 AT -Y- LINES), PERFORM THE FOLLOWING:

STEP 1:

°BEGIN CONSTRUCTION OF US 301 BYP OUTSIDE WIDENING CONSTRUCTING UP TO THE EDGE AND ELEVATION OF EXISTING PAVEMENT AS FOLLOWS:

STA. 26+50±-49+00± (RIGHT SIDE)

STA. 23+25±-27+50± (LEFT SIDE)  
STA. 38+50±-53+75± (LEFT SIDE)

°BEGIN -Y1RPA- WIDENING

°BEGIN -Y1RPB- AND -Y1RPD-

### INTERMEDIATE CONTRACT TIME SPECIAL PROVISION

COMPLETE AREA 1 PHASE I STEP 2, PHASE II STEPS 1-2, AND PHASE III WITHIN A PERIOD OF 430 CONSECUTIVE CALENDAR DAYS.

STEP 2:

IMPLEMENT OFFSITE DETOUR (TMP-5), CLOSE US 64 BUS/SUNSET RD. AND PERFORM THE FOLLOWING:

°BEGIN REMOVAL OF EXISTING US 64 US BRIDGE OUTSIDE BENTS AND DECKS.

°BEGIN -Y1LPC-

PHASE II: (TMP 6-6A)

STEP 1:

UNDER THE US 64 BUS BRIDGES, SHIFT US 301 BYP SB/NB TRAFFIC TO THE OUTSIDE AND PLACE PCB. BEHIND PCB, REMOVE REMAINING EXISTING BENTS AND BEGIN CONSTRUCTION OF PROPOSED BRIDGE.

COMPLETE AND OPEN -Y1RPB- AND -Y1RPD-. CLOSE AND REMOVE EXISTING RAMPS B/D.

STEP 2:

CONSTRUCT PROPOSED -L- OUTSIDE WIDENING WHERE EXISTING RAMP B WAS LOCATED STA. 28+00-38+50.

PHASE III: (TMP 7-7A)

COMPLETE AND OPEN US 64 BUS/SUNSET AVE. BRIDGES TO TRAFFIC.

COMPLETE AND OPEN -Y1LPC-.

COMPLETE -Y1RPA-.

REMOVE ALL TRAFFIC CONTROL DEVICES AND OPEN AREA 1 TO THE FINAL PATTERN.

## AREA 2

STONEY CREEK BRIDGE

PHASE I:

STEP 1: (TMP 8-8A)

CONSTRUCT TEMPORARY PAVEMENT ACCESS -Y13DET- FOR EXISTING LAWRENCE CIRCLE -Y4- AND REMOVE EXISTING ISLAND AT ENTRANCE TO TARRYTOWN CENTER NEAR STA. 54+00. BEGIN INSTALLATION OF TEMPORARY SIGNAL AT STA. 54+00± AND MAINTAIN COVERED.

BEGIN TEMPORARY STONEY CREEK BRIDGE AND APPROACHES (-DET1- AND -DET2-).

STEP 2: (TMP 9-9A)

ACTIVATE TEMPORARY SIGNAL AT STA. 54+00 AND OPEN TEMPORARY ACCESS -Y13DET- TO LAWRENCE CIRCLE (-Y4-).

CONSTRUCT TEMPORARY STONEY CREEK BRIDGE AND APPROACHES (-DET1- AND -DET2-).

PLACE TEMPORARY PAVEMENT MARKINGS FOR -DET2- AS SHOWN ON TMP-10A.

PHASE II: (TMP 10-10B)

USING TEMPORARY LANE CLOSURES (RSD 1101.02, SHEET 3 OF 15), PERFORM THE FOLLOWING IN A CONTINUOUS OPERATION:

°SHIFT US 301 BYP NB TRAFFIC TO -DET2- AND NEWLY CONSTRUCTED TEMPORARY BRIDGE.

°PLACE TEMPORARY PAVEMENT MARKINGS ALONG -DET1- AND SHIFT US 301 BYP SB TRAFFIC TO -DET1-. (TMP-10A)

\*COORDINATE TIME AND DATE OF TRAFFIC SHIFT WITH THE ENGINEER.\*

BEHIND PORTABLE CONCRETE BARRIER, CONSTRUCT PROPOSED STONEY CREEK BRIDGE STAGE 1 (LEFT SIDE).

CONSTRUCT TEMPORARY ALIGNMENTS -DET3- AND -DET4- AND PLACE TEMPORARY PAVEMENT MARKINGS AS SHOWN ON TMP-11A.

PHASE III: (TMP 11-11A)

SHIFT US 301 BYP (-L-) TRAFFIC TO STAGE 1 OF PROPOSED BRIDGE OVER STONEY CREEK -DET3- AND -DET4-.

\*COORDINATE TIME AND DATE OF TRAFFIC SHIFT WITH THE ENGINEER.\*

REMOVE TEMPORARY BRIDGE AND CONSTRUCT REMAINING PORTION OF PROPOSED STONEY CREEK BRIDGE STAGE 2 (RIGHT SIDE).

PHASE IV: (TMP 12-12A)

REMOVE TEMPORARY INTERSECTION, Y13-DET-, AND SIGNAL AT -L- STA. 54+00. ACTIVATE NEW SIGNAL AND OPEN PROPOSED -Y5- TARRYTOWN CENTER AND -Y4- LAWRENCE CIRCLE TO TRAFFIC.

COMPLETE AND OPEN STONEY CREEK BRIDGE TO PROPOSED LANES.

CONSTRUCT PROPOSED -L- OUTSIDE WIDENING WHERE EXISTING RAMP D WAS LOCATED STA. 49+00-56+00.

REMOVE ALL TRAFFIC CONTROL DEVICES AND OPEN AREA 2 TO THE FINAL PATTERN.

## AREA 3

US 301 BYPASS (-L-)

PHASE I: (TMP 13-13D)

USING TEMPORARY LANE CLOSURES (RSD 1101.02, SHEET 3 OF 15 AND SHEET 1 OF 15 AT -Y- LINES), PERFORM THE FOLLOWING:

°BEGIN CONSTRUCTION OF US 301 BYP (-L-) CONSTRUCTING UP TO THE EDGE AND ELEVATION OF EXISTING PAVEMENT AS FOLLOWS:

STA. 69+00±-131+15± (RIGHT SIDE)

STA. 68+00±-95+15± (LEFT SIDE)  
STA. 127+00±-131+15± (LEFT SIDE)

STA. 88+00± - END PROJECT LIMITS (MEDIAN)

°PREPARE EXISTING MEDIAN FOR PHASE II TRAFFIC SHIFT STA. 72+50± TO 87+00±. BEGIN INSTALLATION OF TEMPORARY SIGNALS AT STA. 74+00± AND STA. 82+10± AND MAINTAIN COVERED.

°BEGIN MEDIAN GRADING UP TO THE EDGE AND ELEVATION OF EXISTING PAVEMENT FROM STA. 88+00± TO END PROJECT LIMITS.

°CONSTRUCT CULVERT EXTENSION AT STA. 113+50±.

PHASE II: (TMP 14-14B)

STEP 1: COMPLETE US 301 BYP (-L-) RIGHT OUTSIDE WIDENING STA. 69+00± - 82+00± AND MEDIAN STA. 72+00± - 86+70±.

### INTERMEDIATE CONTRACT TIME SPECIAL PROVISION

COMPLETE AREA 3 PHASE II STEPS 2-4 WITHIN A PERIOD OF 14 CONSECUTIVE CALENDAR DAYS.

STEP 2: ACTIVATE TEMPORARY SIGNALS AT STA. 74+00± AND STA. 82+10± AND SHIFT US 301 BYP (-L-) TRAFFIC TO RIGHT SIDE.  
\*COORDINATE TIME AND DATE OF TRAFFIC SHIFT WITH THE ENGINEER.\*

STEP 3: REVISE GRADE STA. 76+00± TO 81+00± (PAVEMENT REMOVAL ~1'/PAVING) AND COMPLETE OUTSIDE WIDENING STA. 74+00± - 82+00±.

STEP 4: SHIFT US 301 BYP SB LANES BACK TO EXISTING.

STEP 5: COMPLETE PROPOSED -L- OUTSIDE WIDENING.

PHASE III: (TMP 15-15D)

COMPLETE -L- OUTSIDE WIDENING STA. 95+00± - 128+00±, -Y3RPB-, AND KEYED-IN ISLAND CONSTRUCTION.

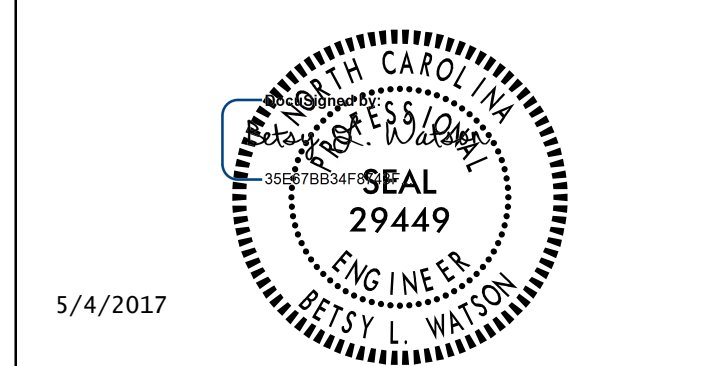
OPEN US 301 BYP TO SUPERSTREET CONFIGURATION.

REMOVE ALL TRAFFIC CONTROL DEVICES AND OPEN AREA 3 TO THE FINAL PATTERN.

PHASING



Stantec Consulting Services Inc.  
801 Jones Franklin Road  
Suite 300  
Raleigh, NC 27606  
Tel. 919.851.6866  
Fax. 919.851.7024  
www.stantec.com  
License No. F-0672



**DOCUMENT NOT CONSIDERED FINAL  
UNLESS ALL SIGNATURES COMPLETED**

