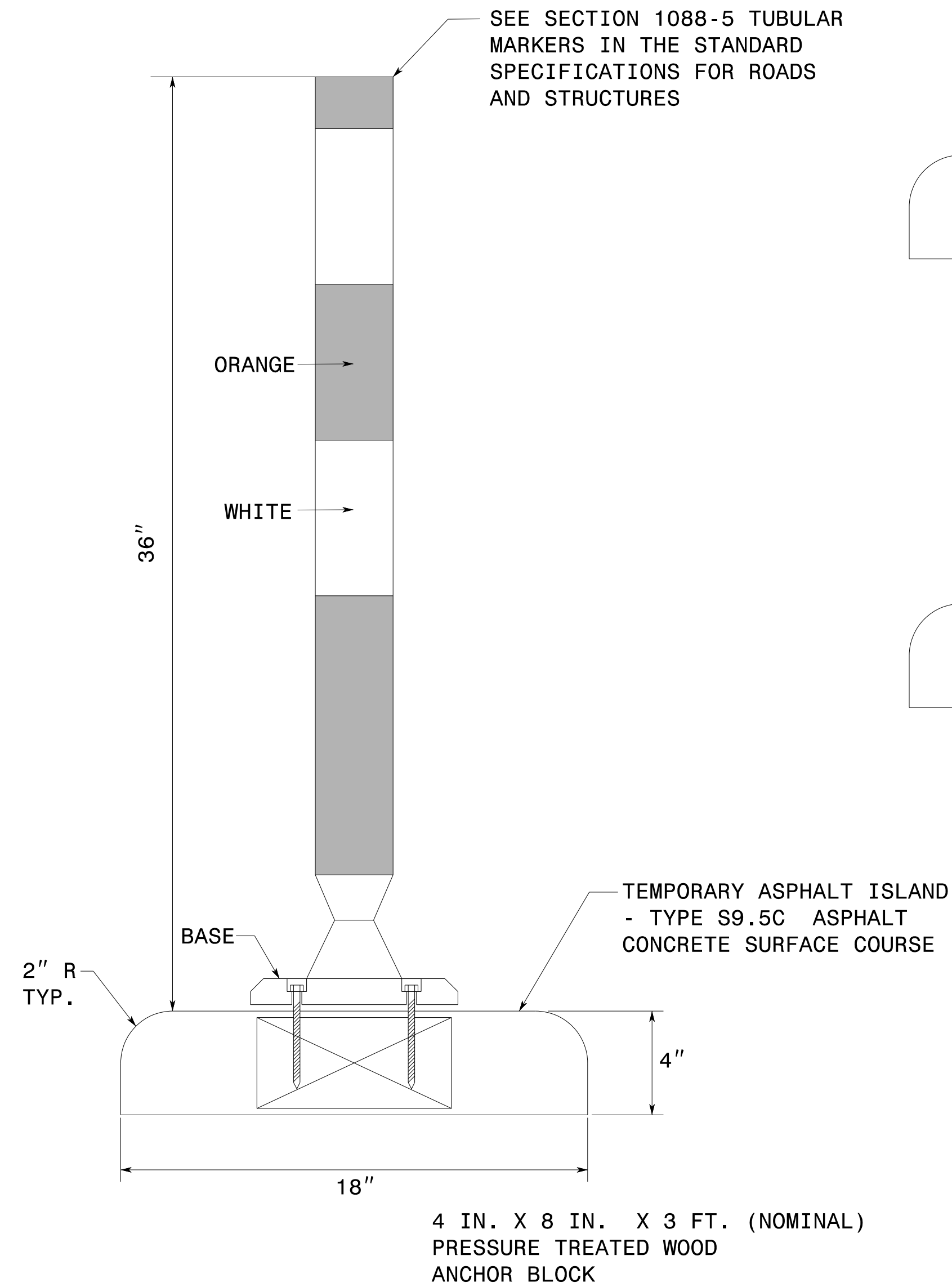
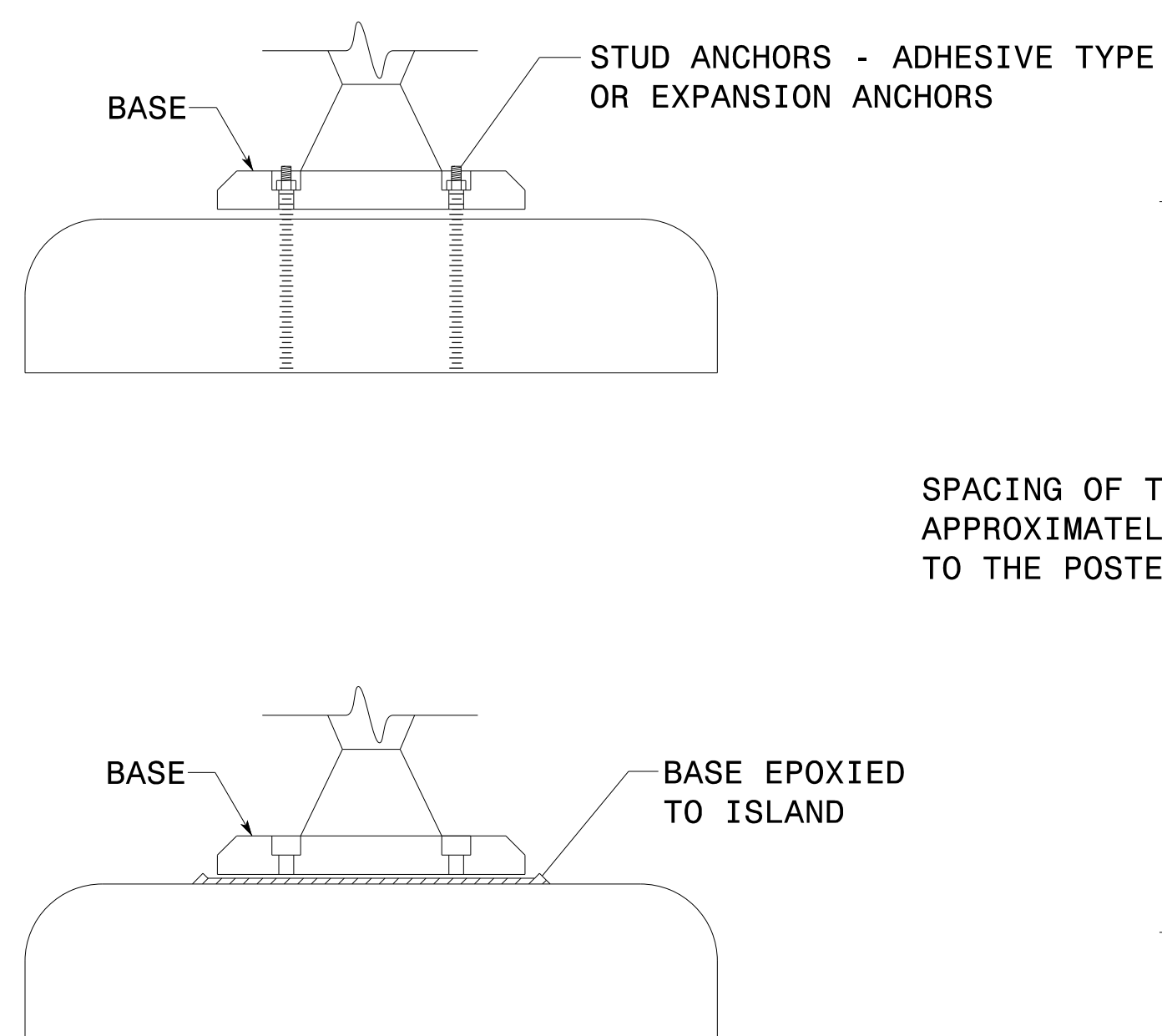


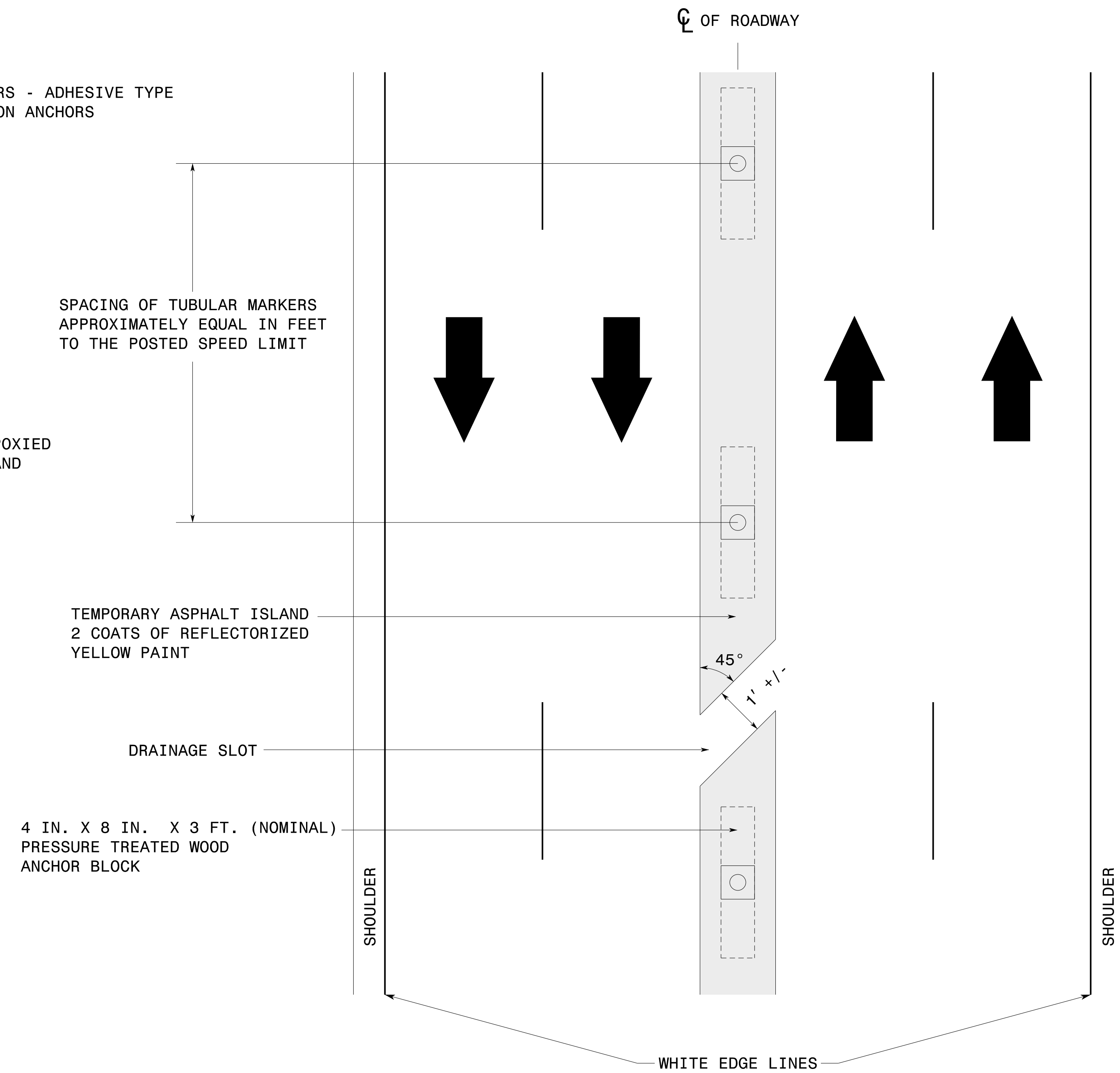
### SECTION VIEW



### ALTERNATE BASE MOUNTING DETAILS



### TOP VIEW



### GENERAL NOTES

- DRAINAGE SLOTS SHALL BE LOCATED IN AREAS OF ROADWAY SUPERELEVATION AS DETERMINED ON SITE. THE SLOTS SHALL BE ANGLED IN THE SAME DIRECTION AS THE WATER FLOW, AT APPROXIMATELY A 45 DEGREE ANGLE.
- ISLAND SHALL BE PAINTED WITH 2 COATS OF REFLECTORIZED YELLOW PAINT. PRECAUTIONS SHALL BE TAKEN TO PREVENT OVERSPRAY ONTO THE ADJACENT PAVEMENT.
- ISLAND MAY BE REMOVED BY SCRAPING FROM ROADWAY SURFACE WITH A FRONT-END LOADER.

2/8/2017  
Us:\Traffic\Transportation Management\Plan\TMP\PLAN SHEETS\U-3330\_TMP\_02D\_TEMPORARY ASPHALT ISLAND\_TYPICAL.dgn  
cowings

|  |  |   |   |
|--|--|---|---|
| <p>Stantec Consulting Services Inc.<br/>801 Jones Franklin Road<br/>Suite 300<br/>Raleigh, NC 27606<br/>Tel. 919.851.6866<br/>Fax. 919.851.7024<br/>www.stantec.com<br/>License No. F-0672</p> | <p>2/15/2017</p> <p><b>DOCUMENT NOT CONSIDERED FINAL<br/>UNLESS ALL SIGNATURES COMPLETED</b></p> | <p>DIVISION OF HIGHWAYS<br/>STATE OF NORTH CAROLINA<br/>DEPARTMENT OF TRANSPORTATION<br/>WORK ZONE TRAFFIC CONTROL UNIT</p> | <p><b>TEMPORARY ASPHALT ISLAND<br/>WITH TUBULAR MARKERS</b></p> |
|--|--|---|---|