

TEMPORARY SHORING LOCATION NO. 03  
 -L- 59+89± (5.0' RT) TO -L- 60+18± (5.0' RT)

ESTIMATED QUANTITY = 98.6 SF

FOR TEMPORARY SHORING AND POSITIVE PROTECTION FOR TEMPORARY SHORING, SEE PLANS AND TEMPORARY SHORING PROVISION.

BEFORE BEGINNING TEMPORARY SHORING DESIGN OR CONSTRUCTION, SURVEY EXISTING GROUND ELEVATIONS IN THE VICINITY OF SHORING LOCATIONS TO DETERMINE ACTUAL SHORING HEIGHTS.

DESIGN TEMPORARY SHORING FROM -L- Sta. 59+89 +/- 5.0 ft. Right to -L- Sta. 60+18 +/- 5.0 ft. Right, FOR THE FOLLOWING ASSUMED SOIL PARAMETERS AND GROUNDWATER ELEVATION:

UNIT WEIGHT ( $\gamma$ ) = 120 LB/CF  
 FRICTION ANGLE ( $\phi$ ) = 30 DEGREES  
 COHESION (c) = 0 LB/SF  
 GROUNDWATER ELEV = 85 FT

DO NOT USE CANTILEVER, BRACED AND/OR ANCHORED SHORING FOR TEMPORARY SHORING FROM -L- Sta. 59+89 +/- 5.0 ft. Right to -L- Sta. 60+18 +/- 5.0 ft. Right.

AT THE CONTRACTOR'S OPTION, USE STANDARD TEMPORARY WALL FOR TEMPORARY SHORING FROM -L- Sta. 59+89 +/- 5.0 ft. Right to -L- Sta. 60+18 +/- 5.0 ft. Right. SEE STANDARD DRAWING NO. 1801.02 FOR STANDARD TEMPORARY WALLS.

WHEN BACKFILL FOR BRIDGE APPROACH FILLS OVERLAPS WITH THE REINFORCED ZONE OF TEMPORARY WALLS, USE SHORING BACKFILL OR BACKFILL MATERIAL REQUIRED FOR BRIDGE APPROACH FILLS, WHICHEVER IS BETTER, IN THE REINFORCED ZONE OF TEMPORARY WALLS.

SEE SHEET TMP-10A.

TEMPORARY SHORING LOCATION NO. 04  
 -L- 61+88±(5.0' RT) TO -L- 62+18± (5.0' RT)

ESTIMATED QUANTITY = 150.0 SF

FOR TEMPORARY SHORING AND POSITIVE PROTECTION FOR TEMPORARY SHORING, SEE PLANS AND TEMPORARY SHORING PROVISION.

BEFORE BEGINNING TEMPORARY SHORING DESIGN OR CONSTRUCTION, SURVEY EXISTING GROUND ELEVATIONS IN THE VICINITY OF SHORING LOCATIONS TO DETERMINE ACTUAL SHORING HEIGHTS.

DESIGN TEMPORARY SHORING FROM -L- Sta. 61+88 +/- 5.0 ft. Right to -L- Sta. 62+18 +/- 5.0 ft. Right, FOR THE FOLLOWING ASSUMED SOIL PARAMETERS AND GROUNDWATER ELEVATION:

UNIT WEIGHT ( $\gamma$ ) = 120 LB/CF  
 FRICTION ANGLE ( $\phi$ ) = 30 DEGREES  
 COHESION (c) = 0 LB/SF  
 GROUNDWATER ELEV = 85 FT

DO NOT USE CANTILEVER, BRACED AND/OR ANCHORED SHORING FOR TEMPORARY SHORING FROM -L- Sta. 61+88 +/- 5.0 ft. Right to -L- Sta. 62+18 +/- 5.0 ft. Right.

AT THE CONTRACTOR'S OPTION, USE STANDARD TEMPORARY WALL FOR TEMPORARY SHORING FROM -L- Sta. 61+88 +/- 5.0 ft. Right to -L- Sta. 62+18 +/- 5.0 ft. Right. SEE STANDARD DRAWING NO. 1801.02 FOR STANDARD TEMPORARY WALLS.

WHEN BACKFILL FOR BRIDGE APPROACH FILLS OVERLAPS WITH THE REINFORCED ZONE OF TEMPORARY WALLS, USE SHORING BACKFILL OR BACKFILL MATERIAL REQUIRED FOR BRIDGE APPROACH FILLS, WHICHEVER IS BETTER, IN THE REINFORCED ZONE OF TEMPORARY WALLS.

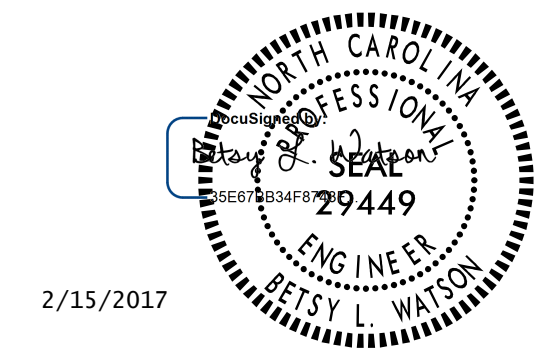
SEE SHEET TMP-10A.

2/8/2017  
 Us\Traffic\Transportation Management\Plan\TMP\PLAN SHEETS\U-3330\_TMP\_02B\_TEMPSSHORINGNOTES.dgn  
 cowings

THE TEMPORARY SHORING NOTES SHOWN ON THIS SHEET WERE PROVIDED THROUGH A SEALED DOCUMENT FROM THE GEOTECHNICAL ENGINEER. THE DOCUMENT WAS SUBMITTED TO THE WZTC SECTION ON OCT. 18, 2016 AND SEALED BY A PROFESSIONAL ENGINEER, JAMES R. BATTS, JR., LICENSE #018899.



Stantec Consulting Services Inc.  
 801 Jones Franklin Road  
 Suite 300  
 Raleigh, NC 27606  
 Tel. 919.851.6866  
 Fax. 919.851.7024  
 www.stantec.com  
 License No. F-0672



**DOCUMENT NOT CONSIDERED FINAL  
 UNLESS ALL SIGNATURES COMPLETED**



TEMPORARY SHORING  
 NOTES