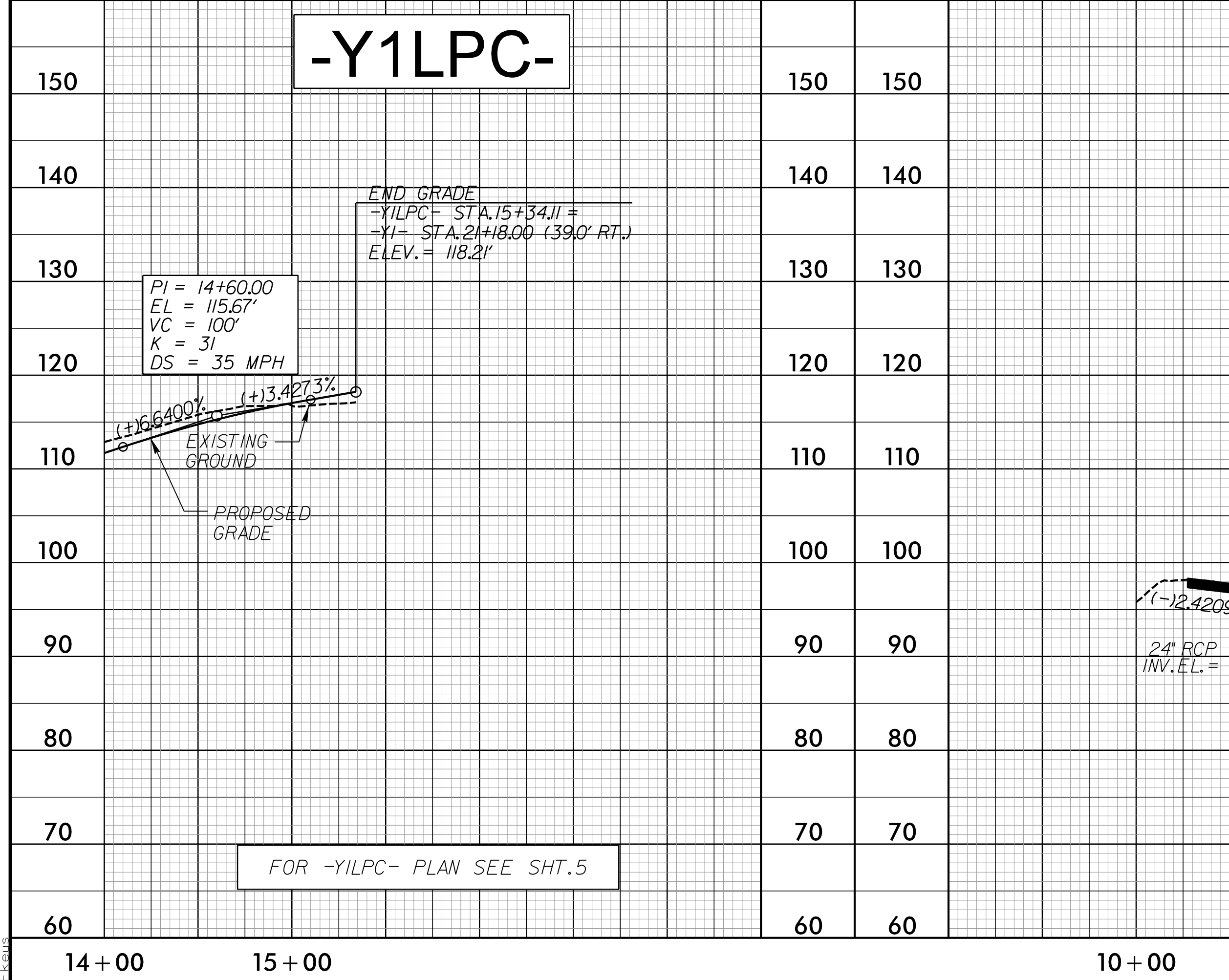
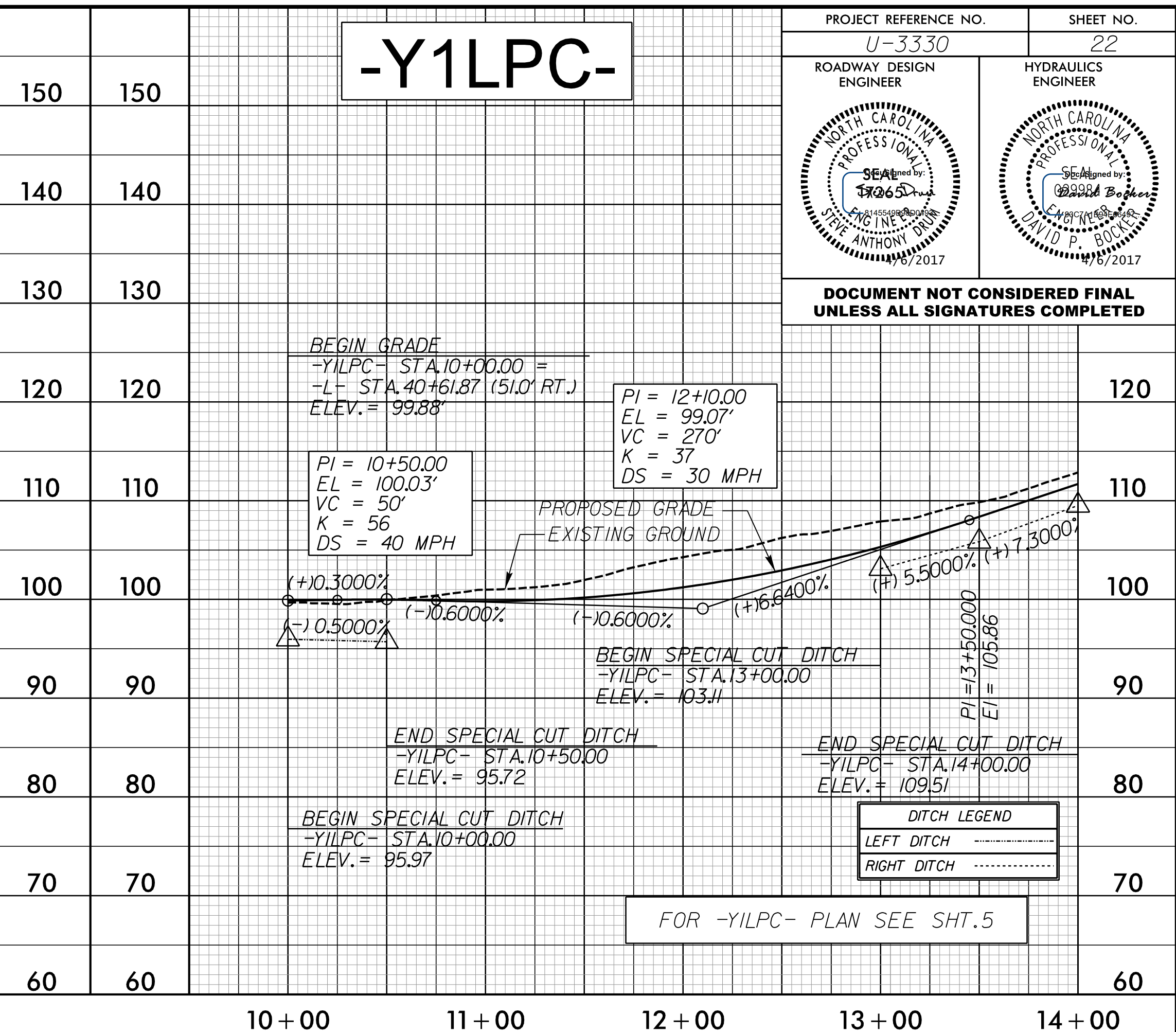
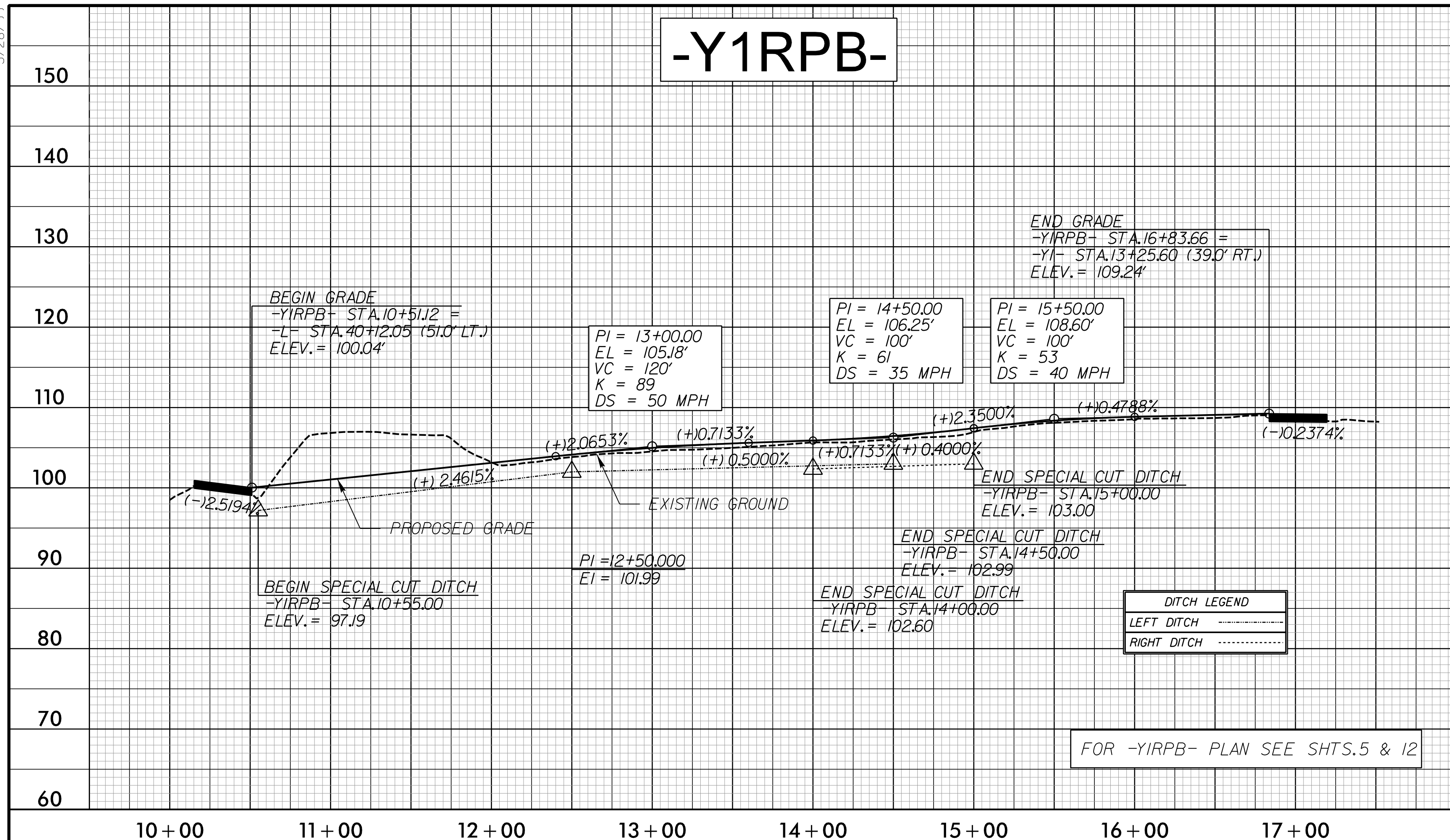


5/28/19

| | |
|---------------------------------|---------------------|
| PROJECT REFERENCE NO. U-3330 | SHEET NO. 22 |
| ROADWAY DESIGN ENGINEER | HYDRAULICS ENGINEER |
| | |

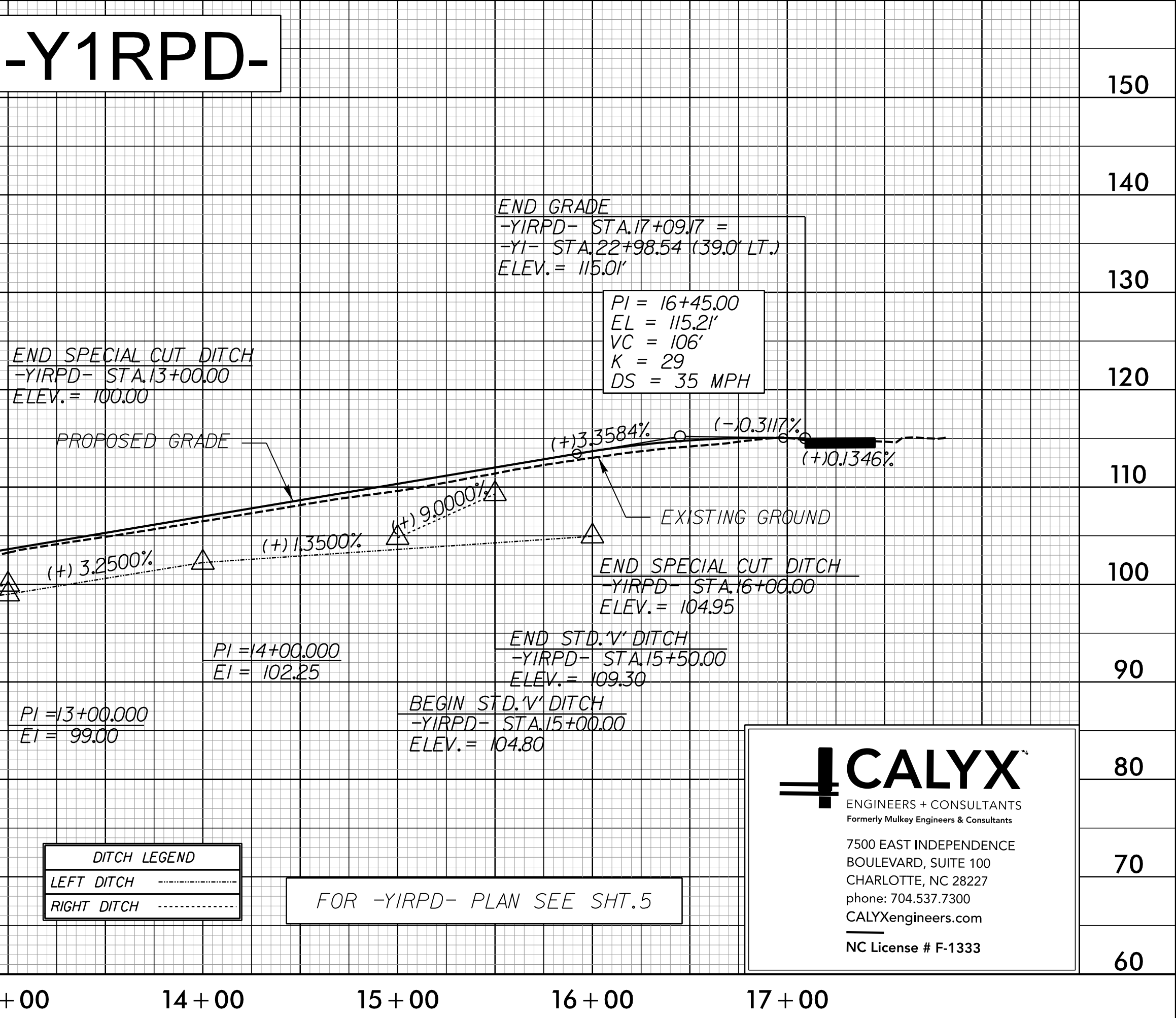
DOCUMENT NOT CONSIDERED FINAL UNLESS ALL SIGNATURES COMPLETED



PIPE HYDRAULIC DATA

-Y1RPD- Sta.10+95 (24" CL.V RCP)

| | | |
|-----------------------|---|----------|
| DRAINAGE AREA | = | 2.9 AC |
| DESIGN FREQUENCY | = | 50 YRS |
| DESIGN DISCHARGE | = | 10.3 CFS |
| DESIGN HW ELEVATION | = | 95.68 FT |
| 100 YEAR DISCHARGE | = | 10.9 CFS |
| 100 YEAR HW ELEVATION | = | 95.72 FT |
| OVERTOPPING FREQUENCY | = | 500 YRS |
| OVERTOPPING DISCHARGE | = | 22 CFS |
| OVERTOPPING ELEVATION | = | 97.29 FT |



CALYX
ENGINEERS + CONSULTANTS
Formerly Mulkey Engineers & Consultants

7500 EAST INDEPENDENCE
BOULEVARD, SUITE 100
CHARLOTTE, NC 28227
phone: 704.537.7300
CALYXengineers.com
NC License # F-1333

A:\5\2017\Roadway\Proj\U3330_R0Y_PSH_022.dgn