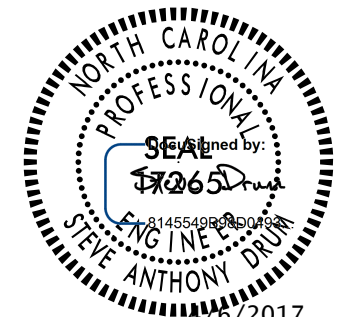

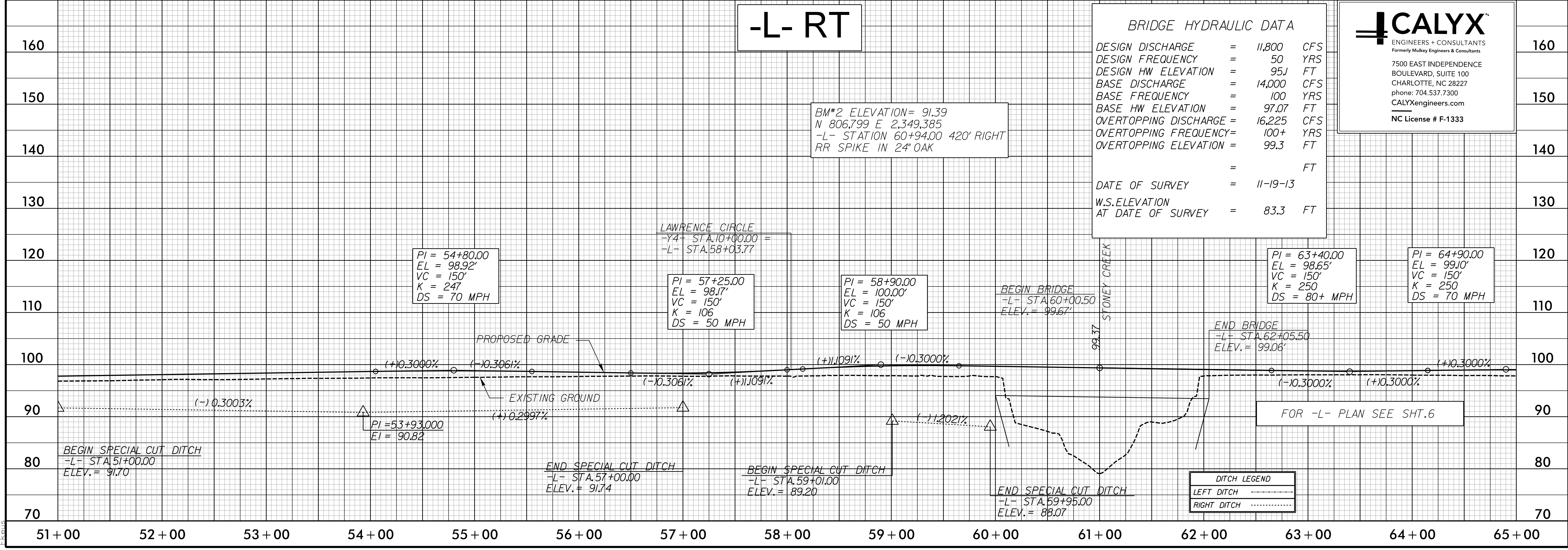
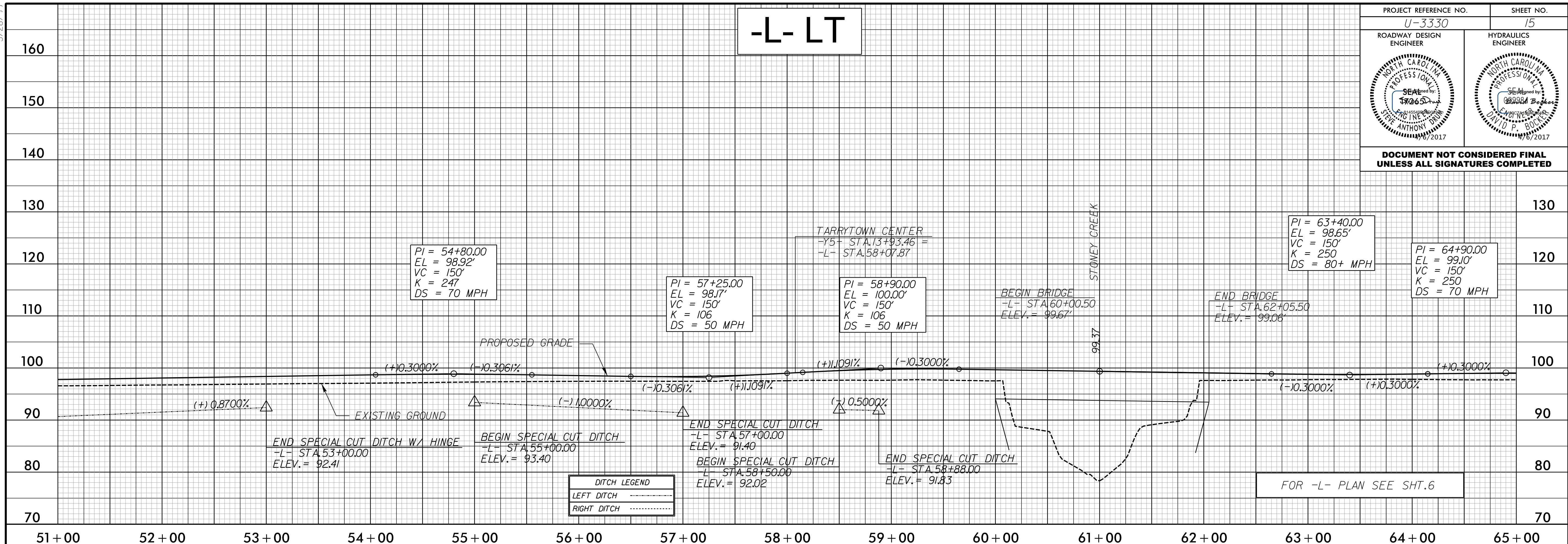


5/28/2017

PROJECT REFERENCE NO. <b>U-3330</b>	SHEET NO. <b>15</b>
ROADWAY DESIGN ENGINEER 	HYDRAULICS ENGINEER 

**DOCUMENT NOT CONSIDERED FINAL UNLESS ALL SIGNATURES COMPLETED**



BRIDGE HYDRAULIC DATA	
DESIGN DISCHARGE	= 11,800 CFS
DESIGN FREQUENCY	= 50 YRS
DESIGN HW ELEVATION	= 95.1 FT
BASE DISCHARGE	= 14,000 CFS
BASE FREQUENCY	= 100 YRS
BASE HW ELEVATION	= 97.07 FT
OVERTOPPING DISCHARGE	= 16,225 CFS
OVERTOPPING FREQUENCY	= 100+ YRS
OVERTOPPING ELEVATION	= 99.3 FT
	= FT
DATE OF SURVEY	= 11-19-13
W.S. ELEVATION AT DATE OF SURVEY	= 83.3 FT

**CALYX**  
ENGINEERS + CONSULTANTS  
Formerly Mulkey Engineers & Consultants  
7500 EAST INDEPENDENCE BOULEVARD, SUITE 100  
CHARLOTTE, NC 28227  
phone: 704.537.7300  
CALYXengineers.com  
NC License # F-1333

BM#2 ELEVATION = 91.39  
N 806,799 E 2,349,385  
-L- STATION 60+94.00 420' RIGHT  
RR SPIKE IN 24' OAK

A:\5\2017\Roadway\Proj\U3330\RDY\_PSH\_015.dgn