

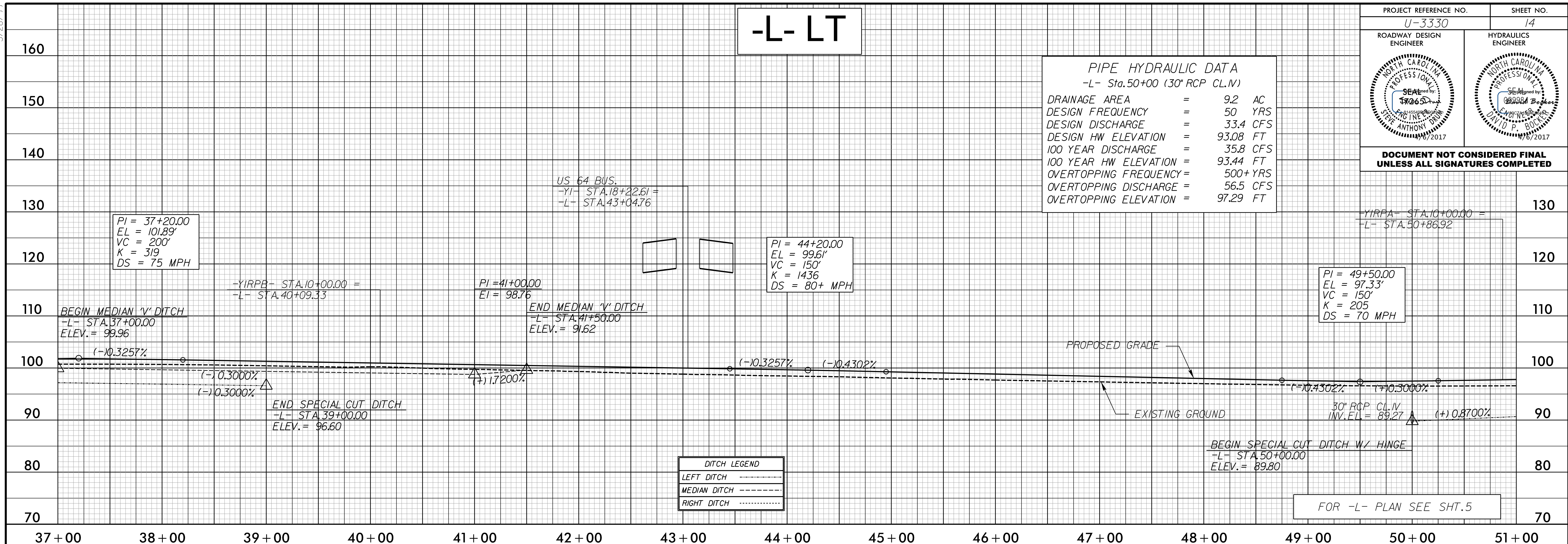
5/28/2017

PROJECT REFERENCE NO. U-3330	SHEET NO. 14
ROADWAY DESIGN ENGINEER 	HYDRAULICS ENGINEER

PIPE HYDRAULIC DATA
-L- Sta.50+00 (30" RCP CL.V)

DRAINAGE AREA	=	9.2 AC
DESIGN FREQUENCY	=	50 YRS
DESIGN DISCHARGE	=	33.4 CFS
DESIGN HW ELEVATION	=	93.08 FT
100 YEAR DISCHARGE	=	35.8 CFS
100 YEAR HW ELEVATION	=	93.44 FT
OVERTOPPING FREQUENCY	=	500+ YRS
OVERTOPPING DISCHARGE	=	56.5 CFS
OVERTOPPING ELEVATION	=	97.29 FT

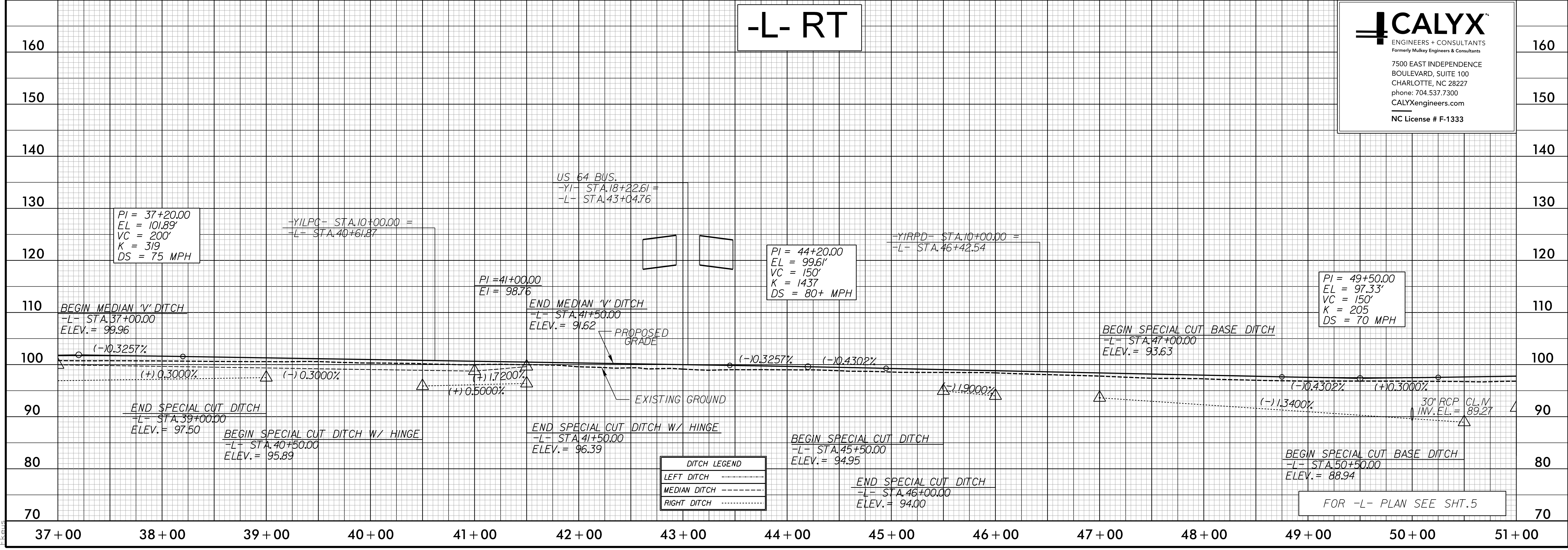
DOCUMENT NOT CONSIDERED FINAL UNLESS ALL SIGNATURES COMPLETED



CALYX
ENGINEERS + CONSULTANTS
Formerly Mulkey Engineers & Consultants

7500 EAST INDEPENDENCE BOULEVARD, SUITE 100
CHARLOTTE, NC 28227
phone: 704.537.7300
CALYXengineers.com

NC License # F-1333



4/5/2017
C:\Users\p\OneDrive\Projs\U3330\RDY_PSH_014.dgn