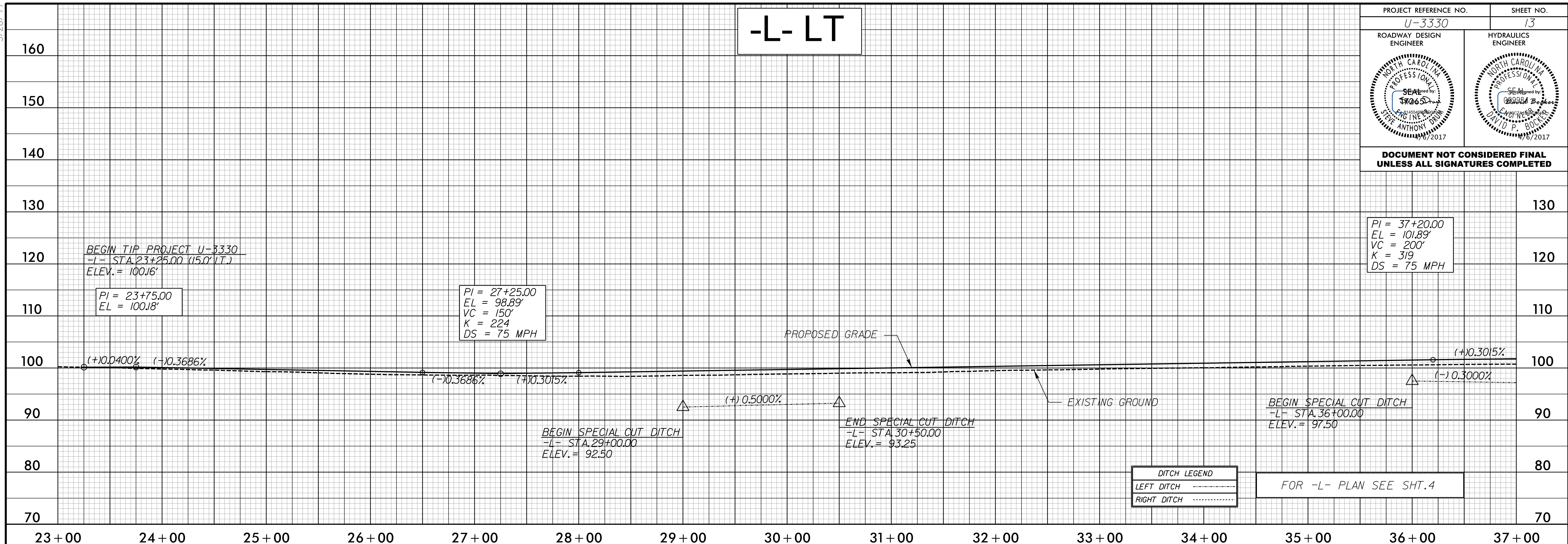


5/28/19

PROJECT REFERENCE NO. U-3330	SHEET NO. 13
ROADWAY DESIGN ENGINEER	HYDRAULICS ENGINEER

DOCUMENT NOT CONSIDERED FINAL UNLESS ALL SIGNATURES COMPLETED

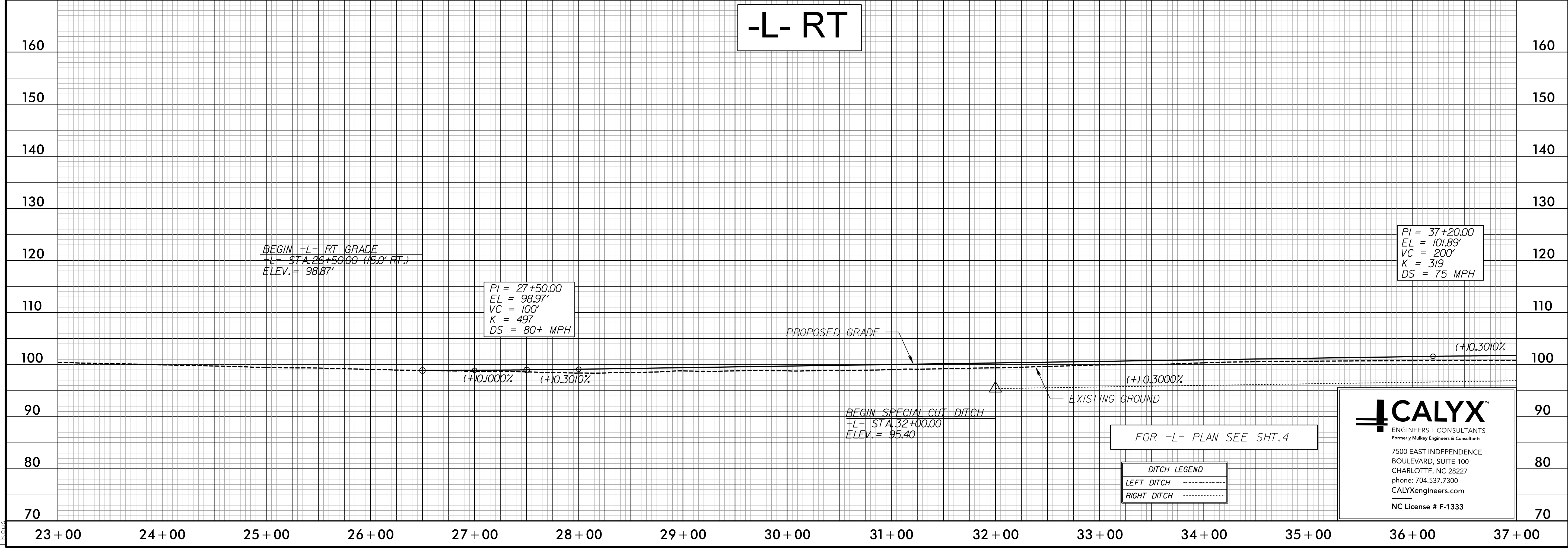
PI = 37+20.00
 EL = 101.89'
 VC = 200'
 K = 319
 DS = 75 MPH



DITCH LEGEND	
LEFT DITCH	-----
RIGHT DITCH	-----

FOR -L- PLAN SEE SHT. 4

-L- RT



FOR -L- PLAN SEE SHT. 4

DITCH LEGEND	
LEFT DITCH	-----
RIGHT DITCH	-----

CALYX
 ENGINEERS + CONSULTANTS
 Formerly Mulkey Engineers & Consultants
 7500 EAST INDEPENDENCE
 BOULEVARD, SUITE 100
 CHARLOTTE, NC 28227
 phone: 704.537.7300
 CALYXengineers.com
 NC License # F-1333

4/5/2017
 C:\Users\p\OneDrive\Projects\U3330\RDY_PSH_013.dgn