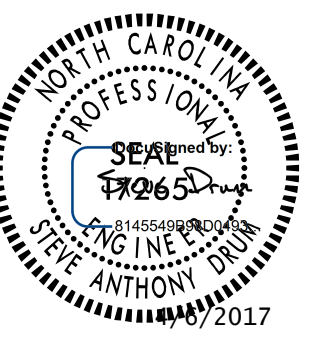
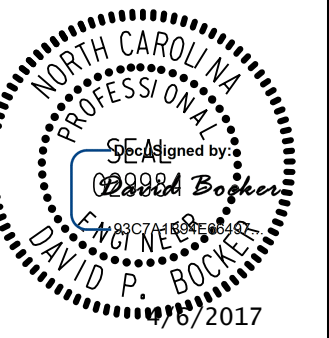
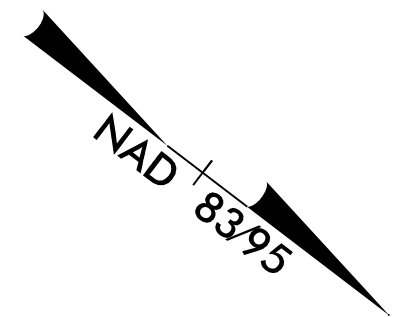
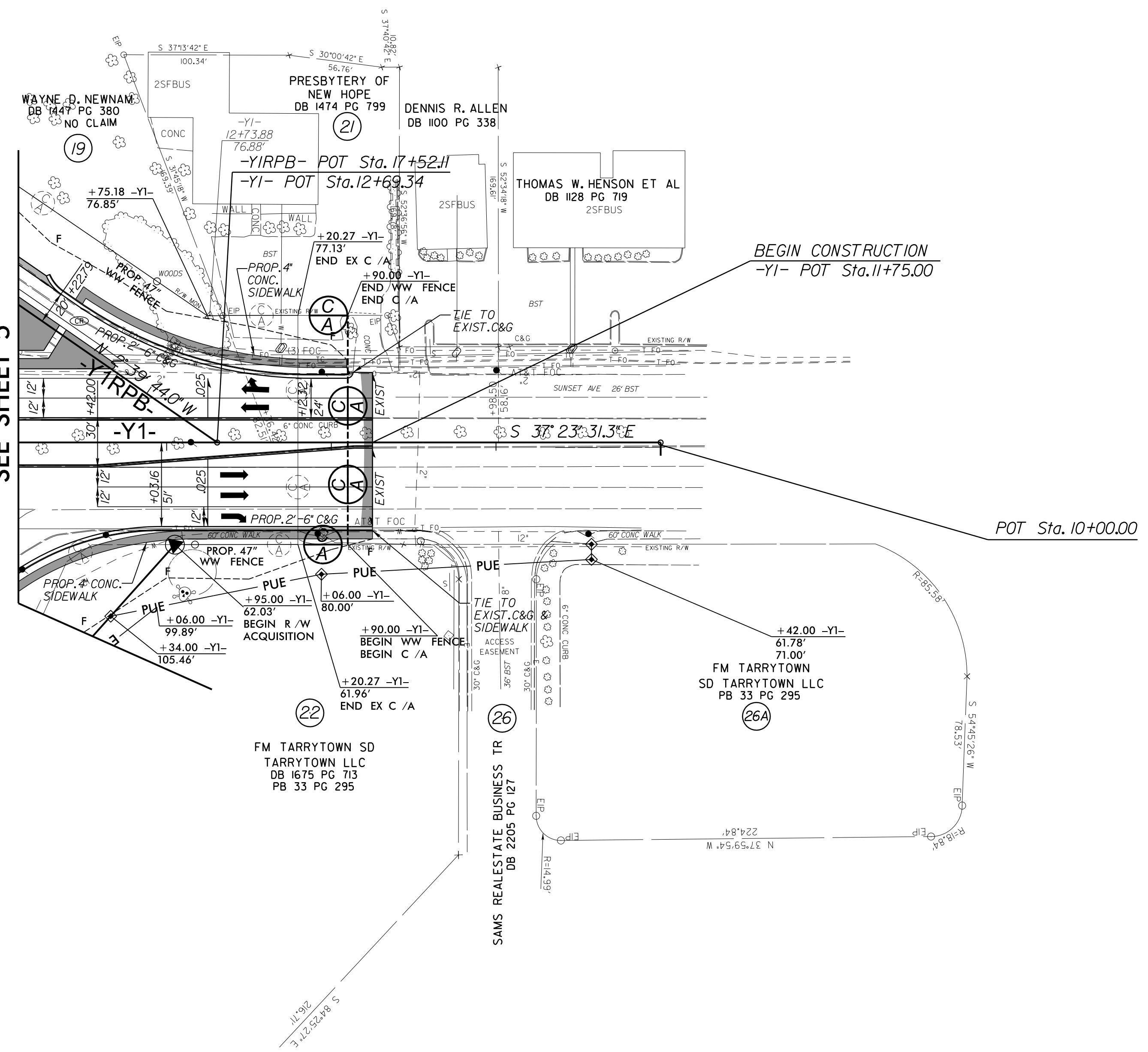


8/17/99

PROJECT REFERENCE NO. U-3330		SHEET NO. 12	
RW SHEET NO.		HYDRAULICS SHEET NO.	
ROADWAY DESIGN ENGINEER		HYDRAULICS ENGINEER	
			
<b>DOCUMENT NOT CONSIDERED FINAL UNLESS ALL SIGNATURES COMPLETED</b>			



MATCHLINE -Y1- STA. 13+90  
SEE SHEET 5



BEGIN CONSTRUCTION  
-Y1- POT Sta. 11+75.00

POT Sta. 10+00.00

4/5/2017  
R:\CAD\Drawings\Proj\U33330\RDY\_PSH\_012.dgn  
E:\Users\j... \

FOR -Y1- PROFILE SEE SHT. 21  
FOR -YIRPB- PROFILE SEE SHT. 22  
SEE SHT. 2D-1 FOR DITCH DETAILS

**CALYX**  
ENGINEERS + CONSULTANTS  
Formerly Mulkey Engineers & Consultants

7500 EAST INDEPENDENCE  
BOULEVARD, SUITE 100  
CHARLOTTE, NC 28227  
phone: 704.537.7300  
CALYXengineers.com  
NC License # F-1333