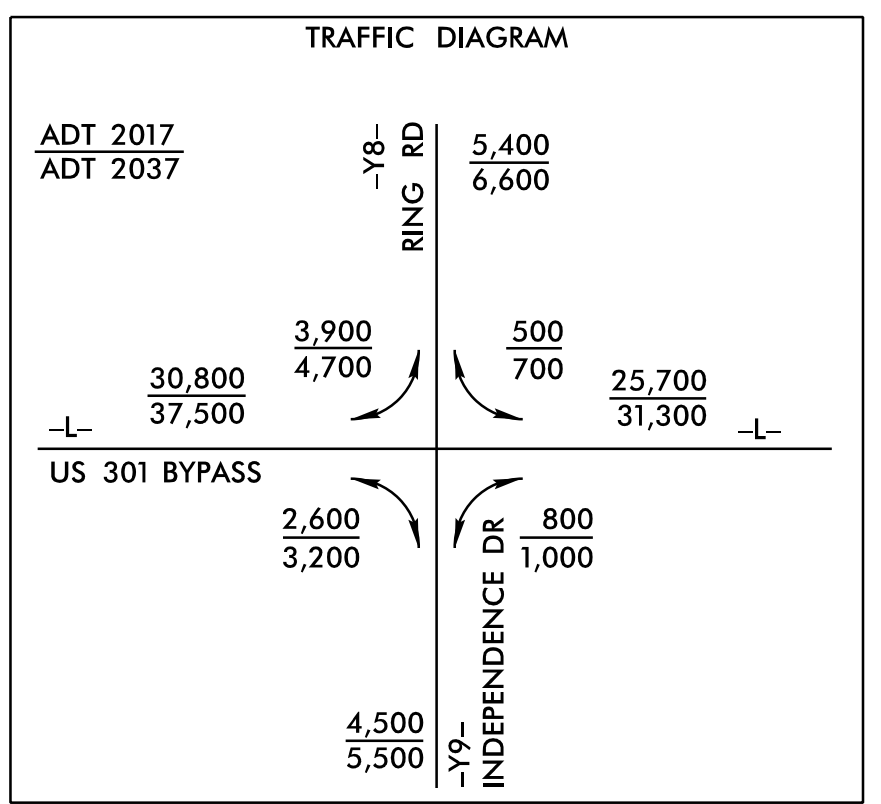
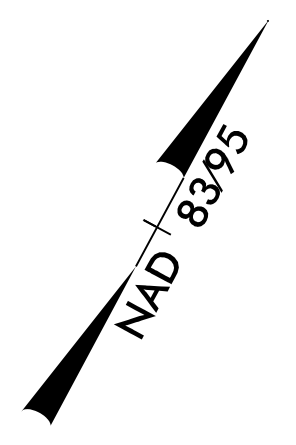


8.17.17.99

|  |  |                        |  |
|--|--|------------------------|--|
| PROJECT REFERENCE NO.<br><b>U-3330</b>                                   |  | SHEET NO.<br><b>10</b> |  |
| RW SHEET NO.   |  |                        |  |
| ROADWAY DESIGN ENGINEER  |  | HYDRAULICS ENGINEER    |  |
|  |  |                        |  |
| <b>DOCUMENT NOT CONSIDERED FINAL<br/>UNLESS ALL SIGNATURES COMPLETED</b> |  |                        |  |

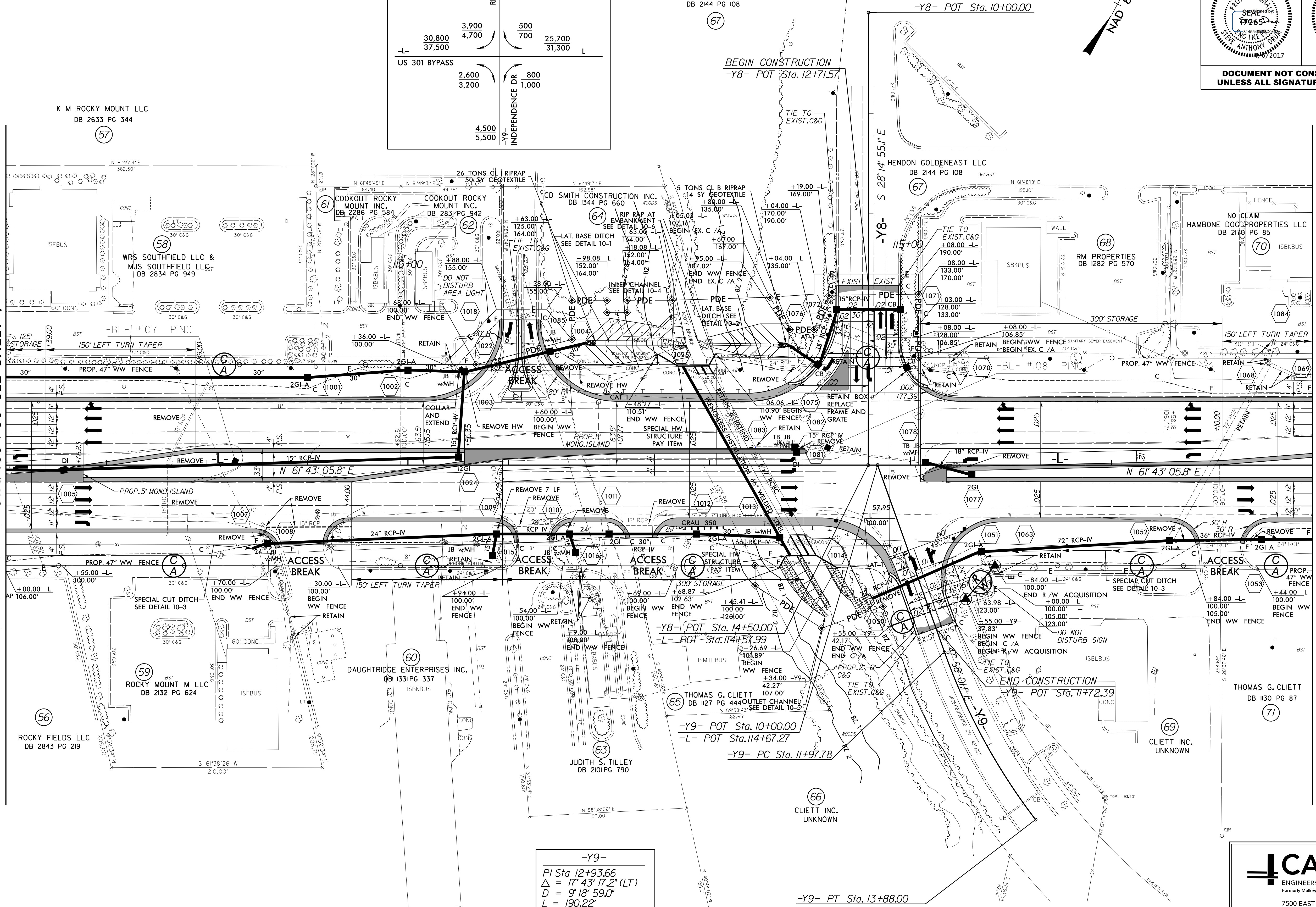


HENDON GOLDENEAST LLC  
DB 2144 PG 108



MATCHLINE -L- STA. 106+00 SEE SHEET 9

MATCHLINE -L- STA. 119+00 SEE SHEET 11



-Y9-  
 PI Sta 12+93.66  
 $\Delta = 17' 43" 17.2" (LT)$   
 $D = 9' 18" 59.0"$   
 $L = 190.22'$   
 $T = 95.87'$   
 $R = 615.00'$   
 SUPER = EXIST.

FOR CULVERT SEE SHEETS C-I THROUGH C-II  
 DRIVEWAY RADII ARE 25' UNLESS OTHERWISE NOTED

FOR -L- PROFILE SEE SHT. 18 & 19  
 FOR -Y8- & -Y9- PROFILE SEE SHT. 25  
 SEE SHT. 2D-1 FOR DITCH DETAILS  
 SEE SHT. 2B-4 FOR INTERSECTION DETAILS

**CALYX**  
 ENGINEERS + CONSULTANTS  
 Formerly Mulkey Engineers & Consultants  
 7500 EAST INDEPENDENCE  
 BOULEVARD, SUITE 100  
 CHARLOTTE, NC 28227  
 phone: 704.537.7300  
 CALYXengineers.com  
 NC License # F-1333

4/5/2017  
R:\Cadd\proj\U3330\RDY\_PSH\_010.dgn