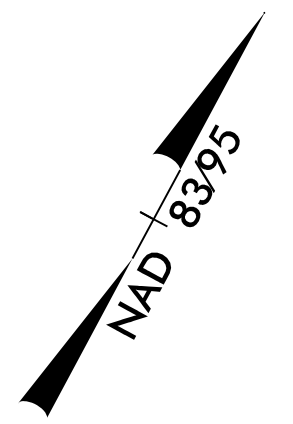
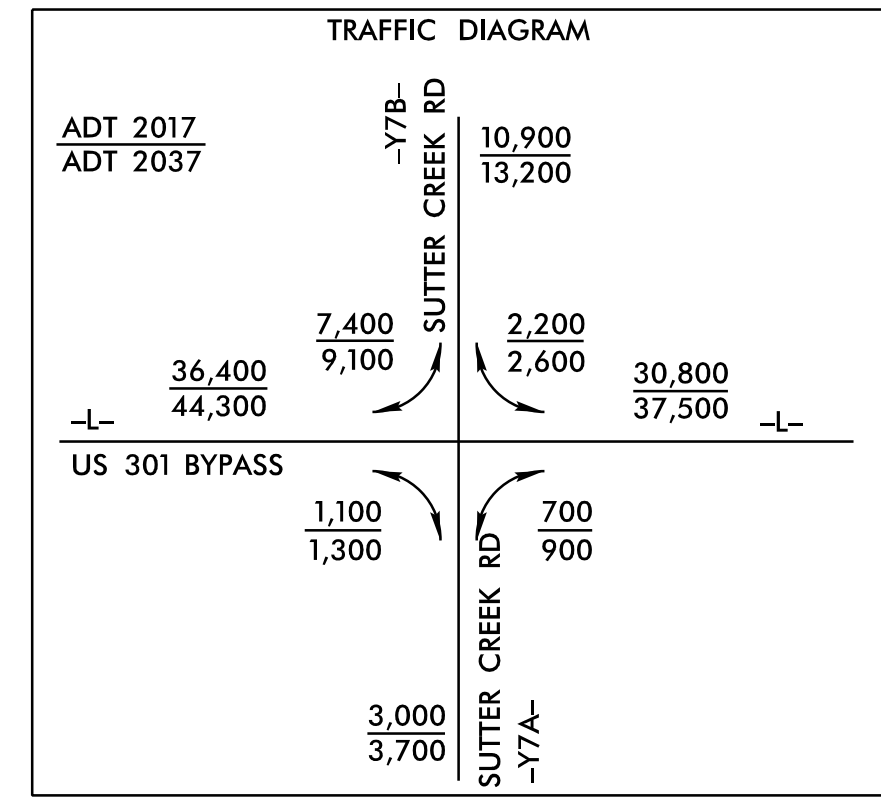
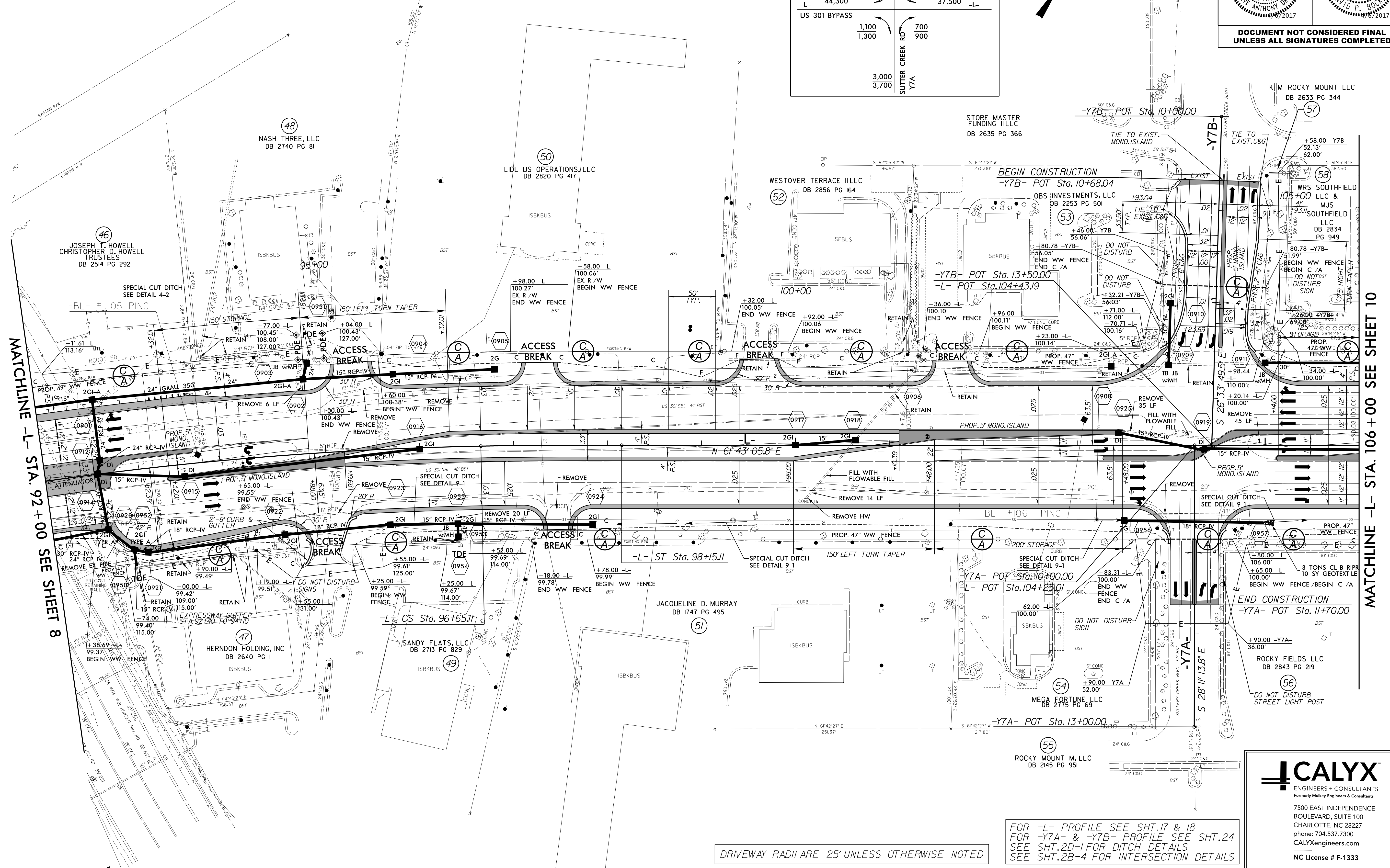


8.17.17.99

| | | |
|---|--|---|
| -L- | | |
| Pls Sta 77+22.10 Os = 1'07" 29.7" Ls = 150.00' LT = 100.00' ST = 50.00' | Pls Sta 87+38.46 Δ = 28' 23" 35.4" (RT) D = 1'29" 59.6" L = 1,893.02' T = 966.37' R = 3,820.00' SUPER = 0.03 RO = 150.00' | Pls Sta 97+15.11 Os = 1'07" 29.7" Ls = 150.00' LT = 100.00' ST = 50.00' |



| | |
|--|---------------------|
| PROJECT REFERENCE NO. U-3330 | SHEET NO. 9 |
| ROADWAY DESIGN ENGINEER | HYDRAULICS ENGINEER |
| | |
| DOCUMENT NOT CONSIDERED FINAL UNLESS ALL SIGNATURES COMPLETED | |



DRIVEWAY RADII ARE 25' UNLESS OTHERWISE NOTED

FOR -L- PROFILE SEE SHT. 17 & 18
 FOR -Y7A- & -Y7B- PROFILE SEE SHT. 24
 SEE SHT. 2D-1 FOR DITCH DETAILS
 SEE SHT. 2B-4 FOR INTERSECTION DETAILS

CALYX
 ENGINEERS + CONSULTANTS
 Formerly Mulkey Engineers & Consultants
 7500 EAST INDEPENDENCE
 BOULEVARD, SUITE 100
 CHARLOTTE, NC 28227
 phone: 704.537.7300
 CALYXengineers.com
 NC License # F-1333

4/5/2017
C:\cadd\proj\proj\U3330\RDY_PSH_09.dgn
E:\cadd\proj\proj\U3330\RDY_PSH_09.dgn