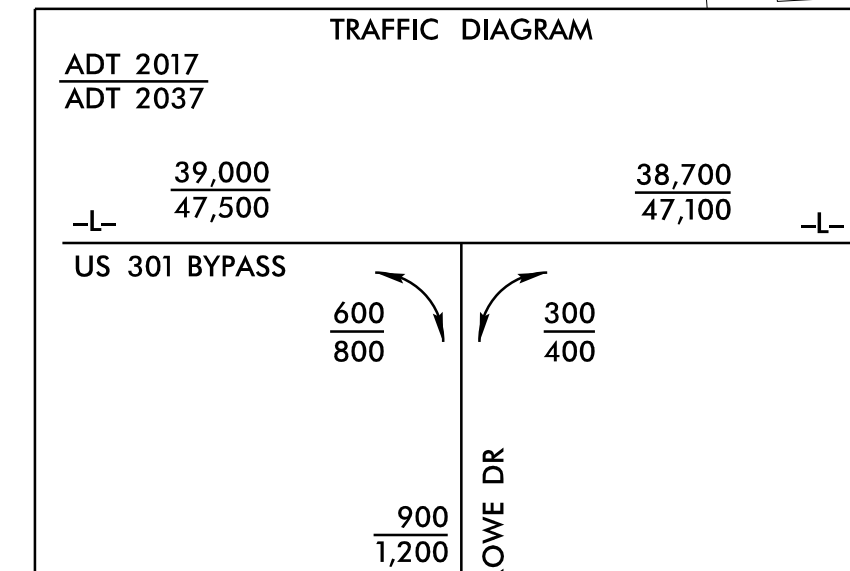
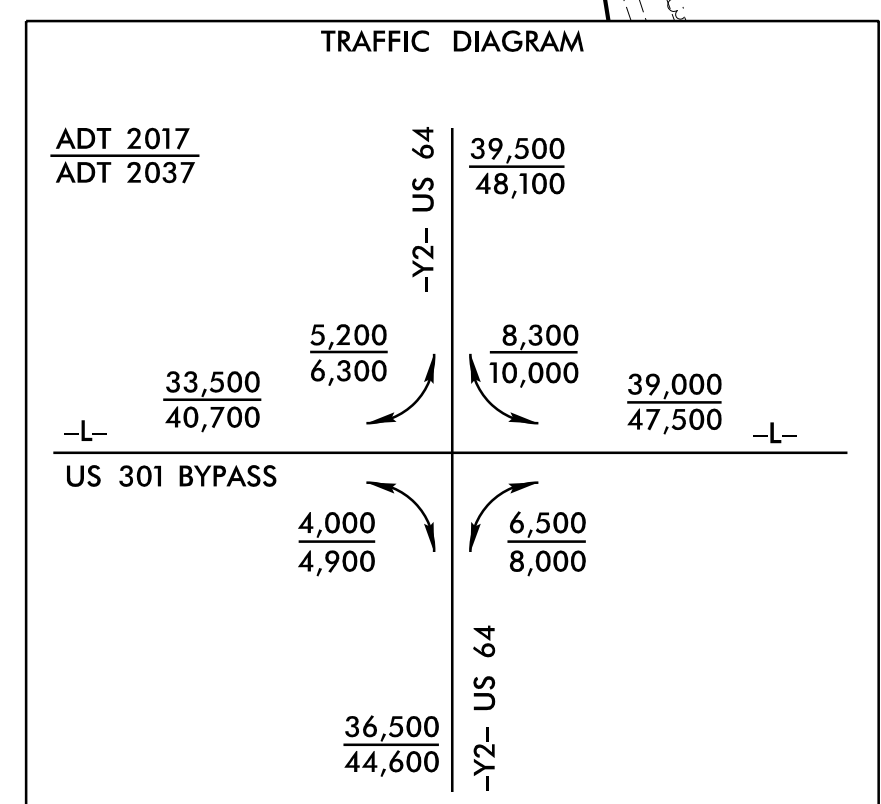
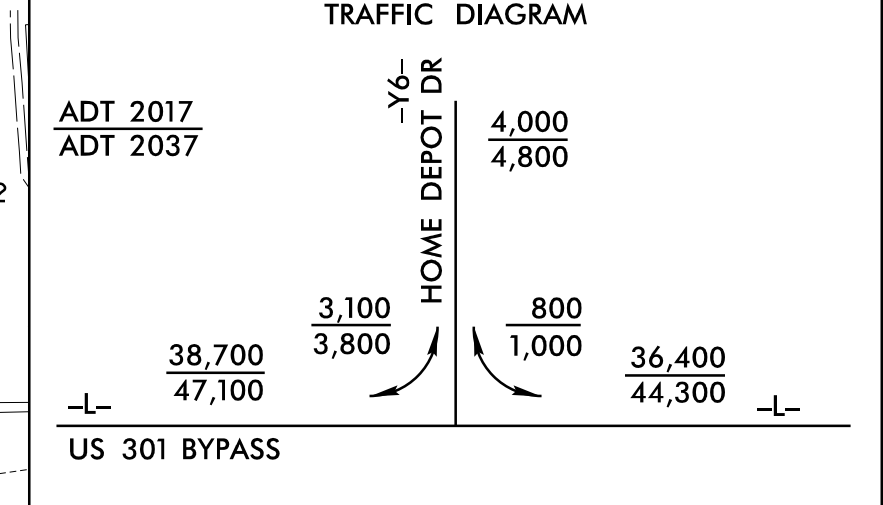
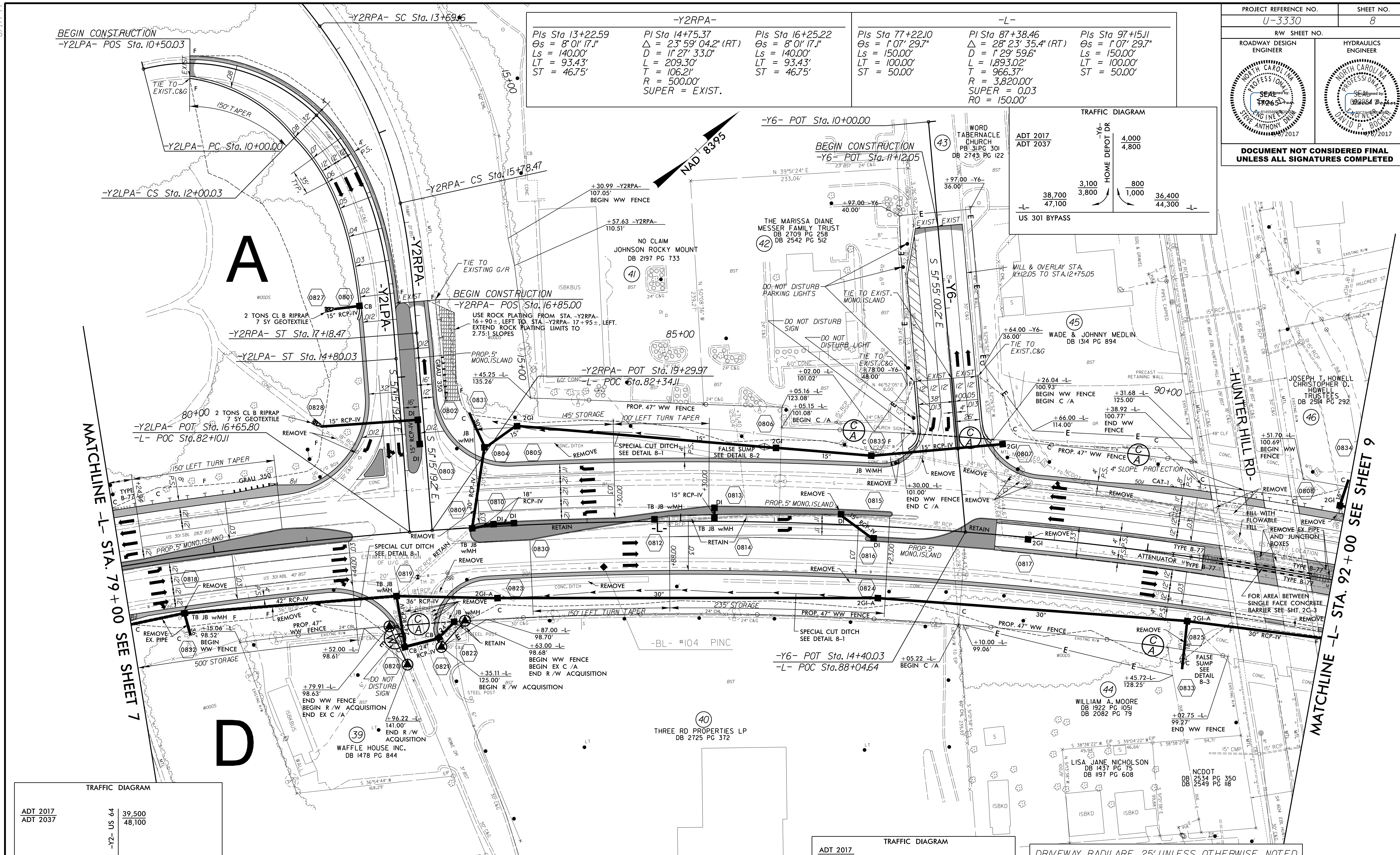


PROJECT REFERENCE NO. U-3330	SHEET NO. 8
ROADWAY DESIGN ENGINEER	HYDRAULICS ENGINEER
DOCUMENT NOT CONSIDERED FINAL UNLESS ALL SIGNATURES COMPLETED	

<p>-Y2RPA-</p> <p>Pls Sta 13+22.59 $\Delta = 8^{\circ} 0' 17.1''$ $L_s = 140.00'$ $LT = 93.43'$ $ST = 46.75'$</p>	<p>-Y2RPA-</p> <p>Pls Sta 14+75.37 $\Delta = 23^{\circ} 59' 04.2''$ (RT) $D = 11^{\circ} 27' 33.0''$ $L = 209.30'$ $T = 106.21'$ $R = 500.00'$ SUPER = EXIST.</p>	<p>-Y2RPA-</p> <p>Pls Sta 16+25.22 $\Delta = 8^{\circ} 0' 17.1''$ $L_s = 140.00'$ $LT = 93.43'$ $ST = 46.75'$</p>	<p>-L-</p> <p>Pls Sta 77+22.00 $\Delta = 1^{\circ} 07' 29.7''$ $L_s = 150.00'$ $LT = 100.00'$ $ST = 50.00'$</p>	<p>-L-</p> <p>Pls Sta 87+38.46 $\Delta = 28^{\circ} 23' 35.4''$ (RT) $D = 1^{\circ} 29' 59.6''$ $L = 1,893.02'$ $T = 966.37'$ $R = 3,820.00'$ SUPER = 0.03 $RO = 150.00'$</p>	<p>-L-</p> <p>Pls Sta 97+15.11 $\Delta = 1^{\circ} 07' 29.7''$ $L_s = 150.00'$ $LT = 100.00'$ $ST = 50.00'$</p>
--	---	--	--	---	--



-Y2LPA-

Pls Sta 11+09.82 $\Delta = 58^{\circ} 46' 25.4''$ (RT) $D = 29^{\circ} 22' 56.8''$ $L = 200.03'$ $T = 109.82'$ $R = 195.00'$ SUPER = 0.08	Pls Sta 12+98.20 $\Delta = 41^{\circ} 08' 07.6''$ $L_s = 280.00'$ $LT = 191.97'$ $ST = 98.17'$
---	--

FOR -L- PROFILE SEE SHT.17
 FOR -Y2LPA- & -Y2RPA- PROFILE SEE SHT.23
 FOR -Y6- PROFILE SEE SHT.24
 SEE SHT.2D-1 FOR DITCH DETAILS
 SEE SHT.2B-3 FOR INTERSECTION DETAILS

CALYX
 ENGINEERS + CONSULTANTS
 Formerly Mulvey Engineers & Consultants

7500 EAST INDEPENDENCE
 BOULEVARD, SUITE 100
 CHARLOTTE, NC 28227
 phone: 704.537.7300
 CALYXengineers.com
 NC License # F-1333

4/5/2017
 R:\Projects\U3330\RDY_PSH_08.dgn
 E:\Users\j...
 8.17/7.99